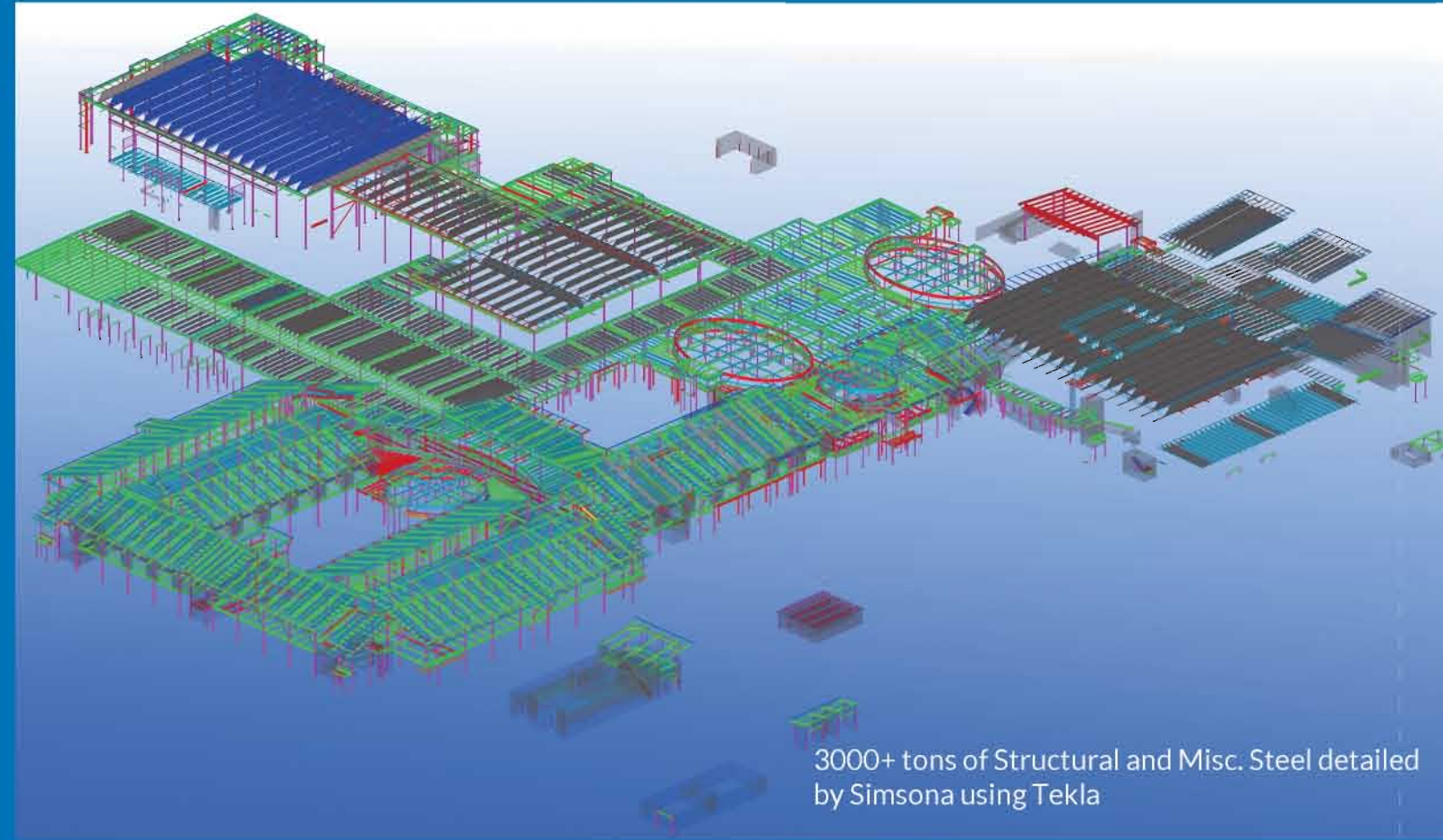
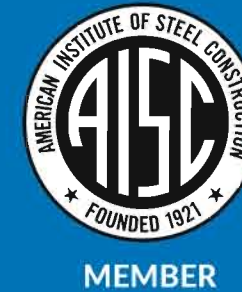


Software



3000+ tons of Structural and Misc. Steel detailed by Simsona using Tekla



MEMBER

High Quality, Quick Turnaround

Send us an email or give us a call whenever you need a quote

Steel Detailing

450+ Detailers, Engineers, and Estimators

Contact Us: Raj Gupta, Simsona Corp. 2275 Research Blvd. Suite 500 Rockville, MD 20850

Ph: 301-774-0880 Fax: 301-260-0239 Email: raj@simsona.com

WWW.SIMSONA.COM



Global Leader in Steel Detailing

450+ Detailers, Engineers, and Estimators

Simsona Corp. has become a global leader in the steel detailing industry and engineering services.

We started providing detailing services in 1997. Since then, the company has grown from being a small operation to an organization with 450+ employees skilled in Steel Detailing, Rebar Detailing, Estimation Services and Engineering Services. The secret of our success is the winning combination of experienced project managers, well-trained detailers, engineers and the latest software.

We are committed to our clients' success, working diligently to provide quality in every project that we are part of. We strive to be a valuable resource to the steel detailing and construction industry, providing our services at competitive prices. We follow Standards and guidelines set by AISC, NISD, OSHA.

Services Offered

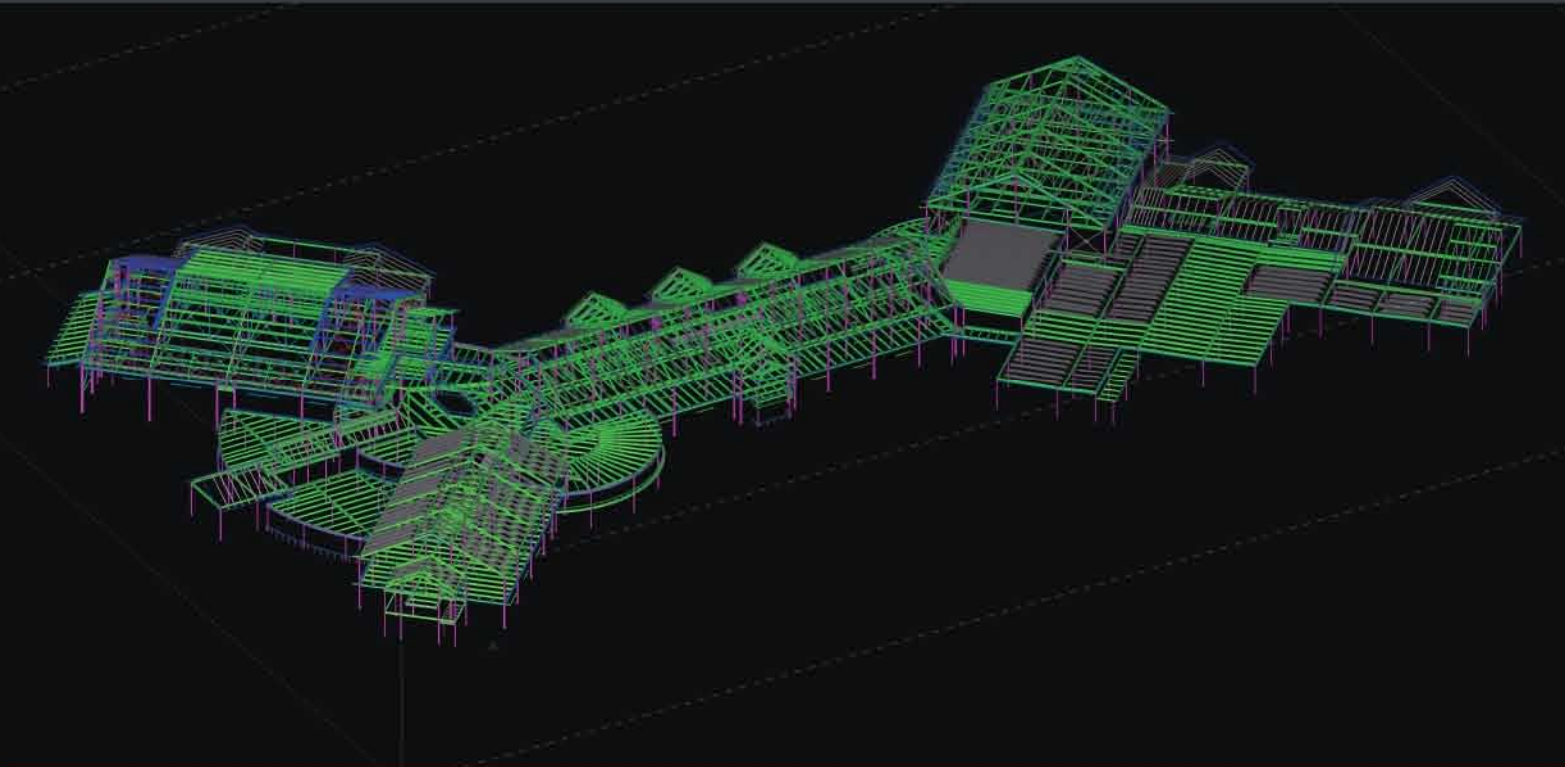
- Structural Steel Detailing
- Misc. Metal Detailing
- Stair and Railing Detailing
- Connection Design and Calculations
- Stairs, Railing design and Calculations
- Engineering Services
- Estimating Services
- Rebar Detailing
- 3D Modeling, BIM (Building Information Modeling)
- Provide assistance to the companies to execute the project in-house

Takeoff for Estimating and Bidding

- Steel and Rebar take-off
- Takeoff for all construction trades / divisions

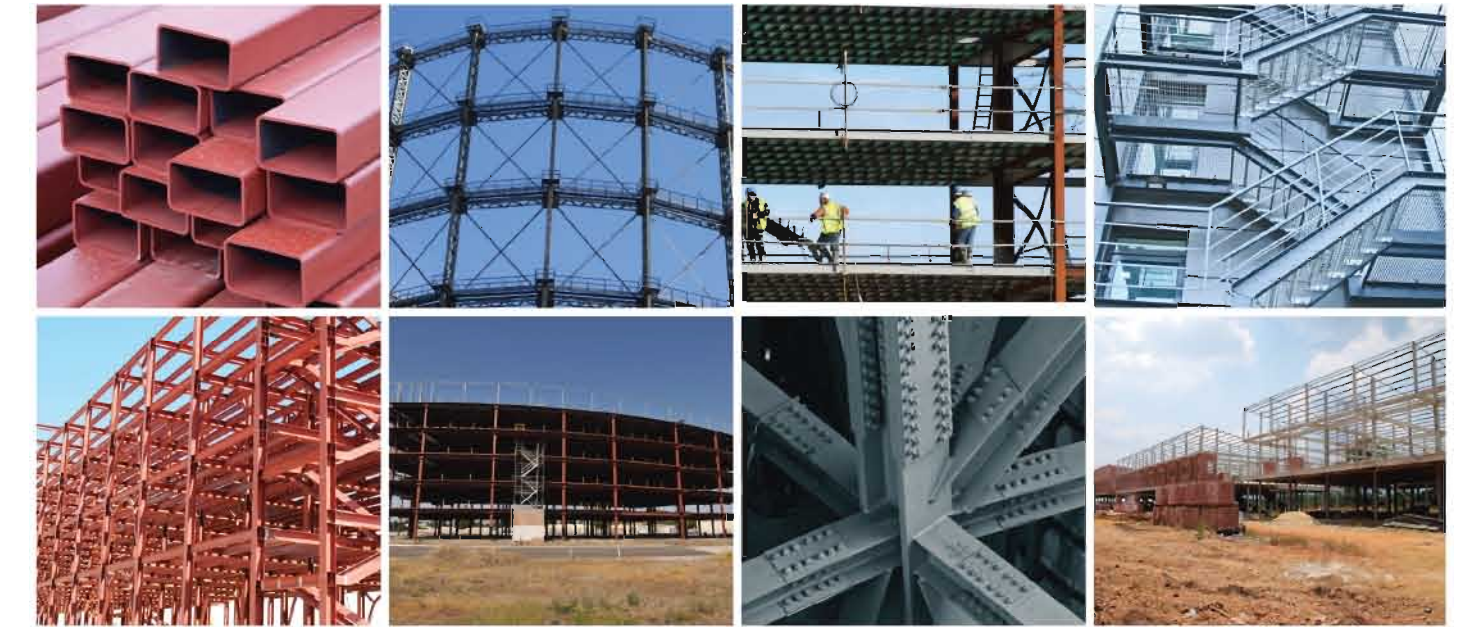
Staffing Services

- Contract Staffing offshore detailers, engineers and estimators
- Direct hire / Contract to hire
- Offshore Services customized to your needs



Projects Completed

- **Commercial/Office:** Office buildings, Shopping plazas, High-rise structures
- **Educational:** Schools/Universities, Dorms, Libraries
- **Medical:** Hospitals, Laboratories
- **Public Sector:** Airport terminals, Hangers, Railway stations, Federal buildings, Defense facilities, Bridges, Civil infrastructure structures, Community centers
- **Industrial:** Petrochemical plants, Refineries, Oil & Gas exploration facilities Conveyor and Material Handling Systems, Power plants, Mining, Electrical test facilities, Offshore Structures
- **Recreational:** Stadiums, Sport complexes, Gyms
- **Project size typical range:** 20 to 10,000 tons



Deliverables

For Structural Steel & Misc. Metal Detailing/Shop Drawings

- Anchor Bolt Drawings
- Embed Plans
- Steel Erection Drawings, Sections, Details
- Structural Steel & Misc. Metal Approval drawings
- Stairs and Railing Approval drawings
- 3D Modeling/BIM (Building Information Modeling)
- Steel fabrication drawings
- Single part drawings, Gather sheets
- Assembly Drawings
- Advance Bill of Material
- Bolt Lists (Fields & Shop)
- CNC, KSS, EJE, DXF files for shop production line
- Customized reports
- FTP access for convenient transfer of files

Locations

Branches: Maryland, Pennsylvania, New Delhi, and Chennai