



Global Leader in Steel Detailing

450+ Detailers, Engineers, and Estimators

About US

Your success and profitability are our objective and aim!

Simsona is one of the fastest growing engineering, estimating and construction services company in world with 450+ highly qualified engineers, detailers, project managers working in multiple shifts to ensure the best quality and on-time work.

We provide engineering design, detailing & shop drawings, drafting, estimating, scheduling, project management, and 3D BIM modeling services.

Simsona provides the most innovative, efficient and cost-effective workforce solution in today's marketplace. Simsona is dedicated to operational excellence as part of a client-centric mind set to assure high quality services.

Services

- ✓ Structural Steel and Misc. Metal Detailing Services
- ✓ Rebar detailing drawings
- ✓ 3D BIM Modeling
- ✓ Structural Steel and Rebar takeoff
- ✓ On Screen takeoff for all type of buildings, civil construction projects, industrial projects
- ✓ Staffing Services – Offshore and Onshore outsourcing services (Providing manpower - Engineers, Estimators, Project Managers, IT Support and other skills as needed by your company).

Experience

Our clients include a range of material Fabricators and Suppliers, Contractors and Builders, Design-Build firms, Consulting Engineering and Design firms, Architects and Owners/Operators across the globe.

We work on projects for the largest multinational firms to mid-size and small companies around the globe. Many of our engineers have worked on some of the largest and most renowned projects in the world including the “World Trade Center” in NY, the “Burj Khalifa” in Dubai, the tallest building in the world and Reliance refinery in India which is the largest refinery in the world.

Additionally, our engineers and detailers have worked on several multi-billion dollar industrial projects. We have done large universities, office buildings, schools, Hi-Rise buildings, federal buildings, defence facilities, electrical test facility. Our industrial project experience spans everything from power plants, petrochemical plants and refineries to cement plants, oil and gas exploration facilities and civil infrastructure structures.

If you are looking to sub out work or are in the process of bidding a project, you can count on our expertise to help you with high quality engineering, detailing and to provide takeoff and estimating services at the onset of the project.

We look forward to demonstrating our skills and providing you with reliable, quality work for years to come.

Strength

High Quality work
Honest and Strong Partnerships
Engineering and Construction Experience: Over 32 Years of Design and Building Construction
Global and Local Delivery Centers

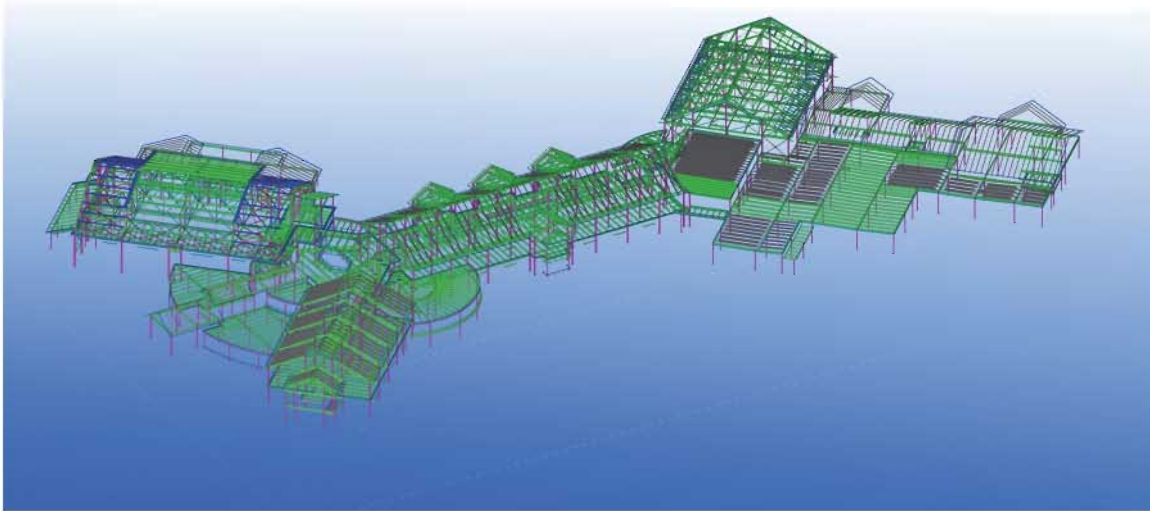
Branches

MARYLAND, PENNSYLVANIA, NEW DELHI, & CHENNAI

Steel Detailing for Woodbridge High School, DE

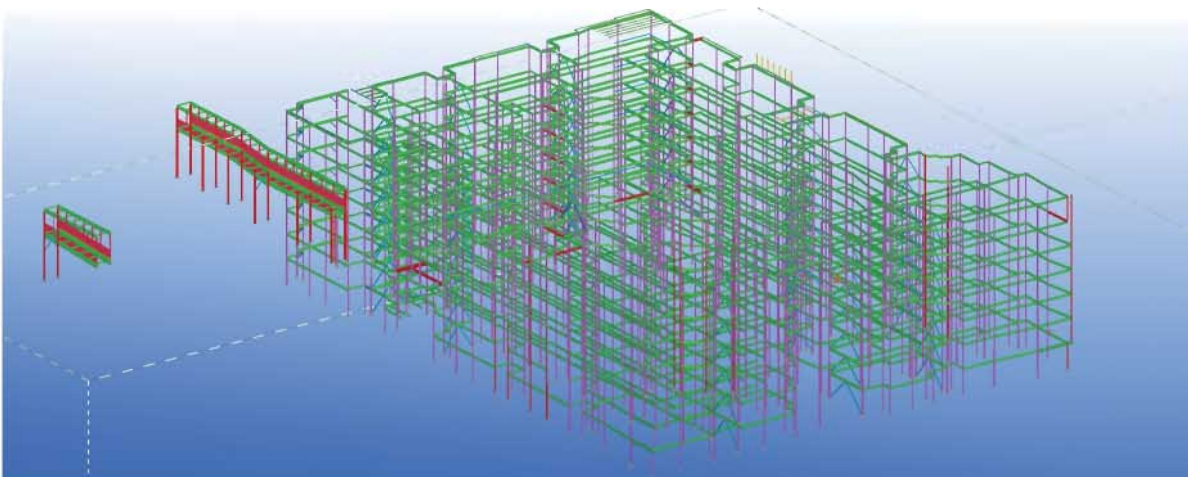
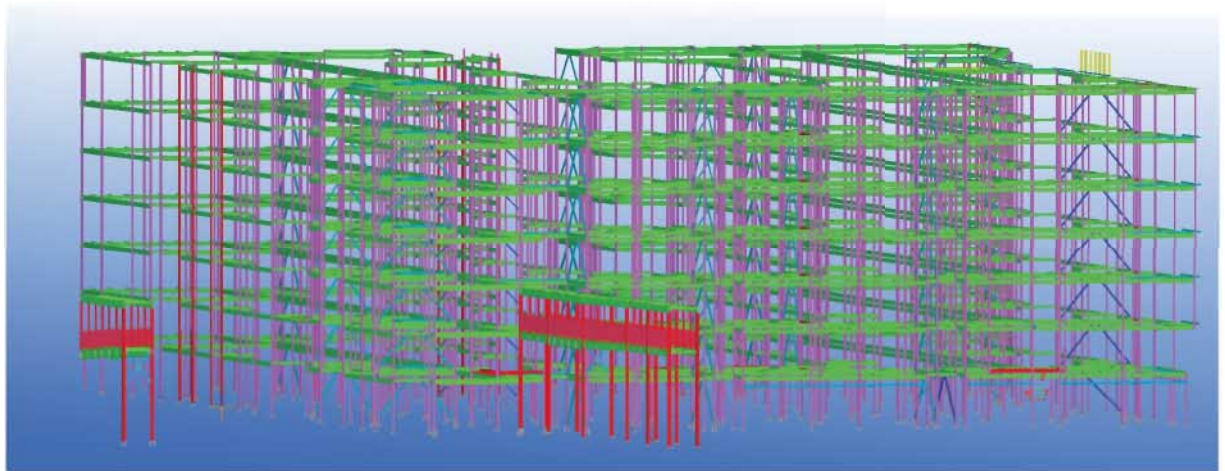
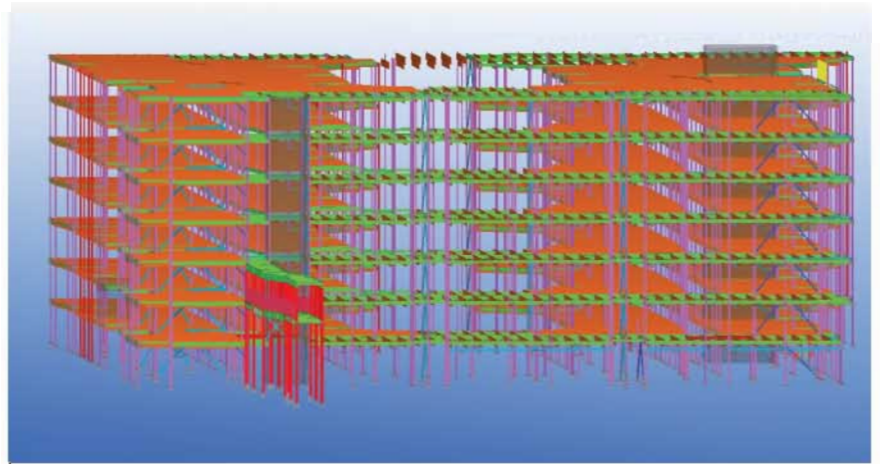
Woodbridge High School in Delaware is 1200+ tons steel detailing project detailed by Simsona

This is \$53 Million construction project. The size of completed school is 160,000 s.f.

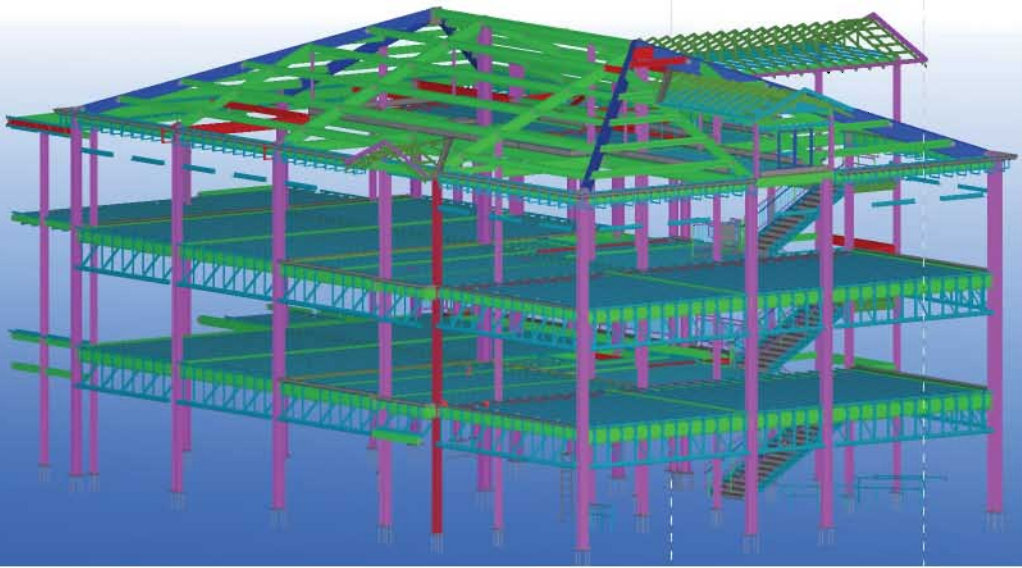


Sterling Northgate Apartments, College Station, Texas

Structural Steel detailing - 1000+ tons



Steel Detailing Projects

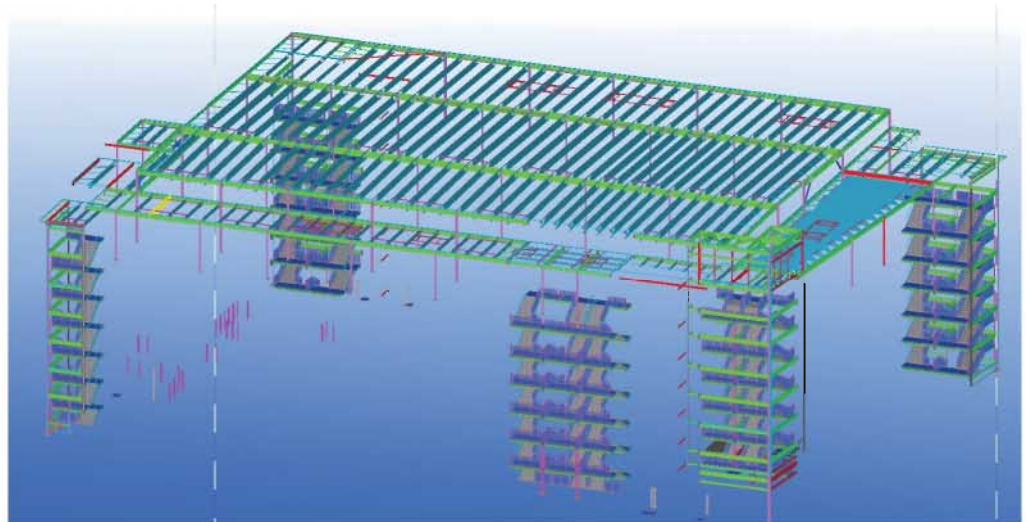


**Louisiana Tech University
West Wing Addition**

Structural Steel &
Misc. Metal detailing

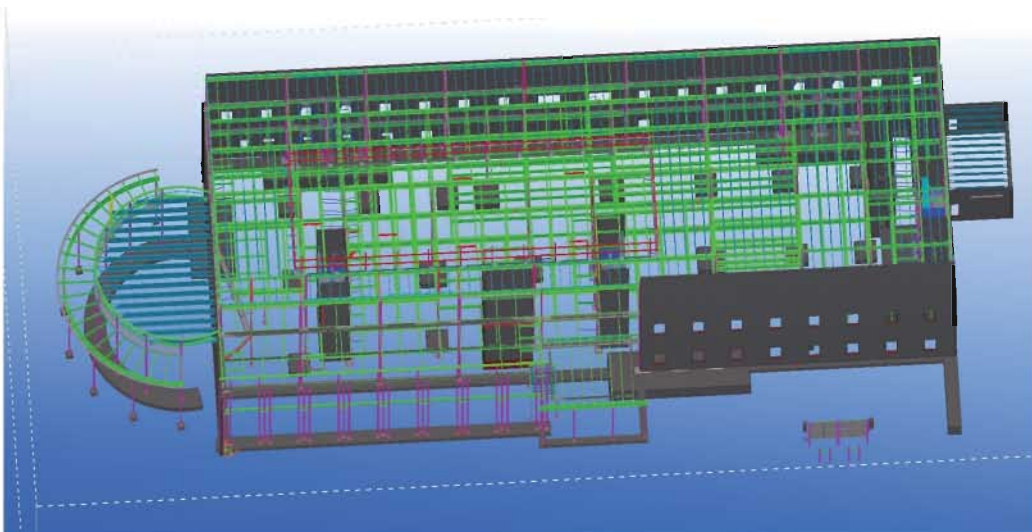
**Dave & Buster's,
New Orleans, LA**

Structural Steel &
Misc. Metal detailing



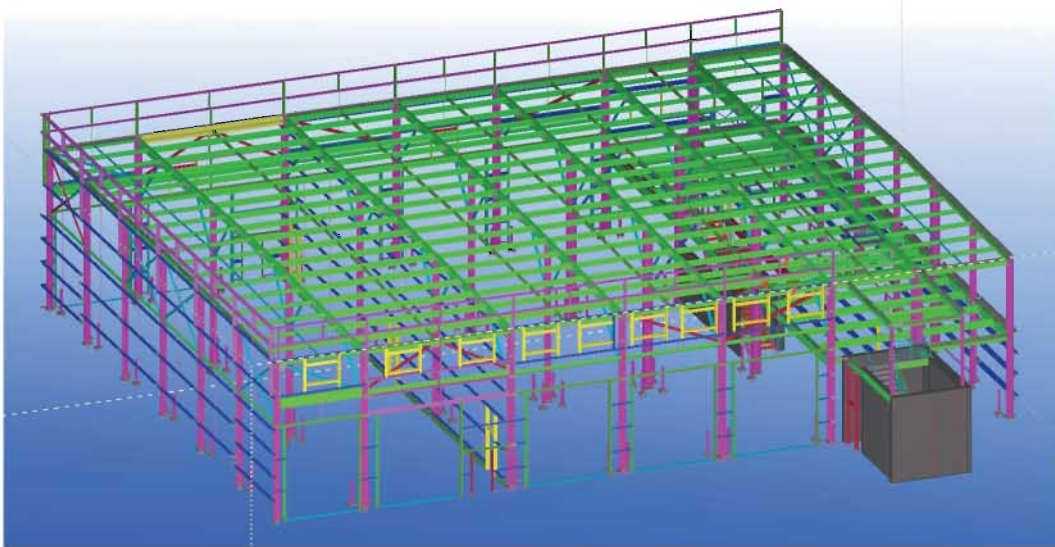
**Mount Pleasant Townhall
South Carolina**

Structural Steel &
Misc. Metal detailing

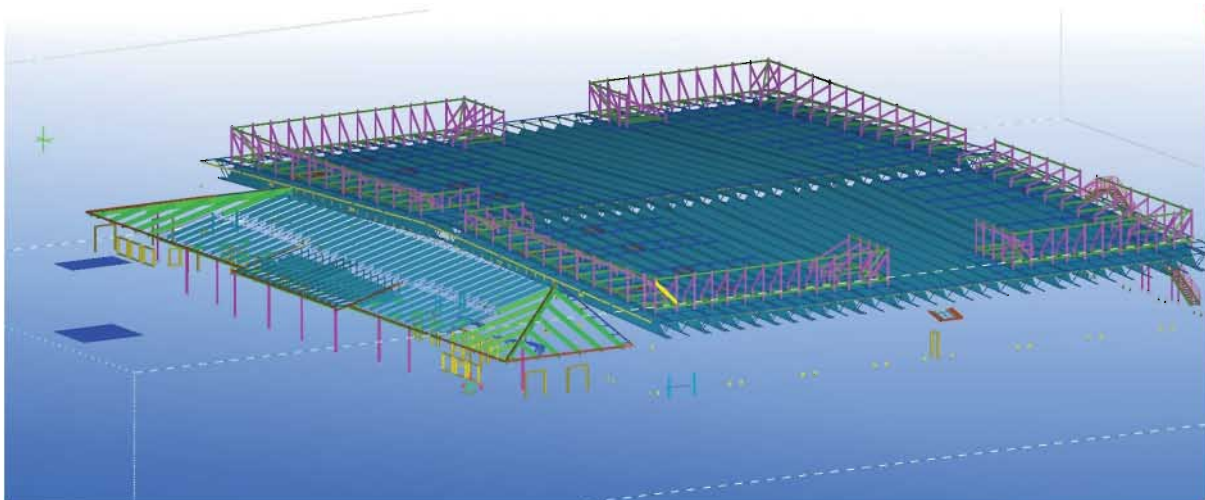


Steel Detailing Projects

Terminal 3 M&R Facility, Harrison County, Mississippi Structural Steel and Misc. Metal detailing



MCB Camp Lejeune, Jacksonville, NC Structural Steel and Misc. Metal detailing



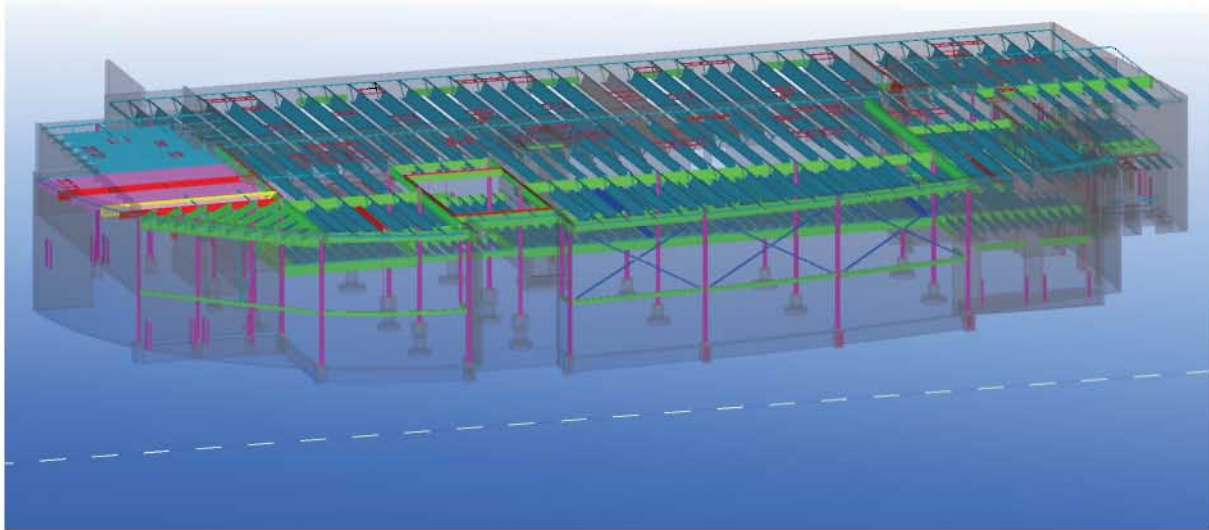
Steel Detailing Refinery Project

Gujarat Refinery 7000+ tons of Structural Steel and Misc. Metal detailing



The Porsche Exchange, Highland Park, IL

Structural Steel & Misc. Metal detailing



Simsona Corp. has become a global leader in the steel detailing industry and engineering services.

We started providing detailing services in 1997. Since then, the company has grown from being a small operation to an organization with 450+ employees skilled in Steel Detailing, Rebar Detailing, Estimation Services and Engineering Services. The secret of our success is the winning combination of experienced project managers, well-trained detailers, engineers and the latest software.

We are committed to our clients' success, working diligently to provide quality in every project that we are part of. We strive to be a valuable resource to the steel detailing and construction industries, providing our services at competitive prices. We follow Standards and guidelines set by AISC, NISD, OSHA.

Services Offered

- Structural Steel Detailing
- Misc. Metal Detailing
- Stair and Railing Detailing
- Connection Design and Calculations
- Stairs, Railing design and Calculations
- Engineering Services
- Estimating Services

Software



Takeoff for Estimating and Bidding

- Steel and Rebar take-off
- Takeoff for all construction trades / divisions

Staffing Services

- Contract Staffing offshore detailers, engineers and estimators
- Direct hire / Contract to hire
- Offshore Services customized to your needs

Projects Completed

- **Commercial/Office:** Office buildings, Shopping plazas, High-rise structures
- **Educational:** Schools/Universities, Dorms, Libraries
- **Medical:** Hospitals, Laboratories
- **Public Sector:** Airport terminals, Hangers, Railway stations, Federal buildings, Defense facilities, Bridges, Civil infrastructure structures, Community centers
- **Industrial:** Petrochemical plants, Refineries, Oil & Gas exploration facilities, Conveyor and Material Handling Systems, Power plants, Mining, Electrical test facilities, Offshore Structures
- **Recreational:** Stadiums, Sport complexes, Gyms
- **Project size typical range:** 20 to 10,000 tons

Locations

Branches: Maryland, Pennsylvania, New Delhi, and Chennai



SIMSONA CORP | 2275 RESEARCH BLVD. SUITE 500, ROCKVILLE, MD 20850
WWW.SIMSONA.COM