

① PART PLAN-MECHANICAL ROOM-PLUMBING
SCALE: 1/4"=1'-0"

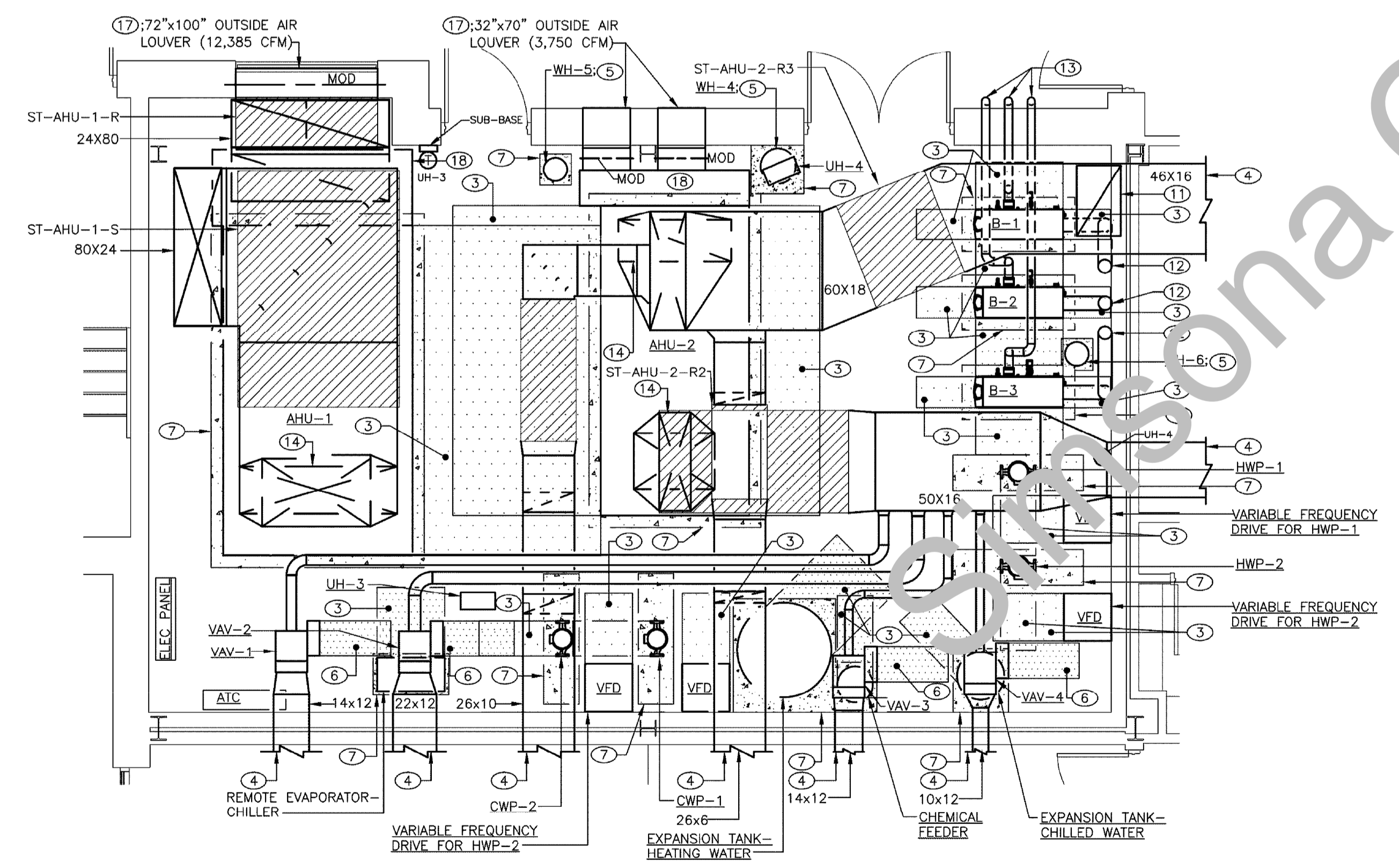
DRAWING NOTES (APPLY TO DRAWING M1.8):

- ① Flexible Elastometric, 1 Inch Thick 35 LF
- ② 4" Sanitary Pipe_Polyvinyl Chloride (PVC) Pipe 252 LF
- ③ 1-1/2" Vent Pipe_Polyvinyl Chloride (PVC) Pipe 154 LF
- ④ 1 1/2" Cold water_Hard Copper Tube (Type-L) 20 LF
- ⑤ 1" Lines from Water Heater to Discharge via Air Gap 52 LF
- ⑥ 3/4" Drain to Discharge via Air Gap into Floor Drain 52 LF
- ⑦ 1-1/2" Hot water_Hard Copper Tube (Type-L) 15 LF
- ⑧ Elbow 45 Degree_4" Dia_PVC Socket Fittings 17 EA
- ⑨ Tee 45 Degree_4" Dia_PVC Socket Fittings 4 EA
- ⑩ Elbow 45 Degree_1-1/2" Dia_PVC Socket Fittings 12 EA
- ⑪ Tee 45 Degree_1-1/2" Dia_Copper Solder Joint Fittings 3 EA
- ⑫ Elbow 90 Degree_4" PVC Socket Fittings 18 EA
- ⑬ Elbow 90 Degree_3/4" Dia_Copper Solder Joint Fittings 22 EA
- ⑭ Double Tee_4" PVC Socket Fittings 4 EA
- ⑮ Elbow 45 Degree_1" Dia_Copper Solder Joint Fittings 4 EA
- ⑯ Elbow 90 Degree_1" Dia_Copper Solder Joint Fittings 5 EA
- ⑰ Tee 45 Degree_1" Dia_2 EA
- ⑱ Tee_4" Dia_PVC Socket Fittings 4 EA
- ⑲ Elbow 90 Degree_1-1/2" Dia_Copper Solder Joint Fittings 7 EA
- ⑳ Shutoff Valve 3 EA
- ㉑ CO_Cleanout Plug 1 EA
- ㉒ Condensate Drain 12 LF
- ㉓ 4" FD-2 4 EA
- ㉔ WH-5 (Water Heater) 1 EA
- ㉕ WH-4 (Water Heater) 1 EA
- ㉖ WH-6 (Water Heater) 1 EA

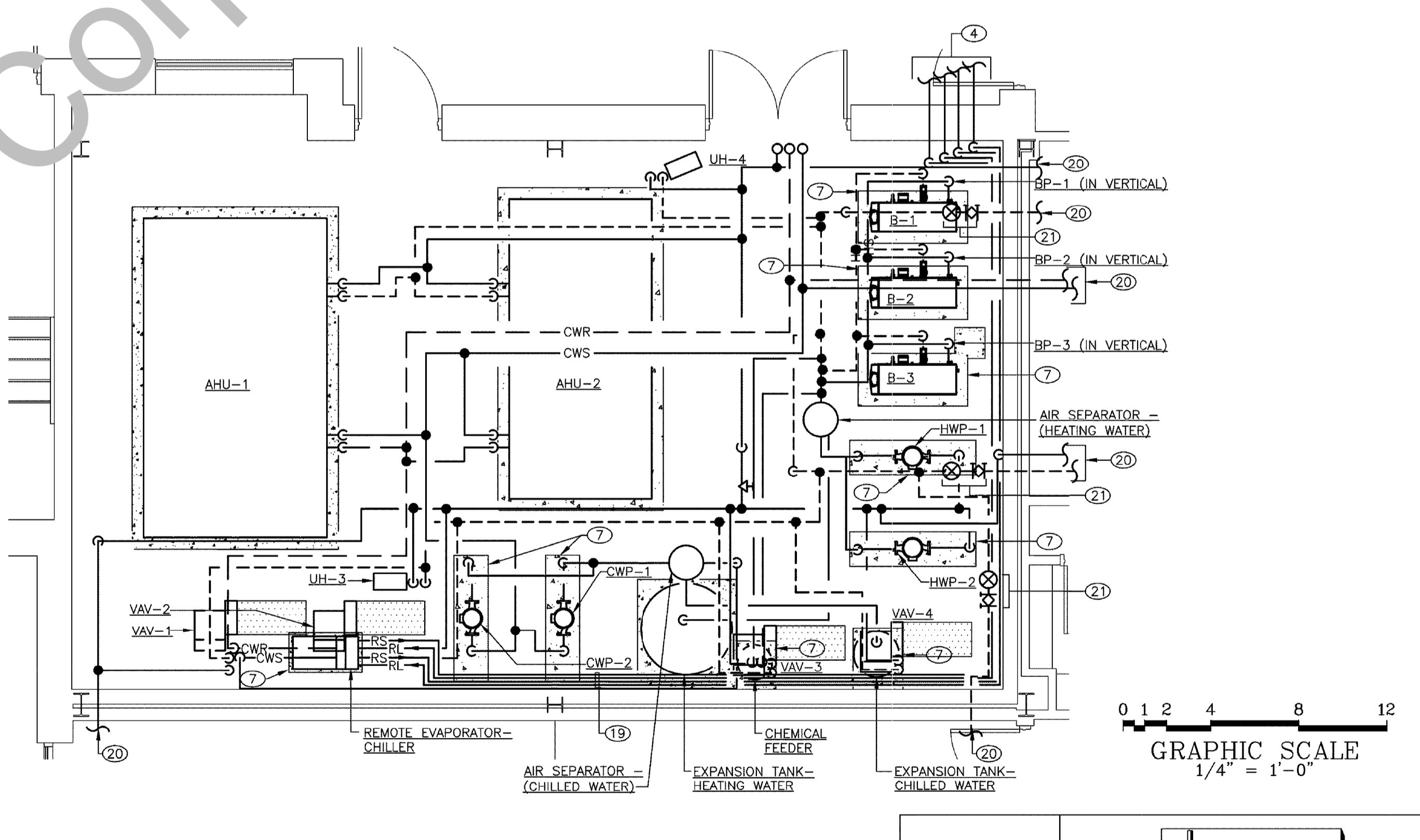
SILENCER SCHEDULE

	FACE DIMENSION 11 INCHES	VELOCITY FT/MIN	SILENCER P.D.* IN WG	P.D. INCL. SYSTEM EFFECTS IN WG	PERFORMANCE CRITERIA	MODEL	NOTES			
Tee 45 Degree_1" Dia_2 EA	120	12,385	+837	0.06	NC 30-35 INDOOR NOISE LEVEL ON OPEN LIBRARY AREA	VIBRO-ACOUSTICS RED-HV-FF-L16868	1,2,3			
Elbow 90 Degree_1-1/2" Dia_Copper Solder Joint Fittings 7 EA	3	0.03	0.11	0.2	NC 30-35 INDOOR NOISE LEVEL ON OPEN LIBRARY AREA	VIBRO-ACOUSTICS RD-HV-F3-L16868	1,2			
Shutoff Valve 3 EA	18	52	96	7,500	+1154	0.12	0.15	NC 35-40 INDOOR NOISE LEVEL ON OFFICES	VIBRO-ACOUSTICS RED-HV-FC-L16868	1,2,3
CO_Cleanout Plug 1 EA	28	12	72	1,240	-531	0.07	0.26	NC 35-40 INDOOR NOISE LEVEL ON OFFICES	VIBRO-ACOUSTICS RD-MLV-F2-L16868	1,2
Condensate Drain 12 LF	28	8	48	540	-47	0.06	0.22	NC 35-40 INDOOR NOISE LEVEL ON OFFICES	VIBRO-ACOUSTICS RD-ULV-F2-L16868	1,2
4" FD-2 4 EA	48	18	60	4,480	-74	0.08	0.29	NC 35-40 INDOOR NOISE LEVEL ON OFFICES	VIBRO-ACOUSTICS RD-MLV-FJ-L16868	1,2

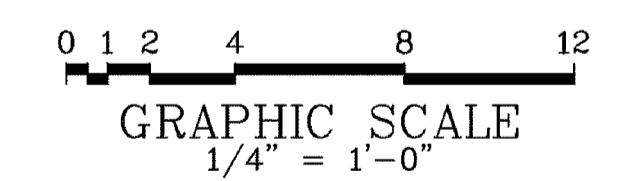
* P.D. INCL. SYSTEM EFFECTS IN WG IS THE SUM OF THE P.D. IN WG FOR ALL SILENCERS IN THE SYSTEM. THE SCHEDULED SILENCER PRESSURE DROP(S) IS REPORTED IN ACCORDANCE WITH ASTM E477 TEST METHODS. THE PRESSURE DROP(S) ARE AT IDEAL FLOW CONDITIONS (3-4 DUCT DIAMETERS OF STRAIGHT DUCT ON SILENCER INLET AND 4-5 DUCT DIAMETERS OF STRAIGHT DUCT ON SILENCER OUTLET). LESS THAN IDEAL CONDITIONS WILL RESULT IN INCREASE IN PRESSURE DROP.



② PART PLAN-MECHANICAL ROOM
SCALE: 1/4"=1'-0"



③ PART PLAN-MECHANICAL ROOM
SCALE: 1/4"=1'-0"



ASquared Engineering Support Group, LLC

3477 SHILOH ROAD, HAMPSTEAD, MARYLAND 21074
PHONE: 443.977.9741 FAX: 410.374.5471
WWW.AS2SG.COM © COPYRIGHT 2014

PROFESSIONAL CERTIFICATION:
I HEREBY CERTIFY THAT THESE DOCUMENTS WERE PREPARED OR APPROVED BY ME, AND THAT I AM A DULY LICENSED PROFESSIONAL ENGINEER UNDER THE LAWS OF THE STATE OF MARYLAND, LICENSE NO. 36773, EXPIRATION DATE: 01-18-15

MANN'S WOODWARD STUDIOS
ARCHITECTURE | INTERIORS | MASTER PLANNING

10839-D PHILADELPHIA RD
WHITE MARSH, MD 21162

WWW.MANSARCH.COM
(P) 410-344-1460
(F) 443-403-2460

PART PLANS
HARFORD COUNTY PUBLIC LIBRARY
HAVRE DE GRACE LIBRARY
120 NORTH UNION AVENUE, HAVRE DE GRACE,
MARYLAND 21078

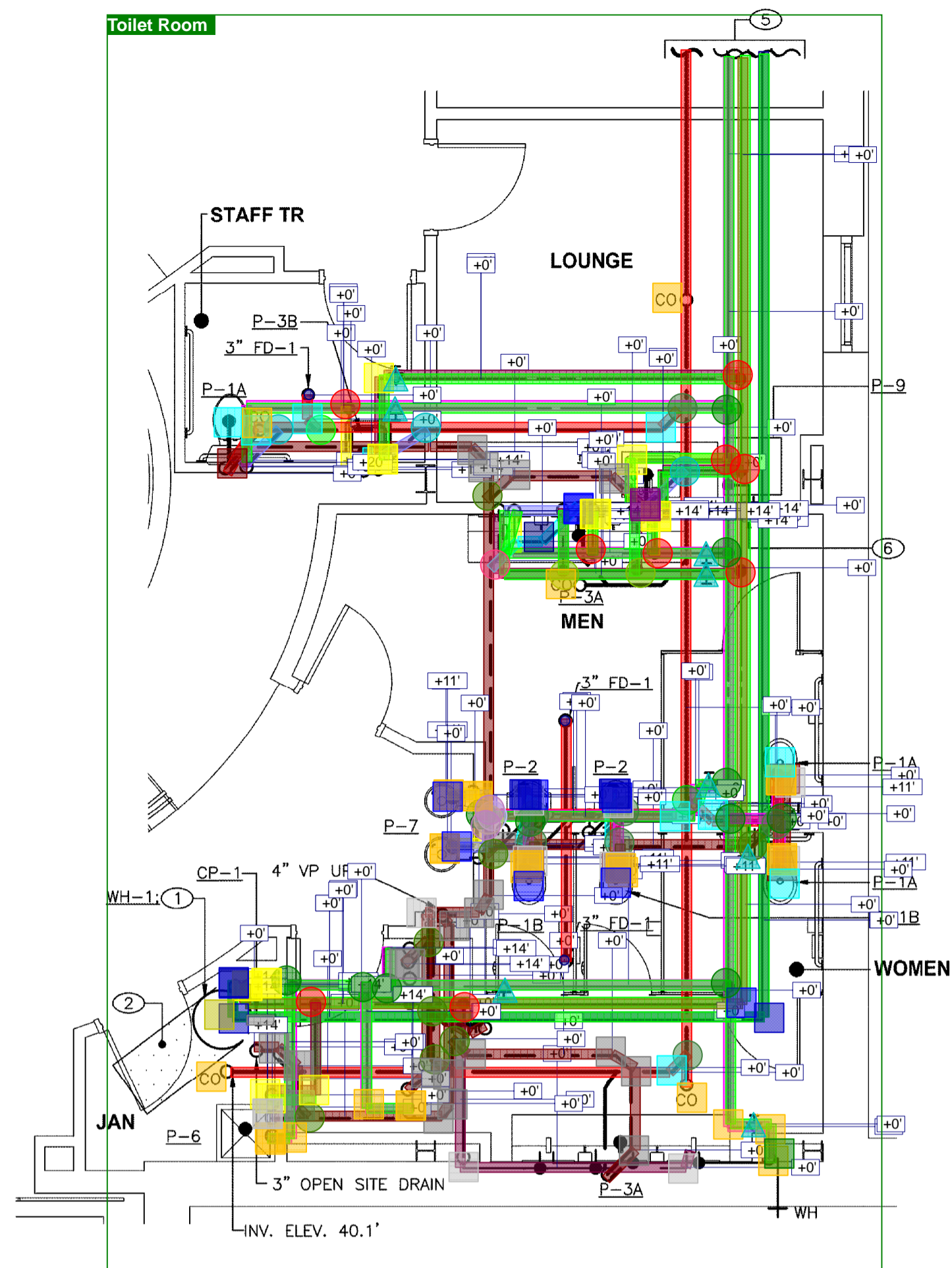
NO.	DESCRIPTION	DATE

PROJECT NUMBER: 13-026
PROJECT SET: HD SET
DATE ISSUED: 7.23.14

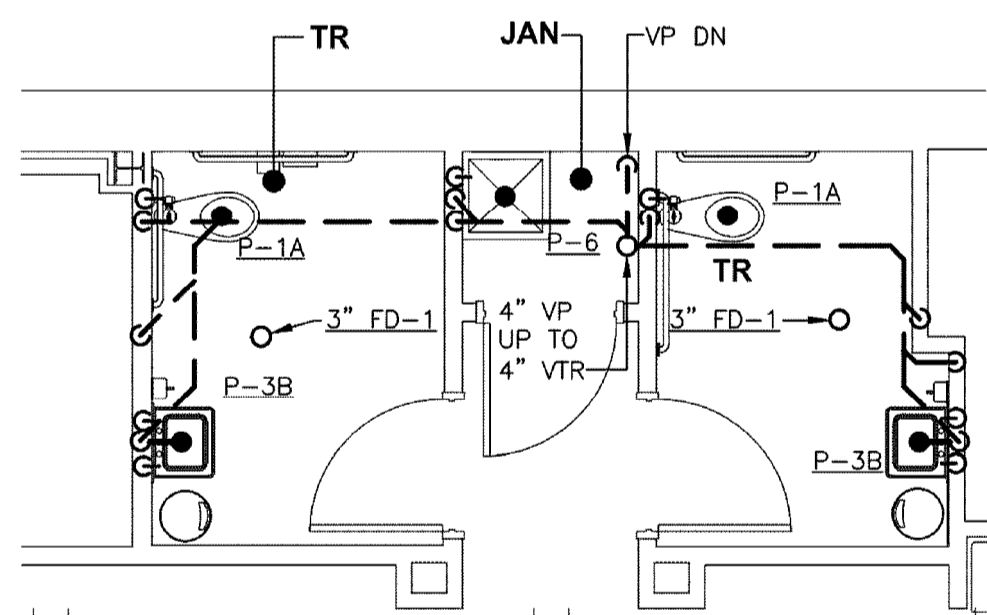
DRAWING TITLE: PART PLANS

SHEET NUMBER: **M1.8**

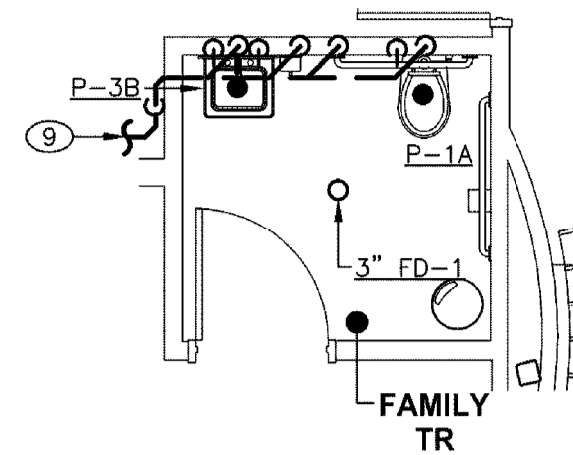
ALL DRAWINGS ARE PROTECTED BY FEDERAL COPYRIGHT BY MANN'S WOODWARD STUDIOS, INC. AND CAN NOT BE REPRODUCED OR MODIFIED IN ANY MANNER WITHOUT WRITTEN PERMISSION. DOCUMENTS MAY NOT BE USED IN PART OR WHOLE TO DEVELOP THE DESIGN OF ANOTHER BUILDING WITHOUT EXPRESS WRITTEN PERMISSION BY MANN'S WOODWARD STUDIOS.



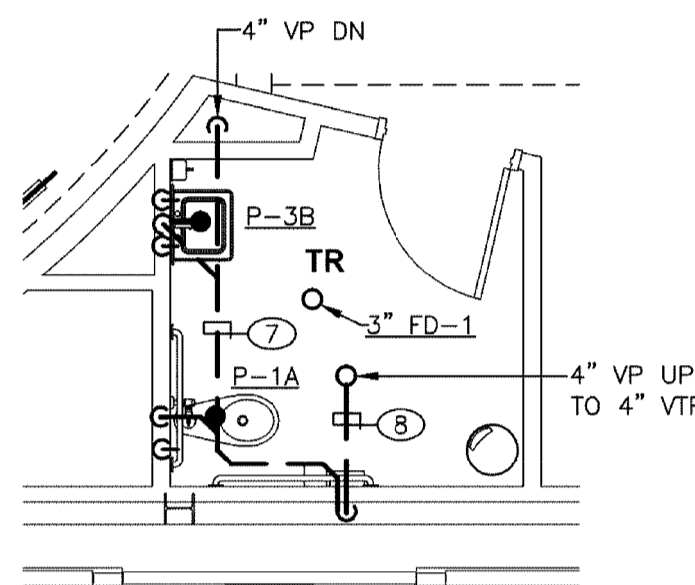
1 PART PLAN-TOILET ROOM-PLUMBING
SCALE: 1/4"=1'-0"



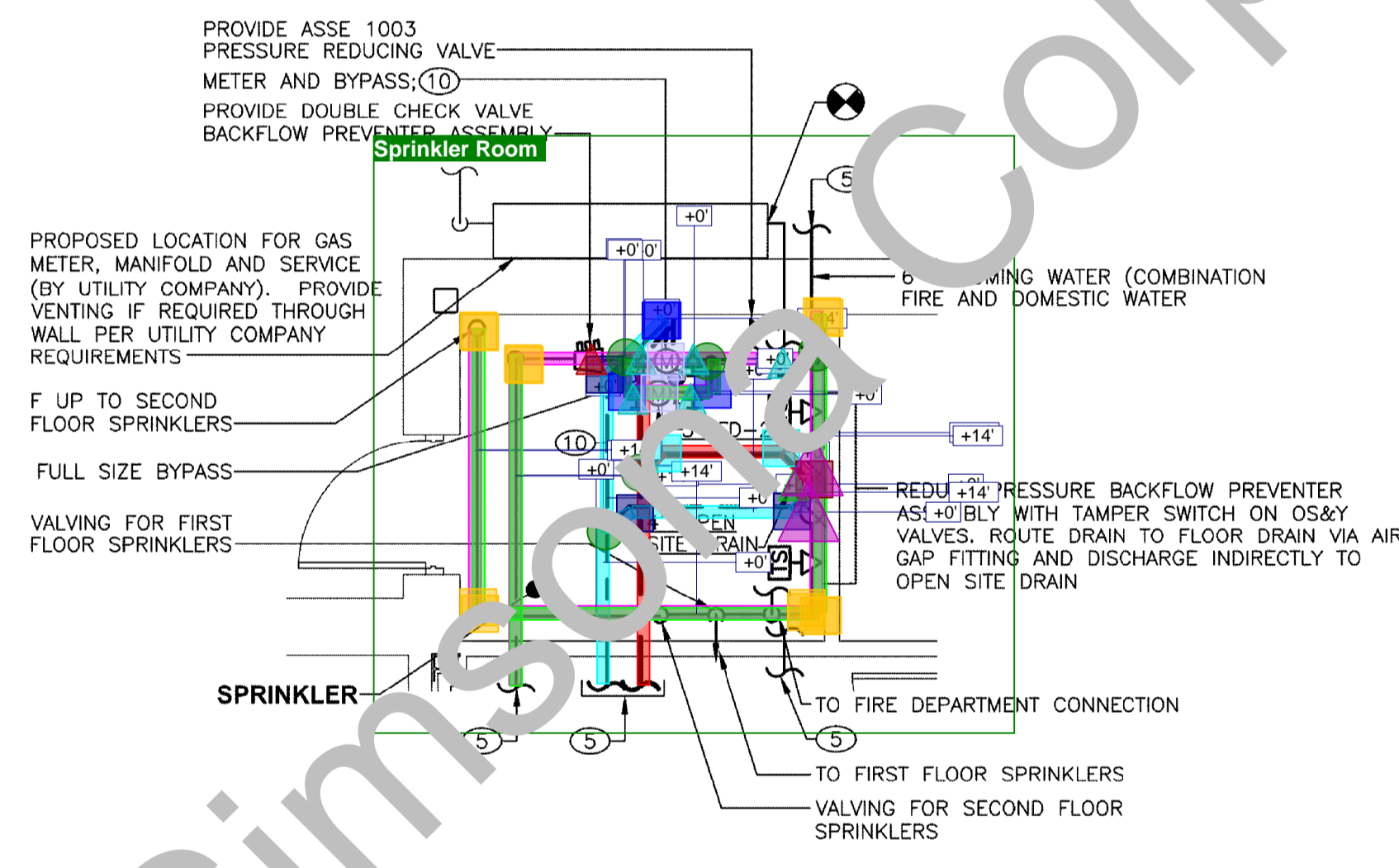
2 PART PLAN-TOILET ROOM-PLUMBING
SCALE: 1/4"=1'-0"



3 PART PLAN-TOILET ROOM-PLUMBING
SCALE: 1/4"=1'-0"



4 PART PLAN-TOILET ROOM-PLUMBING
SCALE: 1/4"=1'-0"

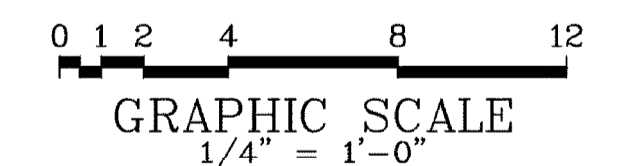


5 PART PLAN-SPRINKLER ROOM-PLUMBING
SCALE: 1/4"=1'-0"

DRAWING NOTES (APPLY TO DRAWING M1.9):

- 1 SEE DETAIL-GAS FIRED WATER HEATER ON DRAWING M1.5.
- 2 PROPOSED EQUIPMENT CLEARANCE (SHOWN FOR COORDINATION ONLY).
- 3 ELECTRIC WATER HEATER LOCATED UNDER SINK.
- 4 SEE DETAIL-FLOW METER FITTING ON DRAWING M1.4.
- 5 FOR CONTINUATION SEE FIRST FLOOR PLAN-PLUMBING ON DRAWING M1.4.
- 6 PROVIDE ASSE STANDARD 1035 ATMOSPHERIC VACUUM BREAKER. PROVIDE ICE MAKER WATER BOX.
- 7 PIPING LOCATED ABOVE TOILET ROOM CEILING.
- 8 PIPING LOCATED IN BULKHEAD.
- 9 FOR CONTINUATION SEE SECOND FLOOR PLAN-PLUMBING ON DRAWING M1.5.
- 10 METER SUPPLIED BY CITY OF HAVRE DE GRACE, CONTRACTOR TO INSTALL PER CITY OF HAVRE DE GRACE REQUIREMENTS.

- Flexible Elastomeric_1 Inch Thick 566 LF
- Elbow 90 Degree_1-1/2" Dia._PVC Socket Fittings 11 EA
- 4" Sanitary Pipe_Polyvinyl Chloride (PVC) Pipe 109 LF
- 2" Sanitary Pipe_Polyvinyl Chloride (PVC) Pipe 2 LF
- 1-1/2" Vent Pipe_Polyvinyl Chloride (PVC) Pipe 68 LF
- 1 1/2" Cold water_Hard Copper Tube (Type-L) 307 LF
- 1/2" Cold water_Hard Copper Tube (Type-L) 107 LF
- 1 1/2" Sanitary Pipe_Polyvinyl Chloride (PVC) Pipe 15 LF
- 1/2" Hot water_Hard Copper Tube (Type-L) 143 LF
- 3/4" HWC_Hot Water Circulating_Hard Copper Tube (Type-L) 53 LF
- 2" VP_Vent Pipe_Polyvinyl Chloride (PVC) Pipe 161 LF
- 1-1/2" Hot water_Hard Copper Tube (Type-L) 64 LF
- Elbow 45 Degree_4" Dia._PVC Socket Fittings 8 EA
- Tee 45 Degree_4" Dia._PVC Socket Fittings 1 EA
- Tee_1-1/2" Dia. with Reducing Arm 1/2" _Copper Solder Joint Fittings 9 EA
- Elbow 90 Degree_1/2" Dia._Copper Solder Joint Fittings 15 EA
- Elbow 45 Degree_1-1/2" Dia._PVC Socket Fittings 4 EA
- Tee_1-1/2" Dia._Copper Solder Joint Fittings 15 EA
- Elbow 90 Degree_2" Dia._Copper Solder Joint Fittings 2 EA
- Elbow 90 Degree_4" _PVC Socket Fittings 8 EA
- Elbow 45 Degree_2" Dia._PVC Socket Fittings 21 EA
- Elbow 90 Degree_3/4" Dia._Copper Solder Joint Fittings 8 EA
- Tee 45 Degree_4" Dia. with Reducing Arm 1-1/2" _PVC Socket Fittings 3 EA
- Double Tee_4" _PVC Socket Fittings 1 EA
- Tee_4" Dia._PVC Socket Fittings 8 EA
- Tee 45 Degree_2" Dia._PVC Socket Fittings 8 EA
- Tee 45 Degree_2" Dia. with Reducing 1-1/2" _PVC Socket Fittings 1 EA
- Tee_1/2" Dia._PVC Socket Fittings 2 EA
- Tee_1-1/2" Dia. with Reducing Arm 3/4" _PVC Socket Fittings 2 EA
- Tee_2" Dia. with Reducing Arm 1-1/2" _Copper Solder Joint Fittings 1 EA
- Tee_4" Dia. with Reducing Arm 1-1/2" _PVC Socket Fittings 1 EA
- Elbow 90 Degree_1-1/2" Dia._Copper Solder Joint Fittings 35 EA
- Elbow 90 Degree_2" Dia._PVC Socket Fittings 13 EA
- Shutoff Valve 13 EA
- Water Heater 1 EA
- CO_Cleanout Plug 5 EA
- Check Valve 2 EA
- P-1A_Water Closet 3 EA
- P-1B_Water Closet 2 EA
- 3" FD-2 4 EA
- CP_Domestic Water Pump 1 EA
- 4" Open Drain Valve 1 EA
- Double Check Valve 1 EA
- WH-1 (Water Heater) 1 EA
- Meter supplied 2 EA



PROFESSIONAL CERTIFICATION:
I HEREBY CERTIFY THAT THESE DOCUMENTS WERE PREPARED OR APPROVED BY ME, AND THAT I AM A DULY LICENSED PROFESSIONAL ENGINEER UNDER THE LAWS OF THE STATE OF MARYLAND, LICENSE NO. 36773, EXPIRATION DATE: 01-18-15

ASquared Plus Engineering Support Group, LLC
3477 SHILOH ROAD, HAMPSTEAD, MARYLAND 21074
PHONE: 443.977.9741 FAX: 410.374.5471
WWW.AS2SG.COM © COPYRIGHT 2014

CONSULTANT

SEAL

MANN'S WOODWARD STUDIOS
ARCHITECTURE | INTERIORS | MASTER PLANNING
10832-D PHILADELPHIA RD
WHITE MARSH, MD 21162
WWW.MANSARCH.COM
(P) 410-344-1460
(F) 443-403-2460

PART PLANS
HARFORD COUNTY PUBLIC LIBRARY
HAVRE DE GRACE LIBRARY
120 NORTH UNION AVENUE, HAVRE DE GRACE,
MARYLAND 21078

NO.	DESCRIPTION	DATE

PROJECT NUMBER:
13-026
PROJECT SET:
BID SET
DATE ISSUED:
7.23.14

DRAWING TITLE:
PART PLANS

SHEET NUMBER:
M1.9