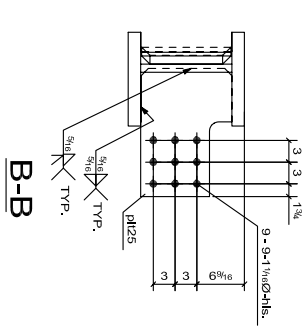
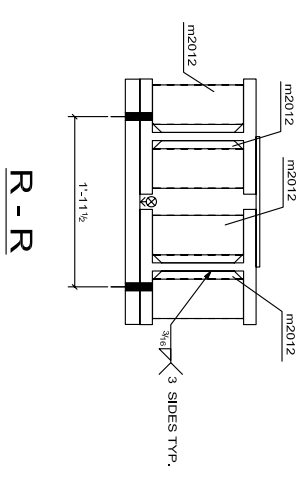
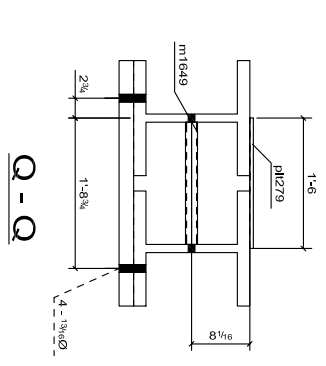
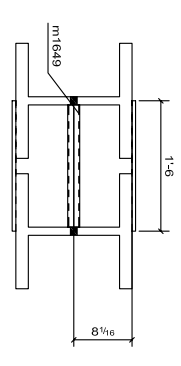
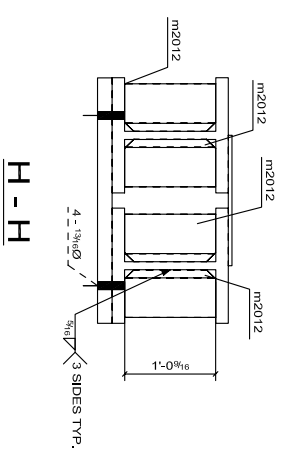
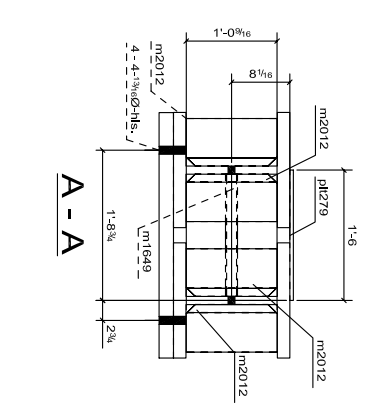
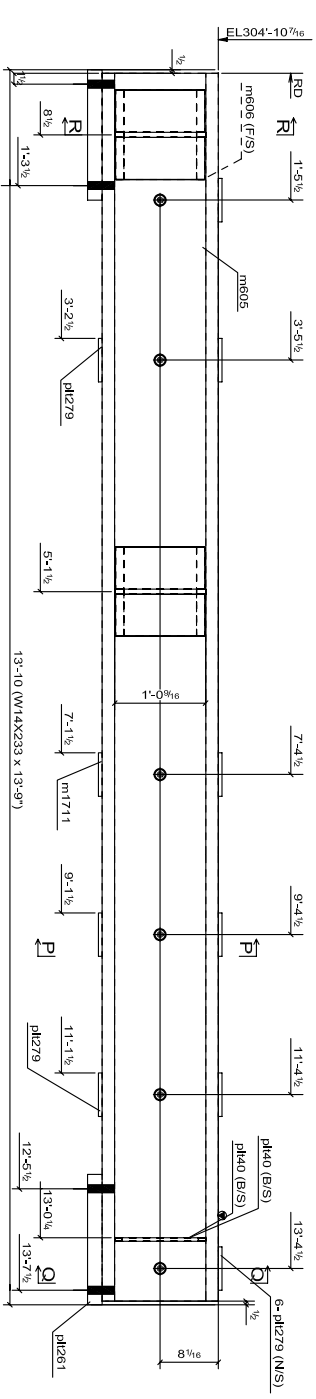
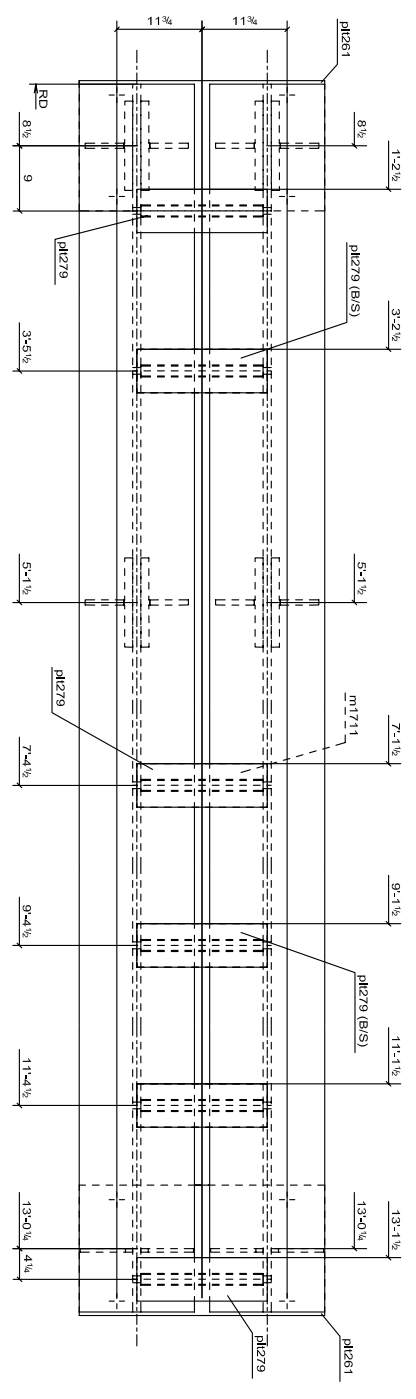
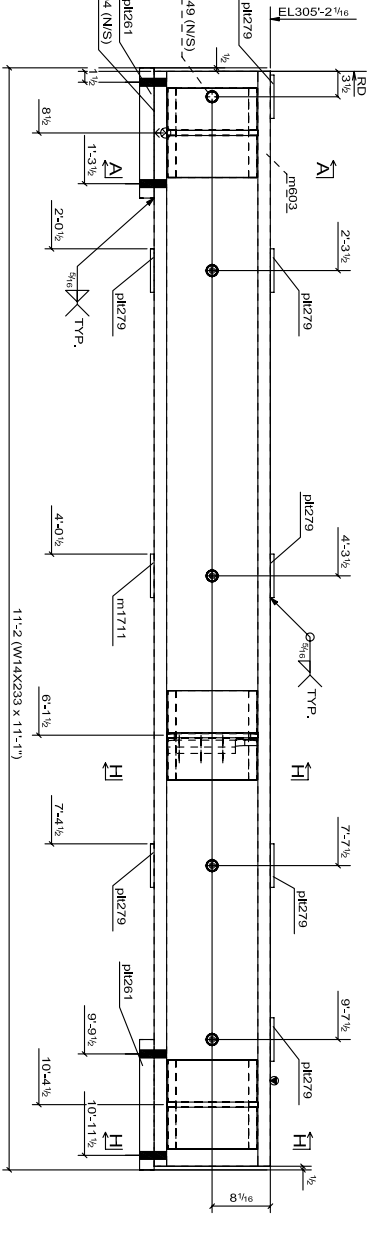
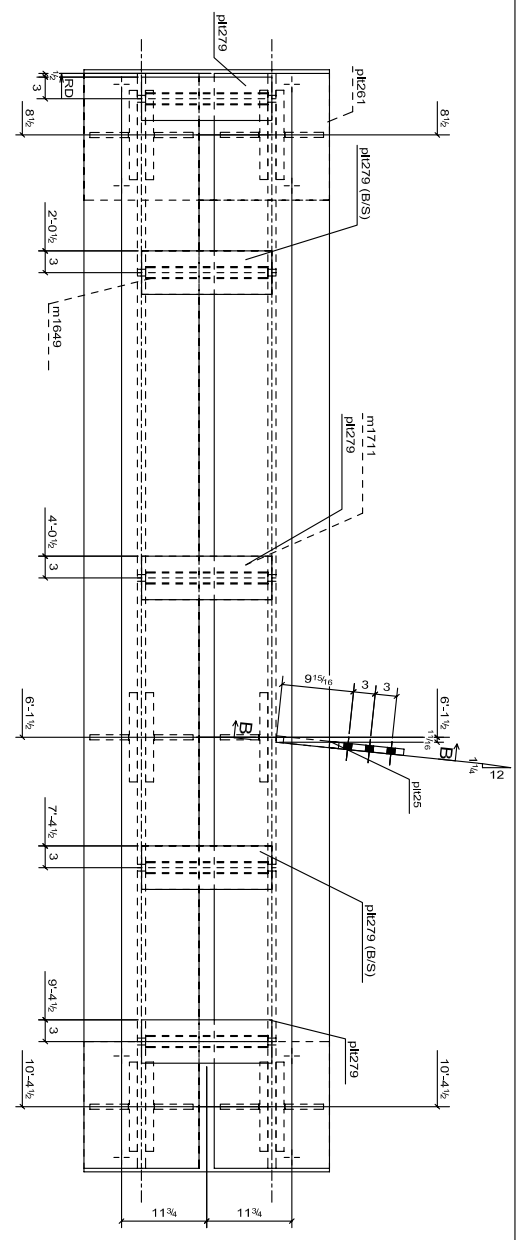


QTY.	MARK	DESCRIPTION	LENGTH	GRD.	REMARKS
1	1002TB	W4X23	11'-1"	A892	SEC-2
1	m604	W4X23	11'-1"	A892	
5	m1649	PPE-1.14/90_SCH. 40	1-4 7/8"	A33	
1	m1711	PL1206	1'-0"	A36	
11	m2012	WTRX60	1'-0 9/16"	A892	
1	pl25	PL7/8X12.5/8	1-5 11/16"	A36	
2	pl281	PL2 X18	2-9 7/8"	A36	
7	pl279	PL12X6	1'-0"	A36	
1	1002TB	W4X23	13'-0"	A892	SEC-2
1	m806	W4X23	13'-0"	A892	
6	m1649	PPE-1.14/90_SCH. 40	1-4 7/8"	A33	
1	m1711	PL12X6	1'-0"	A36	
8	m2012	WTRX60	1'-0 9/16"	A892	
4	pl40	PL12X7 1/4	1'-0 9/16"	A36	
2	pl261	PL2 X18	2-9 7/8"	A36	
9	pl279	PL12X6	1'-0"	A36	



ONE - TRANSFER BEAM - 1002TB1

ONE - TRANSFER BEAM - 1002TB2

REF. :- E2001
 PAINT :- NO PAINT
 HOLES :- 15/160 U.N.O

REV.	DESCRIPTION	BY	DATE
1	ISSUE FOR FABRICATION	BS	07/05/2007

PROJECT
 NEWARK LIBERTY INTERNATIONAL
 AIRPORT

SUBJECT
 BEAM DETAIL

DRAWN BY	CHECKED BY	DATE
BS	PAC	07/05/2007

CONTRACT #	DRAWING #	ISSUE
PRISMATIC DEVELOPMENT CORP	1002	0