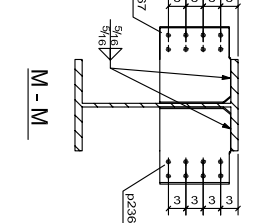
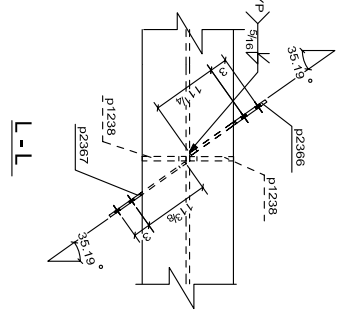
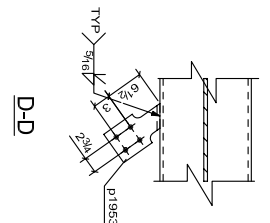
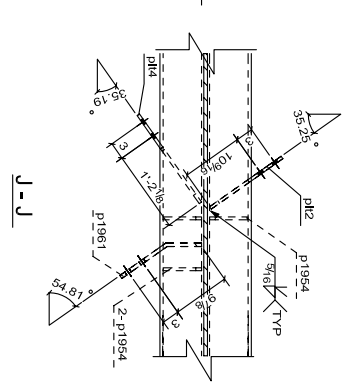
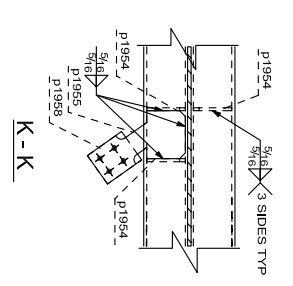
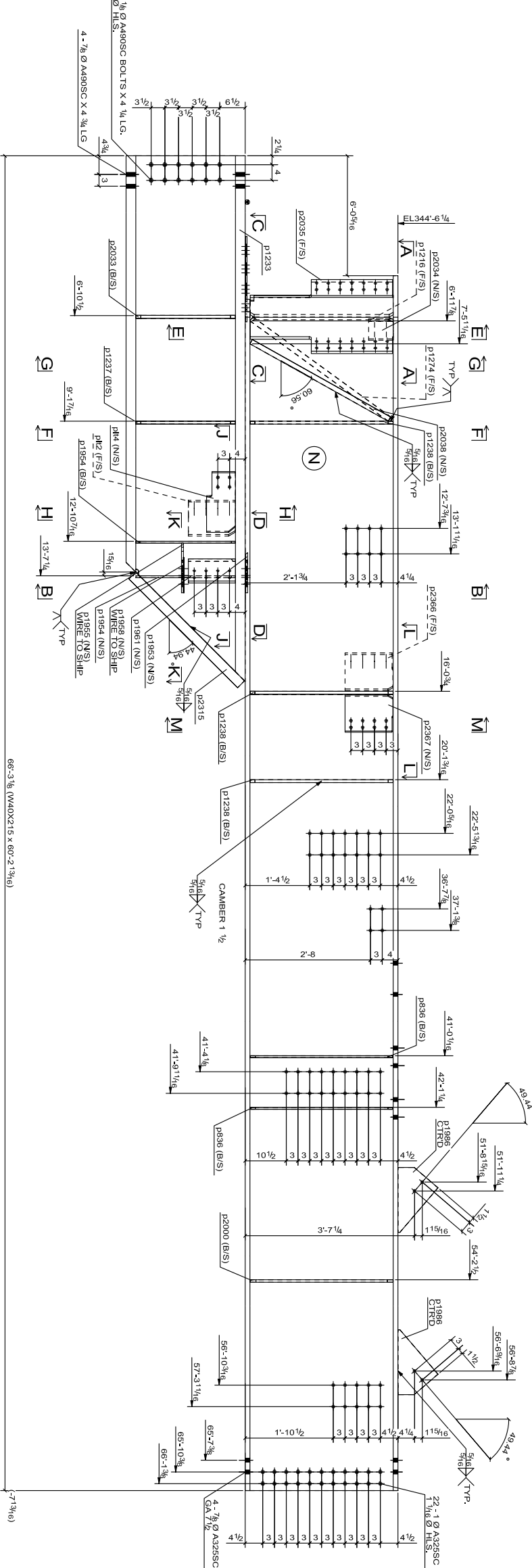
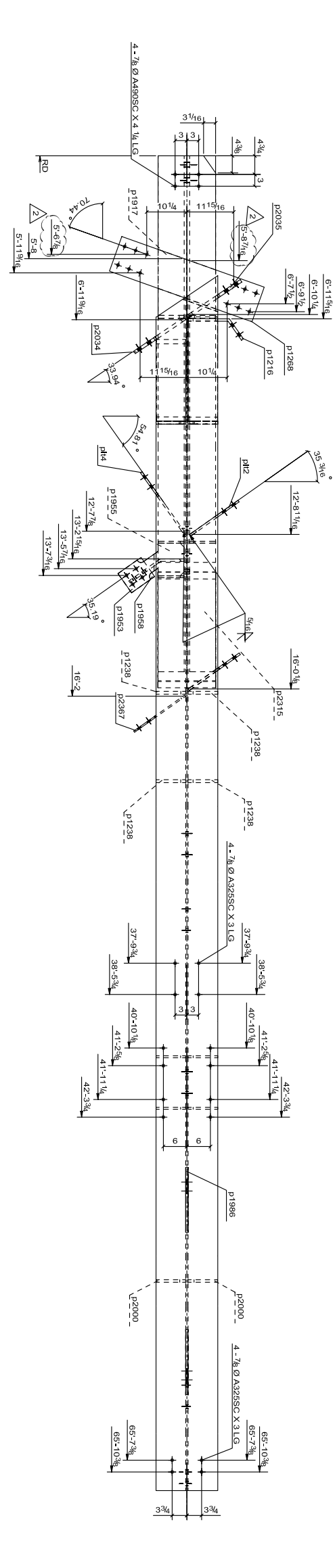


TOTAL QTY	UNIT	MARK	DESCRIPTION	LENGTH	UNIT WT.	REMARKS
1	A236	BEAM				
1	W188	W40X215		60'-2.1316"	12975.2	A992
4	P836	P1/2X7 9/16		3-0.716"	155.3	44W
1	P1216	P1/8X8 1/4		1-4.188"	18.1	44W
1	P1233	W27X98		15'-0.114"	3666.7	A992
2	P1237	P1/8X8 5/8		2-1.388"	38.3	44W
6	P1238	P1/8X9 9/16		3-0.172"	351.1	44W
1	P1268	P1/8X9 3/8		3-2.916"	116	44W
1	P1274	P1.1/8X7 1/2		3-2.916"	5.2	44W
1	P1953	P1/2X6 5/8		2-1.988"	6.9	A572-GR-50
3	P1954	P1/2X6 5/8		2-1.988"	71.1	44W
1	P1955	P1/2X10		1-5.1116"	15	A572-GR-50
1	P1958	P1/8X8 5/8		0-2.216"	2.3	44W
1	P1961	P1/8X12		1-3.172"	33.4	44W
2	P1966	P1/8X10 1/4		1-4.916"	34.9	44W
2	P2000	P1/8X7 1/2		3-0.172"	96.4	44W
2	P2033	P1/8X8 5/8		2-1.988"	70.7	44W
1	P2034	P1/8X15 7/16		3-0.172"	97.9	44W
1	P2035	P1/8X16		3-0.172"	100.3	44W
1	P2038	P1.1/8X7 1/2		3-4.716"	107.6	44W
1	P2315	P1.2/8X14 3/4		3-3.174"	47.3	44W
1	P2366	P1/2X12 1/4		1-3.1516"	27.3	44W
1	P2367	P1/8X12 1/4		1-3.1516"	20.4	44W
1	P12	P1/2X12		1-3.188"	25.5	44W
1	P14	P1/2X7 3/8		1-5.588"	17.8	44W

TOTAL WT = 20694.9



ONE BEAM A236  
DIV-9

REF: DWG NO-E4

REV.	DESCRIPTION	BY	DATE
A	FABRICATION	AS	01.03.08

CUSTOMER: NEWARK LIBERTY INTERNATIONAL AIRPORT

SUBJECT: BEAM DETAIL

DRAWN BY: AS	CHECKED BY: DATE
AS	01-03-08
CONTRACT # 1183	DRAWING # 236
ISSUE # 1	2