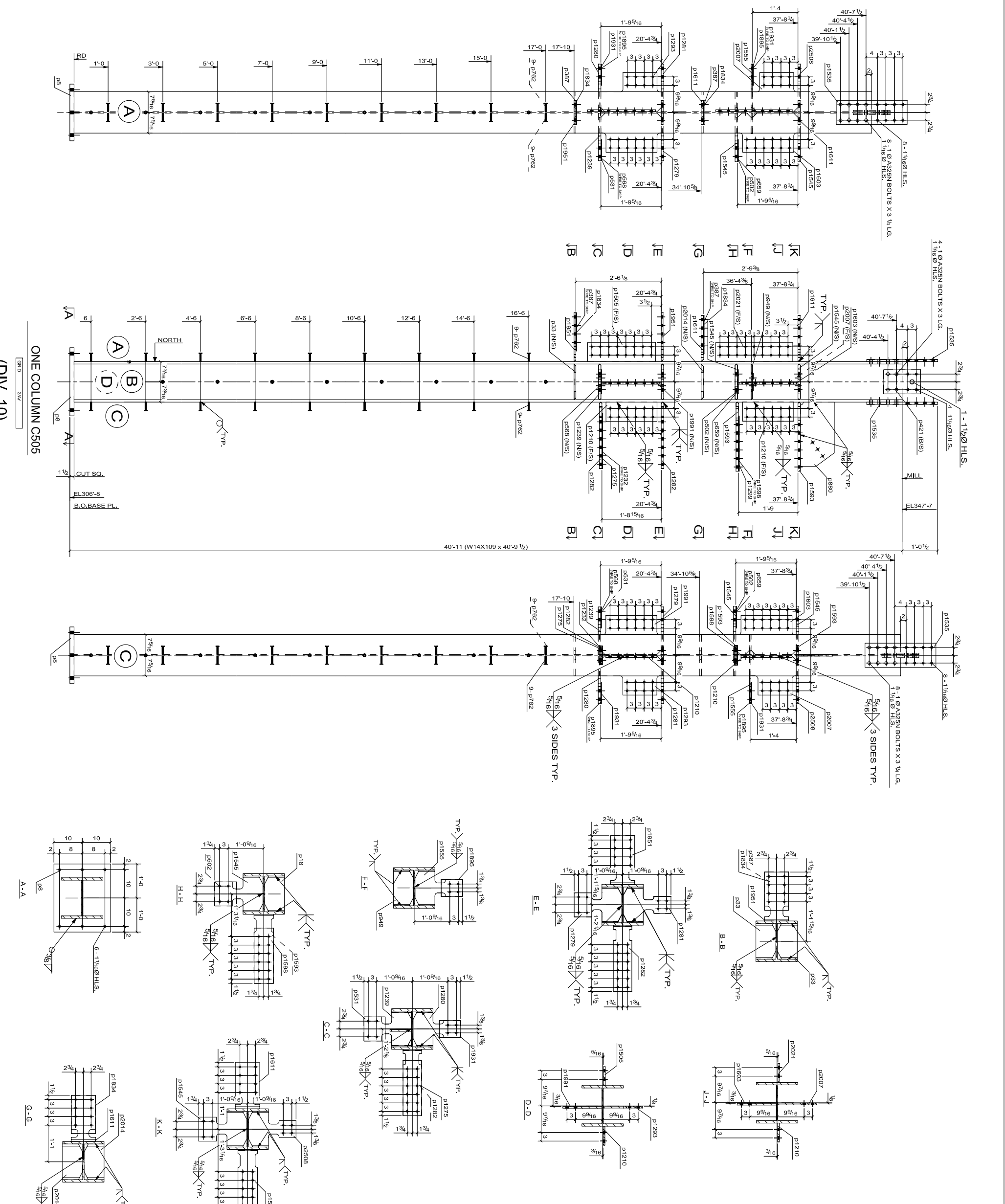


BILL OF MATERIAL					
QTY	MK.	SIZE	LENGTH	lbs.	REMARKS
1	10212'	W14X109	40'-7 1/2"	4442.2	A992
1	p8	PL112X20	2'-0"	204.2	A572-GR-50
1	p18	PL78X7 1/16	1'-0 5/8"	20.4	A572-GR-50
2	p33	PL58X7 1/16	1'-0 5/8"	28.8	A572-GR-50
2	p387	PL318X8 1/2	1'-1 1/2"	12.3	44W
2	p421	PL172X8 1/2	0'-8 1/2"	30.8	44W
1	p502	PL318X7 3/4	0'-8 1/2"	3.5	44W
1	p531	PL178X1 1/2	0'-8 1/2"	2.3	44W
1	p558	PL318X7 1/2	0'-4 1/2"	3.4	44W
1	p559	PL178X7 1/2	0'-4 1/2"	2.4	44W
38	p782	STUD-1/2x3M	0'-3"	8	44W
1	p880	PL58X11 15/16	1'-0 5/8"	45.2	44W
1	p949	PL172X7 1/16	1'-0 5/8"	11.8	A572-GR-50
2	p1210	PL58X8 3/4	1'-4"	43.1	44W
1	p1232	PL316X8 1/2	1'-7 1/2"	6.8	44W
1	p1239	PL78X12 5/8	1'-4 3/4"	36.7	A572-GR-50
1	p1275	PL188X8 1/2	1'-7 1/2"	4.5	44W
1	p1279	PL78X12 5/8	1'-4 3/4"	36.8	A572-GR-50
1	p1280	PL78X12 5/8	1'-4 3/4"	32.8	A572-GR-50
1	p1281	PL78X12 5/8	1'-4 3/4"	32.8	A572-GR-50
2	p1282	PL78X8 1/2	1'-1 1/2"	7.3	44W
1	p1283	PL58X13 13/16	1'-9 5/16"	40.8	44W
1	p1299	PL316X8 7/8	1'-7 1/2"	7.2	44W
1	p1505	PL58X8 3/4	2'-0"	28.8	44W
2	p1535	PL34X8 1/2	2'-1"	90.4	44W
2	p1545	PL78X12 5/8	1'-5"	73.7	A572-GR-50
1	p1555	PL172X12 5/8	1'-4 3/4"	18.8	A572-GR-50
2	p1583	PL78X8 7/8	2'-0 3/8"	78.7	A572-GR-50
1	p1588	PL188X8 7/8	1'-7 1/2"	4.8	44W
1	p1603	PL58X13 13/16	1'-9 5/16"	46.7	44W
2	p1611	PL316X8 1/2	1'-4 5/8"	52.8	A572-GR-50
2	p1834	PL188X8 1/2	1'-1 1/2"	8.2	44W
2	p1895	PL178X8 1/2	0'-7 1/2"	3.2	44W
2	p1931	PL318X8	0'-7 1/2"	4.8	44W
2	p1951	PL58X8 1/2	1'-5 1/4"	46.1	A572-GR-50
1	p1991	PL58X13 13/16	1'-9 5/16"	47.9	44W
1	p2007	PL58X13 13/16	1'-4"	34.1	44W
2	p2014	PL316X7 1/16	1'-0 5/8"	34.3	44W
1	p2021	PL58X8 3/4	2'-5"	32.3	44W
1	p2508	PL78X12 5/8	1'-4 3/4"	32.8	A572-GR-50



NOTE:-  
 (1) REF. DWG NO. AB1, E13 & E14  
 (2) HOLE: 15/16 O.U.N.O.

REV	DESCRIPTION	PK	DATE
Δ	REVISED AS COMMENTS	PK 011008	
Δ	FABRICATION	PK 122807	
Δ	DESCRIPTION	BY DATE	

CUSTOMER

PROJECT: NE MARK LIBERTY INTERNATIONAL AIRPORT  
 SUBJECT: COLUMN DETAIL

DRAWN BY: \_\_\_\_\_ CHECKED BY: DATE: 01.10.08  
 P.K. / D.N.  
 CONTRACT # 1183 DRAWING # 505 ISSUE 1