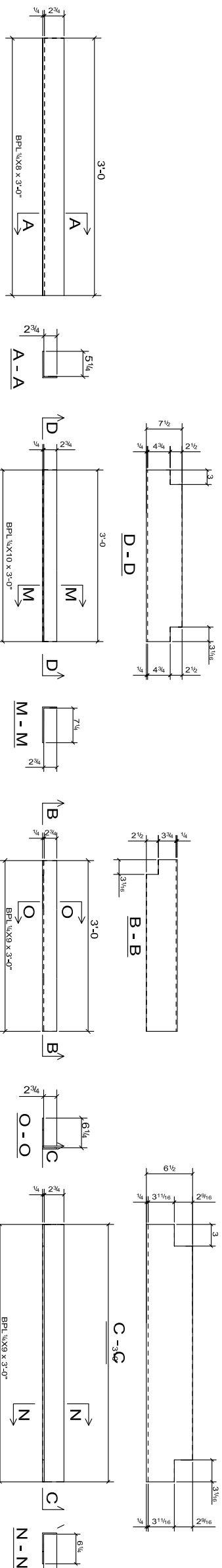


BILL OF MATERIALS

NO	PCS	DESCRIPTION	MARK	LENGTH	LENGTH (FORM)	UNIT	WEIGHT	WEIGHT PER PIECE	REMARKS
3	3	79M1	3-0"			83			
3	1	79M2	3-0"			69			
2	2	79M3	3-0"			45			
1	1	79M4	3-0"			25			
1	1	79M5	3-11"			20			
1	1	79M6	3-0"			3			
1	1	79M7	2-11 3/4"			15			
1	1	79M8	2-11 3/4"			3			
1	1	79M9	4-0"			3			
1	1	79M10	4-0"			3			
1	1	79M11	4-0"			3			
1	1	79M12	3-0 3/4"			2			
1	1	79M13	3-6 1/4"			23			
1	1	79M14	3-5 1/4"			29			
1	1	79M15	3-4 3/4"			19			
2	2	79M16	4-8"			46			

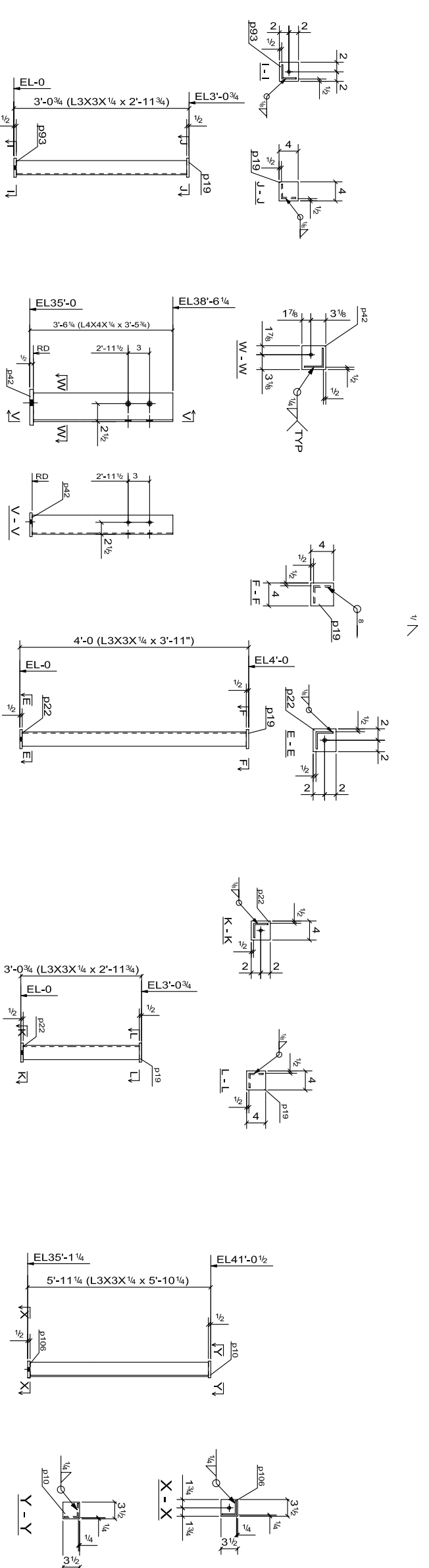


3 BENT PLATES 75M1

ONE BENT PLATE 75M4

3 BENT PLATES 75M2

2 BENT PLATES 75M3



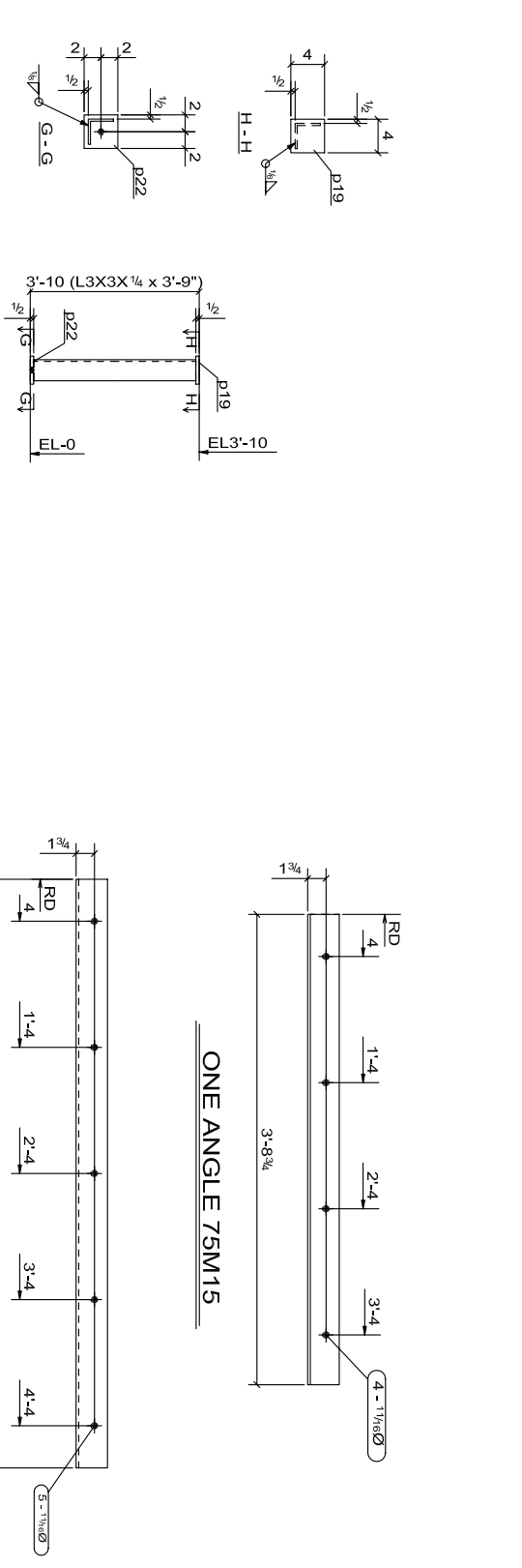
ONE POST ANGLE 75M7

ONE POST-ANGLE 75M13

ONE POST ANGLE 75M5

ONE POST ANGLE 75M8

ONE POST ANGLE 75M14



ONE POST ANGLE 75M6

ONE ANGLE 75M15

2 ANGLES 75M16

NOTE:  
 1. MARK 75M1, 75M2, 75M3&75M4 ARE ONLY FOR TOWER STAIR(E)S  
 2. REST MARKS ARE WITH OTHER STAIRS DRG.

APPROVAL STAMPS:

COMMENTS:

REVISIONS:

NO.	DATE	DESCRIPTION

ISSUED FOR: APPROVAL, PURCHASING, FABRICATION, etc.

DATE: 08/22/2009

PROJECT: Biodiesel Process Building

LOCATION: 862712005

CONTRACTOR: 898 ST. NO. 75