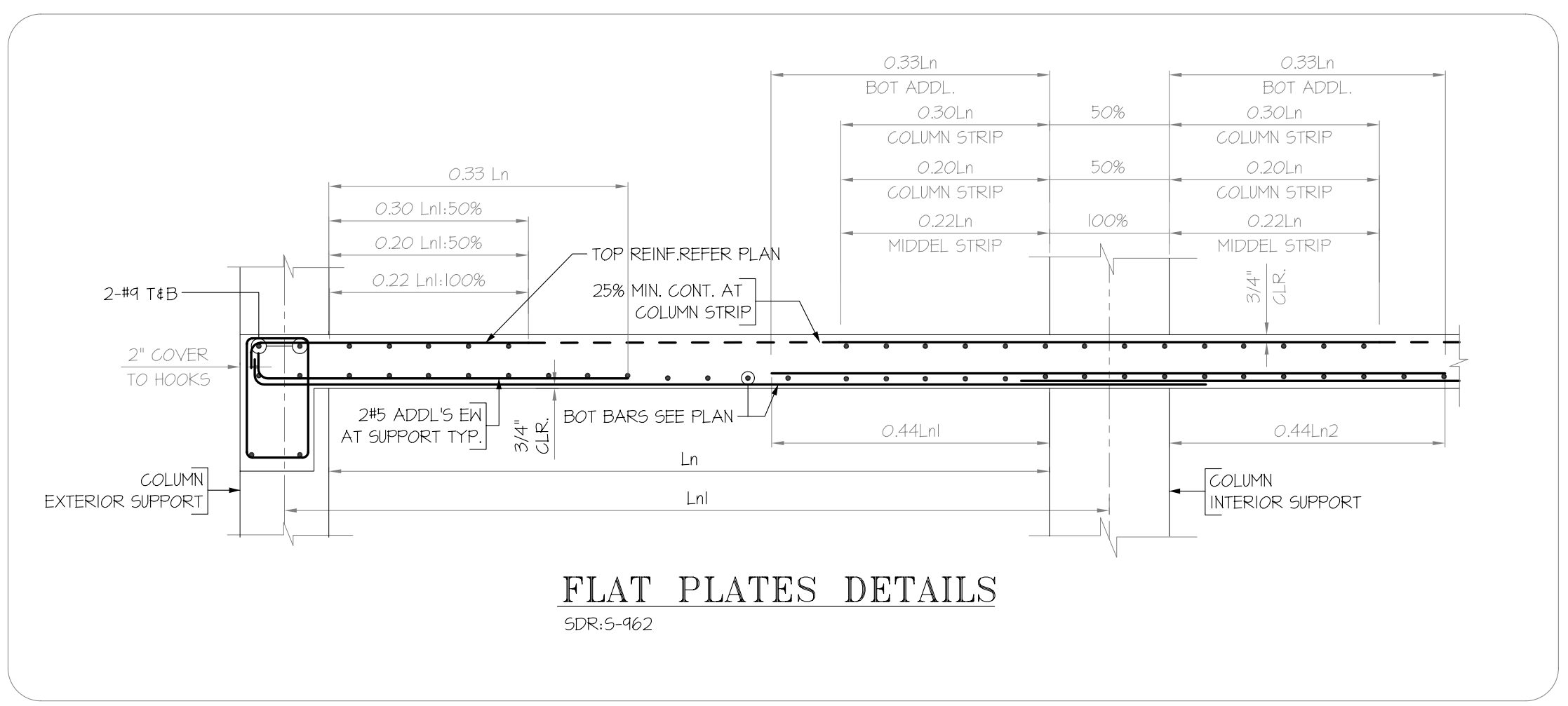
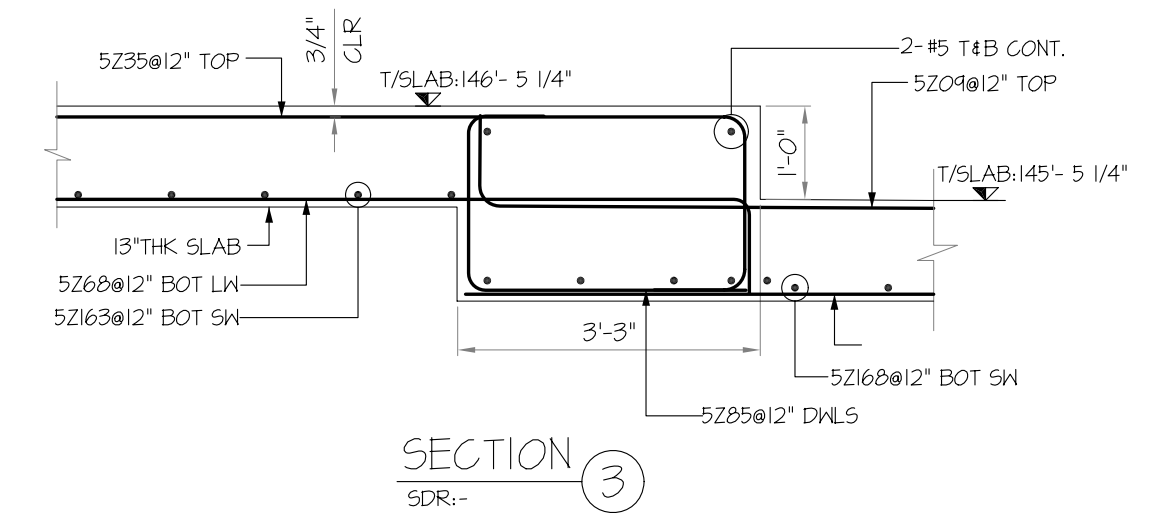
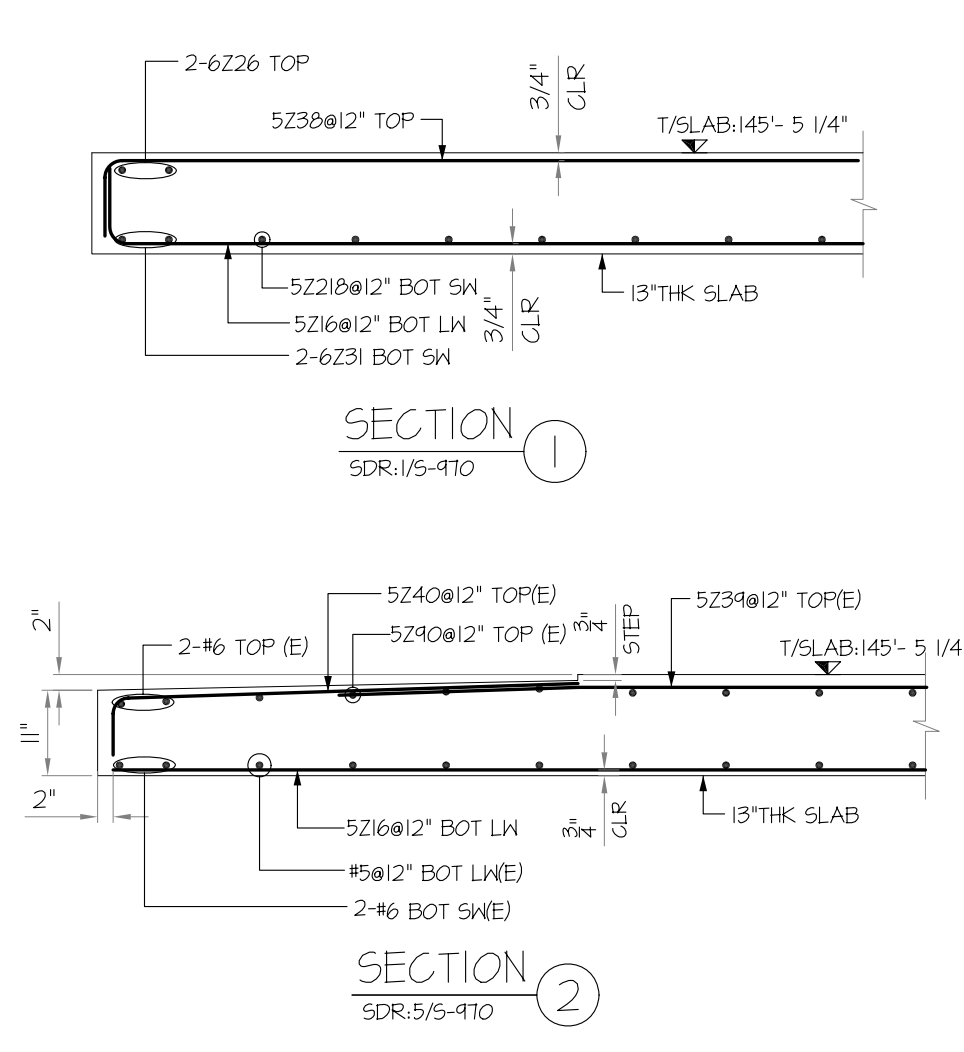


13TH FLOOR FRAMING PLAN
 (SHOWING 13" THK SLAB BOT (X-DIR) REINFORCEMENT DETAILS)
 SDR:5-130, 5-134

A/E TO VERIFY
 FABRICATOR NOTE: WE USED 40'-0" STOCK BAR IN SLAB TO MAINTAIN LAP LOCATION AT STRESS LINE/SUPPORT



6000 PSI		TABLE 1.C-CLASS B	
REF SHT.NOS-S-965			
BAR SIZE	TOP	OTHER	
#4	26"	20"	
#5	32"	24"	
#6	39"	30"	
#8	78"	60"	
#9	95"	73"	
#10	112"	86"	
#11	129"	99"	

3		
2		
1		
0	12/19/2015	FOR APPROVAL
	DATE	SENT FOR

SIMSONA CORPORATION
 2275 Research Boulevard, Suite 500, Rockville, MD 20850
 Phone: 301-408-8553 Fax: 301-260-0234

STRUCTURE	500 WALNUT STREET	CONTRACT NUMBER	
LOCATION	500 WALNUT STREET PHILADELPHIA, PA 19106	DRAWING COVERS	13TH FLOOR SLAB (BOT LONG WAY BAR REINFORCEMENT DETAILS)
ARCHITECT	CECIL BAKER + PARTNERS	DRAWING NUMBER	R-161
ENGINEER	WSP GROUP		
CUSTOMER			
MADE BY	ST	DATE	12/19/2015
		REV#	0
	12/19/2015	DATE	FOR APPROVAL
		DESCRIPTION	

ASTM A775 GRADE 60 EPOXY COATED
 ASTM A615 GRADE 60 UNCOATED
 REINFORCING STEEL PLACING DRAWING ONLY
 USE IN CONJUNCTION WITH CONTRACT DRAWINGS
 AND SPECIFICATIONS. ELEVATIONS & DIMENSIONS
 SHOWN ON THIS DRAWING ARE FOR DETAILING
 PURPOSES ONLY AND ARE NOT TO BE USED FOR
 CONSTRUCTION UNLESS VERIFIED BY THE
 ENGINEER OR CONTRACTOR

USE IN CONJUNCTION WITH THE STRUCTURAL DRAWINGS: S-130 & S-139
 FOR SECTIONS SEE STRUCTURAL DRAWINGS: S-950, S-962, S-963, S-967 & S-970

BULLETIN #5 - DATED: 09-10-15
 THIS PLACING DRAWING WAS PREPARED FROM STRUCTURAL DOCUMENTS DATED: 09-04-15

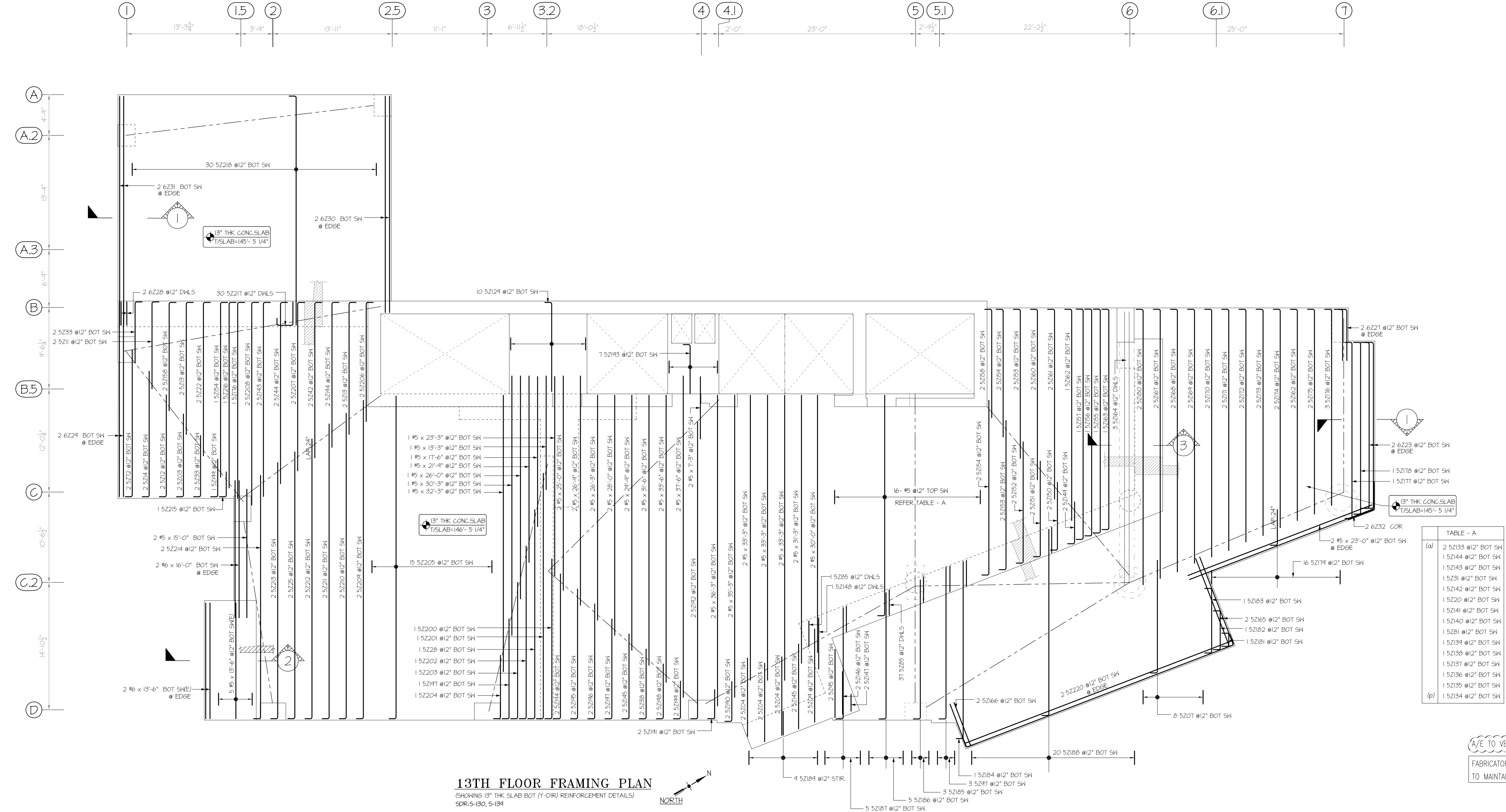
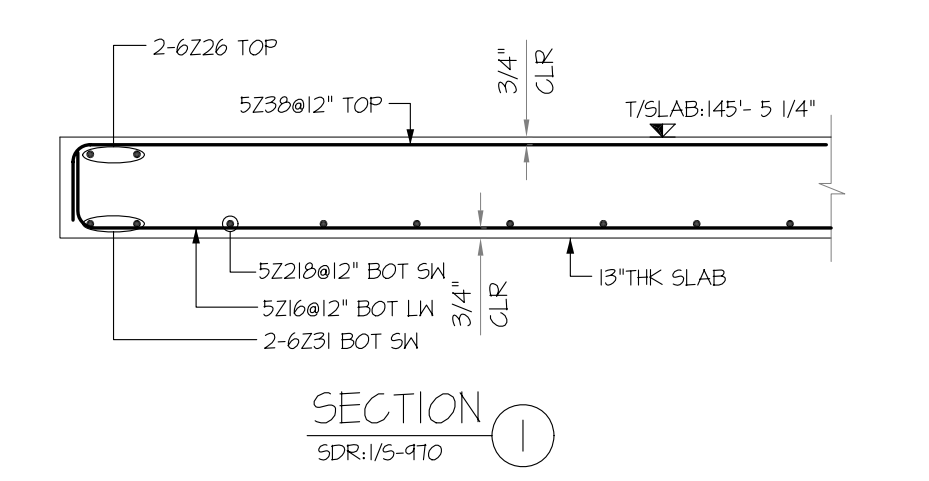


TABLE - A	
(a)	2-52133 @12\"/>

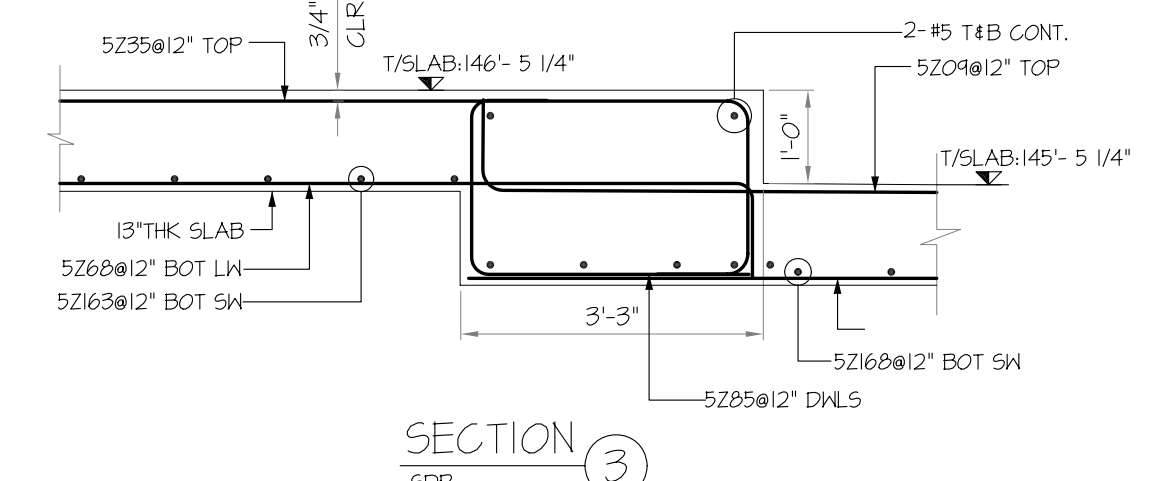
13TH FLOOR FRAMING PLAN
 (SHOWING 13\"/>

N/E TO VERIFY
 FABRICATOR NOTE: WE USED 40\"/>

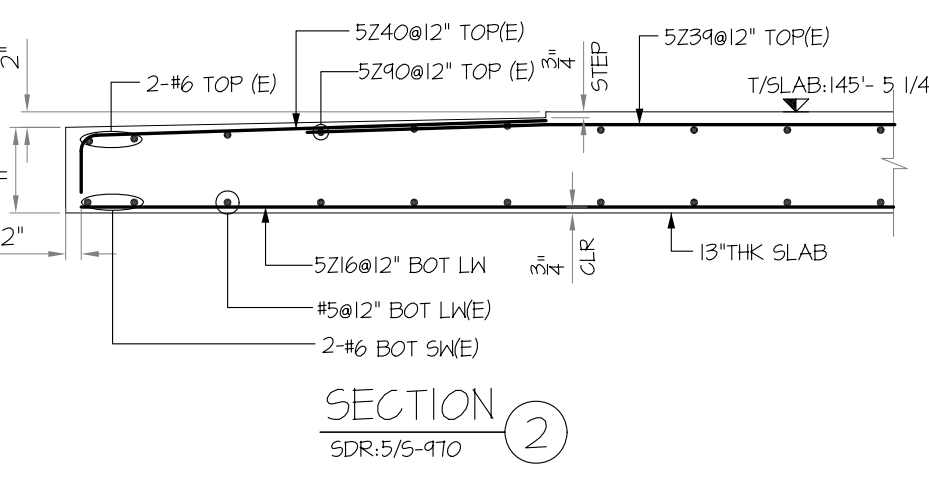
6000 PSI TABLE 1.C-CLASS B REF SHT.NO.S-965		
BAR SIZE	TOP	OTHER
#4	26"	20"
#5	32"	24"
#6	39"	30"
#8	78"	60"
#9	95"	73"
#10	112"	86"
#11	129"	99"



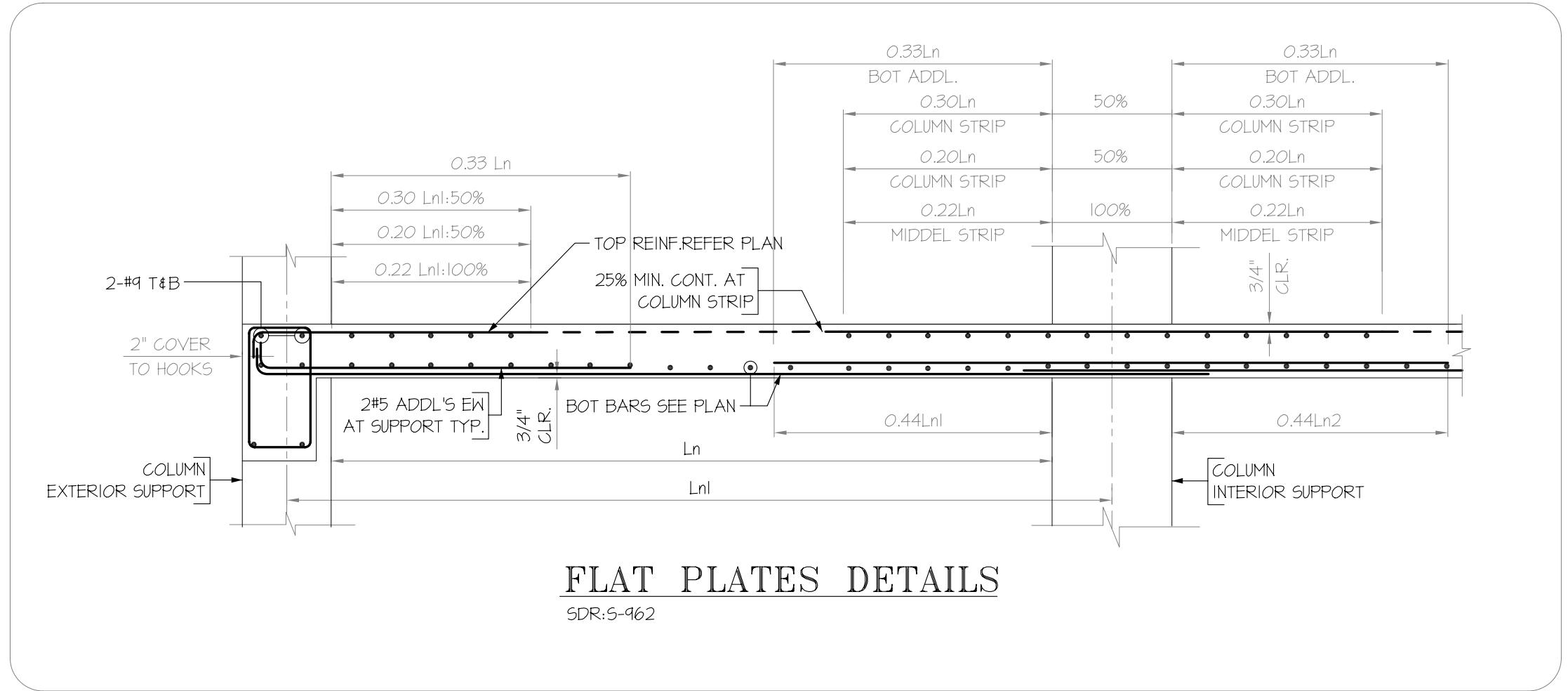
SECTION 1
SDR:1/5-110



SECTION 3
SDR:-



SECTION 2
SDR:5/5-110



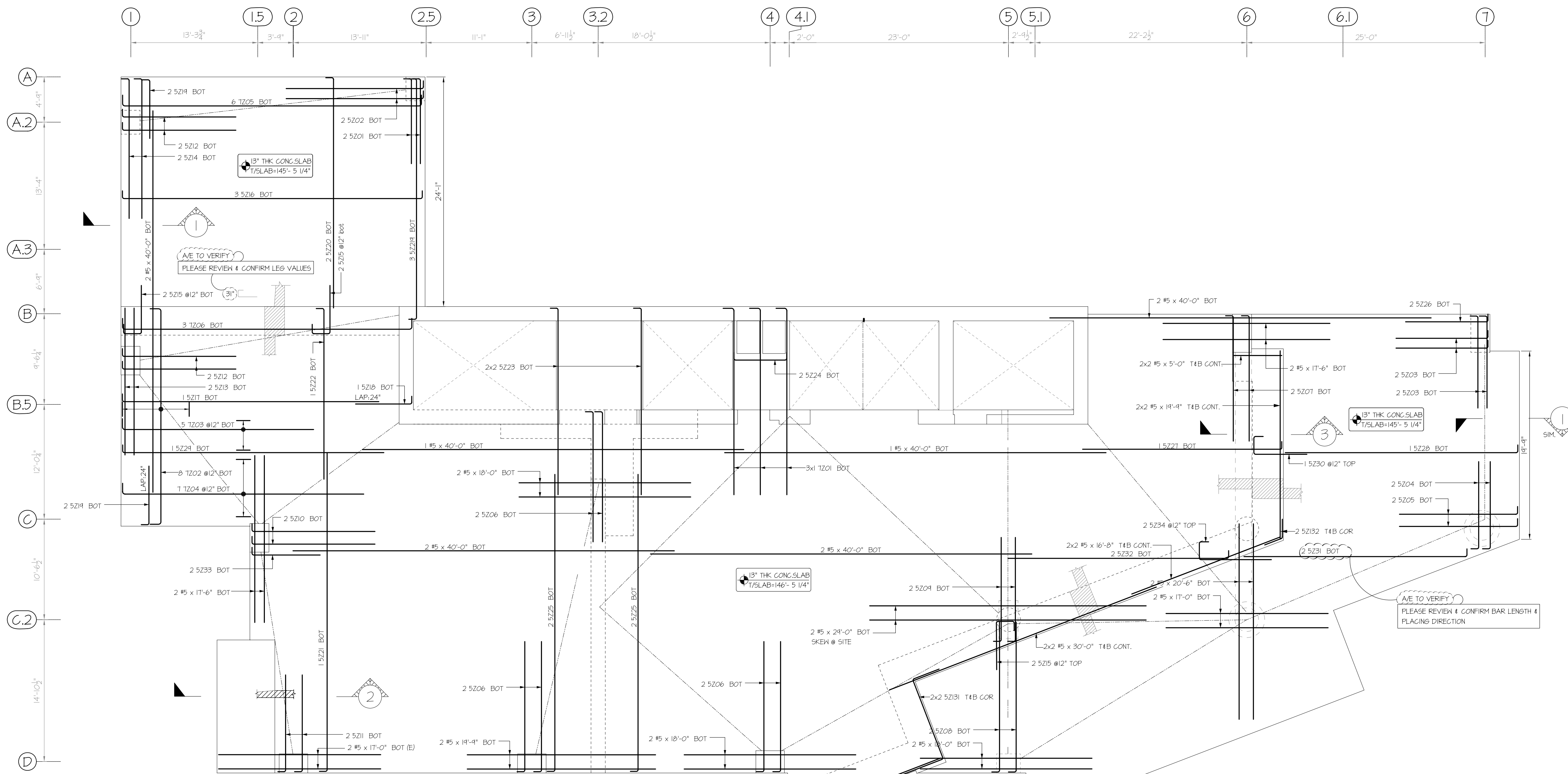
FLAT PLATES DETAILS
SDR:5-162

USE IN CONJUNCTION WITH THE STRUCTURAL DRAWING: S-130 & S-139
 FOR SECTIONS SEE STRUCTURAL DRAWINGS: S-950, S-962, S-963, S-967 & S-970

BULLETIN #5 - DATED: 09-10-15
 THIS PLACING DRAWING WAS PREPARED FROM STRUCTURAL DOCUMENTS DATED: 09-04-15

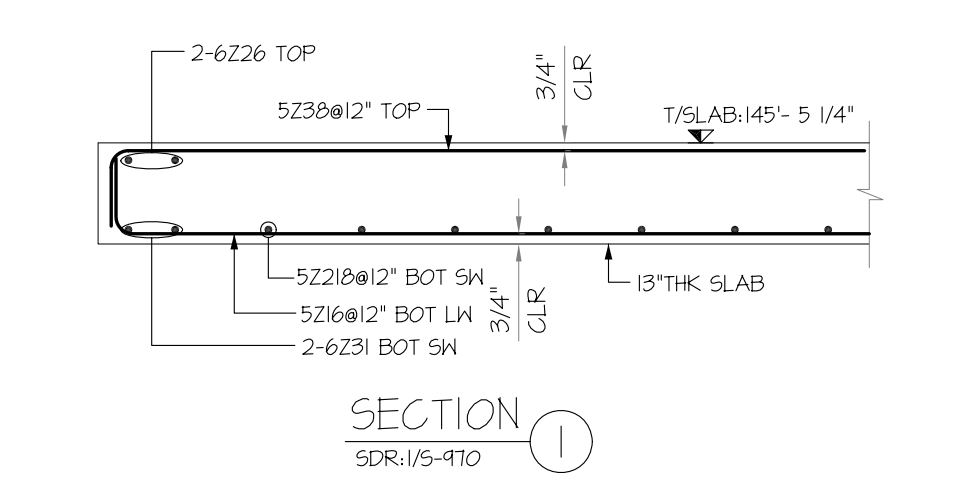
ASTM A775 GRADE 60 EPOXY COATED			
ASTM A615 GRADE 60 UNCOATED			
REINFORCING STEEL PLACING DRAWING ONLY USE IN CONJUNCTION WITH CONTRACT DRAWINGS AND SPECIFICATIONS. ELEVATIONS & DIMENSIONS SHOWN ON THIS DRAWING ARE FOR DETAILING PURPOSES ONLY AND ARE NOT TO BE USED FOR CONSTRUCTION UNLESS VERIFIED BY THE ENGINEER OR CONTRACTOR			
0	12/19/2015	FOR APPROVAL	
REV#	DATE	DESCRIPTION	

3			
2			
1			
0	12/19/2015	FOR APPROVAL	
	DATE	SENT FOR	
SIMSONA CORPORATION			
2275 Research Boulevard, Suite 500, Rockville, MD 20850 Phone: 301-408-8553 Fax: 301-260-0234			
STRUCTURE	500 WALNUT STREET		
LOCATION	500 WALNUT STREET PHILADELPHIA, PA 19106		
ARCHITECT	CECIL BAKER + PARTNERS		
ENGINEER	WSP GROUP		
CUSTOMER	-		
MADE BY	ST	DATE	12/19/2015
			CONTRACT NUMBER
			DRAWING NUMBER
			R-162

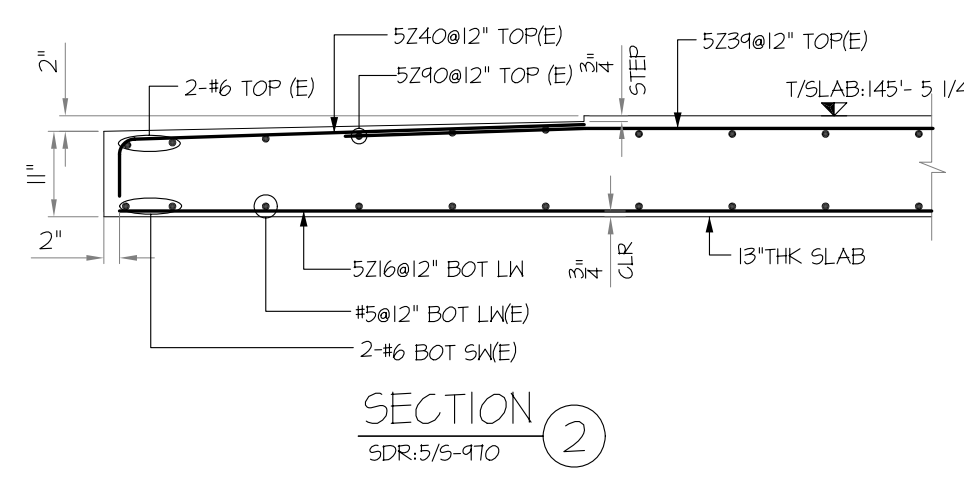


13TH FLOOR FRAMING PLAN
 (SHOWING 13" THK SLAB BOT ADDLS REINFORCEMENT DETAILS)
 SDR:5-130 & 5-131

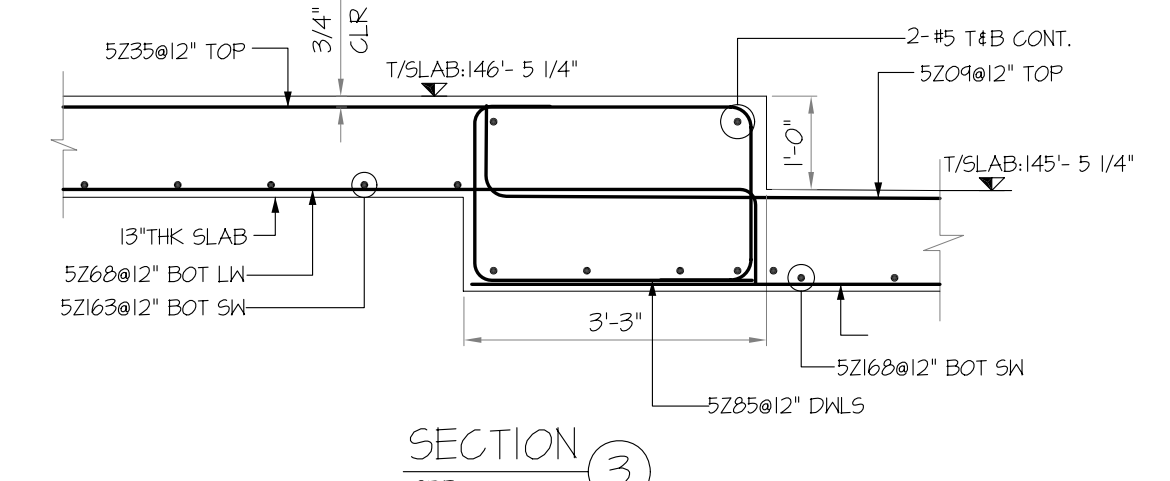
A/E TO VERIFY
 FABRICATOR NOTE: WE USED 40"-0" STOCK BAR IN SLAB TO MAINTAIN LAP LOCATION AT STRESS LINE/SUPPORT



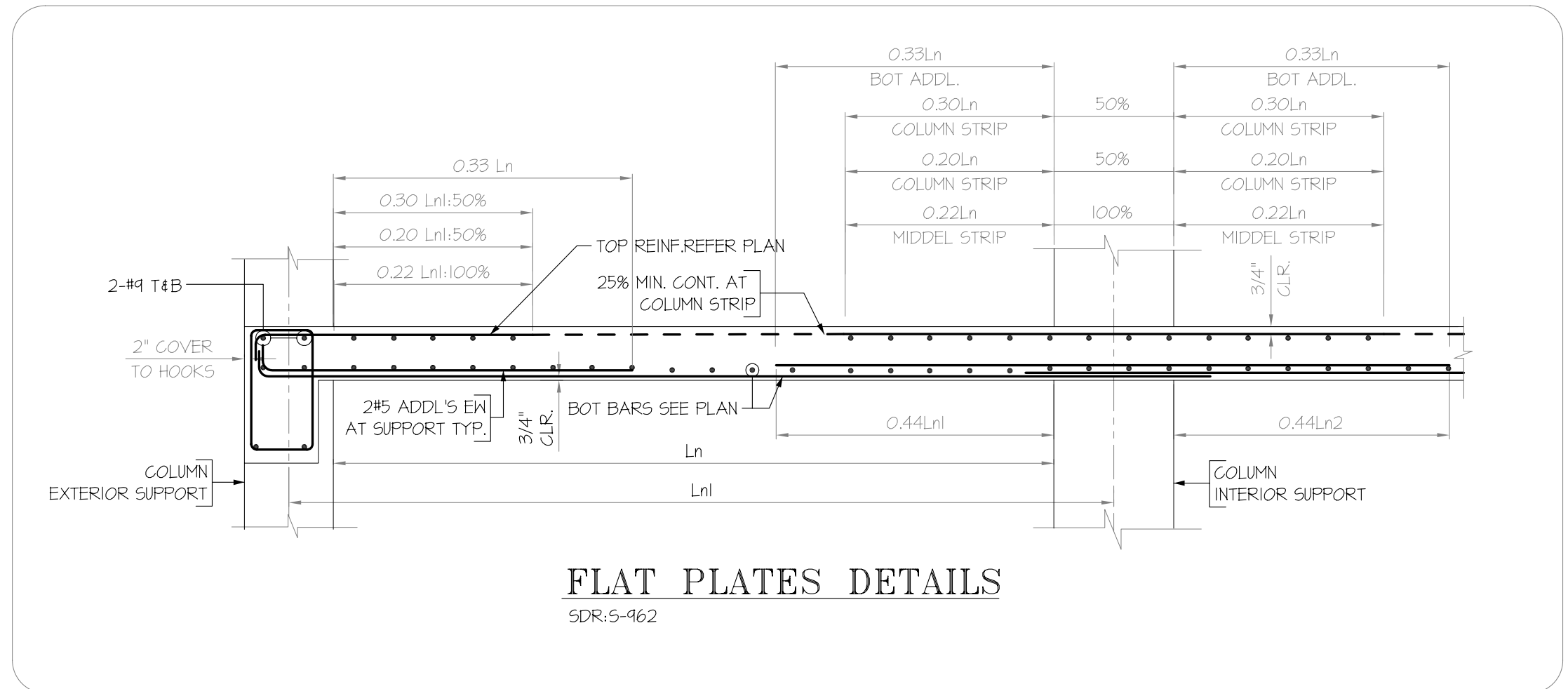
SECTION 1
 SDR:1/5-470



SECTION 2
 SDR:5/5-410



SECTION 3
 SDR:-



FLAT PLATES DETAILS
 SDR:5-962

6000 PSI TABLE 1.C--CLASS B REF SHT.NO:S-965		
BAR SIZE	TOP	OTHER
#4	26"	20"
#5	32"	24"
#6	39"	30"
#8	78"	60"
#9	95"	73"
#10	112"	86"
#11	129"	99"

3		
2		
1		
0	12/19/2015	FOR APPROVAL
	DATE	SENT FOR

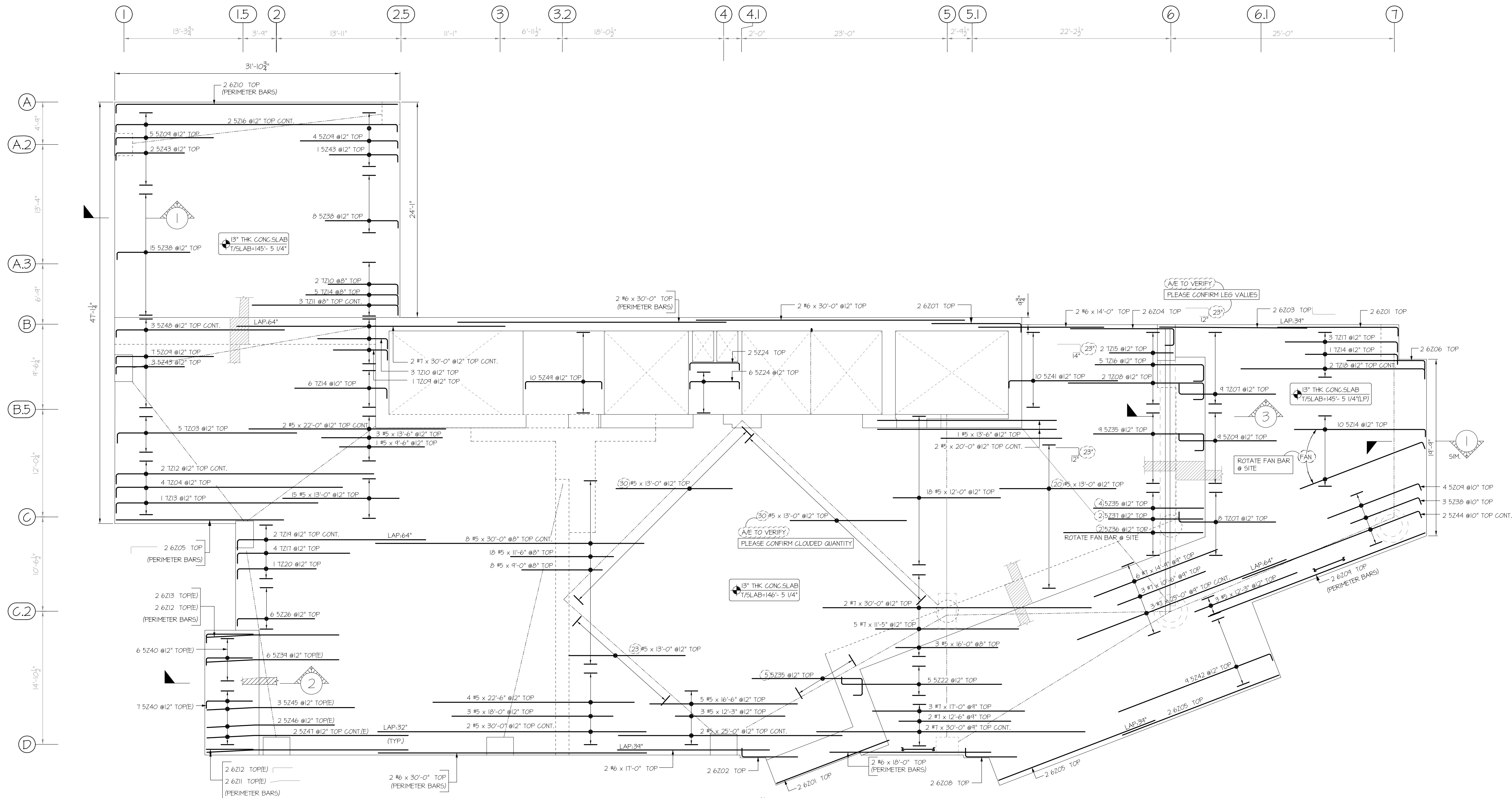
SIMSONA CORPORATION
 2275 Research Boulevard, Suite 500, Rockville, MD 20850
 Phone: 301-408-8553 Fax: 301-260-0234

STRUCTURE	500 WALNUT STREET
LOCATION	500 WALNUT STREET PHILADELPHIA, PA 19106
ARCHITECT	CECIL BAKER + PARTNERS
ENGINEER	WSP GROUP
CUSTOMER	
MADE BY	ST _____ DATE 12/19/2015
DRAWING COVERS	13TH FLOOR SLAB (BOT ADDITIONAL REINFORCEMENT DETAILS)
DRAWING NUMBER	R-163

ASTM A775 GRADE 60 EPOXY COATED			
ASTM A615 GRADE 60 UNCOATED			
REINFORCING STEEL PLACING DRAWING ONLY USE IN CONJUNCTION WITH CONTRACT DRAWINGS AND SPECIFICATIONS. ELEVATIONS & DIMENSIONS SHOWN ON THIS DRAWING ARE FOR DETAILING PURPOSES ONLY AND ARE NOT TO BE USED FOR CONSTRUCTION UNLESS VERIFIED BY THE ENGINEER OR CONTRACTOR			
REV#	DATE	DESCRIPTION	
0	12/19/2015	FOR APPROVAL	

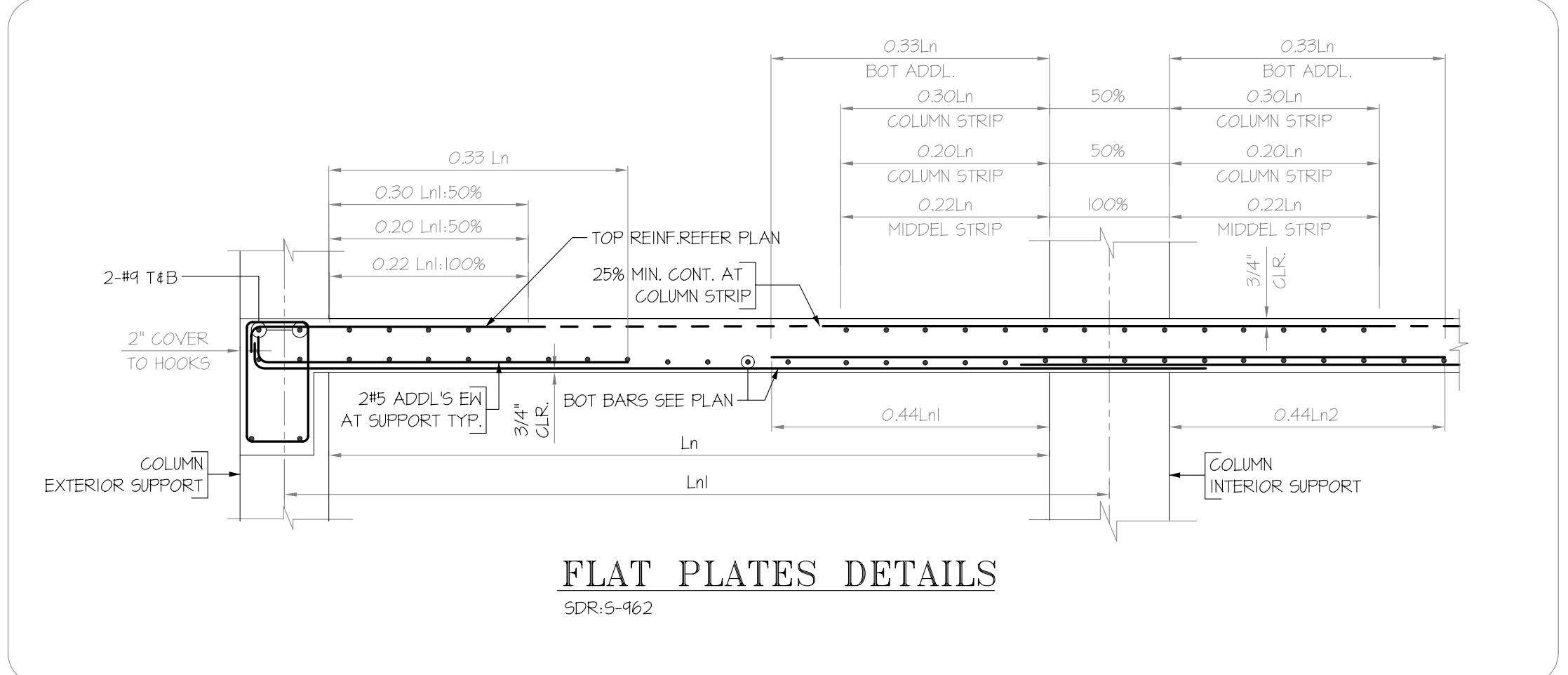
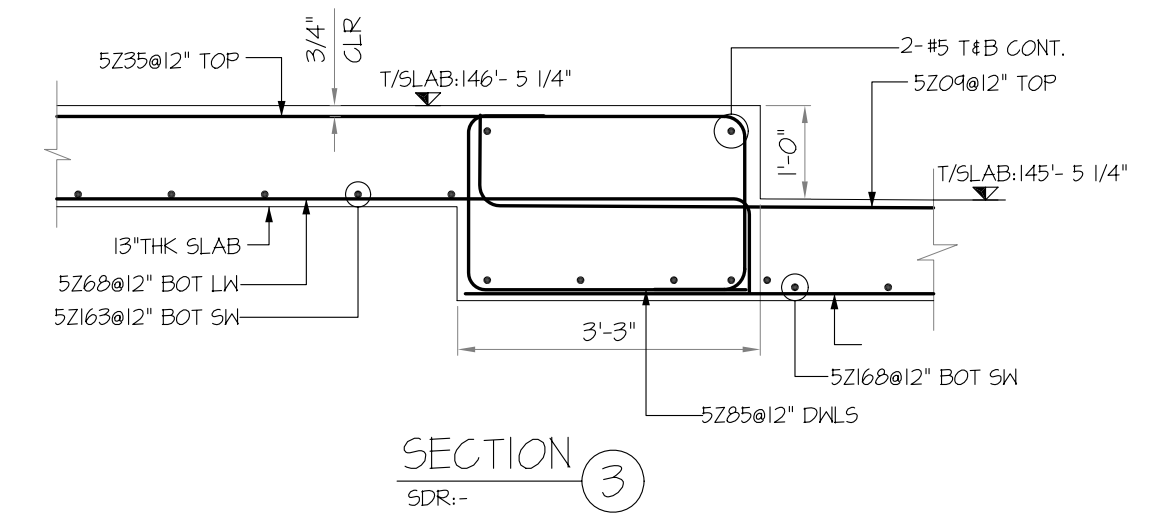
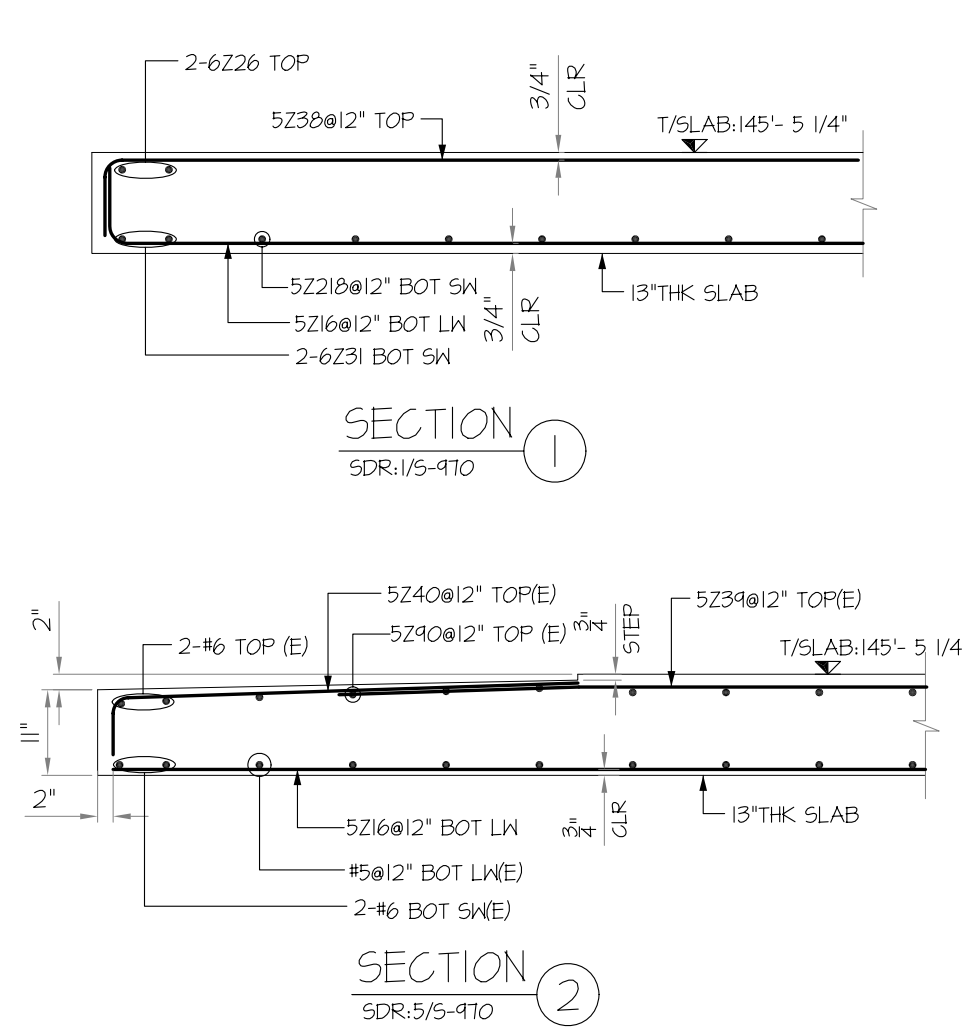
USE IN CONJUNCTION WITH THE STRUCTURAL DRAWINGS: S-130 & S-139
 FOR SECTIONS SEE STRUCTURAL DRAWINGS: S-950, S-962, S-963, S-967 & S-970

BULLETIN #5 - DATED: 09-10-15
 THIS PLACING DRAWING WAS PREPARED FROM STRUCTURAL DOCUMENTS DATED: 09-04-15



13TH FLOOR FRAMING PLAN
 (SHOWING 13" THK SLAB TOP (X-DIR) REINFORCEMENT DETAILS)
 SDR:5-130, 5-134

(A/E TO VERIFY)
 FABRICATOR NOTE: WE USED 40"-0" STOCK BAR IN SLAB TO MAINTAIN LAP LOCATION AT STRESS LINE/SUPPORT



6000 PSI TABLE 1.C-CLASS B REF SHT. NO. S-965		
BAR SIZE	TOP	OTHER
#4	26"	20"
#5	32"	24"
#6	39"	30"
#8	78"	60"
#9	95"	73"
#10	112"	86"
#11	129"	99"

USE IN CONJUNCTION WITH THE STRUCTURAL DRAWINGS: S-130 & S-139
 FOR SECTIONS SEE STRUCTURAL DRAWINGS: S-950, S-962, S-963, S-967 & S-970

BULLETIN #5 - DATED: 09-10-15
 THIS PLACING DRAWING WAS PREPARED FROM STRUCTURAL DOCUMENTS DATED: 09-04-15

ASTM A775 GRADE 60 EPOXY COATED			
ASTM A615 GRADE 60 UNCOATED			
REINFORCING STEEL PLACING DRAWING ONLY USE IN CONJUNCTION WITH CONTRACT DRAWINGS AND SPECIFICATIONS. ELEVATIONS & DIMENSIONS SHOWN ON THIS DRAWING ARE FOR DETAILING PURPOSES ONLY AND ARE NOT TO BE USED FOR CONSTRUCTION UNLESS VERIFIED BY THE ENGINEER OR CONTRACTOR			
0	12/19/2015	FOR APPROVAL	REV#
		DESCRIPTION	

3			
2			
1			
0	12/19/2015	FOR APPROVAL	SENT FOR
SIMSONA CORPORATION 2275 Research Boulevard, Suite 500, Rockville, MD 20850 Phone: 301-408-8553 Fax: 301-260-0234			
STRUCTURE: 500 WALNUT STREET			
LOCATION: 500 WALNUT STREET PHILADELPHIA, PA 19106			
ARCHITECT: CECIL BAKER + PARTNERS			
ENGINEER: WSP GROUP			
CUSTOMER:			
MADE BY: ST		DATE: 12/19/2015	
DRAWING COVERS: 13TH FLOOR SLAB (TOP LONG WAY BAR REINFORCEMENT DETAILS)		DRAWING NUMBER: R-164	

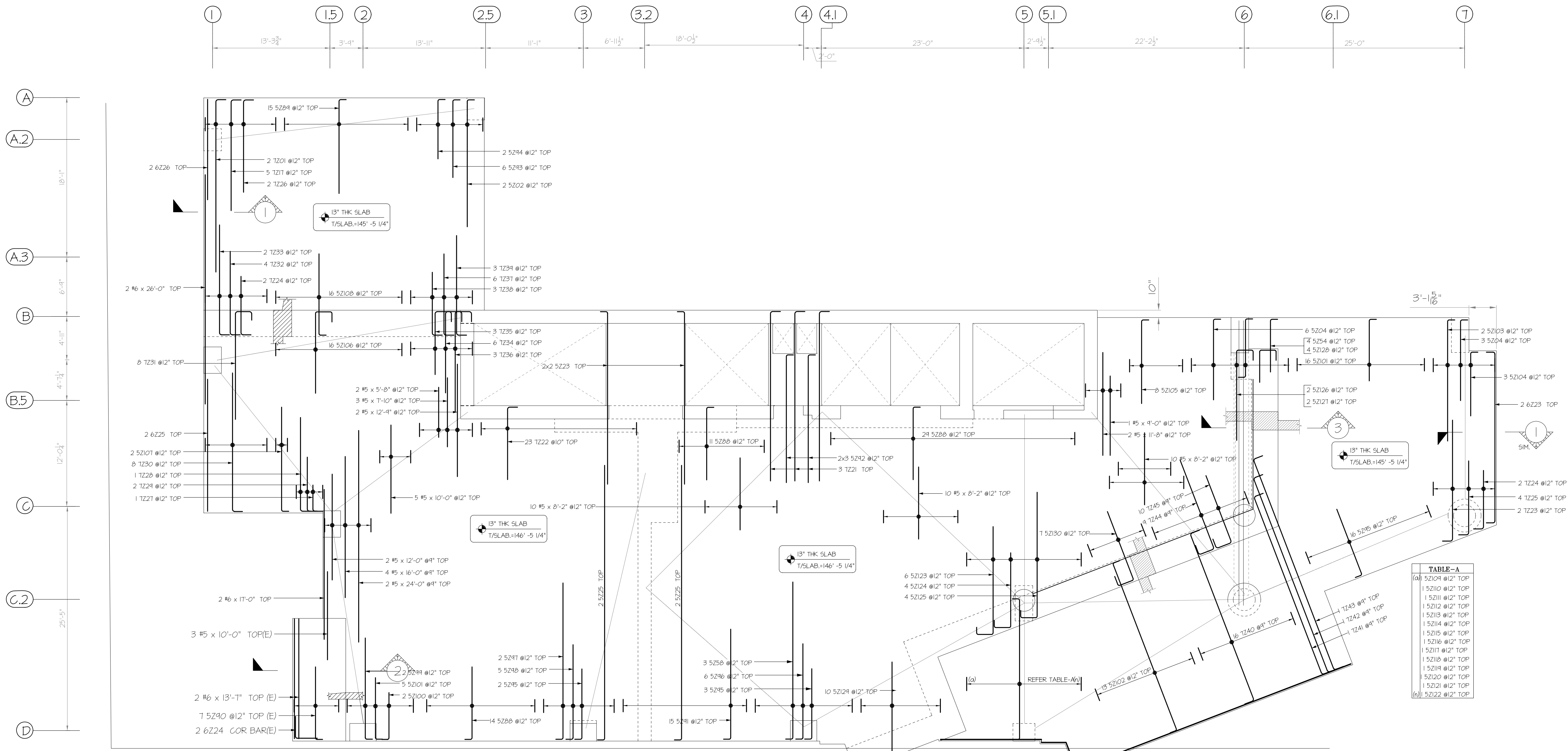


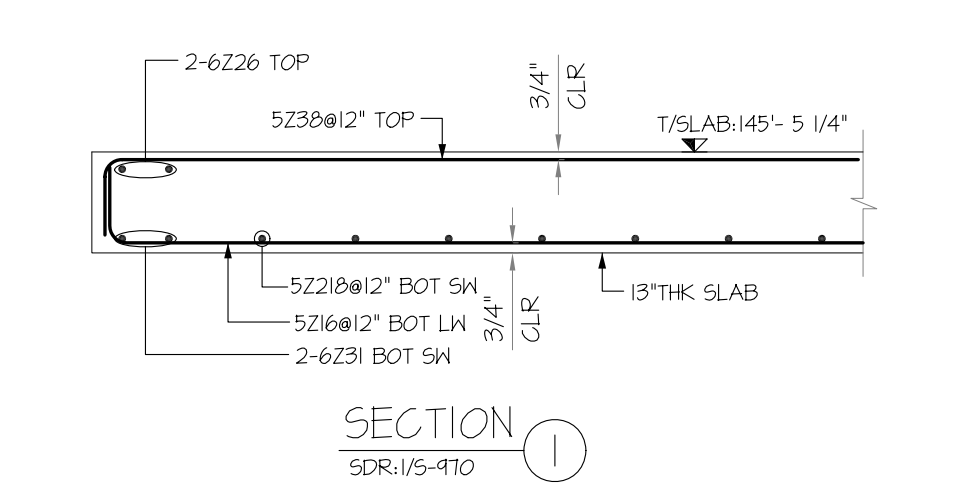
TABLE-A

(a) 52104 @12\"
1 52110 @12\"
1 52111 @12\"
1 52112 @12\"
1 52113 @12\"
1 52114 @12\"
1 52115 @12\"
1 52116 @12\"
1 52117 @12\"
1 52118 @12\"
1 52119 @12\"
1 52120 @12\"
1 52121 @12\"
(b) 1 52122 @12\"

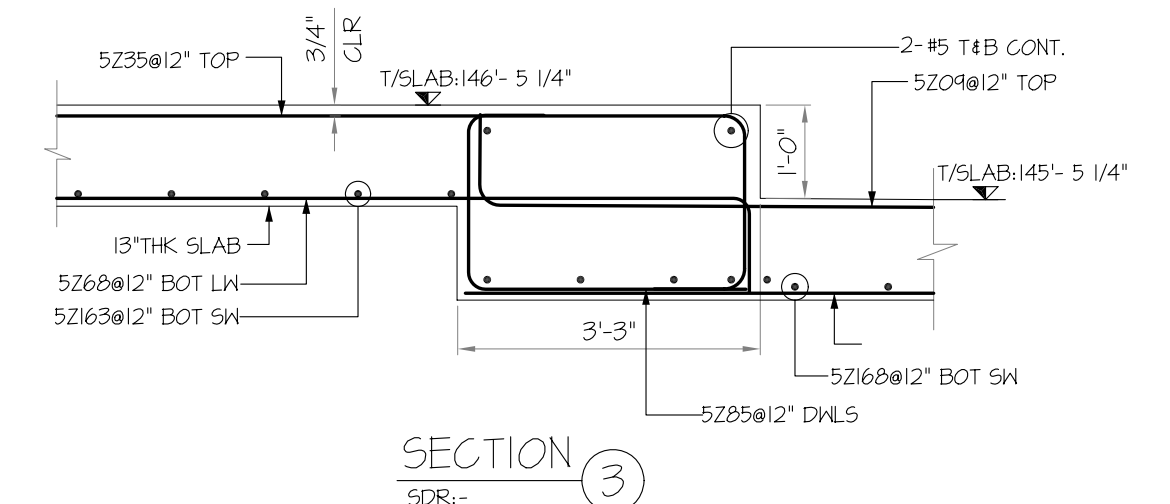
A/E TO VERIFY

FABRICATOR NOTE: WE USED 40\"-0\" STOCK BAR IN SLAB TO MAINTAIN LAP LOCATION AT STRESS LINE/SUPPORT

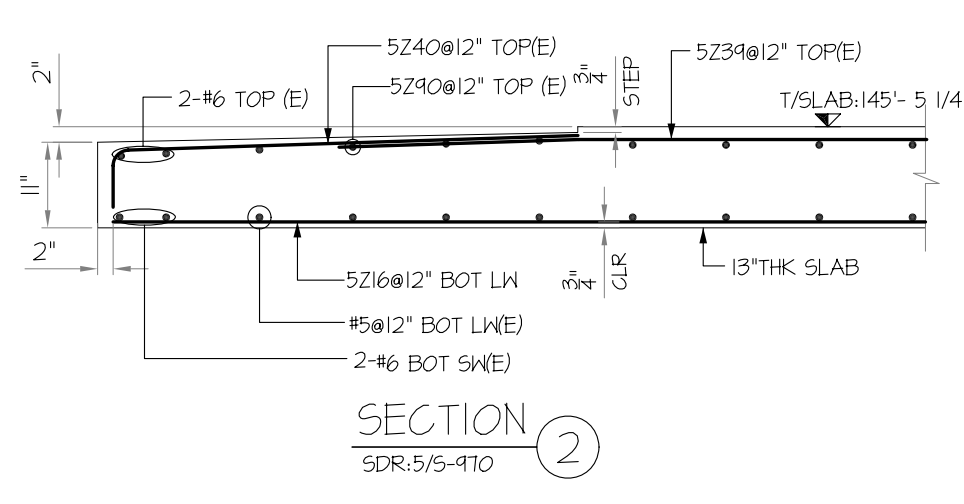
13TH FLOOR FRAMING PLAN
 (SHOWING 13TH THK SLAB TOP (Y-DIR) REINFORCEMENT DETAILS)
 SDR:5-130



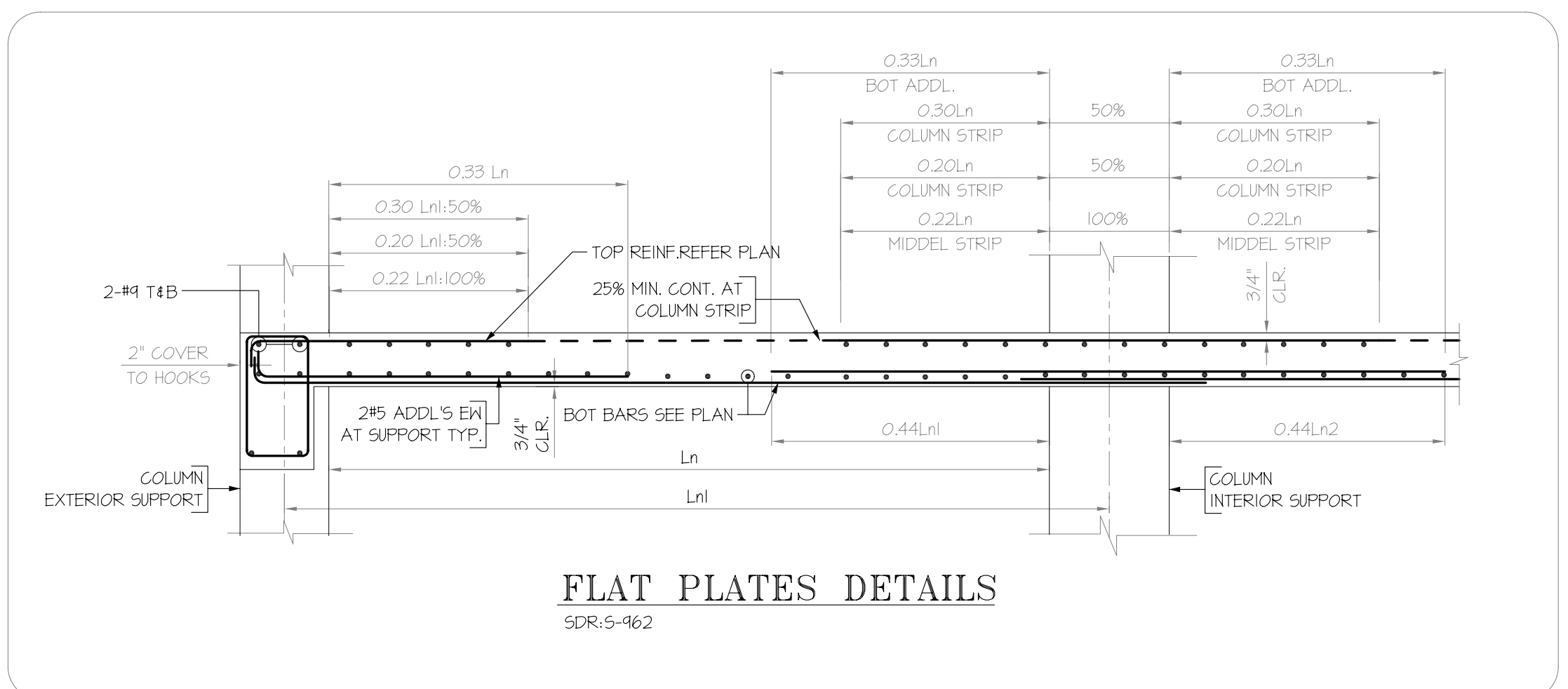
SECTION 1
 SDR:5/5-410



SECTION 3
 SDR:--



SECTION 2
 SDR:5/5-410



FLAT PLATES DETAILS
 SDR:5-462

6000 PSI TABLE 1.C-CLASS B REF SHT.NO:S-965		
BAR SIZE	TOP	OTHER
#4	26"	20"
#5	32"	24"
#6	39"	30"
#8	78"	60"
#9	95"	73"
#10	112"	86"
#11	129"	99"

3		
2		
1		
0	12/19/2015	FOR APPROVAL
	DATE	SENT FOR

SIMSONA CORPORATION
 2275 Research Boulevard, Suite 500, Rockville, MD 20850
 Phone: 301-408-8553 Fax: 301-260-0234

STRUCTURE	500 WALNUT STREET				
LOCATION	500 WALNUT STREET PHILADELPHIA, PA 19106				
ARCHITECT	CECIL BAKER + PARTNERS				
ENGINEER	WSP GROUP				
CUSTOMER	--				
MADE BY	ST	DATE	12/19/2015	CONTRACT NUMBER	
DRAWING COVERS		DRAWING NUMBER		R-165	
13TH FLOOR SLAB (TOP SHORT WAY BAR REINFORCEMENT DETAILS)					

ASTM A775 GRADE 60 EPOXY COATED					
ASTM A615 GRADE 60 UNCOATED					
REINFORCING STEEL PLACING DRAWING ONLY USE IN CONJUNCTION WITH CONTRACT DRAWINGS AND SPECIFICATIONS. ELEVATIONS & DIMENSIONS SHOWN ON THIS DRAWING ARE FOR DETAILING PURPOSES ONLY AND ARE NOT TO BE USED FOR CONSTRUCTION UNLESS VERIFIED BY THE ENGINEER OR CONTRACTOR					
0	12/19/2015	FOR APPROVAL			
REV#	DATE	DESCRIPTION			

USE IN CONJUNCTION WITH THE STRUCTURAL DRAWING: S-130 & S-139
 FOR SECTIONS SEE STRUCTURAL DRAWINGS: S-950, S-962, S-963, S-967 & S-970

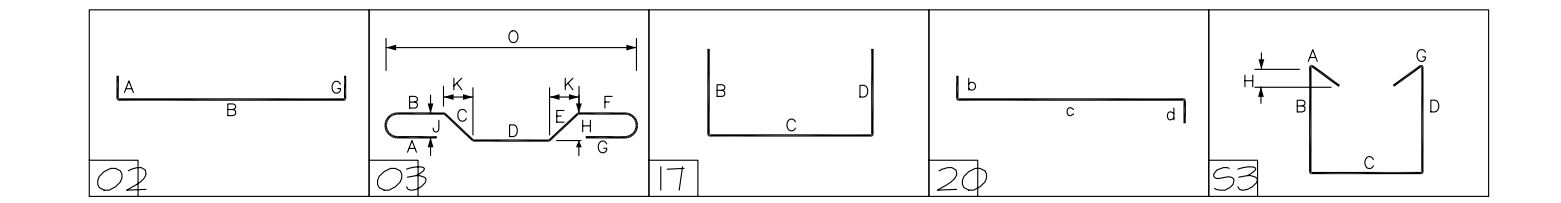
BULLETIN #5 - DATED: 09-10-15
 THIS PLACING DRAWING WAS PREPARED FROM STRUCTURAL DOCUMENTS DATED: 09-04-15

Table with 19 columns: Release Code, Bar Mark, Qty, Size, Total length, Type, and 13th Floor Slab Bending Details (A' through W'). It lists reinforcement bar specifications for various slab sections, including bar sizes, quantities, lengths, and bent-up details.

Table with 19 columns: Release Code, Bar Mark, Qty, Size, Total length, Type, and 13th Floor Slab Bending Details (A' through W'). This table continues the list of reinforcement bar specifications, detailing quantities, lengths, and bent-up details for additional slab sections.

Table with 19 columns: Release Code, Bar Mark, Qty, Size, Total length, Type, and 13th Floor Slab Bending Details (A' through W'). This table continues the list of reinforcement bar specifications, detailing quantities, lengths, and bent-up details for additional slab sections.

Table with 19 columns: Release Code, Bar Mark, Qty, Size, Total length, Type, and 13th Floor Slab Bending Details (A' through W'). This table continues the list of reinforcement bar specifications, detailing quantities, lengths, and bent-up details for additional slab sections.



6000 PSI
TABLE 1.C--CLASS B
REF SHT.NO.S-965

BAR SIZE	TOP	OTHER
#4	26"	20"
#5	32"	24"
#6	39"	30"
#8	78"	60"
#9	95"	73"
#10	112"	86"
#11	129"	99"

USE IN CONJUNCTION WITH THE STRUCTURAL DRAWING: S-130 & S-139
FOR SECTIONS SEE STRUCTURAL DRAWINGS: S-950, S-962, S-963, S-967 & S-970

BULLETIN #5 - DATED: 09-10-15
THIS PLACING DRAWING WAS PREPARED FROM STRUCTURAL DOCUMENTS DATED: 09-04-15

FOR VERIFICATION

FABRICATOR NOTE: WE USED 40'-0" STOCK BAR IN SLAB
TO MAINTAIN LAP LOCATION AT STRESS LINE/SUPPORT

ASTM A775 GRADE 60 EPOXY COATED	
ASTM A615 GRADE 60 UNCOATED	
REINFORCING STEEL PLACING DRAWING ONLY USE IN CONJUNCTION WITH CONTRACT DRAWINGS AND SPECIFICATIONS. ELEVATIONS & DIMENSIONS SHOWN ON THIS DRAWING ARE FOR DETAILING PURPOSES ONLY AND ARE NOT TO BE USED FOR CONSTRUCTION UNLESS VERIFIED BY THE ENGINEER OR CONTRACTOR	
0	12/19/2015 FOR APPROVAL
REV#	DATE DESCRIPTION

STRUCTURE 500 WALNUT STREET	
LOCATION 500 WALNUT STREET PHILADELPHIA, PA 19106	
ARCHITECT CECIL BAKER + PARTNERS	
ENGINEER WSP GROUP	
CUSTOMER	
MADE BY	DATE 12/19/2015
DRAWING COVERS 13TH FLOOR SLAB	
DRAWING NUMBER SCHEDULE	
CONTRACT NUMBER R-166	