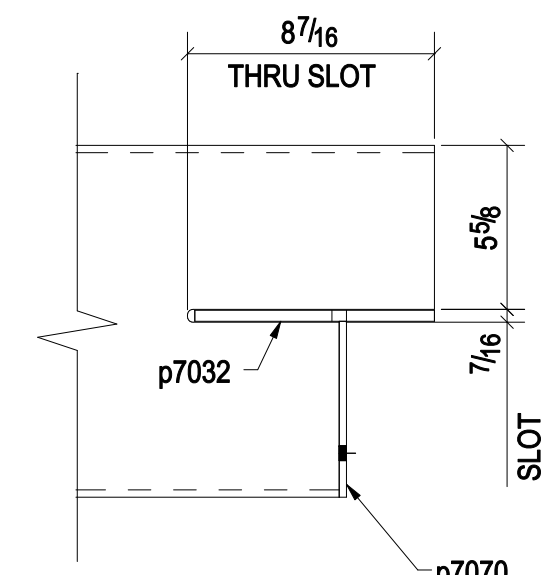
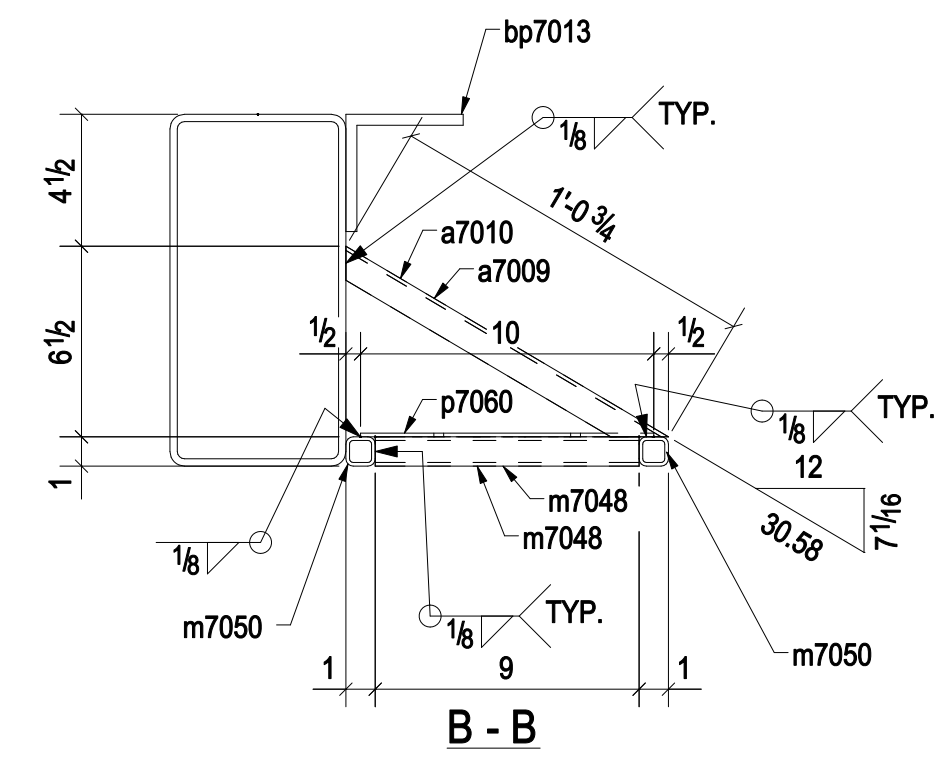


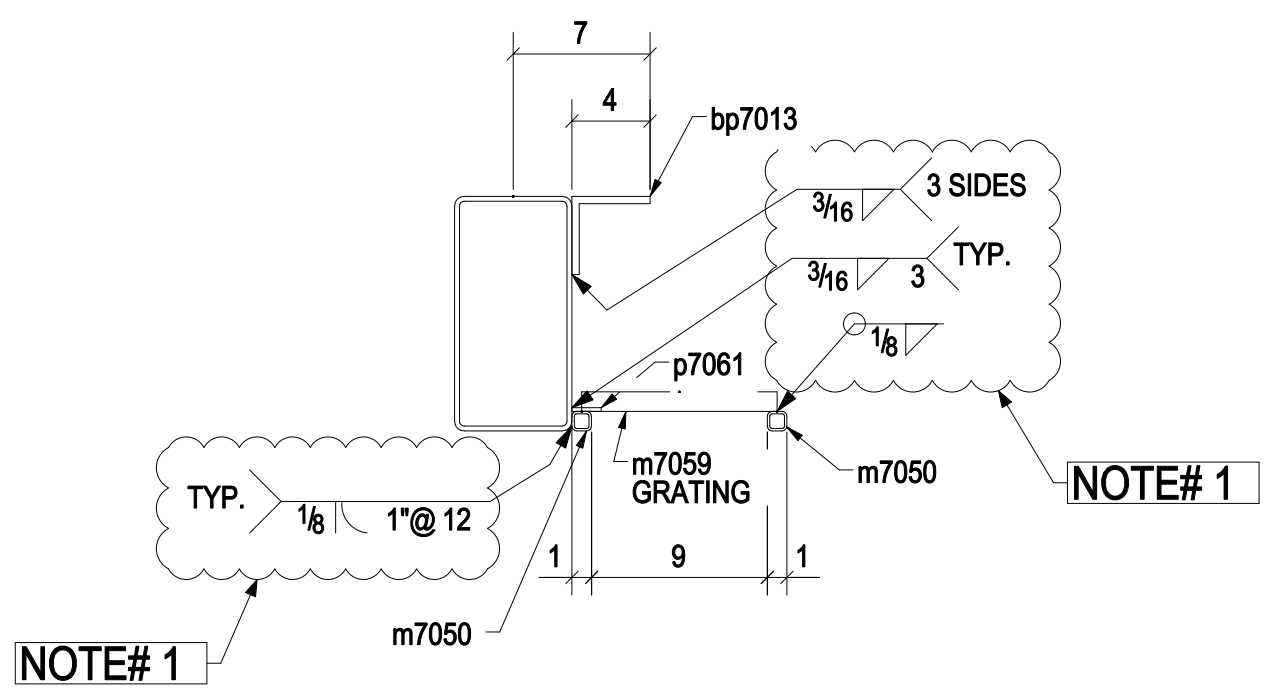
ONE - BEAM - 729B1



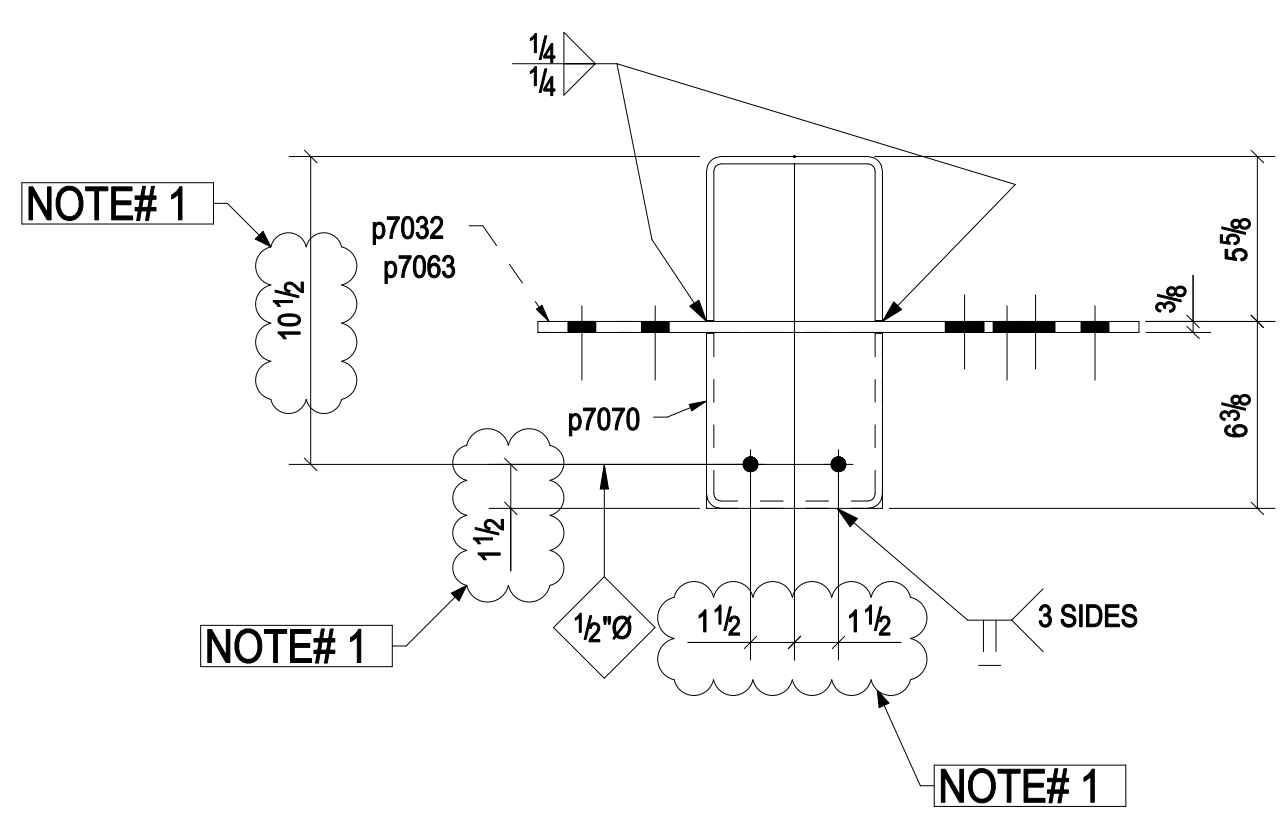
DETAIL 1



B - B



A - A



C - C

## BILL OF MATERIAL

Qty	Ship Mark	Qty Unit	DESCRIPTION	Weight lbf	LENGTH	Grade	REMARKS
729B1		1	HSS12X6X1/4	201.54	7'-4 1/2"	A500-GR.B	
1	a7009	1	L1X1X1/8	0.85	1'-0 3/4"	A36	
1	a7010	1	L1X1X1/8	0.85	1'-0 3/4"	A36	
1	bp7013	1	FL3/8"X7 1/4"	65.68	6'-9"	A36	
1	p7032	1	PL3/8"X8 3/16"	15.52	1'-8 1/2"	A36	
1	p7060	1	FL1/8"X9"	2.53	0'-10"	A36	
4	p7061	4	FL3/16"X1 1/2"	0.96	0'-3"	A36	
1	p7063	1	FL3/8"X3 1/4"	6.13	1'-5 3/4"	A36	
2	p7070	2	FL1/4"X6"	5.10	0'-6"	A36	
2	m7047	2	HSS1X1X1/8	3.81	0'-11"	A500-GR.B	
2	m7048	2	HSS1X1X1/8	3.11	0'-9"	A500-GR.B	
2	m7050	2	HSS1X1X1/8	28.03	6'-9"	A500-GR.B	
2	m7059	2	FL1"X10"	12.64	2'-11"	GRTA_1	
		8	7/8"Ø A325SC BOLT		0'-2"	Site	
			TOTAL WEIGHT THIS DRAWING	346.48			

NOTE :-  
1. APPROVER PLEASE CONFIRM

PR INDICATES PRIMER ONLY AREA WITHIN 3" OF OPEN HOLES.

REF: E703 E702 & E703

REV:	DATE:	REVISION NOTE:
A	02/16/2015	FOR APPROVAL
PROJECT:	STAMFORD RAILROAD STATION IMPROVEMENTS CITY OF STAMFORD PEDESTRIAN BRIDGE	PAY ITEM : 0040 (SITE No.1) CTDOT PROJECT No: 0301-0157 PROJECT NO: 2015-001
Customer:		DRAWN BY: EM DATE: 02/16/2015 CHECKED BY: AS DATE: 02/16/2015
FABRICATOR:		JOB NO. 1942-14E REV: A
DESIGNER:	HOLES: AS NOTED MATL SPEC. AS NOTED WELD CODE: AWS D1.1	DRAWING TITLE: BEAM
DWG SIZE: 914x609	SCALE: 1:12	DRAWING: 729

SURFACE FINISH: SSPC-SP6

PAINT SYSTEM-1  
1. (I) PRIMER CARBOZINC 859 2.5 TO 3.5 MILS DFT.  
(II) TOP COAT CARBOGUARD 893SG 4.0 TO 6.0 MILS DFT.  
(III) COLOR UTILITY TOOLBOX C703 MEDIUM GRAY.