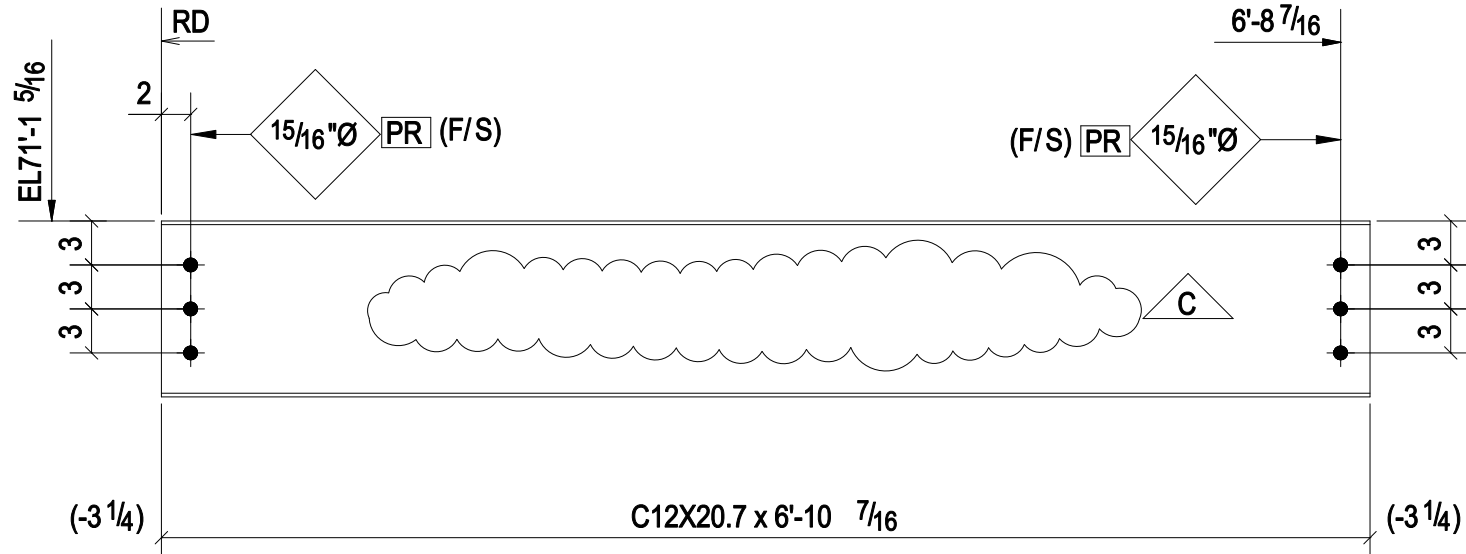
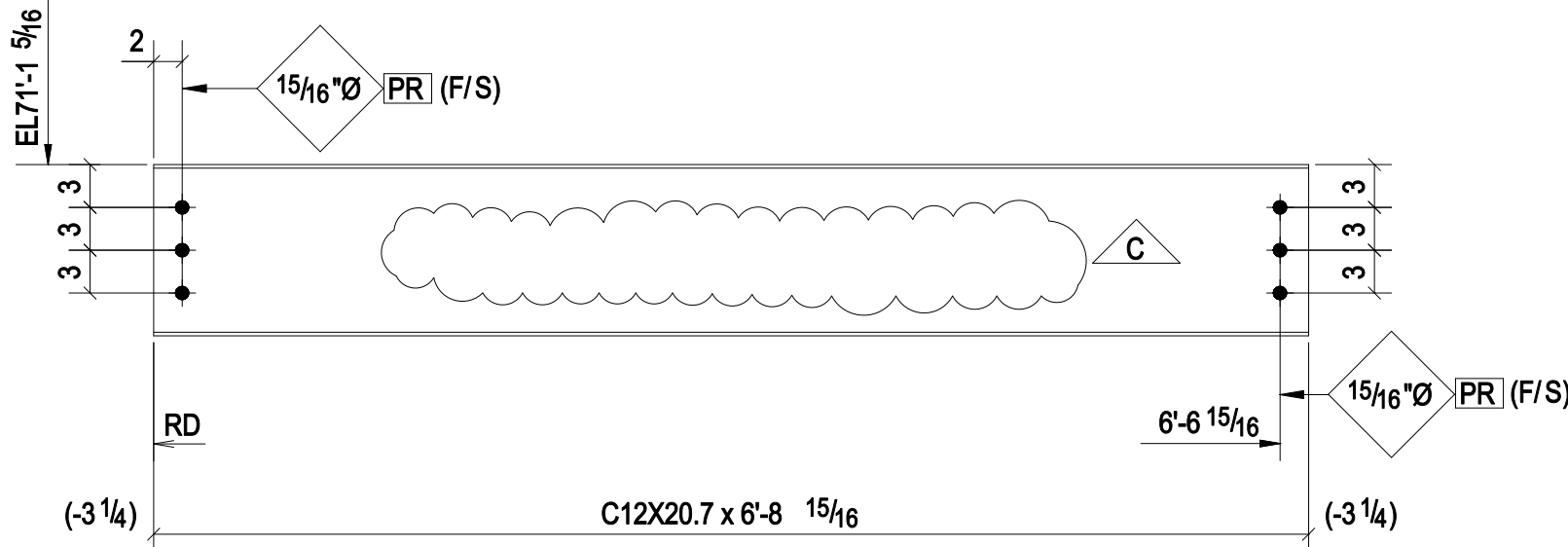


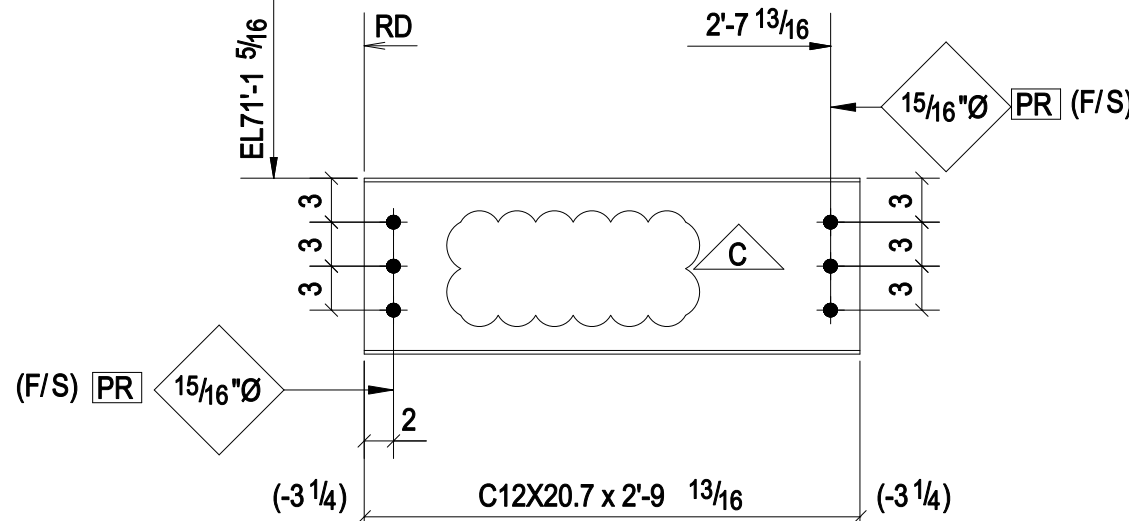
2 - BEAMS - 710B1  
TOE DIRECTION NEAR SIDE



4 - BEAMS - 710B2  
TOE DIRECTION NEAR SIDE



2 - BEAMS - 710B3  
TOE DIRECTION NEAR SIDE



2 - BEAMS - 710B4  
TOE DIRECTION NEAR SIDE

SURFACE FINISH : SSPC-SP6

PAINT SYSTEM-1

- (I) PRIMER CARBOZINC 859 2.5 TO 3.5 MILS DFT.
- (II) TOP COAT CARBOGUARD 893SG 4.0 TO 6.0 MILS DFT.
- (III) COLOR UTILITY TOOLBOX C703 MEDIUM GRAY.

## BILL OF MATERIAL

Qty	Ship Mark	Qty Unit	DESCRIPTION	Weight lbf	LENGTH	Grade	REMARKS
710B1		2	C12X20.7	285.57	6'-10 13/16"	A36	
2	p7048	2	FL3/8"X4"	7.66	0'-9"	A36	
		12	7/8"Ø A325SC BOLT		0'-2 1/4"	Site	
710B2		4	C12X20.7	568.60	6'-10 7/16"	A36	
		24	7/8"Ø A325SC BOLT		0'-2 1/4"	Site	
710B3		2	C12X20.7	279.13	6'-8 15/16"	A36	
		12	7/8"Ø A325SC BOLT		0'-2 1/4"	Site	
710B4		2	C12X20.7	116.61	2'-9 13/16"	A36	
		12	7/8"Ø A325SC BOLT		0'-2 1/4"	Site	
			TOTAL WEIGHT THIS DRAWING	139.56			

PR INDICATES PRIMER ONLY AREA WITHIN 3" OF OPEN HOLES.

REF: E703

REV:	DATE:	REVISION NOTE:
A	02/04/2015	FOR APPROVAL
B	02/09/2015	FOR APPROVAL
C	02/16/2015	REMOVE SPACER PLATES
PROJECT: STAMFORD RAILROAD STATION IMPROVEMENTS CITY OF STAMFORD PEDESTRIAN BRIDGE		PAY ITEM : 0040 (SITE No.1) CTDOT PROJECT No: 0301-0157 PROJECT NO: 2015-001
Customer:		DRAWN BY: JP DATE: 02/16/2015 CHECKED BY: AS DATE: 02/16/2015
FABRICATOR:		JOB NO. 1942-14E REV: C
DESIGNER:	HOLES: AS NOTED	MATL SPEC. AS NOTED WELD CODE: AWS D1.1
DWG SIZE: 914x609	SCALE:	DRAWING TITLE: BEAM DRAWING: 710