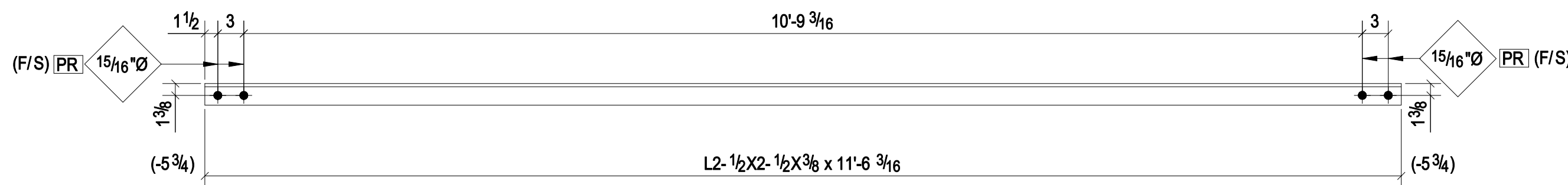
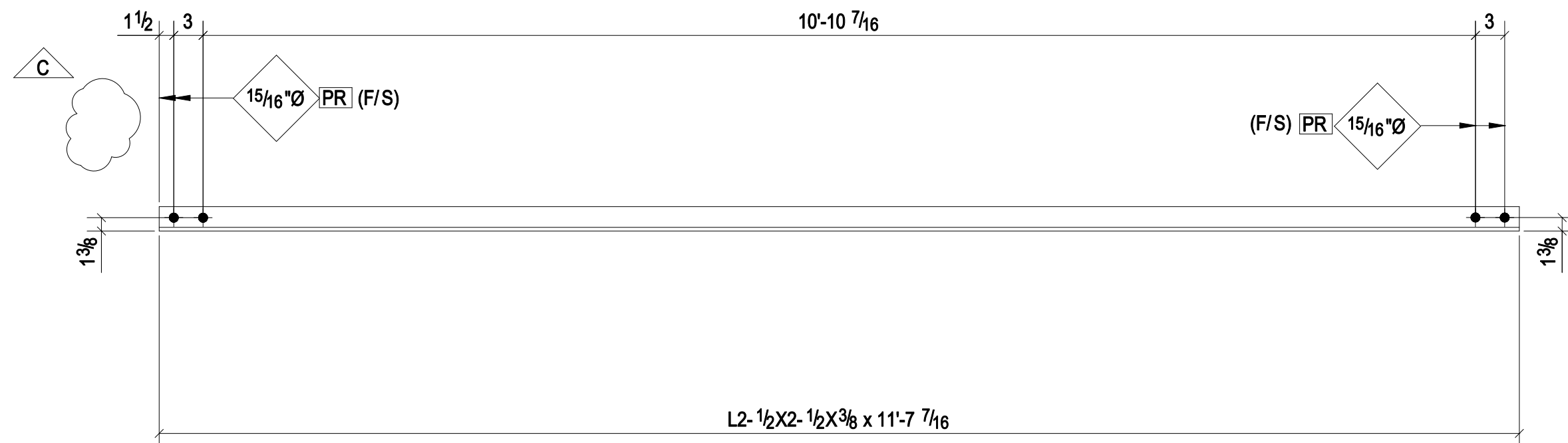


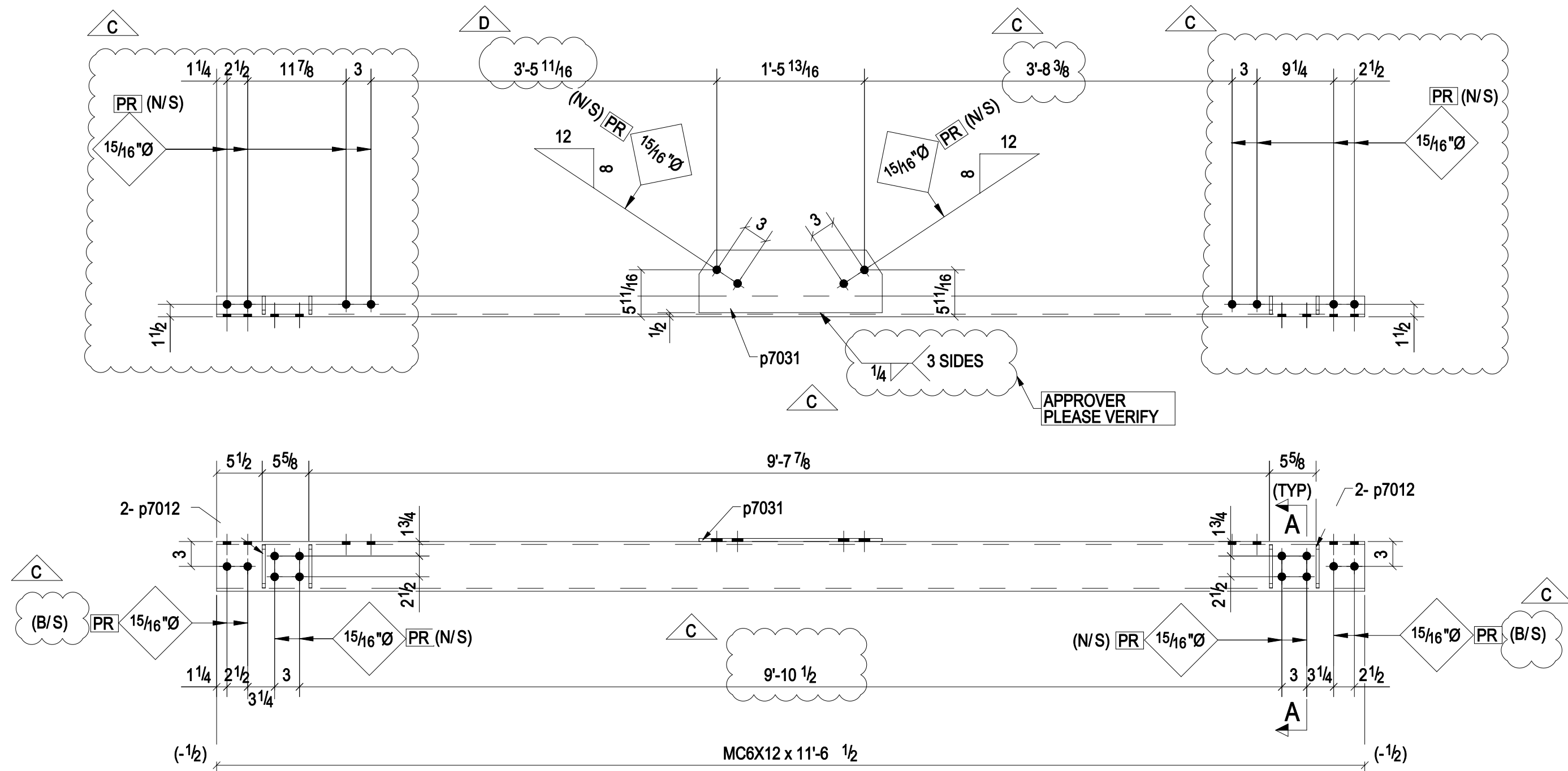
ONE - H_BRACE - 717BR1



ONE - H_BRACE - 717BR2



ONE - H_BRACE - 717BR3



ONE - H_BRACE - 717BR4

TOE DIRECTION FAR SIDE

SURFACE FINISH: SSPC-SP6

PAINT SYSTEM-1

- (I) PRIMER CARBOZINC 859 2.5 TO 3.5 MILS DFT.
- (II) TOP COAT CARBOGUARD 893SG 4.0 TO 6.0 MILS DFT.
- (III) COLOR UTILITY TOOLBOX C703 MEDIUM GRAY.

BILL OF MATERIAL

Qty	Ship Mark	Qty Unit	DESCRIPTION	Weight lbf	LENGTH	Grade	REMARKS
717BR1		1	L2-1/2X2-1/2X3/8	68.31	11'-7 1/4"	A36	
		4	7/8"Ø A325SC BOLT		0'-2"	Site	
717BR2		1	L2-1/2X2-1/2X3/8	67.80	11'-6 3/16"	A36	
		4	7/8"Ø A325SC BOLT		0'-2"	Site	
717BR3		1	L2-1/2X2-1/2X3/8	68.42	11'-7 7/16"	A36	
		4	7/8"Ø A325SC BOLT		0'-2"	Site	
717BR4		1	MC6X12	138.65	11'-6 1/2"	A36	
4	p7012	4	PL3/8"X2 3/16"	4.73	0'-5 1/4"	A36	
1	p7031	1	PL3/8"X7 9/16"	17.16	1'-10 1/8"	A36	
			TOTAL WEIGHT THIS DRAWING	67.80			

PR INDICATES PRIMER ONLY AREA WITHIN 3" OF OPEN HOLES.

REF: E702

REV:	DATE:	REVISION NOTE:
A	02/04/2015	FOR APPROVAL
B	02/09/2015	FOR APPROVAL
C	02/16/2015	ADDED HOLES, REMOVE PLATES & SPACER PLATES
PROJECT: STAMFORD RAILROAD STATION IMPROVEMENTS CITY OF STAMFORD PEDESTRIAN BRIDGE		PAY ITEM : 0040 (SITE No.1) CTDOT PROJECT No: 0301-0157 PROJECT NO: 2015-001
Customer:		DRAWN BY: RS DATE: 02/16/2015 CHECKED BY: AS DATE: 02/16/2015
FABRICATOR:		JOB NO. 1942-14E REV: C
DESIGNER:	HOLES: AS NOTED	MATL SPEC. AS NOTED
		WELD CODE: AWS D1.1
DWG SIZE: 914x609	SCALE:	
	DRAWING:	717