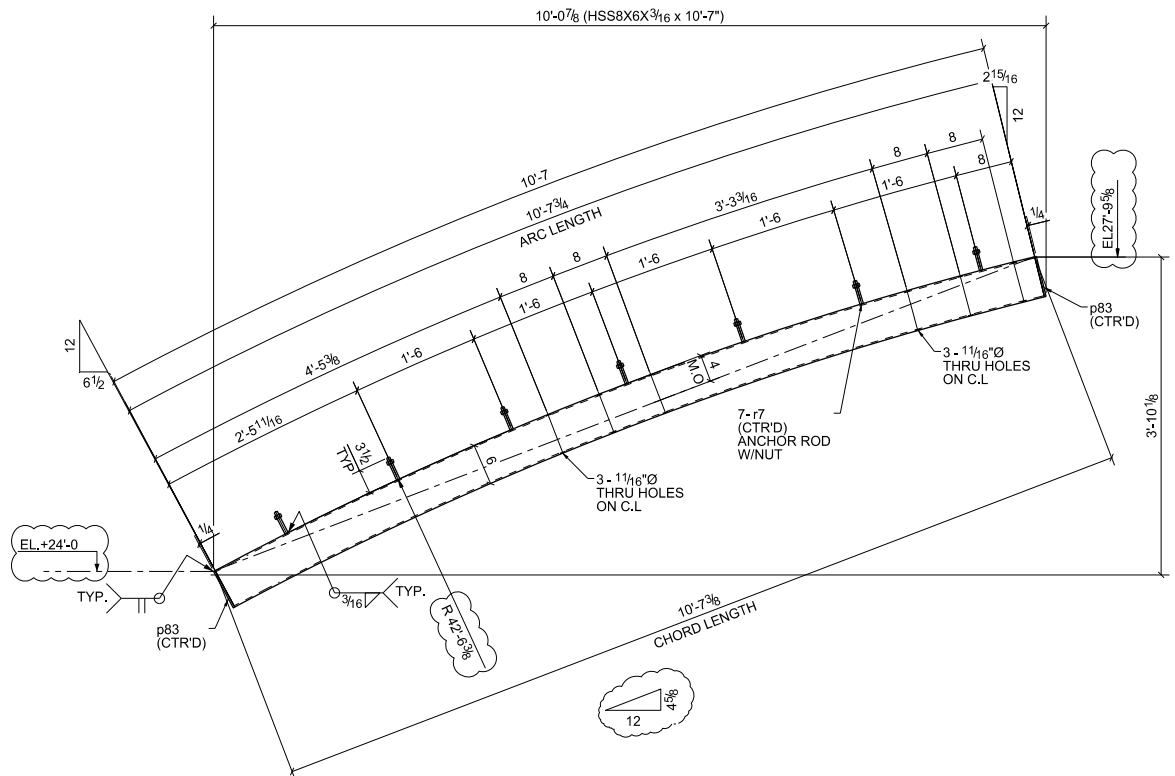
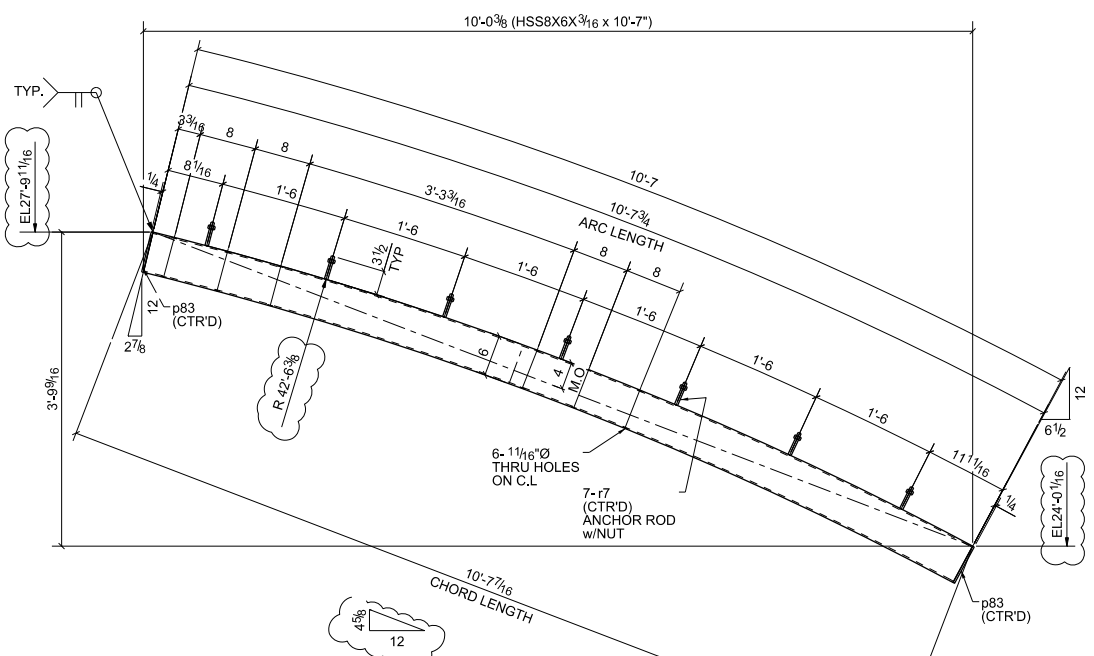


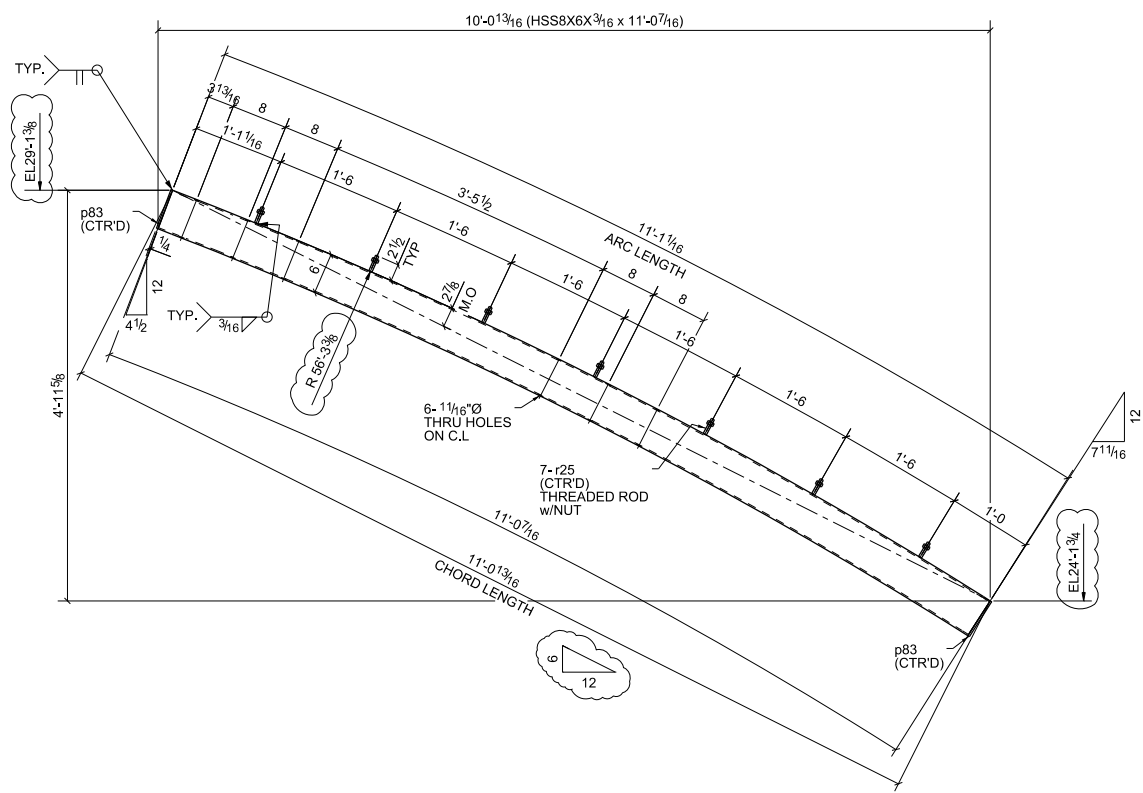
BILL OF MATERIAL					
MARK	QTY	DESCRIPTION	LENGTH	WEIGHT	REMARKS
23B1	2	BEAMS			
23B1	2	HSS8X6X3/16	10'-7"	336	A500-GR.B
p83	4	FL 1/4"x8"	0'-4"	14	A36
r7	14	ROD 1/2"	0'-3 1/2"	2	A36
14		1/2_HEAVY_HEX_NUT		1	
23B2	1	BEAM			
23B2	1	HSS8X6X3/16	11'-0 7/16"	175	A500-GR.B
p83	2	FL 1/4"x8"	0'-4"	7	A36
r25	7	ROD 1/2"	0'-2 1/2"	1	A36
7		1/2_HEAVY_HEX_NUT		0	
23B3	2	BEAMS			
23B3	2	HSS8X6X3/16	10'-7"	336	A500-GR.B
p83	4	FL 1/4"x8"	0'-4"	14	A36
r7	14	ROD 1/2"	0'-3 1/2"	2	A36
14		1/2_HEAVY_HEX_NUT		1	
TOTAL WEIGHT THIS DRAWING				888	



2 - BEAMS - 23B1



2 - BEAMS - 23B3



ONE - BEAM - 23B2

Total Qty. | Unit Qty. | Bolt Size & Length

PAINT NOTE:-
 PAINT : ONE COAT SHOP PRIMER
 PREP : SSPC-SP2

B	02/18/2015	VV	KK	FOR APPROVAL
NO.	DATE	BY	CHK'D	REVISION
PAINT SPEC.: One Coat Shop Primer				
REFERENCE DRAWINGS: Structural Design Set				

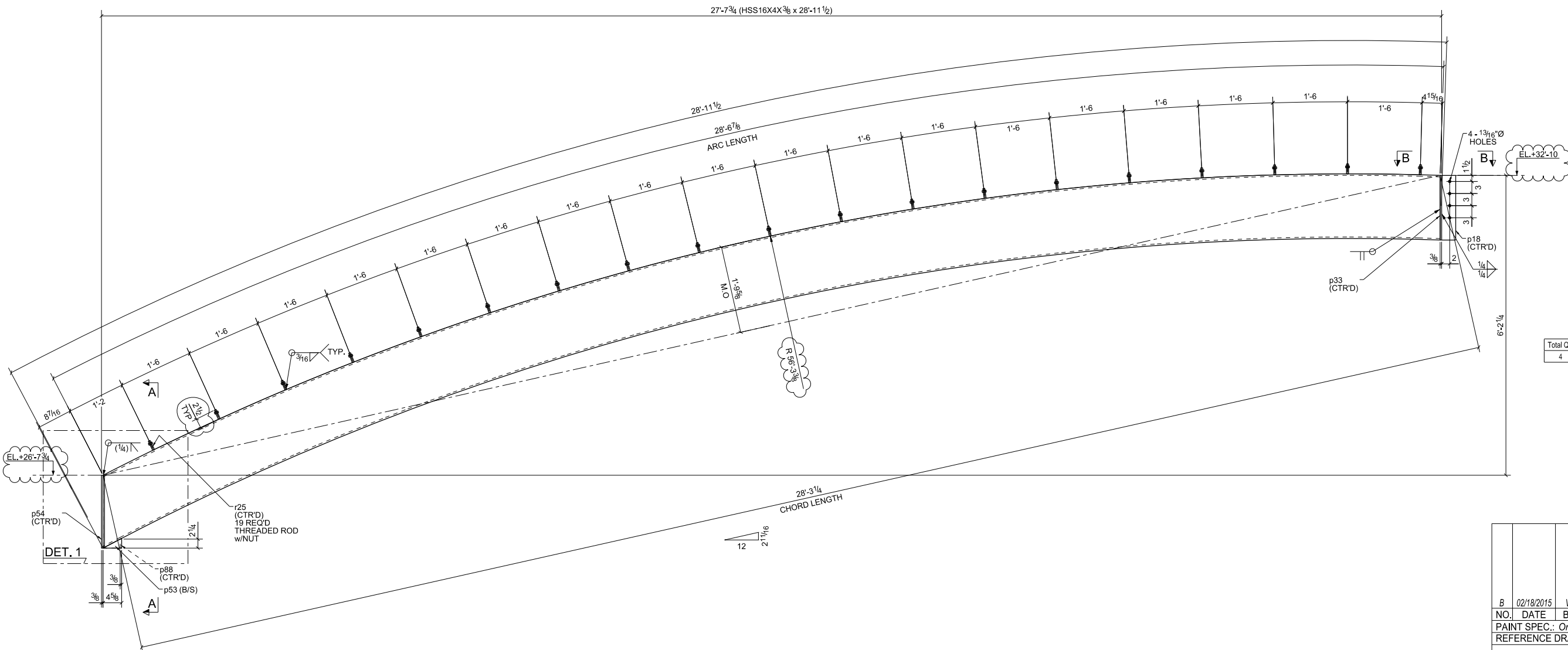
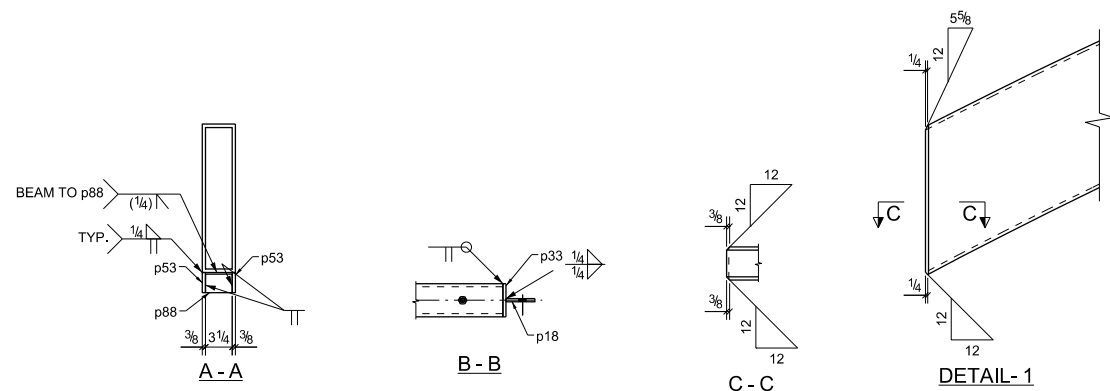


Simsona Corp.
 2275 Research Boulevard,
 Suite 500, Rockville, MD 20850
 Office: 301-774-0880
 Email: raj@simsona.com

FILE NO.	13/16 Ø U.N.	DRAWN BY	VV	P.O.#	
MET. SPEC.	A36 U.N.	CHECKED BY	KK	DATE	02/18/2015
ERECTOR DWG.	EB	CON'T. SH. SZ.	NTS	DATE	02/18/2015
		PLOT SCALE	1:24	NO. OF SHEETS	23
		SHT. #		REV.	B

BILL OF MATERIAL

MARK	QTY	DESCRIPTION	LENGTH	WEIGHT	REMARKS
24B1	1	BEAM			
24B1	1	HSS16X4X3/8	28'-11 1/2"	1301	A500-QR-B
p18	1	FL3/8"x3 1/2"	1'-4"	8	A36
p33	1	FL3/8"x4"	1'-4"	7	A36
p53	2	FL3/8"x2 7/16"	0'-4 5/8"	1	A36
p54	1	FL3/8"x4"	1'-6 1/16"	8	A36
p88	1	FL3/8"x2 1/4"	0'-3 1/4"	1	A36
r25	19	ROD1/2"	0'-2 1/2"	2	A36
19		1/2_HEAVY_HEX_NUT		1	
TOTAL WEIGHT THIS DRAWING				1326	



Total Qty.	Unit Qty.	Bolt Size & Length
4	4	BOLT 3/4" Ø A325N 0'-2"

ONE - BEAM - 24B1

PAINT NOTE:-
 PAINT : ONE COAT SHOP PRIMER
 PREP : SSPC-SP2

B				02/18/2015				VW				KK				FOR APPROVAL			
NO.	DATE	BY	CHK'D	REVISION															
PAINT SPEC.: One Coat Shop Primer																			
REFERENCE DRAWINGS: Structural Design Set																			

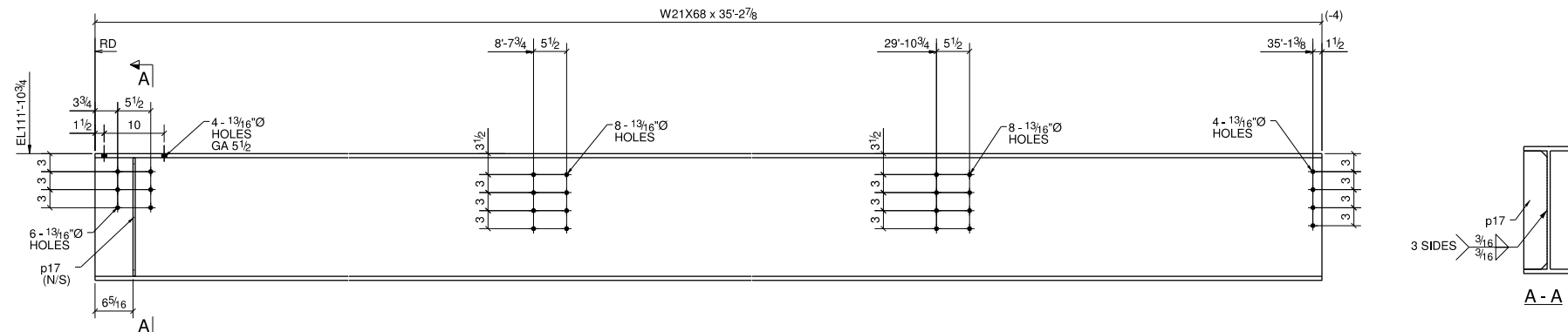
Simsona Corp.
 2275 Research Boulevard,
 Suite 500, Rockville, MD 20850
 Office: 301-774-0880
 Email: raj@simsona.com

CUSTOMER:

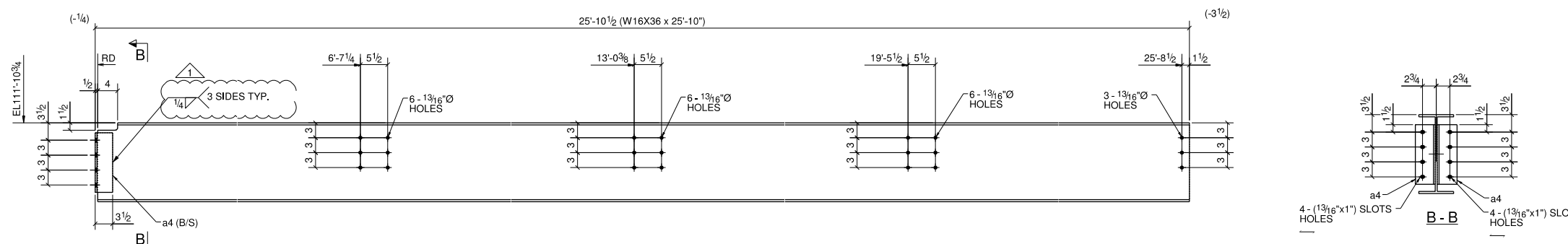
HOLE DIA	13/16 Ø U.N.	DRAWN BY	VW	P.O.#	
MET. SPEC.	A36 U.N.	CHECKED BY	KK	DATE	02/18/2015
ERECTOR DWG.	EB	DRYING SH. S.C.	NTS	PLOT SCALE	1:24
				SHT.#	24

BILL OF MATERIAL

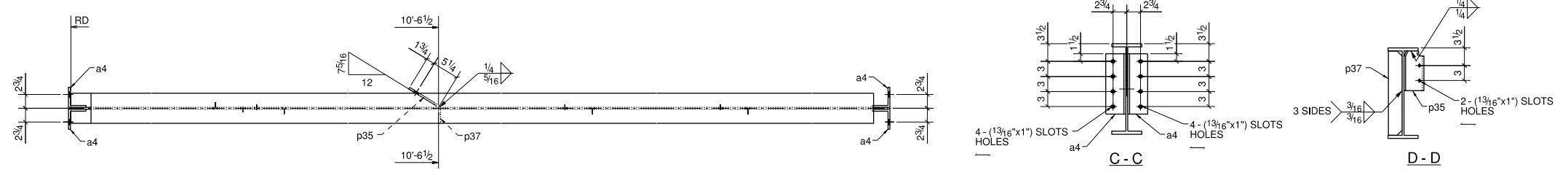
MARK	QTY	DESCRIPTION	LENGTH	WEIGHT	REMARKS
25B1	1	BEAM			SO-2
25B1	1	W21X68	35'-2 7/8"	2399	A992
p17	1	PL3/8"X3 7/8"	1'-7 11/16"	8	A36
25B2	1	BEAM			SO-2
25B2	1	W16X36	25'-10"	932	A992
a4	2	L4X3-1/2X3/8	1'-0"	18	A36
25B3	1	BEAM			SO-2
25B3	1	W18X46	26'-0 7/8"	1198	A992
a4	4	L4X3-1/2X3/8	1'-0"	36	A36
p35	1	FL3/8"X7"	0'-7 15/16"	6	A36
p37	1	FL3/8"X2 3/4"	1'-4 3/4"	5	A36
TOTAL WEIGHT THIS DRAWING				4601	



ONE - BEAM - 25B1



ONE - BEAM - 25B2



ONE - BEAM - 25B3

PROJECT PHASING		
MARK	QTY	PHASE
25B1	1	Phase 1
25B2	1	Phase 1
25B3	1	Phase 1

SEQUENCE : 1

Total Qty.	Unit Qty.	Bolt Size & Length
8	8	BOLT 3/4" Ø A325N 0'-1 3/4"
23	23	BOLT 3/4" Ø A325N 0'-2"

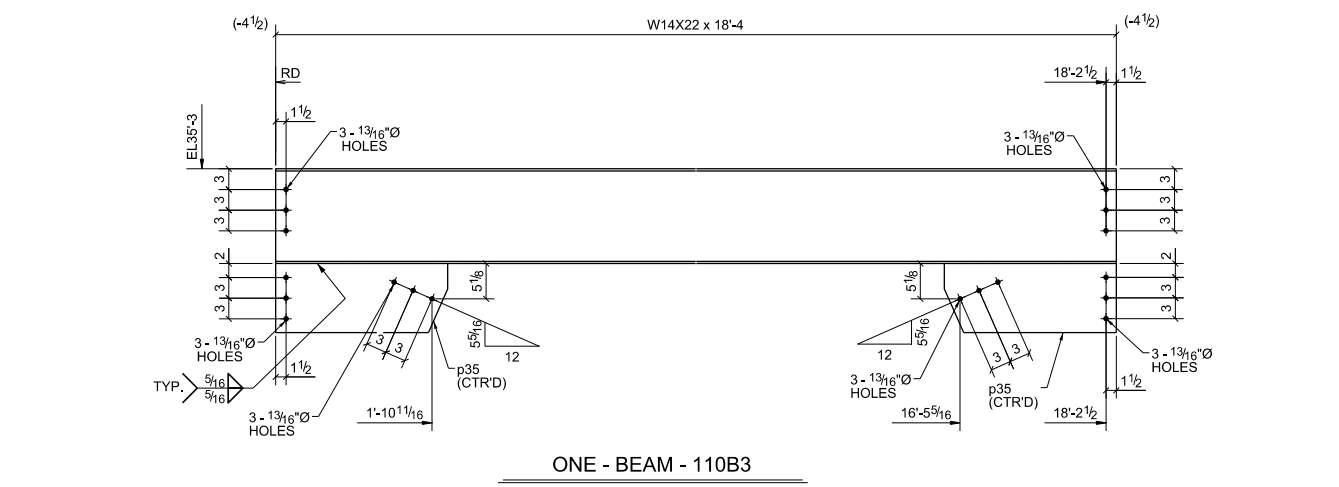
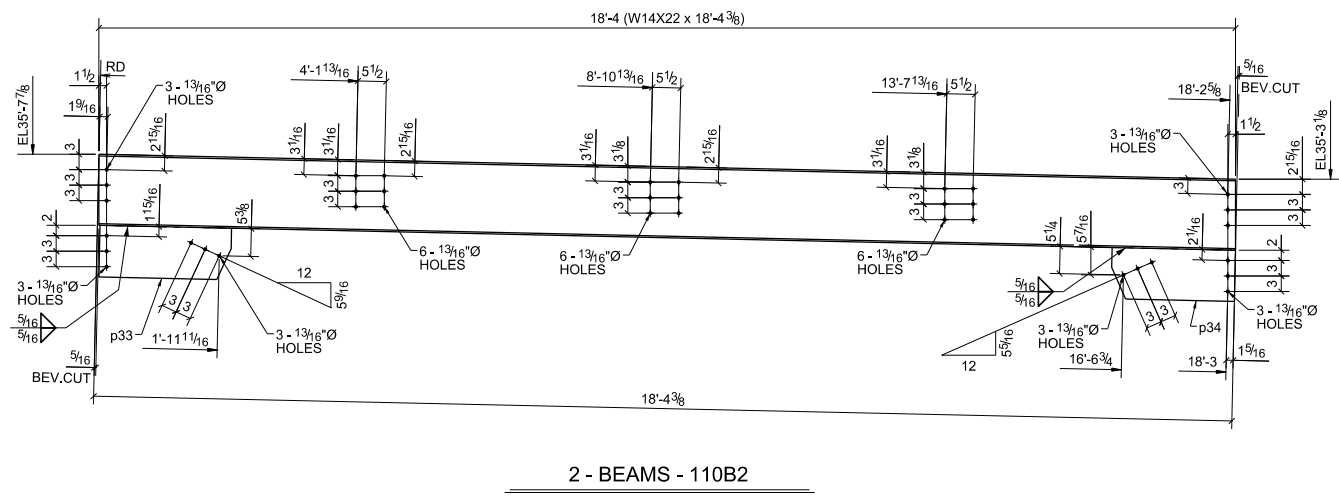
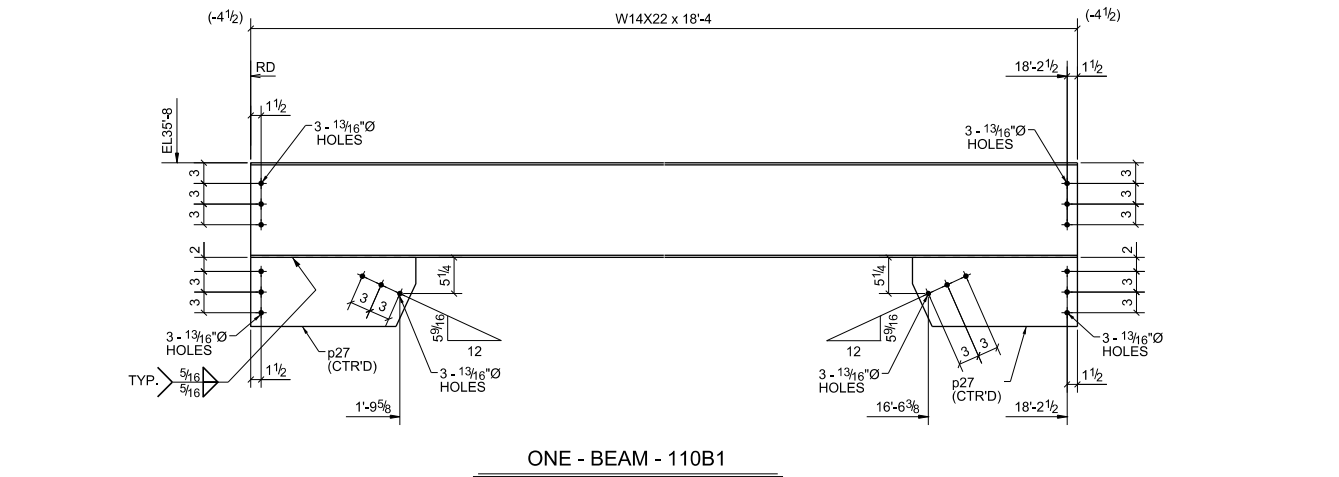
PAINT NOTE:-
 PAINT : ONE SHOP COAT OF RUST INHIBITIVE GREY PRIMER
 PREP : SSPC-SP2

11/21/14 FOR FABRICATION		PRINT RECORD	
DATE	APP.	SHOP	FIELD
		DIST.	COORD.
		F.C.	OFFICE
<small>ALL INFORMATION PROVIDED ON THESE DRAWINGS ARE PREPARED IN ACCORDANCE TO THE CONTRACT DOCUMENTS AND THE SPECIFICATIONS. ALL CLOUDED AREAS SHOWN ARE DUE TO LACK OF INFORMATION PROVIDED BY THE CONTRACTOR/ARCHITECTS OR ENGINEERS. IT IS THE RESPONSIBILITY OF THE CONTRACTOR/ARCHITECTS & ENGINEERS TO VERIFY THE INFORMATION AVAILABLE TO US. WE MUST HAVE THESE AREAS ANSWERED BY THE GENERAL CONTRACTOR, ARCHITECT & ENGINEER BEFORE WE CAN START FABRICATING ANY MATERIAL. PLEASE RESPOND WITH THIS INFORMATION BY MARKING UP OUR SHOP DRAWINGS.</small>			
MATERIAL: A36 UNO	HOLE SIZE: 13/16" Ø UNO	BOLT GRADE: A325-N UNO	MINIMUM WELD: 3/16"
ARCH. _____ ENGR. _____ CONTR. _____		JOB NAME & LOCATION: College Park Airport Operations Building	
REF: VV 11/21/14 CHECKED BY: VT 11/21/14		JOB: 14-115 SHEET: 25	
SHEET TITLE: BEAM			
MODIFIED DATE: 11/21/14		LAST PLOT DATE: 11/21/14	
CAD FILENAME: 25			

Field structure

BILL OF MATERIAL


MARK	QTY	DESCRIPTION	LENGTH	WEIGHT	REMARKS
110B1	1	BEAM			SQ-2
110B1	1	W14X22	18'-4"	405	A992
p27	2	PL1/2"X10"	1'-11 15/16"	65	A36
110B2	2	BEAMS			BEV-2
110B2	2	W14X22	18'-4 3/8"	811	A992
p33	2	FL1/2"X10"	2'-1 1/2"	70	A36
p34	2	PL1/2"X9 15/16"	1'-11 7/8"	65	A36
110B3	1	BEAM			SQ-2
110B3	1	W14X22	18'-4"	405	A992
p35	2	PL1/2"X10"	2'-0 15/16"	68	A36
TOTAL WEIGHT THIS DRAWING				1890	



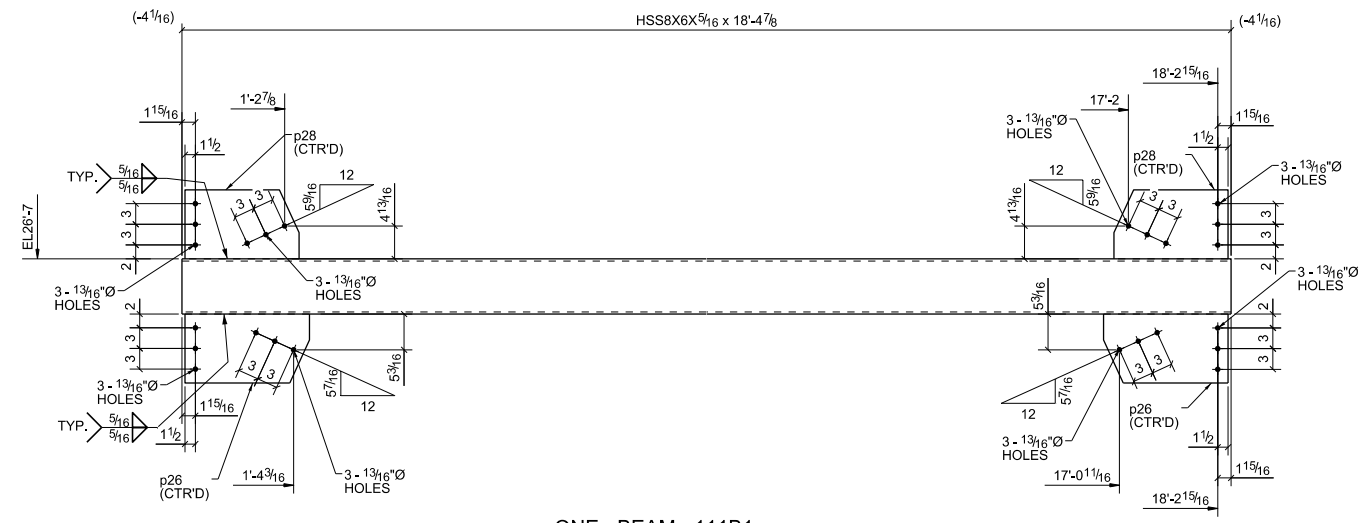
PROJECT PHASING				
Erection	Total	Phase		
Mark	Qty.	1	5	
110B1	1	1	-	
110B2	2	2	-	
110B3	1	1	-	

Total Qty.	Unit Qty.	Bolt Size & Length		
24	18	BOLT	3/4" Ø A325SC	0'-1 3/4"

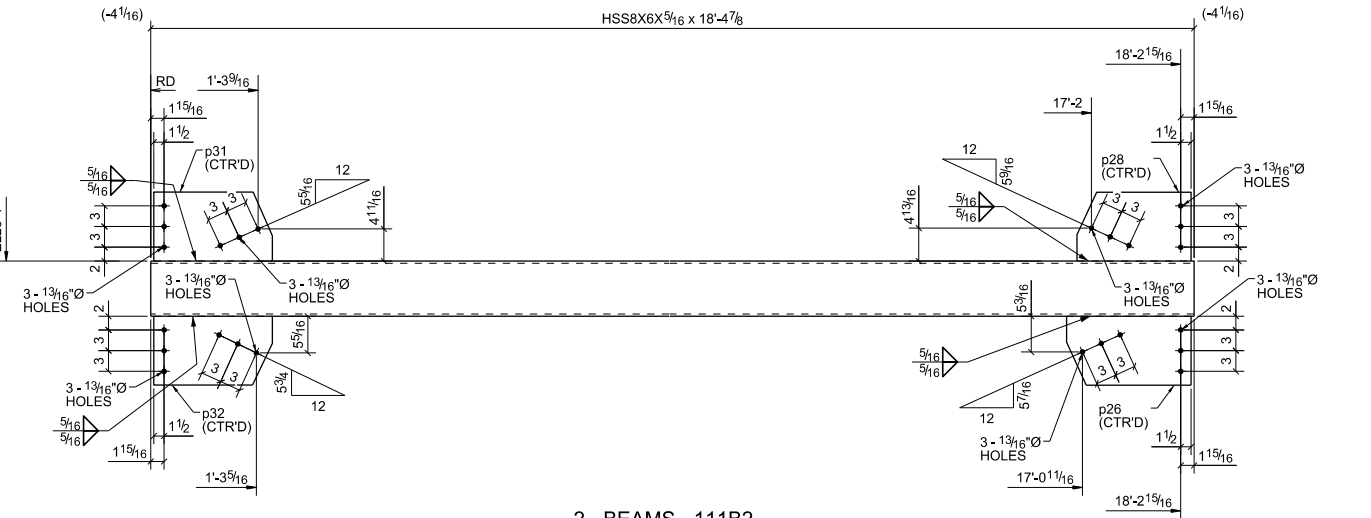
PAINT NOTE:
 PAINT: ONE SHOP COAT OF STANDARD GRAY PRIMER
 PREP: SSPC-SP2

01/27/2015 FOR FABRICATION PRINT RECORD						
DATE	APP.	SHOP	FIELD	DIST.	COORD.	F.C. OFFICE
ALL INFORMATION PROVIDED ON THESE DRAWINGS ARE PREPARED IN ACCORDANCE TO THE CONTRACT DOCUMENTS AND THE SPECIFICATIONS. ALL CLOUDED AREAS SHOWN ARE DUE TO LACK OF INFORMATION PROVIDED BY THE CONTRACT DOCUMENTS OR SPECIFICATIONS. BUT PREPARED WITH ALL THE INFORMATION AVAILABLE TO US. WE MUST HAVE THESE AREAS ANSWERED BY THE GENERAL CONTRACTOR, ARCHITECT & ENGINEER BEFORE WE CAN START FABRICATING ANY MATERIAL. PLEASE RESPOND WITH THIS INFORMATION BY MARKING UP OUR SHOP DRAWINGS.						
MATERIAL:	HOLE SIZE:	BOLT GRADE:	MINIMUM WELD:	ELECTRODE:		
A36 UNO	13/16" Ø UNO	A325-N UNO	3/16"	E-70XX		
Simsona Corp. 2275 Research Boulevard, Suite 500, Rockville, MD 20850 Office: 301-774-0880 Email: raj@simsona.com						
ARCH.			JOB NAME & LOCATION:			
ENGR.			Mr. Tire, Auto Service Centers.			
CONTR.						
REF:						JOB: 14-116
DRAWN BY: VV 01/27/2015 CHECKED BY: MSB 01/27/2015						SHEET: 110
SHEET TITLE: BEAM						
MODIFIED DATE: 01/27/2015 LAST PLOT DATE: 01/27/2015 CAD FILENAME: 110						

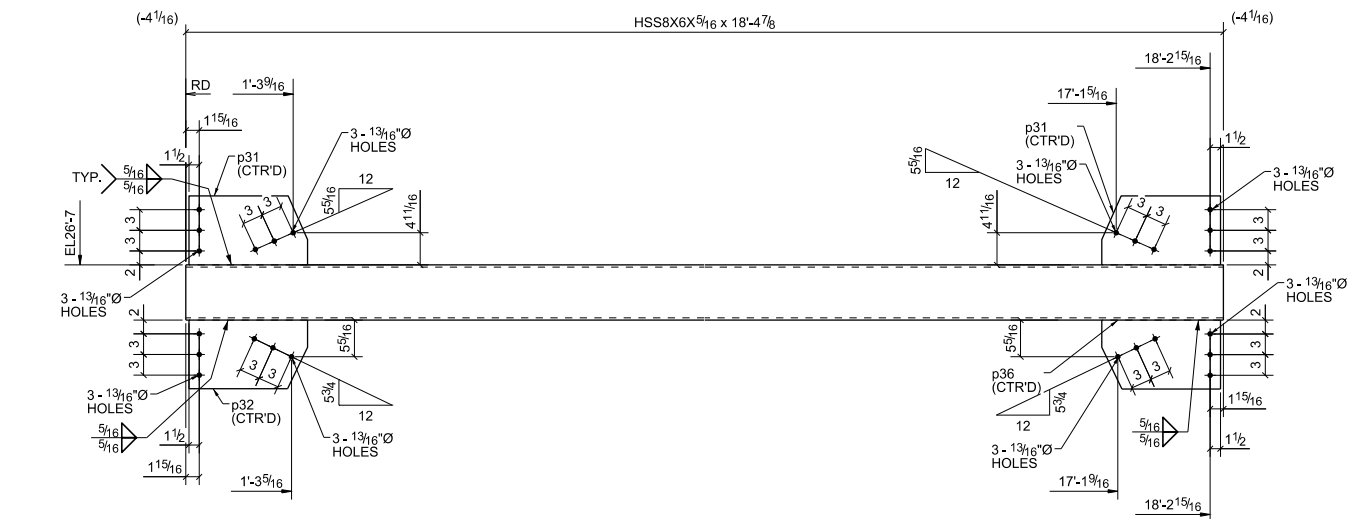
Telle structures



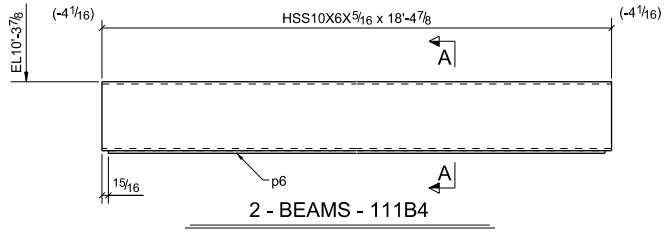
ONE - BEAM - 111B1



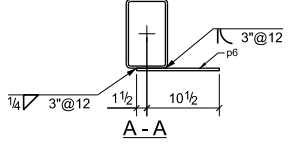
2 - BEAMS - 111B2



ONE - BEAM - 111B3



2 - BEAMS - 111B4



BILL OF MATERIAL

MARK	QTY	DESCRIPTION	LENGTH	WEIGHT	REMARKS
111B1	1	BEAM			SQ-2
111B1	1	HSS8X6X5/16	18'-4 7/8"	475	A992
p26	2	PL1/2"X10"	1'-6 1/16"	49	A36
p28	2	PL1/2"X10"	1'-4 9/16"	45	A36
111B2	2	BEAMS			SQ-2
111B2	2	HSS8X6X5/16	18'-4 7/8"	951	A992
p26	2	PL1/2"X10"	1'-6 1/16"	49	A36
p28	2	PL1/2"X10"	1'-4 9/16"	45	A36
p31	2	PL1/2"X10"	1'-5 1/4"	46	A36
p32	2	PL1/2"X10"	1'-5 1/4"	46	A36
111B3	1	BEAM			SQ-2
111B3	1	HSS8X6X5/16	18'-4 7/8"	475	A992
p31	2	PL1/2"X10"	1'-5 1/4"	46	A36
p32	1	PL1/2"X10"	1'-5 1/4"	23	A36
p36	1	PL1/2"X10"	1'-5 1/4"	23	A36
111B4	2	BEAMS			SQ-2
111B4	2	HSS10X6X5/16	18'-4 7/8"	1097	A992
p6	2	FL3/8"X12"	18'-3"	559	A36
TOTAL WEIGHT THIS DRAWING				3930	

PROJECT PHASING				
Erection	Total	Phase		
111B1	1	1	1	-
111B2	2	2	2	-
111B3	1	1	1	-
111B4	2	2	2	-

Total Qty./Unit Qty. Bolt Size & Length

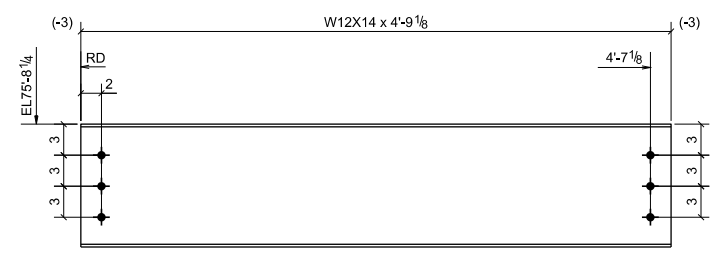
PAINT NOTE:
 PAINT: ONE SHOP COAT OF STANDARD GRAY PRIMER
 PREP: SSPC-SP2

01/27/2015 FOR FABRICATION PRINT RECORD						
DATE	APP.	SHOP	FIELD	DIST.	COORD.	F.C. OFFICE
<small>ALL INFORMATION PROVIDED ON THESE DRAWINGS ARE PREPARED IN ACCORDANCE TO THE CONTRACT DOCUMENTS AND THE SPECIFICATIONS. ALL CLOTTED AREAS SHOWN ARE DUE TO LACK OF INFORMATION PROVIDED BY THE CONTRACT DOCUMENTS OR SPECIFICATIONS. BUT PREPARED WITH ALL THE INFORMATION AVAILABLE TO US. WE MUST HAVE THESE AREAS ANSWERED BY THE GENERAL CONTRACTOR, ARCHITECT & ENGINEER BEFORE WE CAN START FABRICATING ANY MATERIAL. PLEASE RESPOND WITH THIS INFORMATION BY MARKING UP OUR SHOP DRAWINGS.</small>						
MATERIAL:	HOLE SIZE:	BOLT GRADE:	MINIMUM WELD:	ELECTRODE:		
A36 UNO	13/16" Ø UNO	A325-N UNO	3/16"	E-70XX		
			Simsona Corp. 2275 Research Boulevard, Suite 500, Rockville, MD 20850 Office: 301-774-0880 Email: raj@simsona.com			
ARCH.	JOB NAME & LOCATION:					
ENGR.	Mr. Tire, Auto Service Centers.					
CONTR.						
REF:						JOB: 14-116
DRAWN BY: VV	01/27/2015	CHECKED BY: MSB	01/27/2015			SHEET: 111
BEAM						
MODIFIED DATE: 01/27/2015 LAST PLOT DATE: 01/27/2015 CAD FILENAME: 111						

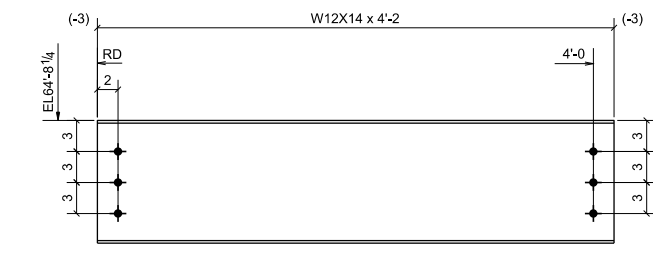
Table structures

BILL OF MATERIAL

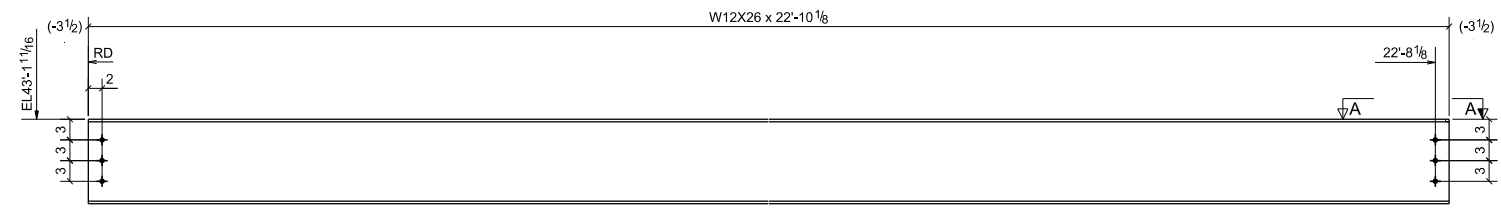
MARK	QTY	DESCRIPTION	LENGTH	WEIGHT	REMARKS
1115B1	6	BEAMS			SQ-2
1115B1	6	W12X14	4'-9 1/8"	404	A992
1115B2	5	BEAMS			SQ-2
1115B2	5	W12X26	22'-10 1/8"	2974	A992
1115B3	7	BEAMS			SQ-2
1115B3	7	W12X14	4'-2"	413	A992
1115B4	6	BEAMS			SQ-2
1115B4	6	W12X14	13'-8 1/8"	1162	A992
1115B5	5	BEAMS			SQ-2
1115B5	5	W12X14	13'-2 1/8"	933	A992
1115B6	5	BEAMS			SQ-2
1115B6	5	W12X14	14'-3"	1009	A992
a3	10	L4X4X1/2	0'-5 1/2"	58	A36
1115B7	1	BEAM			SQ-2
1115B7	1	W14X22	19'-0 1/2"	421	A992
p10	1	PL1/2"x7 1/2"	2'-3 3/16"	25	A36
p29	2	PL1/2"x9"	1'-0 7/16"	28	A36
TOTAL WEIGHT THIS DRAWING				7427	



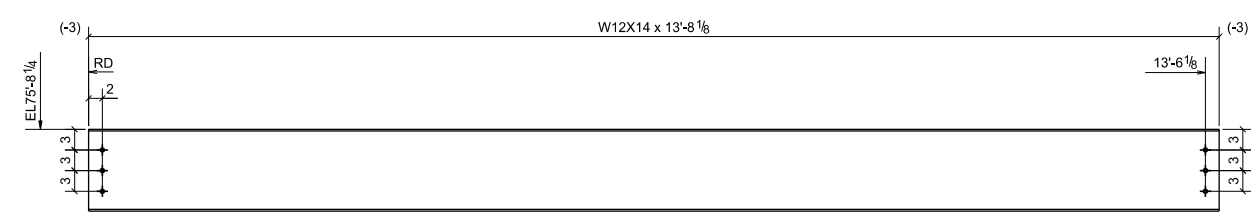
6 - BEAMS - 1115B1



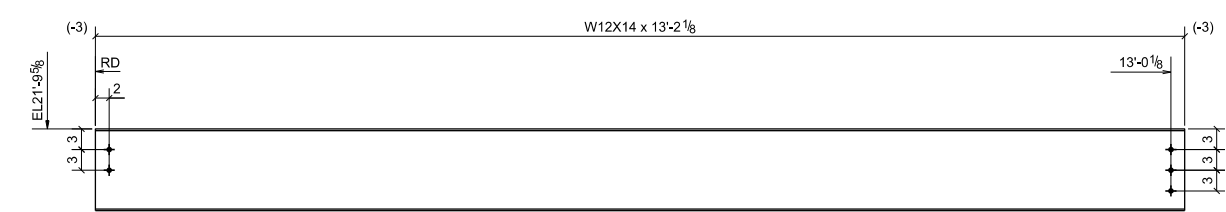
7 - BEAMS - 1115B3



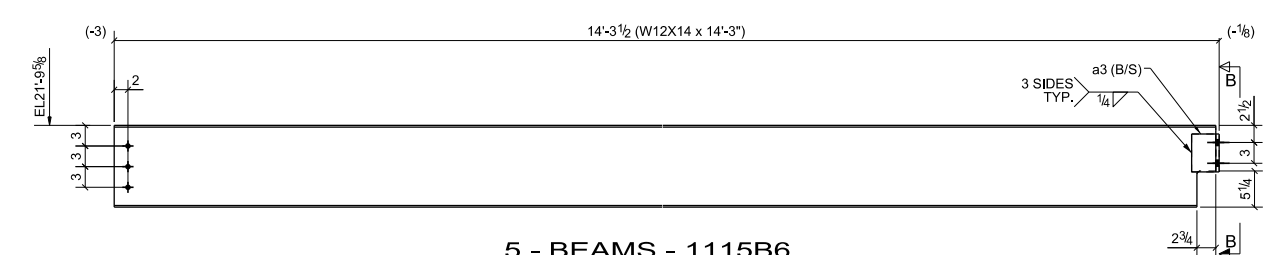
5 - BEAMS - 1115B2



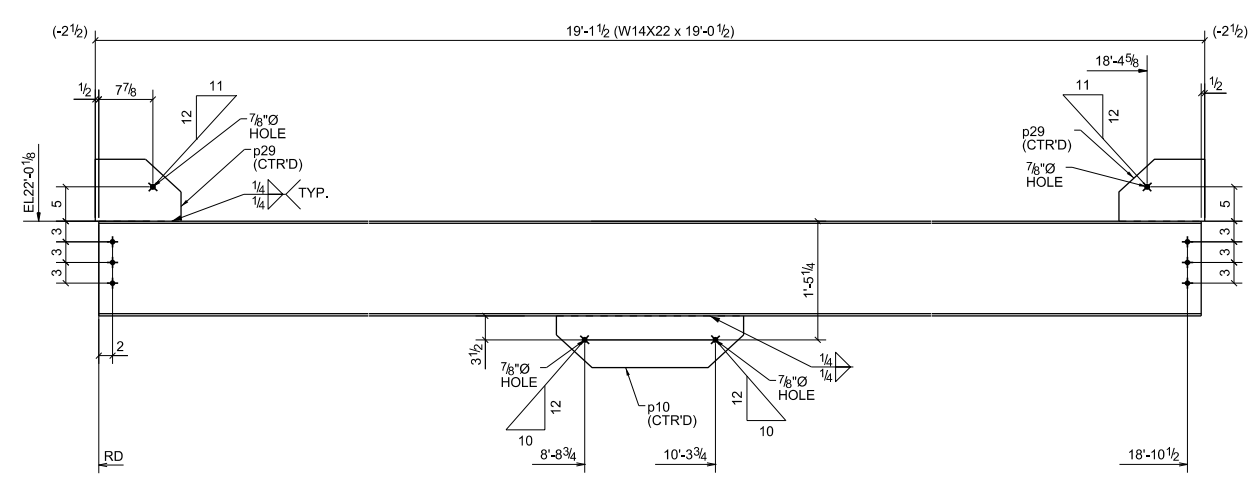
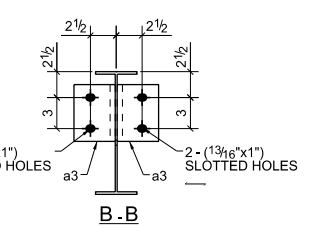
6 - BEAMS - 1115B4



5 - BEAMS - 1115B5



5 - BEAMS - 1115B6



ONE - BEAM - 1115B7

Total Qty.	Unit Qty.	Bolt Size & Length
154	26	BOLT 3/4" Ø A325N 0'-1 3/4"
50	10	BOLT 3/4" Ø A325N 0'-2"
6	6	BOLT 3/4" Ø A325N 0'-2 1/4"

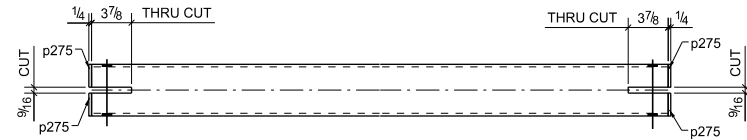
GENERAL NOTES:-

1. PREP. : PROJ-PAINT
2. FINISH : PROJ-FINISH
3. WELD : 70 SERIES WIRE
4. BOLTS : PROJ-BOLT_GRADE
5. HOLES : PROJ-HOLE_DIA
6. 0'-3" NO PAINT AROUND OPEN HOLES FOR SC BOLTS

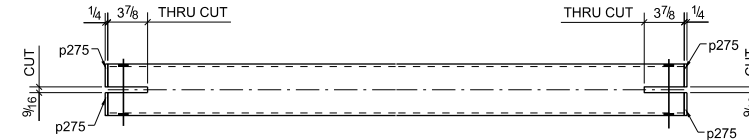
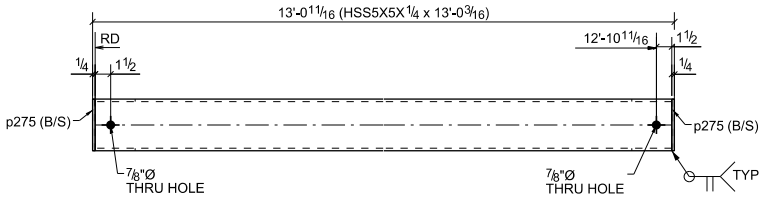
△		
△		
△		
△	For Approval	02/16/2016
NO.	REVISION	DATE
PROJECT NAME: STERLING NORTHGATE		
LOCATION:		
CONTR: -		
		Simsona Corp. 2275 Research Boulevard, Suite 500, Rockville, MD 20850 Office: 301-774-0880 Email: raj@simsona.com
DRAWN BY: KMR	DATE: 02/16/2016	CHECKED BY: DRN
JOB NO. -	BEAM	SHEET NO. 1115

BILL OF MATERIAL

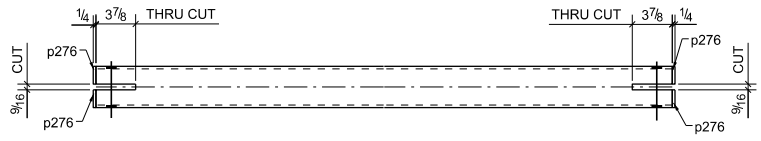
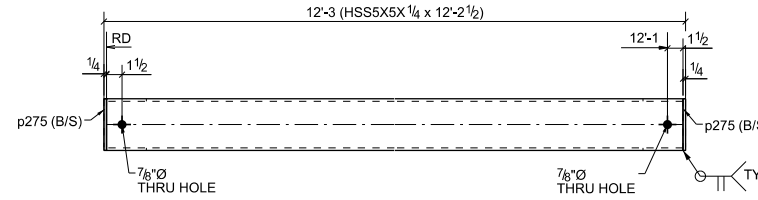
MARK	QTY	DESCRIPTION	LENGTH	WEIGHT	REMARKS
1128BR1	4	BRACES			SQ-2
1128BR1	4	HSS5X5X1/4	13'-0 3/16"	762	A500-GR.B
p275	16	PL1/4"X2 1/4"	0'-5"	13	A36
1128BR2	6	BRACES			SQ-2
1128BR2	6	HSS5X5X1/4	12'-2 1/2"	1072	A500-GR.B
p275	24	PL1/4"X2 1/4"	0'-5"	19	A36
1128BR3	4	BRACES			SQ-2
1128BR3	4	HSS4X4X1/4	12'-3 7/16"	564	A500-GR.B
p276	16	PL1/4"X1 3/4"	0'-4"	8	A36
1128BR4	2	BRACES			SQ-2
1128BR4	2	HSS4X4X1/4	12'-3 3/8"	282	A500-GR.B
p276	8	PL1/4"X1 3/4"	0'-4"	4	A36
1128BR5	2	BRACES			SQ-2
1128BR5	2	HSS4X4X3/16	12'-3 3/8"	216	A500-GR.B
p276	8	PL1/4"X1 3/4"	0'-4"	4	A36
1128BR6	2	BRACES			SQ-2
1128BR6	2	HSS4X4X3/16	12'-6 3/4"	221	A500-GR.B
p276	8	PL1/4"X1 3/4"	0'-4"	4	A36
TOTAL WEIGHT THIS DRAWING				3166	



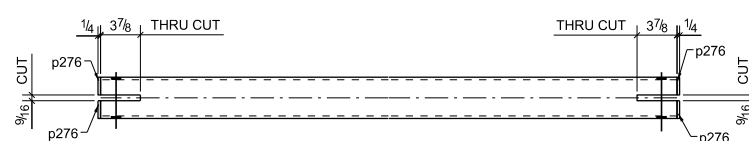
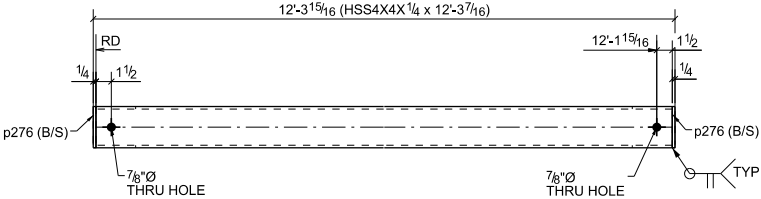
4 - BRACES - 1128BR1



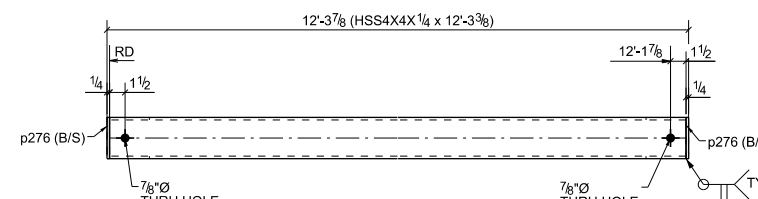
6 - BRACES - 1128BR2



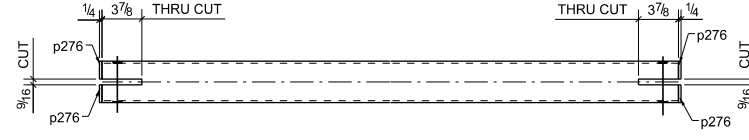
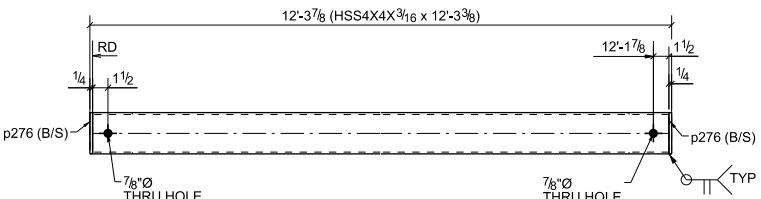
4 - BRACES - 1128BR3



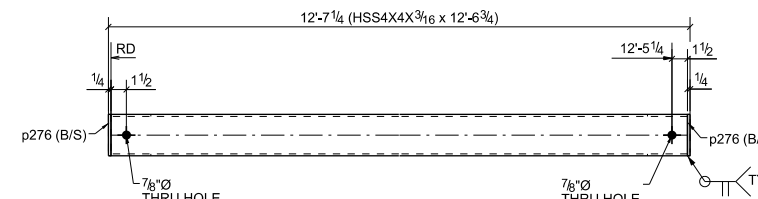
2 - BRACES - 1128BR4



2 - BRACES - 1128BR5



2 - BRACES - 1128BR6



Total Qty	Unit Qty	Bolt Size & Length
10	4	BOLT 3/4" Ø A307 0'-5"
10	2	BOLT 3/4" Ø A307 0'-6"
10	4	BOLT 3/4" Ø A325N 0'-5 1/4"
10	2	BOLT 3/4" Ø A325N 0'-6 1/4"

GENERAL NOTES:-

1. PREP : PROJ-PAINT
2. FINISH : PROJ-FINISH
3. WELD : 70 SERIES WIRE
4. BOLTS : PROJ-BOLT_GRADE
5. HOLES : PROJ-HOLE_DIA
6. 0'-3" NO PAINT AROUND OPEN HOLES FOR SC BOLTS

△		
△		
△		
△	For Approval	02/16/2016
NO.	REVISION	DATE
PROJECT NAME: STERLING NORTHGATE		
LOCATION:		
CONTR: -		
Simsona Corp. 2275 Research Boulevard, Suite 500, Rockville, MD 20850 Office: 301-774-0880 Email: raj@simsona.com		
DRAWN BY: KMR	DATE: 02/16/2016	CHECKED BY: DRN
JOB NO. -	BRACE	SHEET NO. 1128