

BILL OF MATERIAL

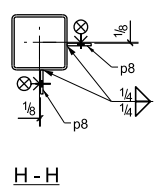
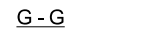
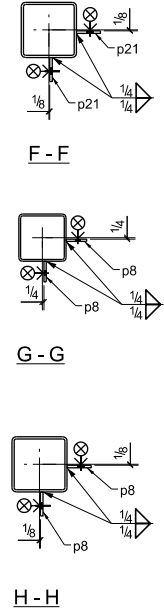
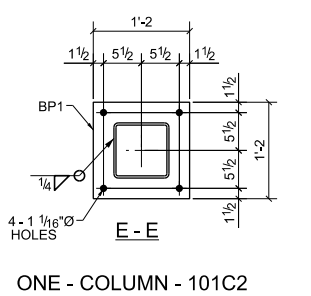
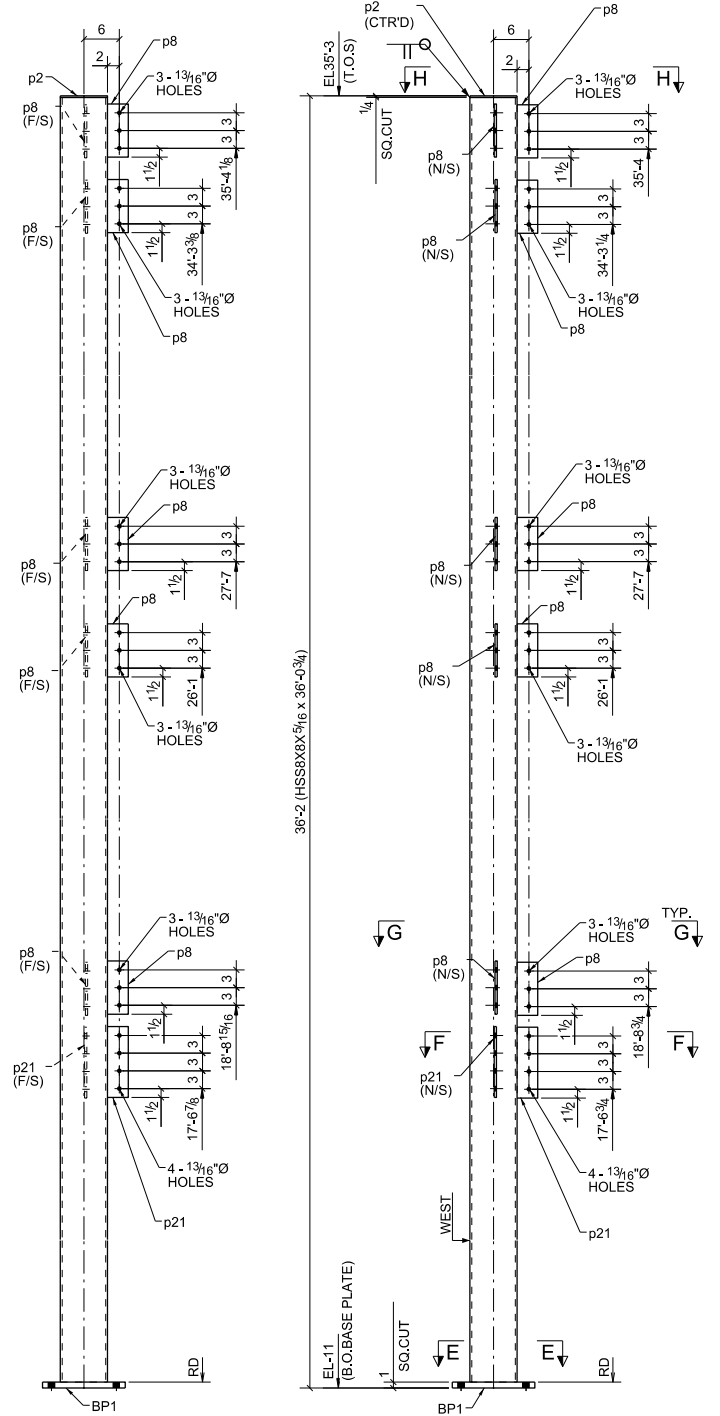
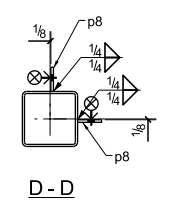
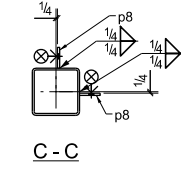
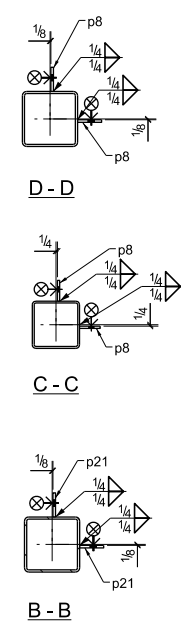
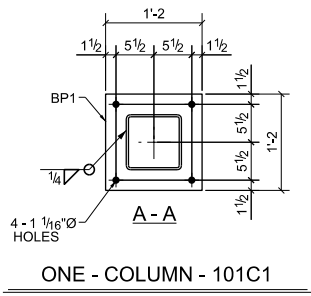
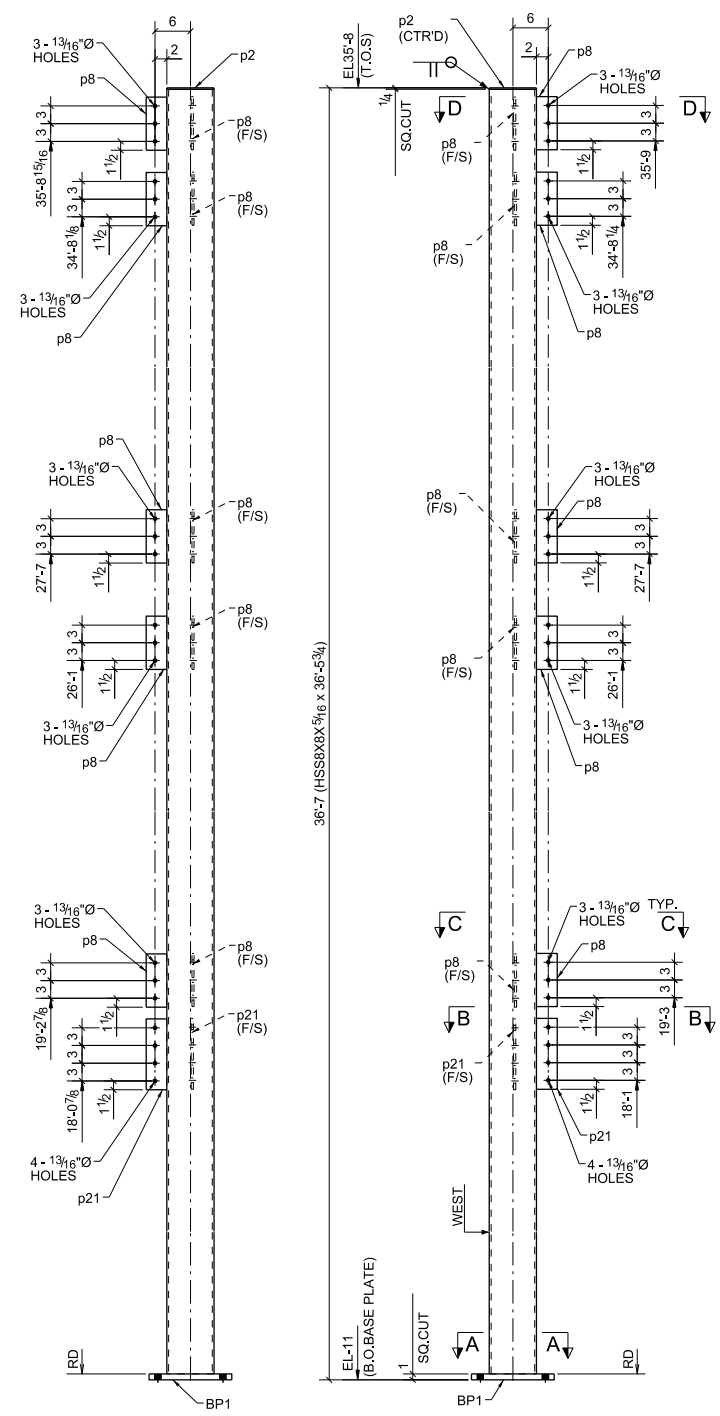
MARK	QTY	DESCRIPTION	LENGTH	WEIGHT	REMARKS
101C1	1	COLUMN			SQ-2
101C1	1	HSS8X8X5/16	36'-5 3/4"	1088	A500-GR.B
BP1	1	PL1"X14"	1'-2"	56	A36
p2	1	FL1/4"X8"	0'-8"	5	A36
p8	10	FL3/8"X3 1/2"	0'-9"	34	A36
p21	2	FL3/8"X3 1/2"	1'-0"	9	A36
101C2	1	COLUMN			SQ-2
101C2	1	HSS8X8X5/16	36'-0 3/4"	1075	A500-GR.B
BP1	1	PL1"X14"	1'-2"	56	A36
p2	1	FL1/4"X8"	0'-8"	5	A36
p8	10	FL3/8"X3 1/2"	0'-9"	34	A36
p21	2	FL3/8"X3 1/2"	1'-0"	9	A36
TOTAL WEIGHT THIS DRAWING				2368	

PROJECT PHASING				
Erection	Total	Phase	1	5
101C1	1	1	-	-
101C2	1	1	-	-

Total Qty.	Unit Qty.	Bolt Size & Length
48	48	BOLT 3/4" Ø A325SC 0'-2"

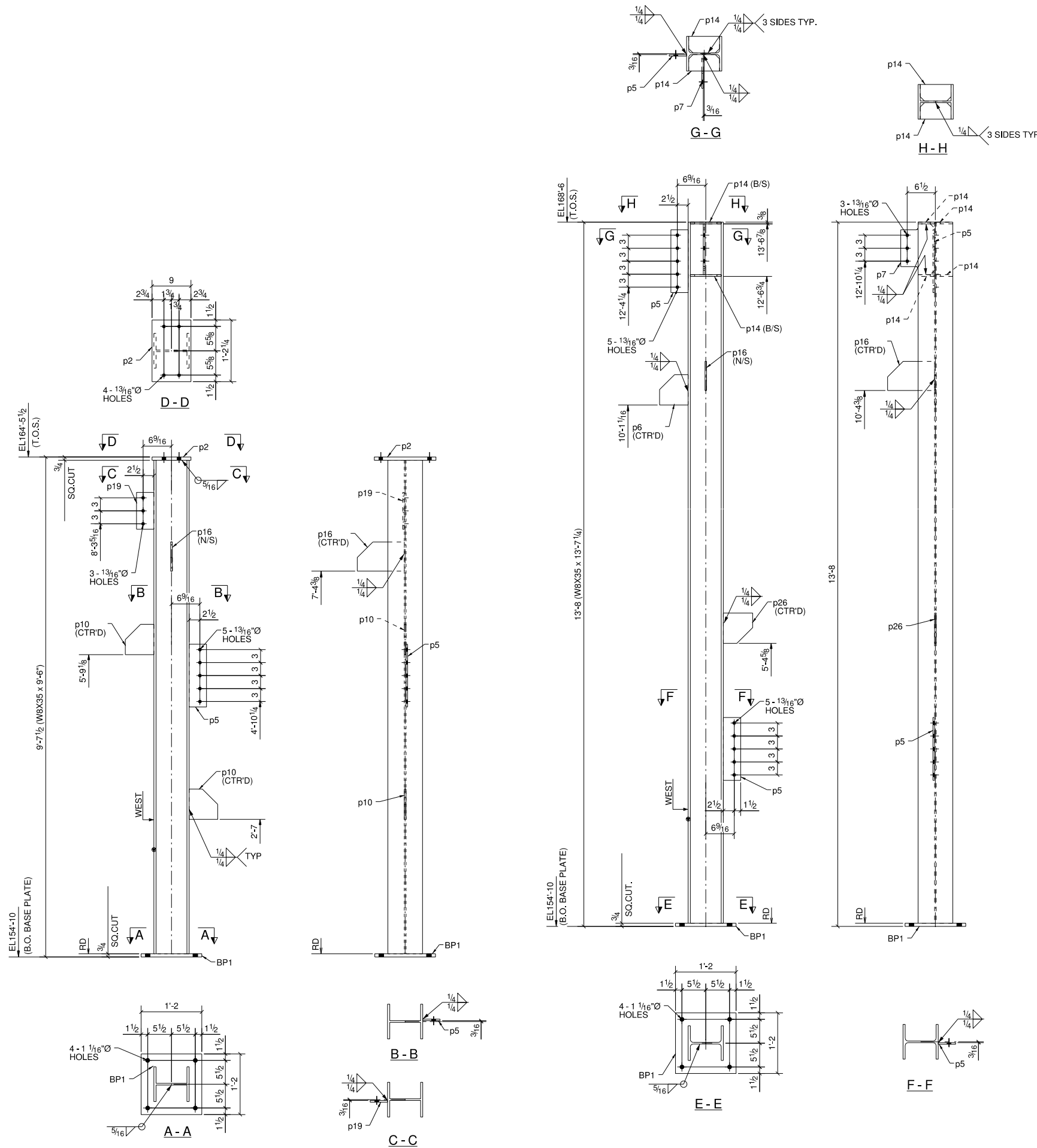
PAINT NOTE:
 PAINT: ONE SHOP COAT OF STANDARD GRAY PRIMER
 PREP: SSPC-SP2

01/27/2015 FOR FABRICATION PRINT RECORD							
DATE	APP.	SHOP	FIELD	DIST.	COORD.	F.C.	OFFICE
MATERIAL: A36 UNO HOLE SIZE: 13/16" Ø UNO BOLT GRADE: A325-N UNO MINIMUM WELD: 3/16" ELECTRODE: E-70XX							
Simsona Corp. 2275 Research Boulevard, Suite 500, Rockville, MD 20850 Office: 301-774-0880 Email: raj@simsona.com							
ARCH. _____ ENGR. _____ CONTR. _____				JOB NAME & LOCATION: Mr. Tire, Auto Service Centers.			
DRAWN BY: VV 01/27/2015 CHECKED BY: MSB 01/27/2015						JOB: 14-116 SHEET: 101	
COLUMN MODIFIED DATE: 01/27/2015 LAST PLOT DATE: 01/27/2015 CAD FILENAME: 101							



BILL OF MATERIAL

MARK	QTY	DESCRIPTION	LENGTH	WEIGHT	REMARKS
4C1	1	COLUMN			SQ-2
4C1	1	W8X35	9'-6"	333	A992
BP1	1	PL3/4"X14"	1'-2"	42	A36
p2	1	FL3/8"X9"	1'-2 1/4"	27	A36
p5	1	FL3/8"X4"	1'-2 1/2"	6	A36
p10	2	PL3/8"X6 5/8"	0'-7"	9	A36
p16	1	PL3/8"X6 3/4"	0'-10 7/8"	7	A36
p19	1	FL3/8"X4"	0'-8 1/2"	4	A36
4C2	1	COLUMN			SQ-2
4C2	1	W8X35	13'-7 1/4"	477	A992
BP1	1	PL3/4"X14"	1'-2"	42	A36
p5	2	FL3/8"X4"	1'-2 1/2"	12	A36
p6	1	PL3/8"X6 5/8"	0'-7"	4	A36
p7	1	PL3/8"X7 13/16"	0'-11 3/4"	8	A36
p14	4	PL3/8"X3 13/16"	0'-7 1/8"	11	A36
p16	1	PL3/8"X6 3/4"	0'-10 7/8"	7	A36
p26	1	FL3/8"X6 3/4"	0'-7"	4	A36
TOTAL WEIGHT THIS DRAWING				993	



ONE - COLUMN - 4C1

ONE - COLUMN - 4C2

GENERAL NOTES:-

- PREP.: SSSP-SP2
- FINISH: SHOP PRIMER
- WELD: 70 SERIES WIRE
- BOLTS: 3/4 Ø U.N.O
- HOLES: 13/16 Ø U.N.O
- 0'-3" NO PAINT AROUND OPEN HOLES FOR SC BOLTS

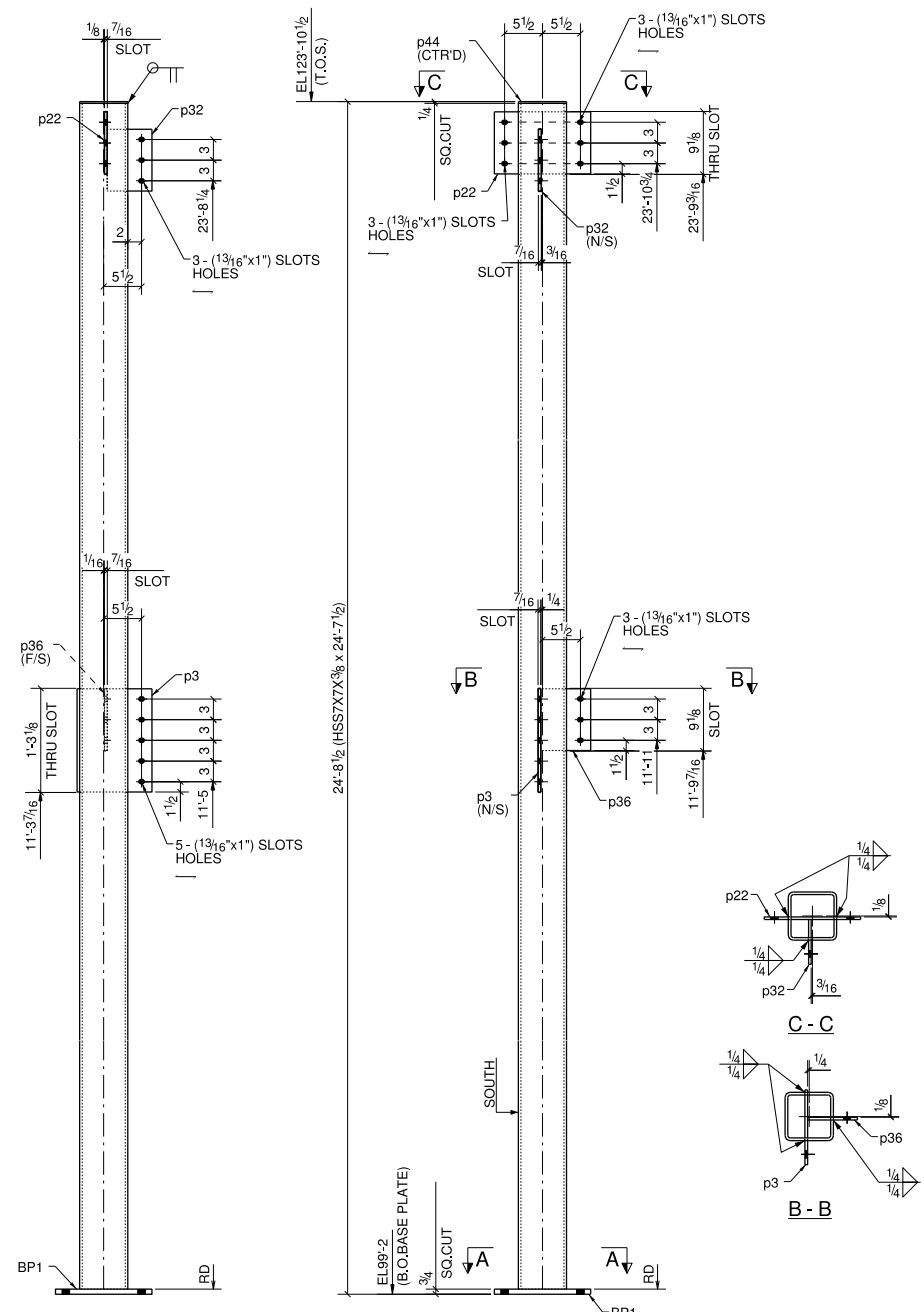
Total Qty.	Unit Qty.	Bolt Size & Length
4	4	BOLT 3/4 Ø A325N 0'-2 1/2"

FOR FABRICATION		09/10/14
NO.	REVISION	DATE

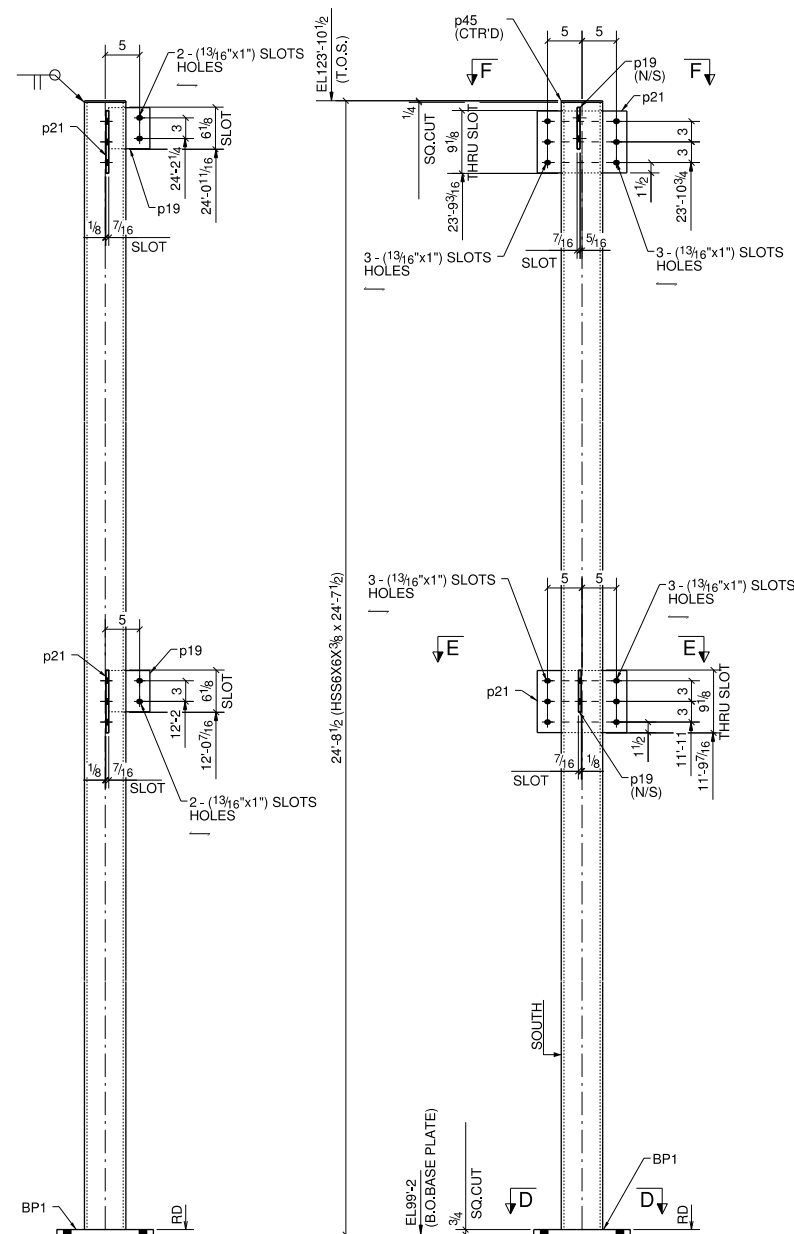
PROJECT NAME: BWI
 LOCATION:
 CONTR:

Simsona Corp.
 2275 Research Boulevard,
 Suite 500, Rockville, MD 20850
 Office: 301-774-0880
 Email: raj@simsona.com

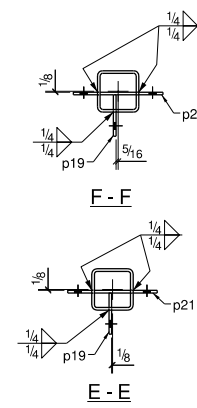
DRAWN BY: VV	DATE: 09/10/14	CHECKED BY: MSB
JOB NO. -	COLUMN	SHEET NO. 4



ONE - COLUMN - 6C1



ONE - COLUMN - 6C2



BILL OF MATERIAL

MARK	QTY	DESCRIPTION	LENGTH	WEIGHT	REMARKS
6C1	1	COLUMN			SQ-2
6C1	1	HSS7X7X3/8	24'-7 1/2"	752	A500-GR.B
BP1	1	PL3/4\"X14"	1'-2"	42	A36
p3	1	FL3/8\"X10 7/8"	1'-3"	17	A36
p22	1	FL3/8\"X9"	1'-2"	13	A36
p32	1	FL3/8\"X6 1/2"	0'-9"	6	A36
p36	1	FL3/8\"X7 1/4"	0'-9"	7	A36
p44	1	FL1/4\"X7"	0'-7"	3	A36
6C2	1	COLUMN			SQ-2
6C2	1	HSS6X6X3/8	24'-7 1/2"	635	A500-GR.B
BP1	1	PL3/4\"X14"	1'-2"	42	A36
p19	2	FL3/8\"X6"	0'-6"	8	A36
p21	2	FL3/8\"X9"	1'-1"	25	A36
p45	1	FL1/4\"X6"	0'-6"	3	A36
TOTAL WEIGHT THIS DRAWING				1553	

PROJECT PHASING		
MARK	QTY	PHASE
6C1	1	Phase 1
6C2	1	Phase 1

SEQUENCE : 1

Total Qty, Unit Qty, Bolt Size & Length

PAINT NOTE:-
 PAINT : ONE SHOP COAT OF RUST INHIBITIVE GREY PRIMER
 PREP : SSPC-SP2

11/19/14 FOR FABRICATION		PRINT RECORD		DATE		APP.		SHOP		FIELD		DIST.		COORD.		F.C.		OFFICE	
<small>ALL INFORMATION PROVIDED ON THESE DRAWINGS ARE PREPARED IN ACCORDANCE TO THE CONTRACT DOCUMENTS AND THE SPECIFICATIONS. ALL CLOUDED AREAS SHOWN ARE DUE TO LACK OF INFORMATION PROVIDED BY THE CONTRACT DOCUMENTS OR SPECIFICATIONS. BUT PREPARED WITH ALL THE INFORMATION AVAILABLE TO US. WE MUST HAVE THESE AREAS ANSWERED BY THE GENERAL CONTRACTOR, ARCHITECT, & ENGINEER, BEFORE WE CAN START FABRICATING ANY MATERIAL. PLEASE RESPOND WITH THIS INFORMATION BY MARKING UP OUR SHOP DRAWINGS.</small>																			
MATERIAL: A36 UNO				HOLE SIZE: 13/16" Ø UNO				BOLT GRADE: A325-N UNO				MINIMUM WELD: 3/16"				ELECTRODE: E-70XX			
										Simsona Corp. 2275 Research Boulevard, Suite 500, Rockville, MD 20850 Office: 301-774-0880 Email: raj@simsona.com									
ARCH:										JOB NAME & LOCATION: College Park Airport Operations Building									
ENGR:																			
CONTR.:																			
REF: VV 11/19/14										CHECKED BY: VT 11/19/14									
DRAWN BY: VV 11/19/14										JOB: 14-115									
SHEET TITLE: COLUMN										SHEET: 6									
MODIFIED DATE: 11/19/14										LAST PLOT DATE: 11/19/14									
CAD FILENAME: 6																			

Field Instructions

BILL OF MATERIAL

MARK	QTY	DESCRIPTION	LENGTH	WEIGHT	REMARKS
7C1	1	COLUMN			SQ-2
7C1	1	HSS6X6X3/8	11'-11 1/4"	308	A500-GR.B
BP1	1	PL3/4"X14"	1'-2"	42	A36
p11	1	PL3/8"X9 7/8"	1'-0"	13	A36
p39	1	PL3/8"X5 15/16"	0'-9"	6	A36
p45	1	FL1/4"X6"	0'-6"	3	A36
7C2	1	COLUMN			SQ-2
7C2	1	HSS7X7X3/8	24'-7 1/2"	752	A500-GR.B
BP1	1	PL3/4"X14"	1'-2"	42	A36
bp5	1	BPL3/8"X6 3/16"	0'-9"	6	A36
bp6	1	BPL3/8"X5 7/8"	0'-9"	6	A36
p1	1	PL3/8"X14"	1'-3"	20	A36
p22	1	FL3/8"X9"	1'-2"	13	A36
p38	1	PL3/8"X7 3/16"	0'-9"	7	A36
p44	1	FL1/4"X7"	0'-7"	3	A36
TOTAL WEIGHT THIS DRAWING				1220	

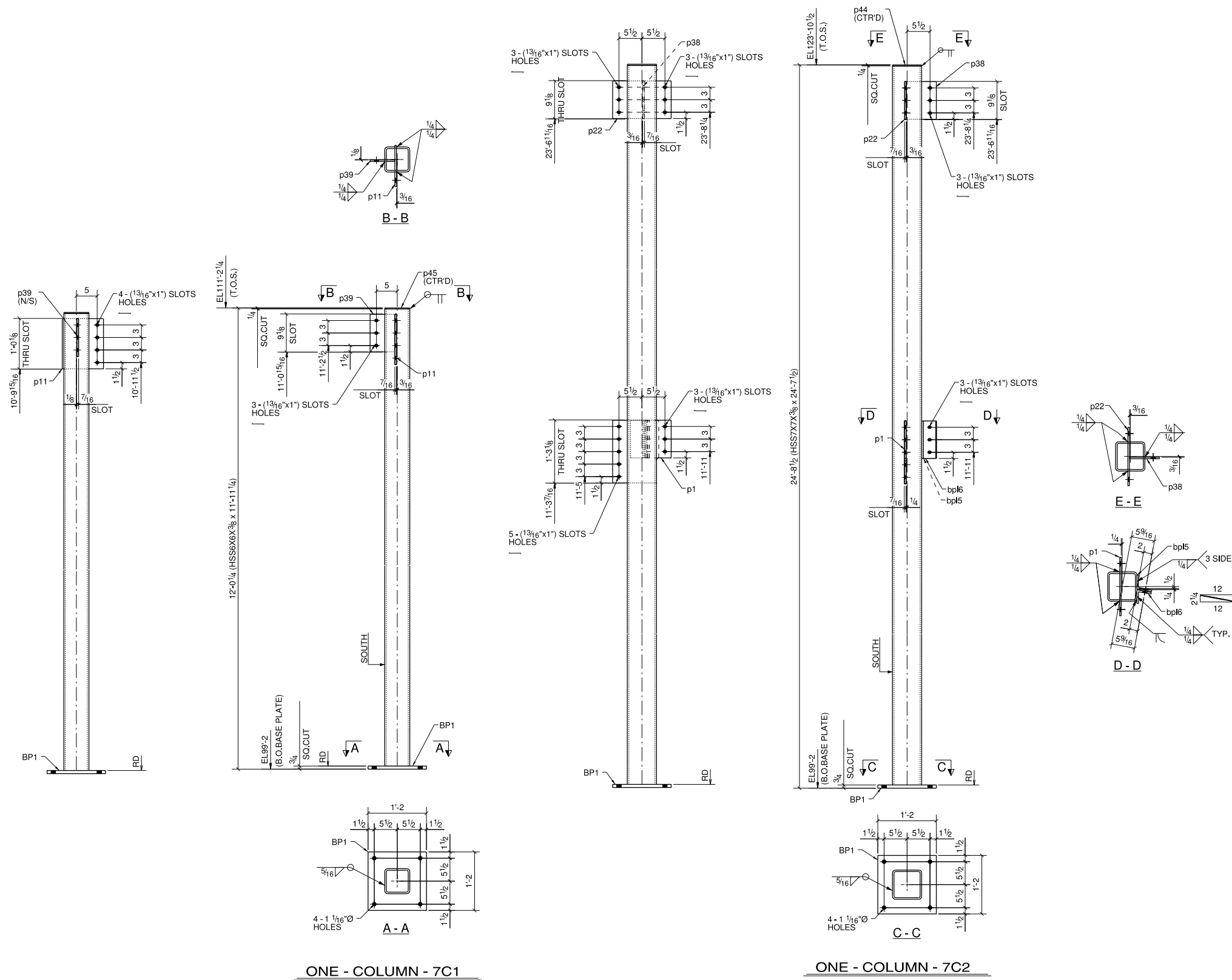
PROJECT PHASING		
MARK	QTY	PHASE
7C1	1	Phase 1
7C2	1	Phase 1

SEQUENCE : 1

Total Qty, Unit Qty, Bolt Size & Length

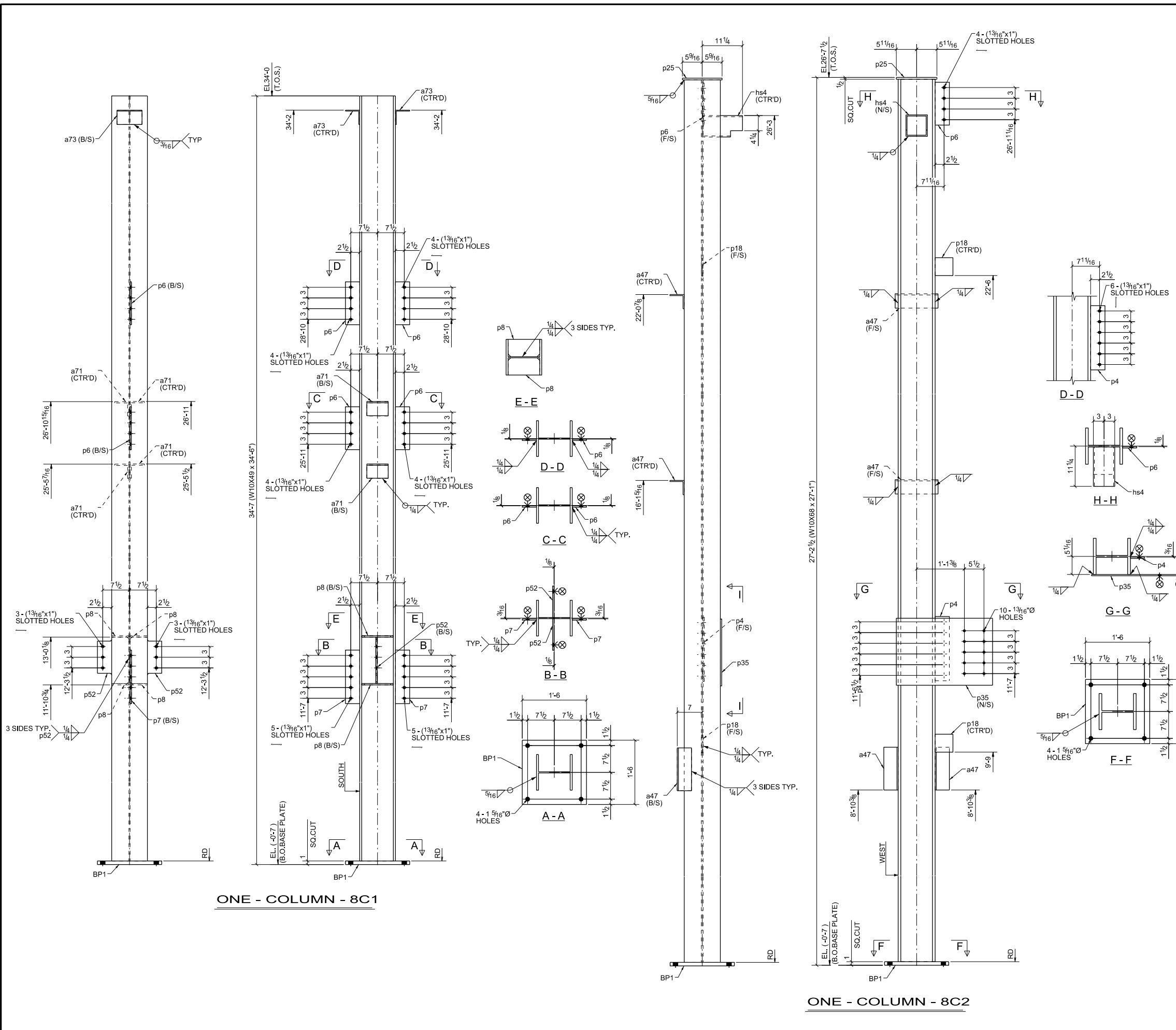
PAINT NOTE:-
 PAINT : ONE SHOP COAT OF RUST INHIBITIVE GREY PRIMER
 PREP : SSPC-SP2

11/19/14 FOR FABRICATION						
PRINT RECORD						
DATE	APP.	SHOP	FIELD	DIST.	COORD.	OFFICE
<small>ALL INFORMATION PROVIDED ON THESE DRAWINGS IS PREPARED IN ACCORDANCE TO THE CONTRACT DOCUMENTS AND THE SPECIFICATIONS. ALL CLOUDED AREAS SHOWN ARE DUE TO LACK OF INFORMATION PROVIDED BY THE CONTRACT DOCUMENTS OR SPECIFICATIONS. IF THE INFORMATION AVAILABLE TO US, WE MUST HAVE THESE AREAS ANSWERED BY THE GENERAL CONTRACTOR, ARCHITECT, & ENGINEER, BEFORE WE CAN START FABRICATING ANY MATERIAL. PLEASE RESPOND WITH THIS INFORMATION BY MARKING UP OUR SHOP DRAWINGS.</small>						
MATERIAL:	HOLE SIZE:	BOLT GRADE:	MINIMUM WELD:	ELECTRODE:		
A36 UNO	13/16" Ø UNO	A325-N UNO	3/16"	E-70XX		
SIMSONA Corp. 2275 Research Boulevard, Suite 500, Rockville, MD 20850 Office: 301-774-0880 Email: raj@simsona.com						
ARCH. ENGR. CONTR.				JOB NAME & LOCATION: College Park Airport Operations Building		
REF. DRAWN BY: VV 11/19/14				CHECKED BY: VT 11/19/14		JOB: 14-115
SHEET TITLE: COLUMN				SHEET: 7		
MODIFIED DATE: 11/19/14 LAST PLOT DATE: 11/19/14 CAD FILENAME: 7						



ONE - COLUMN - 7C1

ONE - COLUMN - 7C2



BILL OF MATERIAL

MARK	QTY	DESCRIPTION	LENGTH	WEIGHT	REMARKS
8C1	1	COLUMN			SQ-2
8C1	1	W10X49	34'-6"	1691	A992
BP1	1	PL1"x18"	1'-6"	92	A36
a71	4	L4X4X3/8	0'-6"	19	A36
a73	2	L4X4X1/4	0'-7"	8	A36
p6	4	FL3/8"x4"	1'-0"	20	A36
p7	2	FL3/8"x4"	1'-3"	13	A36
p8	4	PL3/8"x4 7/8"	0'-8 7/8"	18	A36
p52	2	PL3/8"x8 13/16"	1'-1"	21	A36
8C2	1	COLUMN			SQ-2
8C2	1	W10X68	27'-1"	1834	A992
BP1	1	PL1"x18"	1'-6"	92	A36
a47	4	L4X4X5/16	1'-0"	33	A36
hs4	1	HSS6X6X5/16	0'-11"	20	A500-GR.B
p4	1	FL3/8"x4"	1'-6"	8	A36
p6	1	FL3/8"x4"	1'-0"	5	A36
p18	2	FL3/8"x5"	0'-5"	5	A36
p25	1	PL1/2"x11 1/8"	0'-11 3/8"	18	A36
p35	1	PL3/8"x18 3/4"	2'-3"	54	A36
		TOTAL WEIGHT THIS DRAWING		3951	

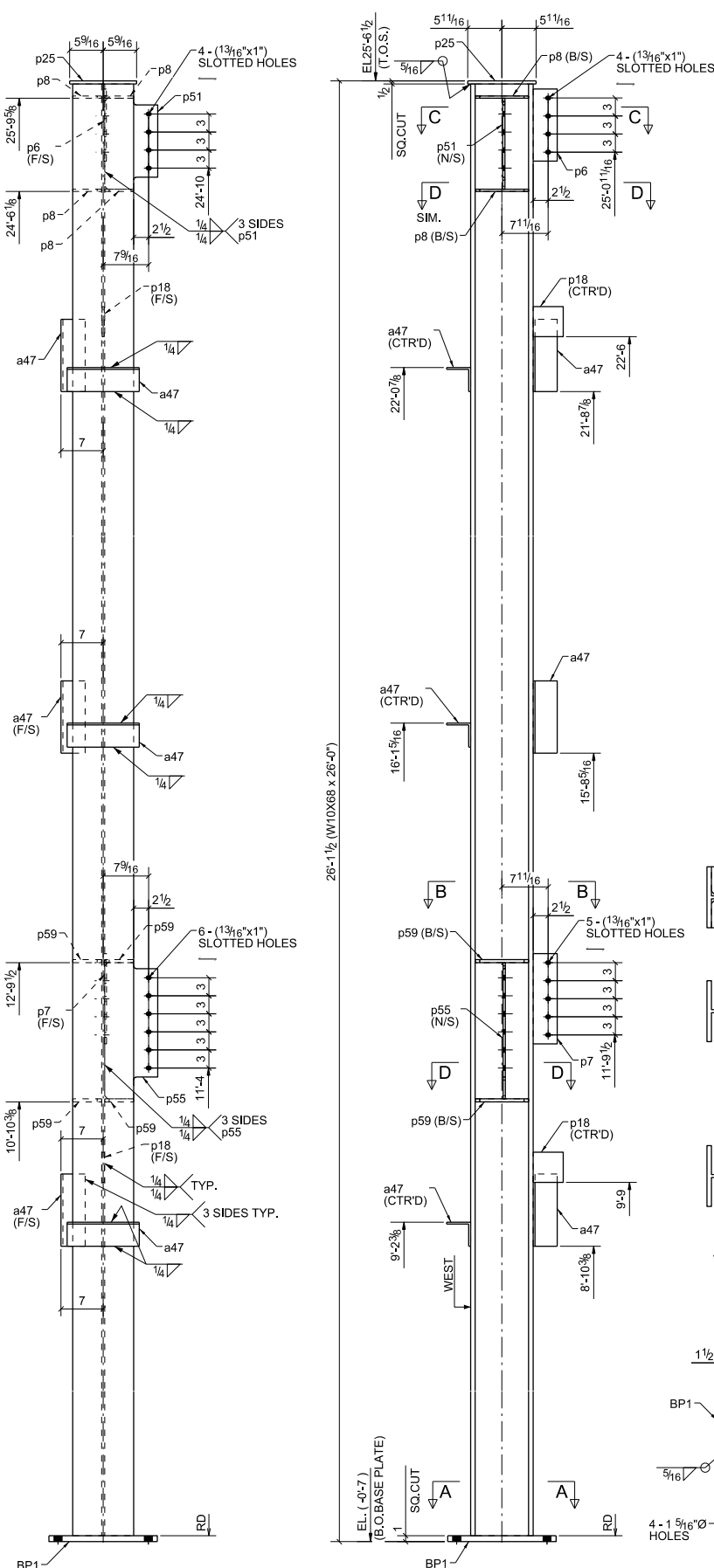
PROJECT PHASING

Erection Mark	Total Qty.	Phase		
		#1	#2	#5
8C1	1	1	-	-
8C2	1	1	-	-

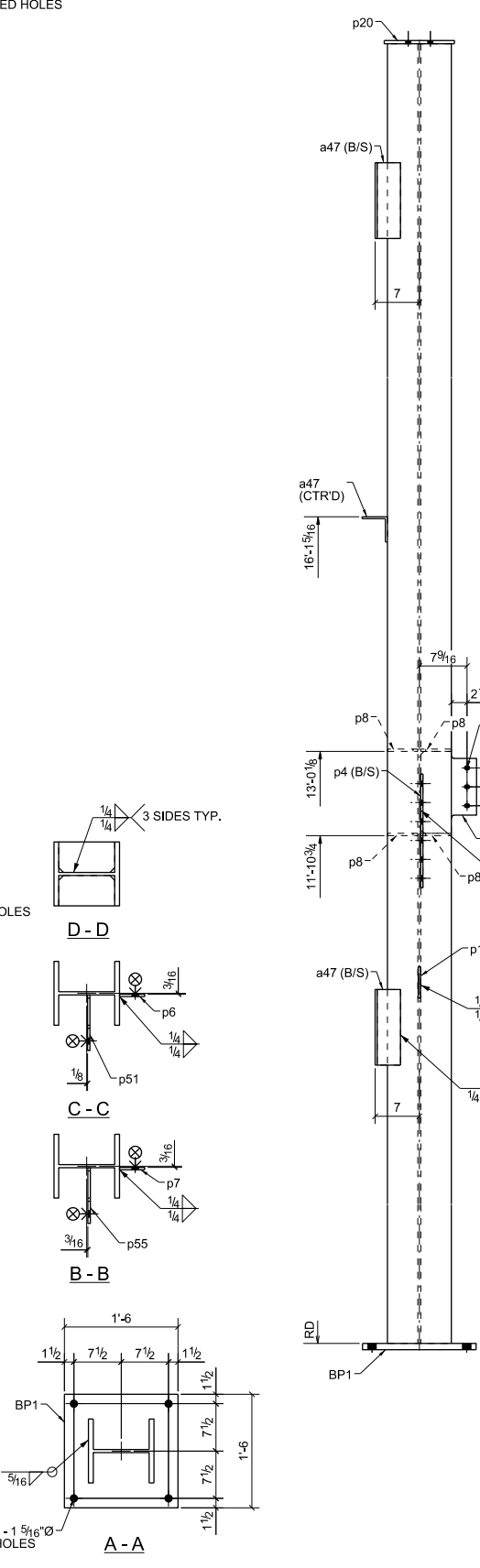
Total Qty./Unit Qty. Bolt Size & Length

PAINT NOTE:-
 PAINT : ONE SHOP COAT OF GREY PRIMER
 PREP : SSPC-SP2

02/27/2015 FOR FABRICATION		PRINT RECORD		<small>ALL INFORMATION PROVIDED ON THESE DRAWINGS ARE PREPARED IN ACCORDANCE TO THE CONTRACT DOCUMENTS AND THE SPECIFICATIONS. ALL CLOTTED AREAS SHOWN ARE DUE TO LACK OF INFORMATION PROVIDED BY THE CONTRACT DOCUMENTS OR SPECIFICATIONS, BUT PREPARED WITH ALL THE INFORMATION AVAILABLE TO US. WE MUST HAVE THESE AREAS ANSWERED BY THE GENERAL CONTRACTOR, ARCHITECT & ENGINEER BEFORE WE CAN START FABRICATING ANY MATERIAL. PLEASE RESPOND WITH THIS INFORMATION BY MARKING UP OUR SHOP DRAWINGS.</small>	
DATE	APP.	SHOP	FIELD	DIST.	F.C.
MATERIAL: A36 UNO		HOLE SIZE: 13/16" Ø UNO		BOLT GRADE: A325-N UNO	
MINIMUM WELD: 3/16"		ELECTRODE: E-70XX		Simsona Corp. 2275 Research Boulevard, Suite 500, Rockville, MD 20850 Office: 301-774-0880 Email: raj@simsona.com	
ARCH. ENGR. CONTR.			JOB NAME & LOCATION: Excalibur Professional Building		
REF:			JOB: 15-102		
DRAWN BY: KP 02/27/2015 CHECKED BY: MSB 02/27/2015			SHEET: 8		
COLUMN					
MODIFIED DATE: 02/27/2015		LAST PLOT DATE: 02/27/2015		CAD FILENAME: 8	

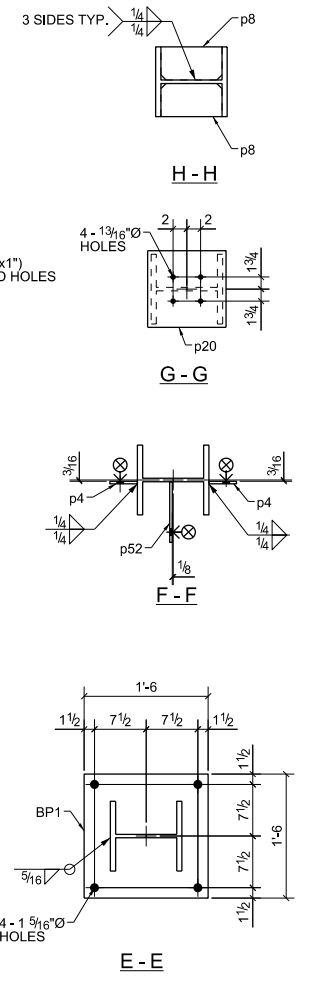


ONE - COLUMN - 3C1



3 - COLUMNS - 3C2

PAINT NOTE:-
 PAINT : ONE SHOP COAT OF GREY PRIMER
 PREP : SSPC-SP2



BILL OF MATERIAL

MARK	QTY	DESCRIPTION	LENGTH	WEIGHT	REMARKS
3C1	1	COLUMN			SQ-2
3C1	1	W10X68	26'-0"	1761	A992
BP1	1	PL1\"/>			

MARK	QTY	DESCRIPTION	LENGTH	WEIGHT	REMARKS
3C2	3	COLUMNS			SQ-2
3C2	3	W10X68	24'-3 3/4"	4940	A992
BP1	3	PL1\"/>			

TOTAL WEIGHT THIS DRAWING 7549

PROJECT PHASING				
Erection Mark	Total Qty.	Phase #1	Phase #2	Phase #5
3C1	1	1	-	-
3C2	3	3	-	-

Total Qty.	Unit Qty.	Bolt Size & Length
12	4	BOLT 3/4\"/>

FOR FABRICATION
 PRINT RECORD

DATE	APP.	SHOP	FIELD	DIST.	COORD.	F.C.	OFFICE
02/27/2015							

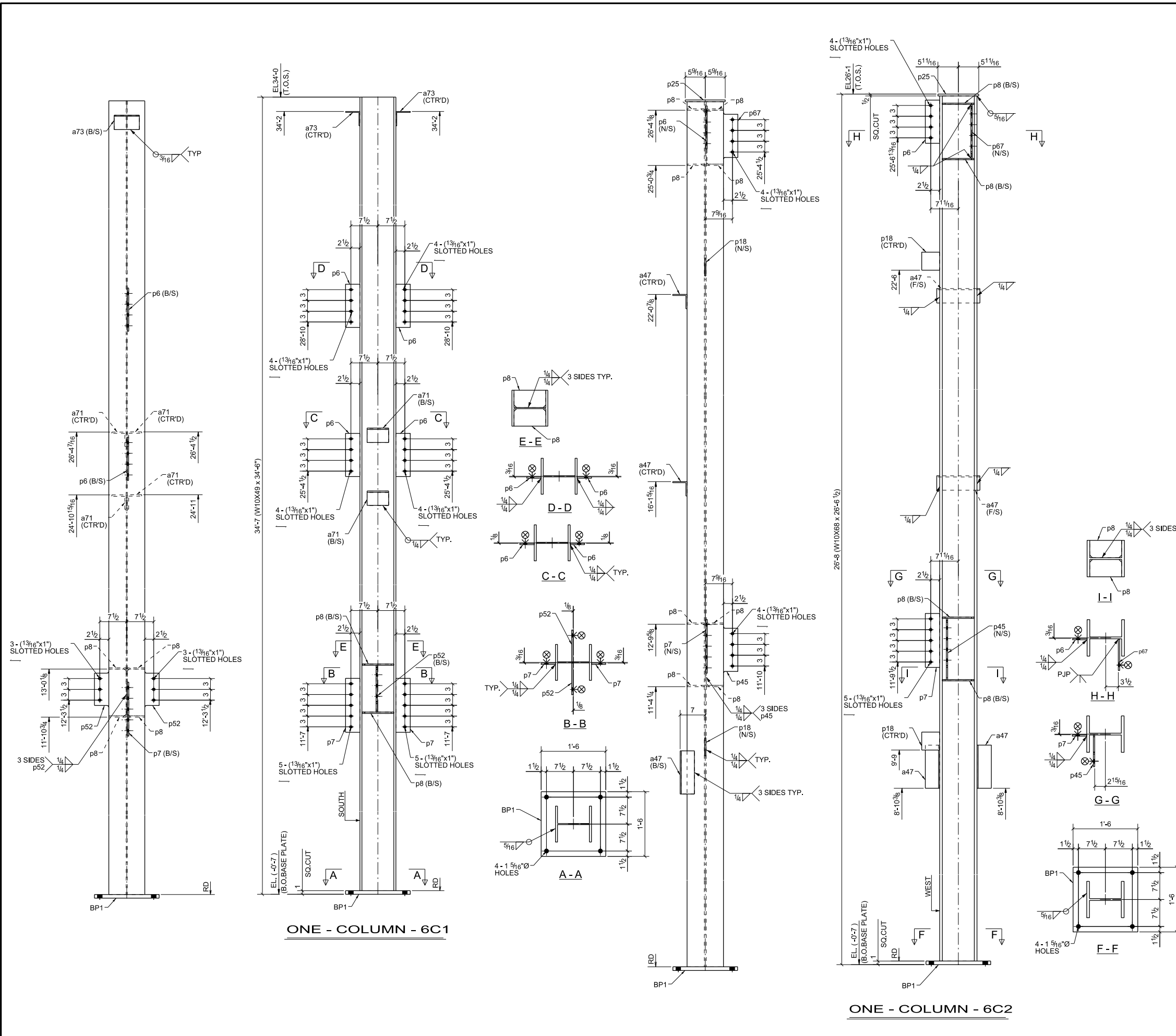
MATERIAL: A36 UNO HOLE SIZE: 13/16\"/>



Simsona Corp.
 2275 Research Boulevard,
 Suite 500, Rockville, MD 20850
 Office: 301-774-0880
 Email: raj@simsona.com



ARCH. _____ JOB NAME & LOCATION: Excalbur Professional Building
 ENGR. _____
 CONTR. _____
 REF. _____ JOB: 15-102
 DRAWN BY: KP 02/27/2015 CHECKED BY: MSB 02/27/2015 SHEET: 3
 SHEET TITLE: COLUMN
 MODIFIED DATE: 02/27/2015 LAST PLOT DATE: 02/27/2015 CAD FILENAME: 3



BILL OF MATERIAL

MARK	QTY	DESCRIPTION	LENGTH	WEIGHT	REMARKS
6C1	1	COLUMN			SQ-2
6C1	1	W10X49	34'-6"	1691	A992
BP1	1	PL1"x18"	1'-6"	92	A36
a71	4	L4X4X3/8	0'-6"	19	A36
a73	2	L4X4X1/4	0'-7"	8	A36
p6	4	FL3/8"x4"	1'-0"	20	A36
p7	2	FL3/8"x4"	1'-3"	13	A36
p8	4	PL3/8"x4 7/8"	0'-8 7/8"	18	A36
p52	2	PL3/8"x8 13/16"	1'-1"	21	A36
6C2	1	COLUMN			SQ-2
6C2	1	W10X68	26'-6 1/2"	1797	A992
BP1	1	PL1"x18"	1'-6"	92	A36
a47	4	L4X4X5/16	1'-0"	33	A36
p6	1	FL3/8"x4"	1'-0"	5	A36
p7	1	FL3/8"x4"	1'-3"	6	A36
p8	8	PL3/8"x4 13/16"	0'-8 7/8"	36	A36
p18	2	FL3/8"x5"	0'-5"	5	A36
p25	1	PL1/2"x11 1/8"	0'-11 3/8"	18	A36
p45	1	PL3/8"x8 13/16"	1'-5"	14	A36
p67	1	PL3/8"x8 13/16"	1'-3"	13	A36
TOTAL WEIGHT THIS DRAWING				3901	

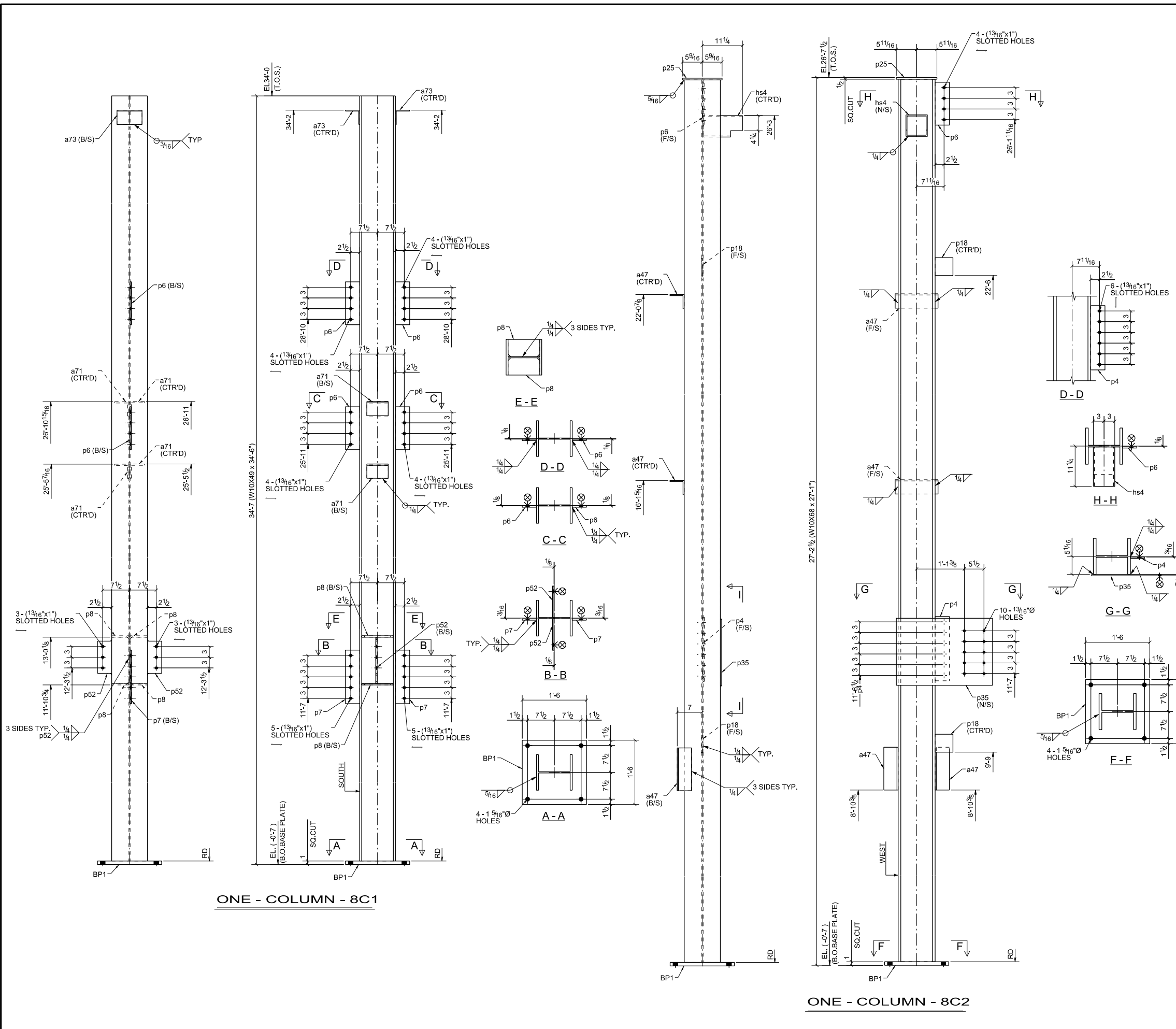
PROJECT PHASING

Erection Mark	Total Qty.	Phase		
		#1	#2	#5
6C1	1	1	-	-
6C2	1	1	-	-

Total Qty./Unit Qty.		Bolt Size & Length	

PAINT NOTE:-
 PAINT : ONE SHOP COAT OF GREY PRIMER
 PREP : SSPC-SP2

02/27/2015 FOR FABRICATION PRINT RECORD		ALL INFORMATION PROVIDED ON THESE DRAWINGS ARE PREPARED IN ACCORDANCE TO THE CONTRACT DOCUMENTS AND THE SPECIFICATIONS. ALL CLOTTED AREAS SHOWN ARE DUE TO LACK OF INFORMATION PROVIDED BY THE GENERAL CONTRACTOR, ARCHITECT & ENGINEER. BEFORE WE CAN START FABRICATING ANY MATERIAL, PLEASE RESPOND WITH THIS INFORMATION BY MARKING UP OUR SHOP DRAWINGS.					
DATE	APP.	SHOP	FIELD	DIST.	COORD.	F.C.	OFFICE
MATERIAL: A36 UNO		HOLE SIZE: 13/16" Ø UNO		BOLT GRADE: A325-N UNO		MINIMUM WELD: 3/16"	
						ELECTRODE: E-70XX	
				Simsona Corp. 2275 Research Boulevard, Suite 500, Rockville, MD 20850 Office: 301-774-0880 Email: raj@simsona.com			
ARCH.		JOB NAME & LOCATION:					
ENGR.		Excalibur Professional Building					
CONTR.							
REF:		JOB:		15-102			
DRAWN BY: KP		02/27/2015		CHECKED BY: MSB		02/27/2015	
SHEET TITLE:		COLUMN		SHEET:		6	
MODIFIED DATE: 02/27/2015		LAST PLOT DATE: 02/27/2015		CAD FILENAME: 6			



BILL OF MATERIAL

MARK	QTY	DESCRIPTION	LENGTH	WEIGHT	REMARKS
8C1	1	COLUMN			SQ-2
8C1	1	W10X49	34'-6"	1691	A992
BP1	1	PL1"x18"	1'-6"	92	A36
a71	4	L4X4X3/8	0'-6"	19	A36
a73	2	L4X4X1/4	0'-7"	8	A36
p6	4	FL3/8"x4"	1'-0"	20	A36
p7	2	FL3/8"x4"	1'-3"	13	A36
p8	4	PL3/8"x4 7/8"	0'-8 7/8"	18	A36
p52	2	PL3/8"x8 13/16"	1'-1"	21	A36
8C2	1	COLUMN			SQ-2
8C2	1	W10X68	27'-1"	1834	A992
BP1	1	PL1"x18"	1'-6"	92	A36
a47	4	L4X4X5/16	1'-0"	33	A36
hs4	1	HSS6X6X5/16	0'-11"	20	A500-GR.B
p4	1	FL3/8"x4"	1'-6"	8	A36
p6	1	FL3/8"x4"	1'-0"	5	A36
p18	2	FL3/8"x5"	0'-5"	5	A36
p25	1	PL1/2"x11 1/8"	0'-11 3/8"	18	A36
p35	1	PL3/8"x18 3/4"	2'-3"	54	A36
TOTAL WEIGHT THIS DRAWING				3951	

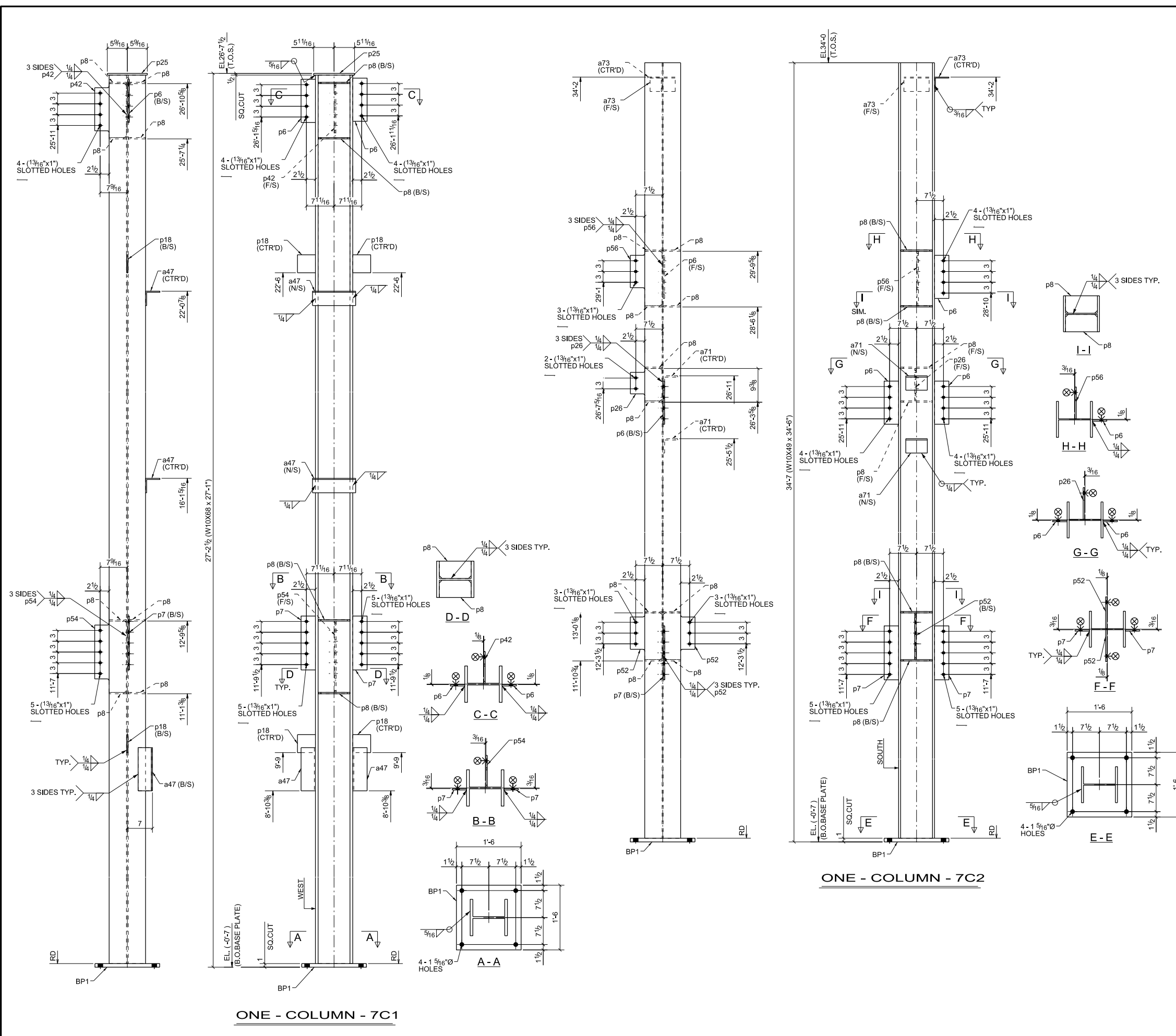
PROJECT PHASING

Erection Mark	Total Qty.	Phase		
		#1	#2	#5
8C1	1	1	-	-
8C2	1	1	-	-

Total Qty./Unit Qty. Bolt Size & Length

PAINT NOTE:-
 PAINT : ONE SHOP COAT OF GREY PRIMER
 PREP : SSPC-SP2

02/27/2015 FOR FABRICATION PRINT RECORD		ALL INFORMATION PROVIDED ON THESE DRAWINGS ARE PREPARED IN ACCORDANCE TO THE CONTRACT DOCUMENTS AND THE SPECIFICATIONS. ALL CLOTTED AREAS SHOWN ARE DUE TO LACK OF INFORMATION PROVIDED BY THE CONTRACT DOCUMENTS OR SPECIFICATIONS. BUT PREPARED WITH ALL THE INFORMATION AVAILABLE TO US. WE MUST HAVE THESE AREAS ANSWERED BY THE GENERAL CONTRACTOR, ARCHITECT & ENGINEER BEFORE WE CAN START FABRICATING ANY MATERIAL. PLEASE RESPOND WITH THIS INFORMATION BY MARKING UP OUR SHOP DRAWINGS.					
DATE	APP.	SHOP	FIELD	DIST.	COORD.	F.C.	OFFICE
MATERIAL: A36 UNO		HOLE SIZE: 13/16" Ø UNO		BOLT GRADE: A325-N UNO		MINIMUM WELD: 3/16"	
ELECTRODE: E-70XX		Simsona Corp. 2275 Research Boulevard, Suite 500, Rockville, MD 20850 Office: 301-774-0880 Email: raj@simsona.com					
ARCH.:				JOB NAME & LOCATION:			
ENGR.:				Excaltur Professional Building			
CONTR.:							
REF.:				JOB: 15-102			
DRAWN BY: KP		02/27/2015		CHECKED BY: MSB		02/27/2015	
SHEET TITLE		COLUMN		SHEET:		8	
MODIFIED DATE: 02/27/2015		LAST PLOT DATE: 02/27/2015		CAD FILENAME: 8			



ONE - COLUMN - 7C1

ONE - COLUMN - 7C2

BILL OF MATERIAL

MARK	QTY	DESCRIPTION	LENGTH	WEIGHT	REMARKS
7C1	1	COLUMN			SQ-2
7C1	1	W10X68	27'-1"	1834	A992
BP1	1	PL1"x18"	1'-6"	92	A36
a47	4	L4X4X5/16	1'-0"	33	A36
p6	2	FL3/8"x4"	1'-0"	10	A36
p7	2	FL3/8"x4"	1'-3"	13	A36
p8	8	PL3/8"x4 13/16"	0'-8 7/8"	36	A36
p18	4	FL3/8"x5"	0'-5"	11	A36
p25	1	PL1/2"x11 1/8"	0'-11 3/8"	18	A36
p42	1	PL3/8"x8 13/16"	1'-3"	13	A36
p54	1	PL3/8"x8 13/16"	1'-7 7/8"	17	A36
7C2	1	COLUMN			SQ-2
7C2	1	W10X49	34'-6"	1691	A992
BP1	1	PL1"x18"	1'-6"	92	A36
a71	2	L4X4X3/8	0'-6"	10	A36
a73	2	L4X4X1/4	0'-7"	8	A36
p6	3	FL3/8"x4"	1'-0"	15	A36
p7	2	FL3/8"x4"	1'-3"	13	A36
p8	10	PL3/8"x4 7/8"	0'-8 7/8"	45	A36
p26	1	PL3/8"x8 13/16"	0'-9"	7	A36
p52	2	PL3/8"x8 13/16"	1'-1"	21	A36
p56	1	PL3/8"x8 7/8"	1'-3 1/8"	12	A36
TOTAL WEIGHT THIS DRAWING				3988	

PROJECT PHASING

Erection Mark	Total Qty.	Phase #1	Phase #2	Phase #5
7C1	1	1	-	-
7C2	1	1	-	-

Total Qty./Unit Qty. Bolt Size & Length

PAINT NOTE:-
 PAINT : ONE SHOP COAT OF GREY PRIMER
 PREP : SSPC-SP2

FOR FABRICATION

DATE: 02/27/2015

DATE APP. SHOP FIELD DIST. COORD. F.C. OFFICE

MATERIAL: A36 UNO HOLE SIZE: 13/16" Ø UNO BOLT GRADE: A325-N UNO MINIMUM WELD: 3/16" ELECTRODE: E-70XX

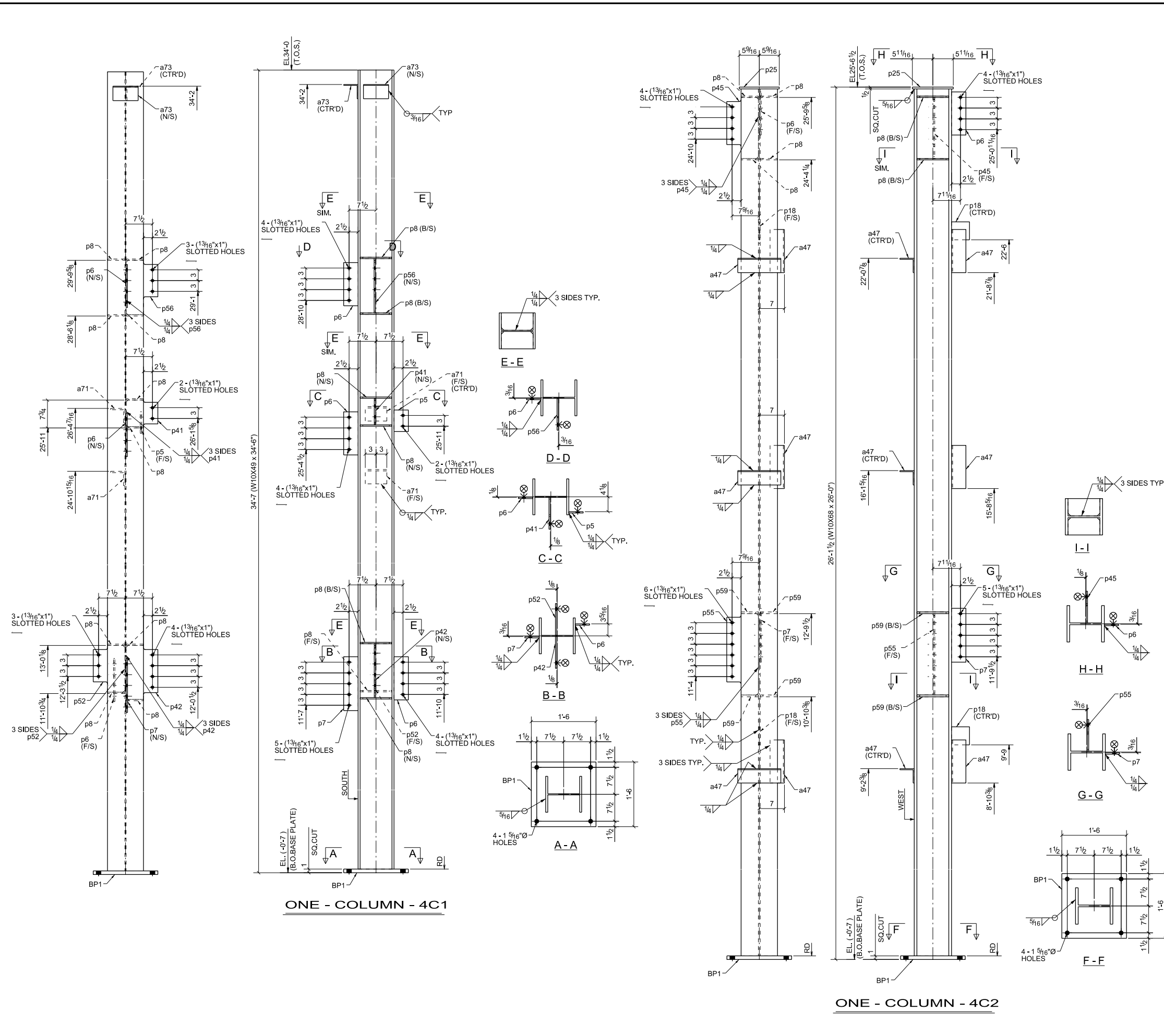
SIMSONA ENGINEERING SERVICES
 Simsona Corp.
 2275 Research Boulevard,
 Suite 500, Rockville, MD 20850
 Office: 301-774-0880
 Email: raj@simsona.com

ARCH. ENGR. CONTR. REF. DRAWN BY: KP 02/27/2015 CHECKED BY: MSB 02/27/2015 SHEET TITLE: COLUMN

JOB NAME & LOCATION: Excalibur Professional Building

JOB: 15-102 SHEET: 7

MODIFIED DATE: 02/27/2015 LAST PLOT DATE: 02/27/2015 CAD FILENAME: 7



BILL OF MATERIAL

MARK	QTY	DESCRIPTION	LENGTH	WEIGHT	REMARKS
4C1	1	COLUMN			SQ-2
4C1	1	W10X49	34'-6"	1691	A992
BP1	1	PL1"x18"	1'-6"	92	A36
a71	2	L4X4X3/8	0'-6"	10	A36
a73	2	L4X4X1/4	0'-7"	8	A36
p5	1	FL3/8"x4"	0'-6"	3	A36
p6	3	FL3/8"x4"	1'-0"	15	A36
p7	1	FL3/8"x4"	1'-3"	6	A36
p8	10	PL3/8"x4 7/8"	0'-8 7/8"	45	A36
p41	1	PL3/8"x7 3/8"	0'-8 7/8"	6	A36
p42	1	PL3/8"x8 7/8"	1'-3"	13	A36
p52	1	PL3/8"x8 13/16"	1'-1"	11	A36
p56	1	PL3/8"x8 7/8"	1'-3 1/8"	12	A36
4C2	1	COLUMN			SQ-2
4C2	1	W10X68	26'-0"	1761	A992
BP1	1	PL1"x18"	1'-6"	92	A36
a47	6	L4X4X5/16	1'-0"	49	A36
p6	1	FL3/8"x4"	1'-0"	5	A36
p7	1	FL3/8"x4"	1'-3"	6	A36
p8	4	PL3/8"x4 13/16"	0'-8 7/8"	18	A36
p18	2	FL3/8"x5"	0'-5"	5	A36
p25	1	PL1/2"x11 1/8"	0'-11 3/8"	18	A36
p45	1	PL3/8"x8 13/16"	1'-5"	14	A36
p55	1	PL3/8"x8 13/16"	1'-10 5/8"	19	A36
p59	4	PL1/2"x4 13/16"	0'-8 7/8"	24	A36
TOTAL WEIGHT THIS DRAWING				3922	

PROJECT PHASING

Erection Mark	Total Qty.	Phase		
		#1	#2	#5
4C1	1	1	-	-
4C2	1	1	-	-

Total Qty./Unit Qty. Bolt Size & Length

PAINT NOTE:-
 PAINT : ONE SHOP COAT OF GREY PRIMER
 PREP : SSPC-SP2

02/27/2015 FOR FABRICATION		PRINT RECORD		ALL INFORMATION PROVIDED ON THESE DRAWINGS ARE PREPARED IN ACCORDANCE TO THE CONTRACT DOCUMENTS AND THE SPECIFICATIONS. ALL CLOTTED AREAS SHOWN ARE DUE TO LACK OF INFORMATION PROVIDED BY THE CONTRACT DOCUMENTS OR SPECIFICATIONS, BUT PREPARED WITH ALL THE INFORMATION AVAILABLE TO US. WE MUST HAVE THESE AREAS ANSWERED BY THE GENERAL CONTRACTOR, ARCHITECT & ENGINEER, BEFORE WE CAN START FABRICATING ANY MATERIAL. PLEASE RESPOND WITH THIS INFORMATION BY MARKING UP OUR SHOP DRAWINGS.		
DATE	APP.	SHOP	FIELD	DIST.	F.C.	OFFICE
MATERIAL: A36 UNO		HOLE SIZE: 13/16" Ø UNO		BOLT GRADE: A325-N UNO		MINIMUM WELD: 3/16"
ELECTRODE: E-70XX		<p>Simsona Corp. 2275 Research Boulevard, Suite 500, Rockville, MD 20850 Office: 301-774-0880 Email: raj@simsona.com</p>				
ARCH.:		JOB NAME & LOCATION:				
ENGR.:		Excaltur Professional Building				
CONTR.:						
REF.:		JOB: 15-102				
DRAWN BY: KP		02/27/2015		CHECKED BY: MSB 02/27/2015		
SHEET TITLE: COLUMN		LAST PLOT DATE: 02/27/2015		CAD FILENAME: 4		