

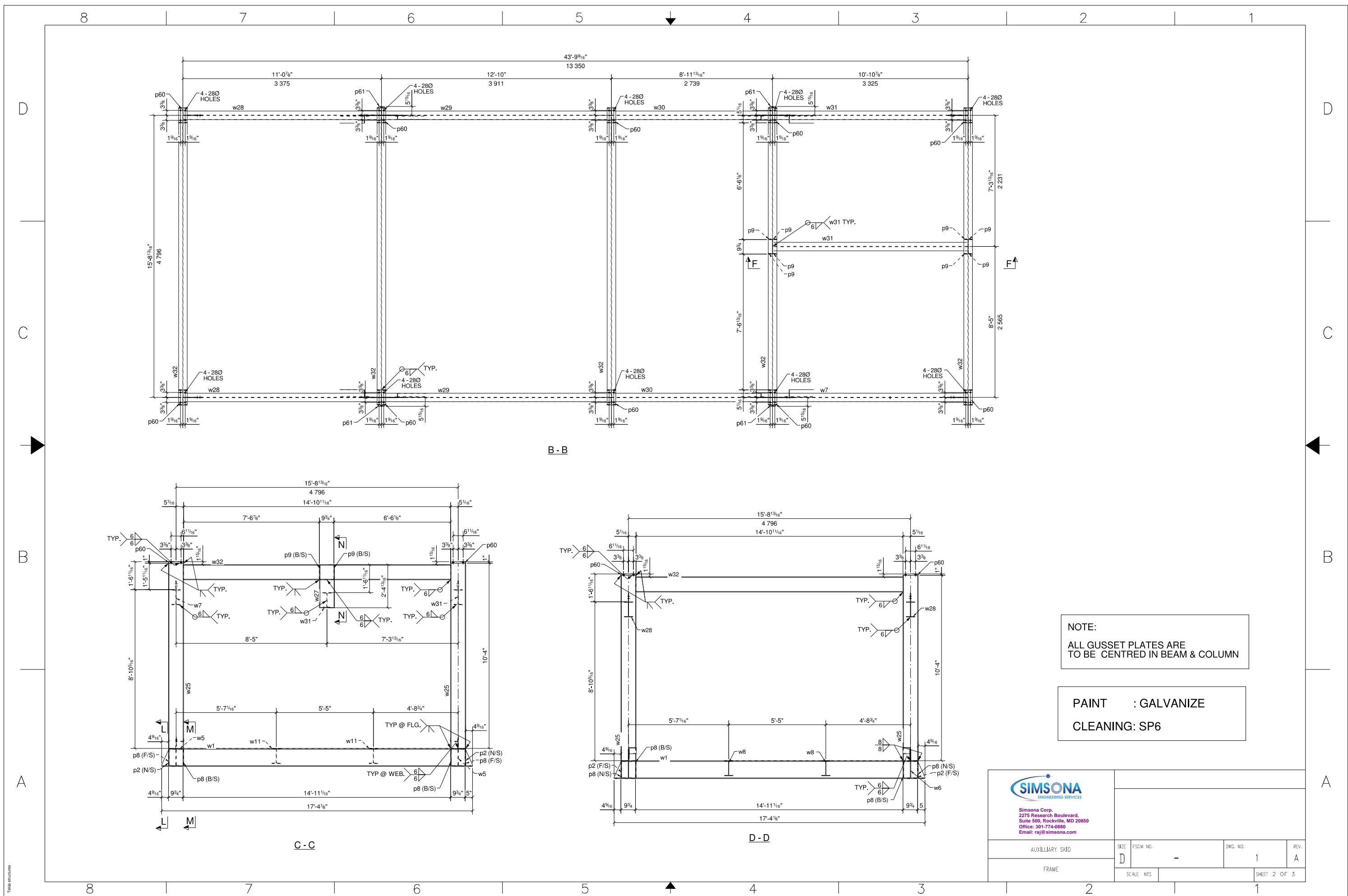
BILL OF MATERIAL

MARK	QTY	DESCRIPTION	LENGTH	WEIGHT	REMARKS
1FR1	1	FRAME			SO-2
1FR1	1	W12X40	11'-0 1/2"	440	Galv. A992
a1	2	L5X5X3/8	11'-10 13/16"	294	A36
a2	2	L5X5X3/8	11'-10 9/16"	292	A36
a4	2	L2-1/2X2-1/2X3/8	13'-5 1/4"	158	A36
a5	2	L2-1/2X2-1/2X3/8	10'-11 1/16"	129	A36
c1	3	MC10X25	5'-4 3/4"	405	Galv. A36
c2	1	MC10X25	2'-2 1/4"	55	Galv. A36
c3	1	MC10X25	5'-6 3/4"	139	Galv. A36
c4	1	MC10X25	5'-6 3/4"	139	Galv. A36
p2	4	PL10X97	0'-10 15/16"	18	A36
p3	4	PL10X150	1'-1 7/16"	34	A36
p4	4	PL10X150	1'-1 7/16"	34	A36
p8	36	PL10X97	0'-10 15/16"	164	A36
p9	8	PL10X70	0'-9 9/8"	22	A36
p18	4	PL10X297	1'-5 11/16"	61	A36
p19	2	PL10X200	1'-4 1/8"	27	A36
p20	2	PL10X150	1'-4"	21	A36
p21	2	PL10X150	0'-11 7/8"	15	A36
p22	2	PL10X200	1'-4 1/16"	26	A36
p27	2	PL10X200	1'-2 15/16"	24	A36
p28	2	PL10X150	0'-10 7/8"	14	A36
p29	2	PL10X200	1'-3 1/16"	24	A36
p30	2	PL10X150	1'-2 7/8"	19	A36
p60	10	FL25X146	0'-10 3/16"	163	A36
p61	4	FL22X100	0'-7 7/8"	29	A36
w1	5	W12X40	17'-4 1/8"	3453	Galv. A992
w3	2	W12X40	12'-9 5/8"	1019	Galv. A992
w4	2	W12X40	8'-11 7/16"	713	Galv. A992
w5	2	W12X40	10'-10 1/2"	866	Galv. A992
w6	1	W12X40	11'-0 1/2"	440	Galv. A992
w7	1	W10X22	10'-10 5/8"	240	Galv. A992
w8	2	W10X22	11'-0 1/2"	488	Galv. A992
w9	2	W10X22	12'-9 5/8"	565	Galv. A992
w10	2	W10X22	8'-11 7/16"	396	Galv. A992
w11	2	W10X22	10'-10 1/2"	480	Galv. A992
w12	3	W10X22	4'-8 7/16"	312	Galv. A992
w13	3	W10X22	5'-6 3/4"	369	Galv. A992
w25	10	W10X22	10'-4"	2283	Galv. A992
w27	2	W10X22	1'-6 11/16"	69	Galv. A992
w28	2	W10X22	11'-0 5/8"	488	Galv. A992
w29	2	W10X22	12'-9 3/4"	566	Galv. A992
w30	2	W10X22	8'-11 9/16"	396	Galv. A992
w31	2	W10X22	10'-10 5/8"	481	Galv. A992
w32	5	W10X22	14'-10 11/16"	1644	Galv. A992
w34	1	W10X22	4'-4 3/8"	96	Galv. A992
w35	1	W10X22	5'-4 3/4"	119	Galv. A992
TOTAL WEIGHT THIS DRAWING				18230	

Total Qty.	Unit Qty.	Bolt Size & Length



AUXILIARY SKID	SIZE	FSCM NO.	DWG. NO.	REV.
FRAME	D	-	1	A
	SCALE	NTS		SHEET

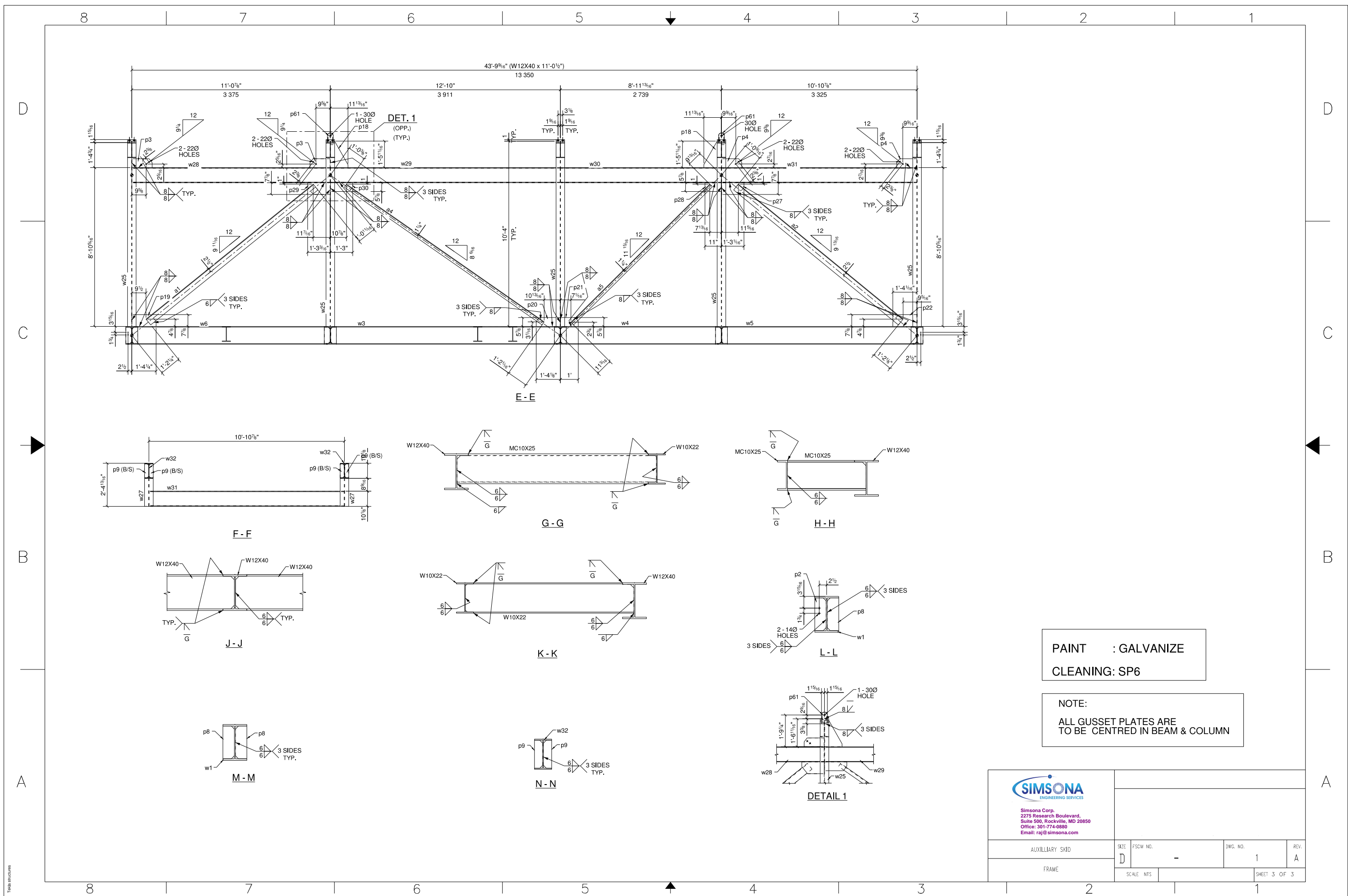


NOTE:
ALL GUSSET PLATES ARE
TO BE CENTRED IN BEAM & COLUMN

PAINT : GALVANIZE
CLEANING: SP6

<p>Simsona Corp. 2275 Research Boulevard, Suite 500, Rockville, MD 20850 Office: 301-774-0880 Email: raj@simsona.com</p>		SIZE	FSCM NO.	DWG. NO.	REV.
AUXILIARY SKID		D	-	1	A
FRAME		SCALE	NTS	SHEET 2 OF 3	

Taha Structures

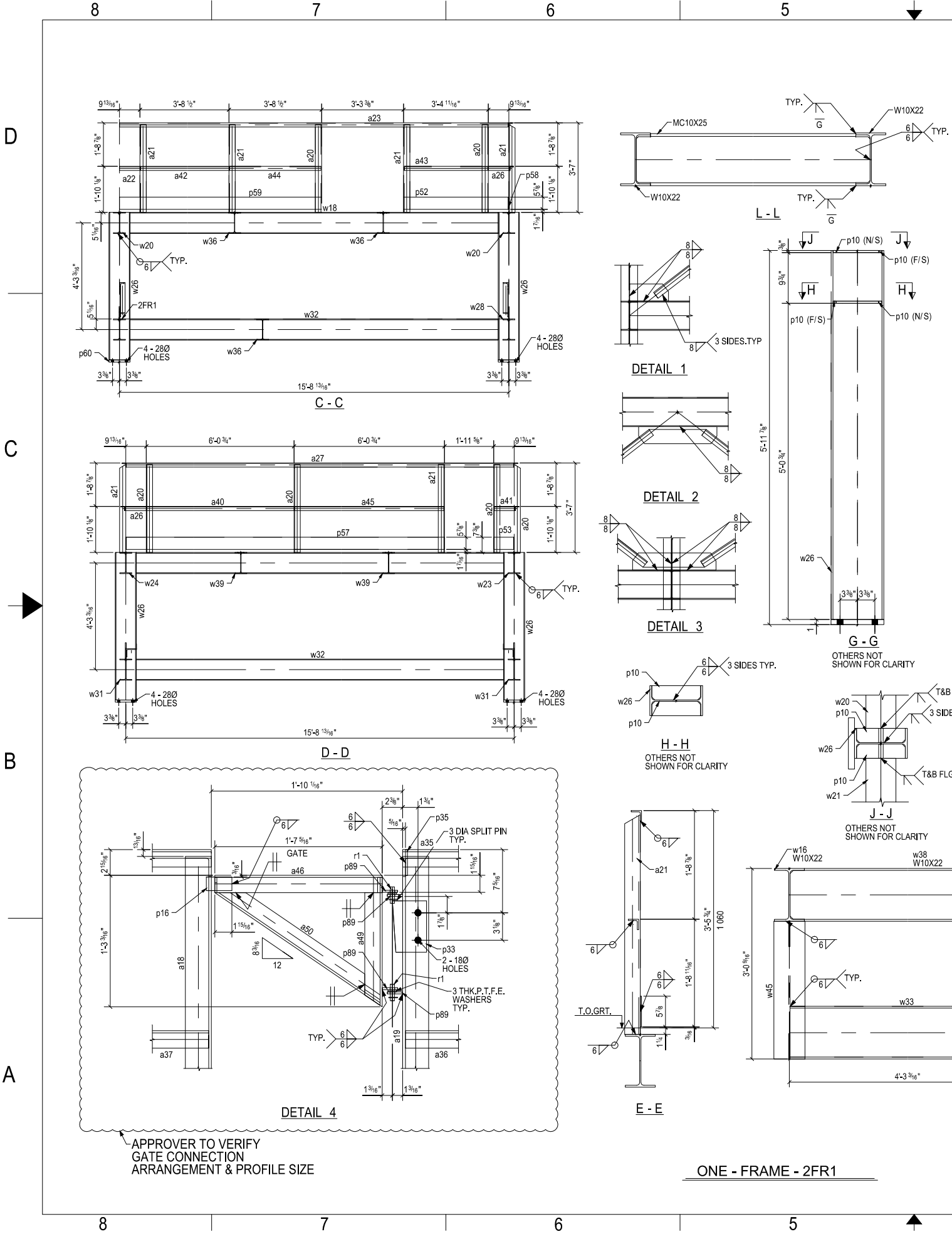


PAINT : GALVANIZE
 CLEANING: SP6

NOTE:
 ALL GUSSET PLATES ARE
 TO BE CENTRED IN BEAM & COLUMN

 Simsona Corp. 2275 Research Boulevard, Suite 500, Rockville, MD 20850 Office: 301-774-0880 Email: raj@simsona.com		SIZE	FSCM NO.	DWG. NO.	REV.
		AUXILIARY SKID	D	-	1
FRAME		SCALE	NTS	SHEET 3 OF 3	

Terra Structures



BILL OF MATERIAL

MARK	QTY	DESCRIPTION	LENGTH	WEIGHT	REMARKS
p56	1	PL6X150	18'-9 3/8"	89	
p57	1	PL6X150	12'-11 1/8"	61	
p58	1	PL6X150	14'-7 1/4"	69	
p59	1	PL6X150	8'-2 7/8"	39	
p60	10	FL25X146	0'-10 3/16"	163	
p66	4	PL30X250	1'-3 3/4"	193	
p89	4	PL6X40	0'-1 3/4"	1	
p90	2	PL6X150	14'-7"	138	
r1	2	RB12	0'-1 7/8"	0	
w15	1	W10X22	14'-10 11/16"	329	Galv.
w16	1	W10X22	14'-10 11/16"	329	Galv.
w17	1	W10X22	14'-10 11/16"	329	Galv.
w18	1	W10X22	14'-10 11/16"	329	Galv.
w19	1	W10X22	14'-10 11/16"	329	Galv.
w20	2	W10X22	11'-0 5/8"	488	Galv.
w21	2	W10X22	12'-9 3/4"	566	Galv.
w22	2	W10X22	8'-11 9/16"	396	Galv.
w23	1	W10X22	10'-10 5/8"	240	Galv.
w24	1	W10X22	10'-10 5/8"	240	Galv.
w26	10	W10X22	5'-10 7/8"	1304	Galv.
w28	1	W10X22	11'-0 5/8"	244	Galv.
w29	2	W10X22	12'-9 3/4"	566	Galv.
w30	2	W10X22	8'-11 9/16"	396	Galv.
w31	2	W10X22	10'-10 5/8"	481	Galv.
w32	5	W10X22	14'-10 11/16"	1644	Galv.
w33	1	W10X22	4'-2 15/16"	94	Galv.
w36	3	W10X22	11'-0 5/8"	732	Galv.
w37	1	W10X22	4'-8 13/16"	105	Galv.
w38	3	W10X22	8'-11 9/16"	594	Galv.
w39	2	W10X22	10'-10 5/8"	481	Galv.
w40	2	W10X22	12'-9 3/4"	566	Galv.
w41	1	W10X22	5'-0 1/8"	111	Galv.
w42	1	W10X22	5'-11 3/16"	131	Galv.
w43	1	W10X22	1'-7 7/16"	36	Galv.
w45	2	WBX15	2'-2 7/16"	66	Galv.
TOTAL WEIGHT THIS DRAWING					14882

Total Qty.	Unit Qty.	Bolt Size & Length
40	40	BOLT 1" Ø A325N 0-3 1/2"

NOTE:-
ALL GUSSET PLATES ARE TO BE CENTERED IN BEAM & COLUMN

BILL OF MATERIAL

MARK	QTY	DESCRIPTION	LENGTH	WEIGHT	REMARKS
A36					
A36	2FR1	FRAME			SO-2
A36	W10X22	W10X22	11'-0 5/8"	244	Galv. A992
A36	a3	L5X5X3/8	4'-9 1/16"	234	A36
A36	a6	L2-1/2X2-1/2X3/8	5'-0 3/4"	89	A36
A36	a7	L2-1/2X2-1/2X3/8	5'-6 13/16"	131	A36
A36	a8	L2-1/2X2-1/2X3/8	4'-6 1/8"	106	A36
A36	a9	L2-1/2X2-1/2X3/8	5'-0 13/16"	30	A36
A36	a18	L4X3X5/16	3'-6 3/16"	25	A36
A36	a19	L4X3X5/16	3'-6 3/16"	25	A36
A36	a20	L3X3X5/16	3'-6 3/16"	234	A36
A36	a21	L3X3X5/16	3'-6 3/16"	298	A36
A36	a22	L2X2X1/4	0'-9 13/16"	3	A36
A36	a23	L2X2X1/4	15'-0 9/16"	51	A36
A36	a24	L2X2X1/4	14'-9"	47	A36
A36	a25	L2X2X1/4	1'-0 1/8"	6	A36
A36	a26	L2X2X1/4	1'-0 1/8"	10	A36
A36	a27	L2X2X1/4	16'-0 5/16"	51	A36
A36	a28	L2X2X1/4	11'-8 3/4"	75	A36
A36	a29	L2X2X1/4	4'-9 9/16"	15	A36
A36	a30	L2X2X1/4	4'-4 1/16"	14	A36
A36	a31	L2X2X1/4	4'-3 15/16"	14	A36
A36	a32	L2X2X1/4	5'-8 11/16"	18	A36
A36	a33	L2X2X1/4	5'-8 1/16"	18	A36
A36	a34	L2X2X1/4	4'-3 3/4"	14	A36
A36	a35	L2X2X1/4	5'-3 13/16"	17	A36
A36	a36	L2X2X1/4	4'-3 5/8"	14	A36
A36	a37	L2X2X1/4	4'-9 1/4"	15	A36
A36	a38	L2X2X1/4	5'-11 15/16"	115	A36
A36	a39	L2X2X1/4	5'-11 5/8"	19	A36
A36	a40	L2X2X1/4	6'-0 7/16"	19	A36
A36	a41	L2X2X1/4	0'-11 13/16"	3	A36
A36	a42	L2X2X1/4	3'-8 3/16"	12	A36
A36	a43	L2X2X1/4	3'-4 1/16"	11	A36
A36	a44	L2X2X1/4	3'-7 7/8"	12	A36
A36	a45	L2X2X1/4	6'-0 1/8"	19	A36
A36	a46	L2X2X1/4	1'-7 5/16"	5	A36
A36	a47	L2X2X1/4	14'-7"	47	A36
A36	a48	L2X2X1/4	14'-9"	47	A36
A36	a49	L2X2X1/4	1'-2 7/8"	4	A36
A36	a50	L2X2X1/4	1'-11 1/16"	6	A36
A36	c5	MC10X25	5'-0 1/16"	250	Galv. A36
A36	c6	MC10X25	5'-8 3/4"	143	Galv. A36
A36	c7	MC10X25	0'-4 15/16"	10	Galv. A36
A36	p5	PL10X150	0'-9 5/8"	14	A36
A36	p6	PL10X150	0'-9 11/16"	4	A36
A36	p7	PL10X150	0'-9 11/16"	11	A36
A36	p10	PL10X70	0'-9 3/8"	45	A36
A36	p11	PL10X200	2'-6 7/8"	50	A36
A36	p12	PL10X150	1'-10 7/8"	29	A36
A36	p13	PL10X150	2'-7 1/16"	40	A36
A36	p14	PL10X150	2'-3 1/16"	35	A36
A36	p16	PL10X40	0'-2 15/16"	1	A36
A36	p23	PL10X200	1'-3 5/16"	50	A36
A36	p24	PL10X150	0'-11 5/16"	29	A36
A36	p25	PL10X150	1'-3 3/16"	39	A36
A36	p26	PL10X150	1'-1 7/16"	34	A36
A36	p31	FL6X44	0'-1 3/4"	0	A36
A36	p33	PL10X100	0'-6 7/8"	2	A36
A36	p35	FL6X76	0'-11 9/16"	2	A36
A36	p52	PL6X150	4'-2 5/16"	20	A36
A36	p53	PL6X150	0'-9 13/16"	4	A36
A36	p54	PL6X150	9'-7 11/16"	46	A36
A36	p55	PL6X150	5'-2 1/16"	25	A36

APPROVER TO VERIFY GATE CONNECTION ARRANGEMENT & PROFILE SIZE

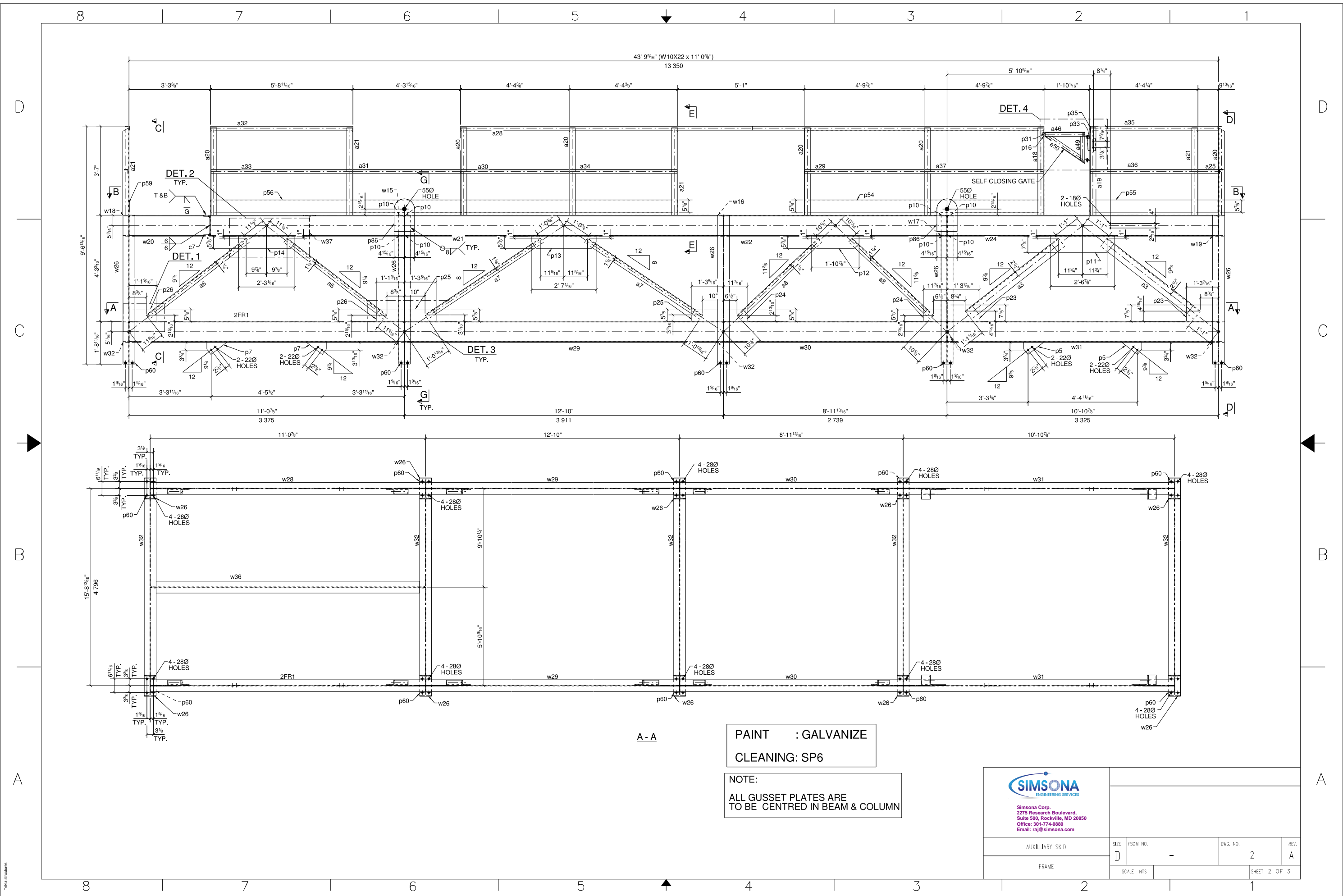
PAINT : GALVANIZE
CLEANING: SP6

SIMSONA
ENGINEERING SERVICES
Simsona Corp.
2275 Research Boulevard,
Suite 500, Rockville, MD 20850
Office: 301-774-0880
Email: raj@simsona.com

AUXILIARY SKID	SCALE	NTS	FSOM NO.	DWG. NO.	REV.
				2	A
				SHEET 1 OF 3	

○ - WORK POINT

ONE - FRAME - 2FR1

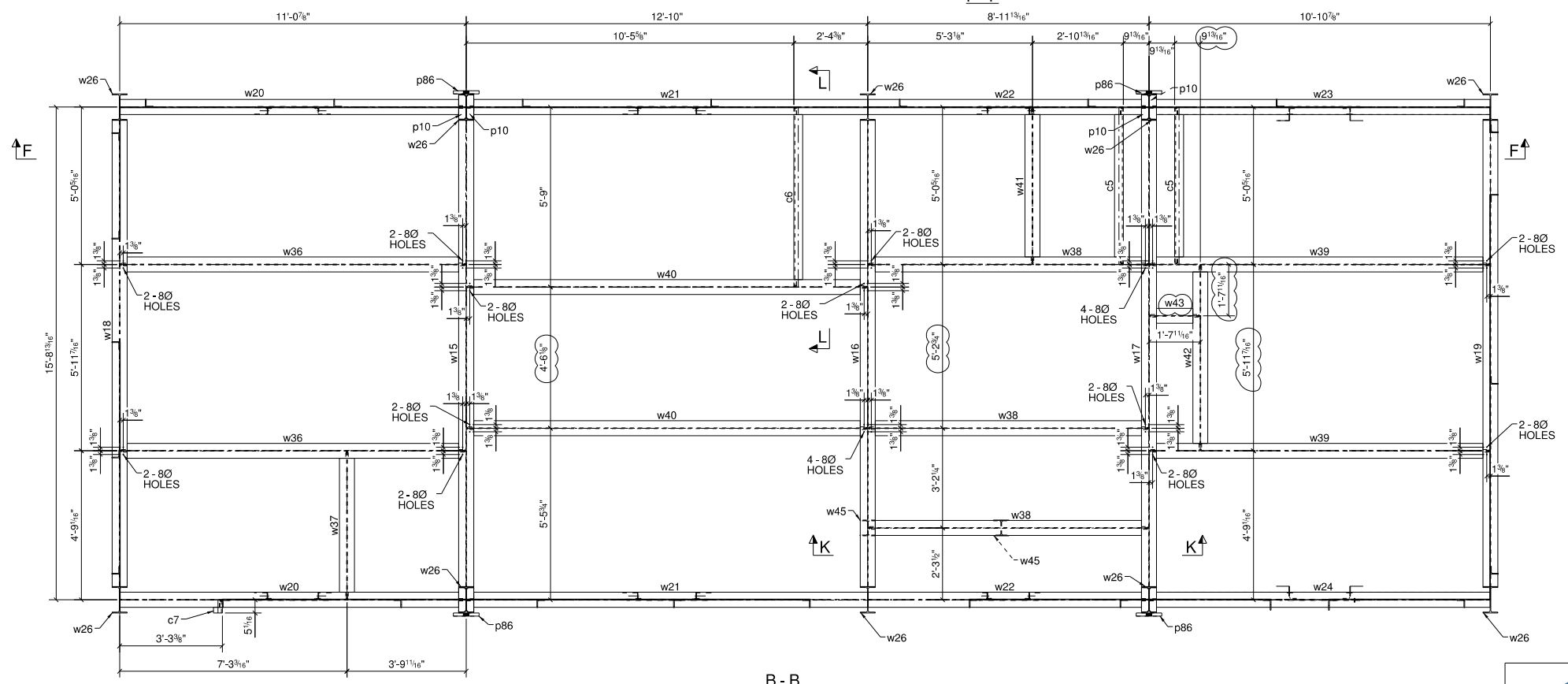
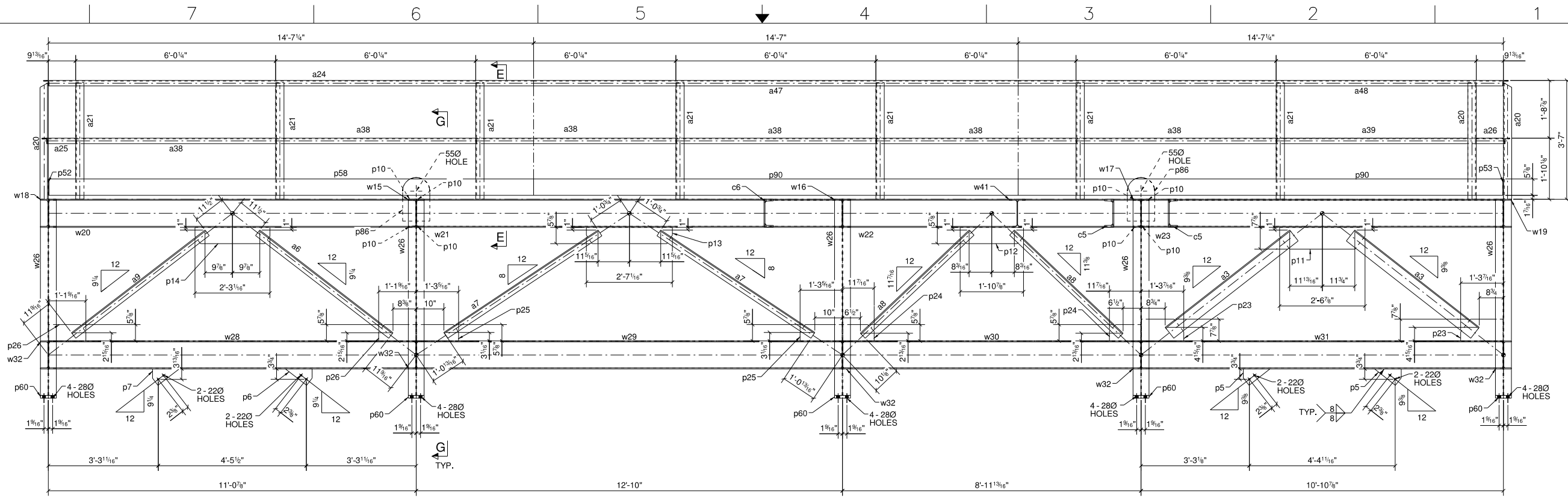


A - A

PAINT : GALVANIZE
 CLEANING: SP6

NOTE:
 ALL GUSSET PLATES ARE
 TO BE CENTRED IN BEAM & COLUMN

 Simsona Corp. 2275 Research Boulevard, Suite 500, Rockville, MD 20850 Office: 301-774-0880 Email: raj@simsona.com		SIZE	FSCM NO.	DWG. NO.	REV.
		AUXILIARY SKID	D	-	2
FRAME	SCALE	NTS	SHEET 2 OF 3		



PAINT : GALVANIZE
 CLEANING: SP6

NOTE:
 ALL GUSSET PLATES ARE
 TO BE CENTRED IN BEAM & COLUMN

APPROVER TO VERIFY
 ALL CLOUDED PORTION

<p>Simsona Corp. 2275 Research Boulevard, Suite 500, Rockville, MD 20850 Office: 301-774-0880 Email: raj@simsona.com</p>				
AUXILIARY SKID	SIZE D	FSCM NO. -	DWG. NO. 2	REV. A
FRAME	SCALE NTS		SHEET 3 OF 3	

Tada Structures