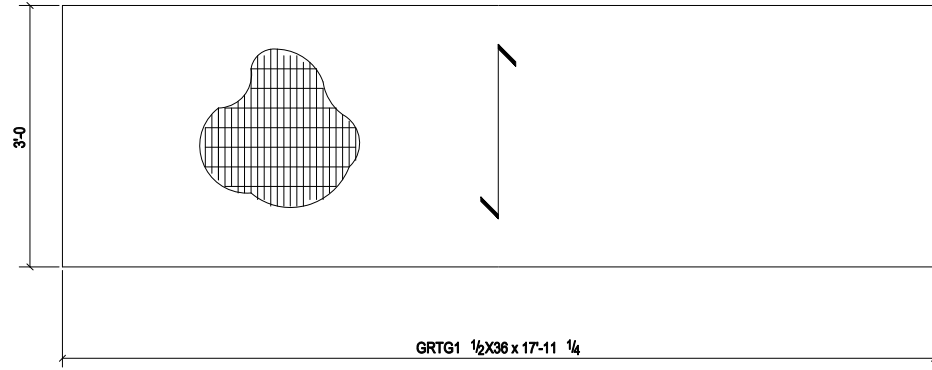
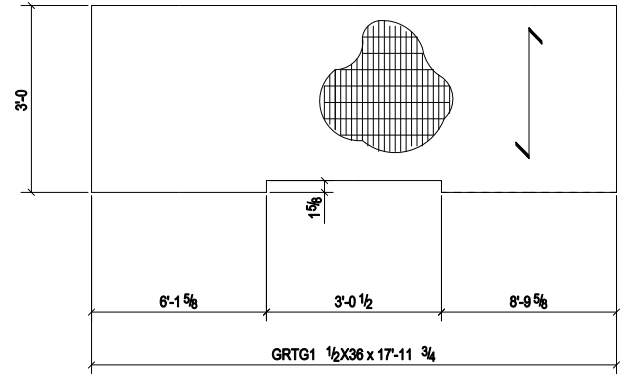


BILL OF MATERIAL

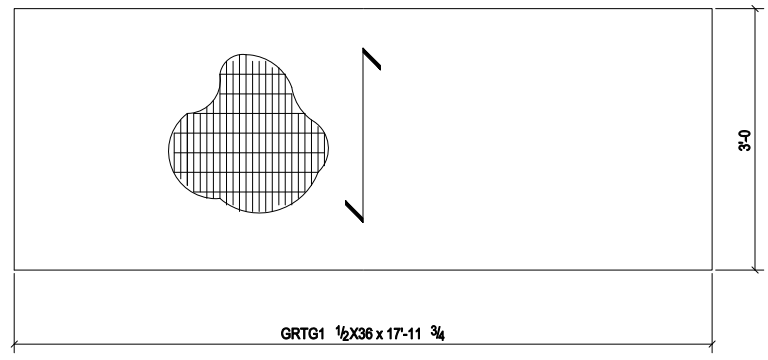
QTY	MARK	Priority	DESCRIPTION	LENGTH	MATERIAL	REMARKS
5	3838A		GRATINGS			
5	3838A		GRTG1 1/2"X36"	17'-11 1/4"	A1011	GALV.
3	3838B		GRATINGS			
3	3838B		GRTG1 1/2"X36"	17'-11 3/4"	A1011	GALV.
4	3838C		GRATINGS			
4	3838C		GRTG1 1/2"X36"	17'-11 3/4"	A1011	GALV.
2	3838D		GRATINGS			
2	3838D		GRTG1 1/2"X36"	4'-5 1/4"	A1011	GALV.
1	3838E		GRATING			
1	3838E		GRTG1 1/2"X36"	19'-6 7/8"	A1011	GALV.
2	3838F		GRATINGS			
2	3838F		GRTG1 1/2"X36"	16'-3 7/8"	A1011	GALV.
1	3838G		GRATING			
1	3838G		GRTG1 1/2"X36"	17'-10 3/4"	A1011	GALV.
5	3838H		GRATINGS			
5	3838H		GRTG1 1/2"X36"	8'-11 1/4"	A1011	GALV.



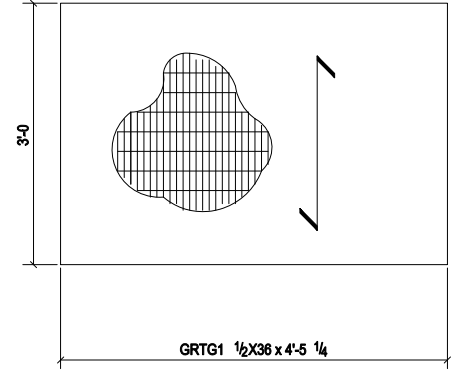
5 - GRATINGS - 3838A
(GALV.)



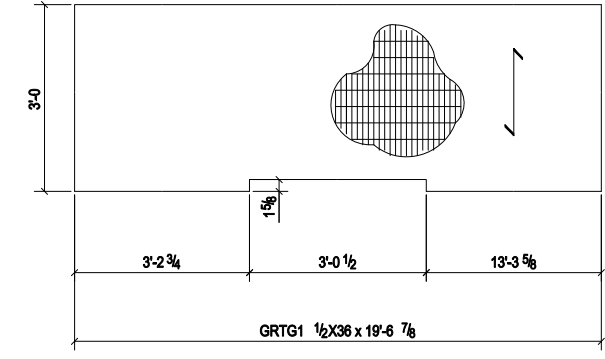
3 - GRATINGS - 3838B
(GALV.)



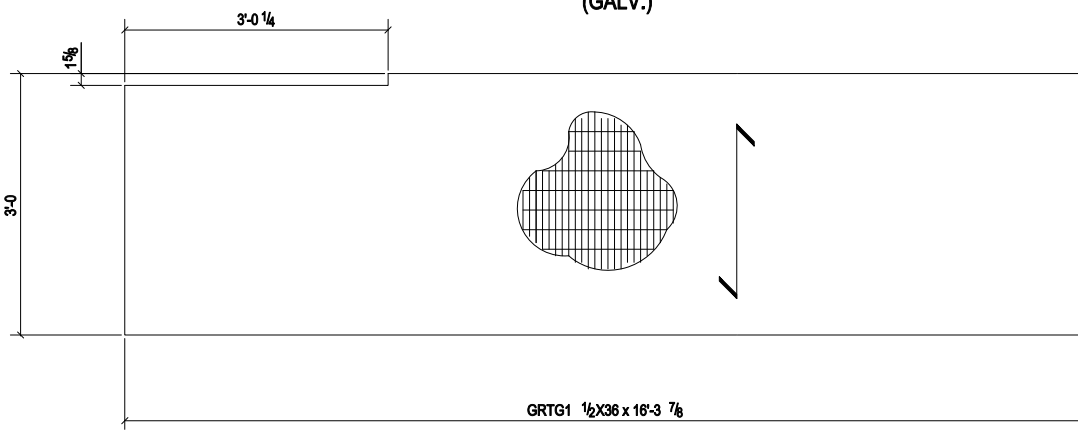
4 - GRATINGS - 3838C
(GALV.)



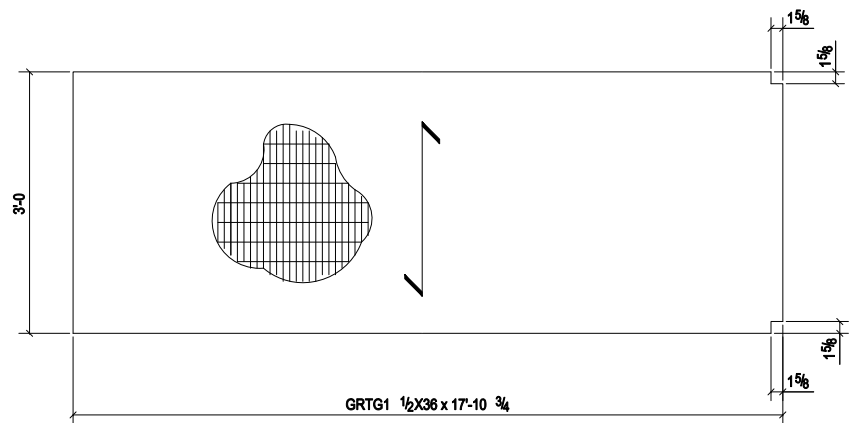
2 - GRATINGS - 3838D
(GALV.)



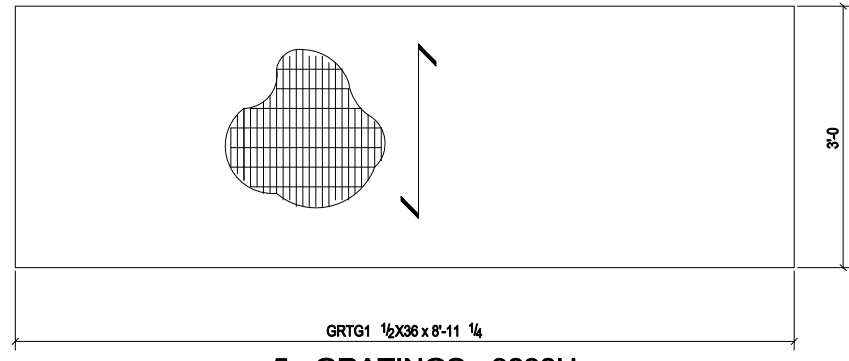
ONE - GRATING - 3838E
(GALV.)



2 - GRATINGS - 3838F
(GALV.)



ONE - GRATING - 3838G
(GALV.)



5 - GRATINGS - 3838H
(GALV.)

APPROVAL / REVIEW AUTHORITY:
 APPROVAL BY THE OWNER OF SHOP DRAWINGS PREPARED BY THE FABRICATOR INDICATES THAT THE FABRICATOR HAS CORRECTLY INTERPRETED THE CONTRACT DRAWINGS. APPROVAL DOES NOT RELIEVE THE FABRICATOR OF THE RESPONSIBILITY FOR ACCURACY OF DETAIL DIMENSIONS, NOR THE GENERAL FIT-UP OF PARTS TO BE ASSEMBLED IN THE FIELD. UNLESS SPECIFICALLY STATED TO THE CONTRARY, ANY ADDITIONS, DELETIONS OR CHANGES INDICATED ON THE APPROVAL OF THE SHOP AND ERECTION DRAWINGS ARE AUTHORIZATIONS BY THE OWNER TO RELEASE THE ADDITIONS, DELETIONS OR CHANGES FOR CONSTRUCTION.

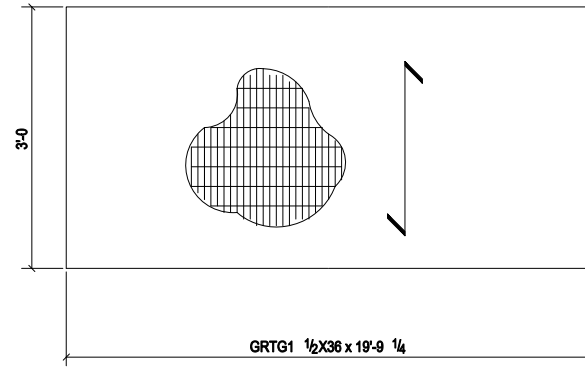
Holes	13/16"	UNO
CLEANING:	SSPC-SP3	
PAIN:	ONE SHOP COAT ALKYD PRIMER	

NO.	1005/2015	DATE:	FOR FABRICATION	DESCRIPTION:	DATE:	NO.	TYPE	FOR
				REVISIONS			PRINT RECORD	

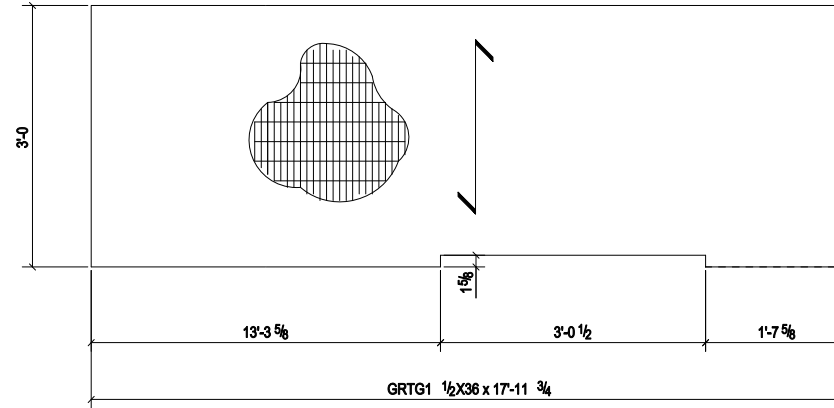
DRG. REF.: 3E2		AON #	
<div style="display: inline-block; vertical-align: middle; font-size: 8px;"> Simsona Corp. 2275 Research Boulevard, Suite 500, Rockville, MD 20850 Office: 301-774-0680 Email: raj@simsona.com </div>			
CUSTOMER:	RQ.CONSTRUCTION		
PROJECT:	P-3191 SOF SUSTAINMENT TRAINING COMPLEX		
LOCATION:	MCB CAMP LEJEUNE, JACKSONVILLE, NC		
DESCRIPTION:	GRATING		
DRAWN BY: AAK	CHECKED BY: RS	JOB NO. 0407	SHEET NO. 3838
DATE: 10/05/2015	DATE: 10/05/2015		

BILL OF MATERIAL

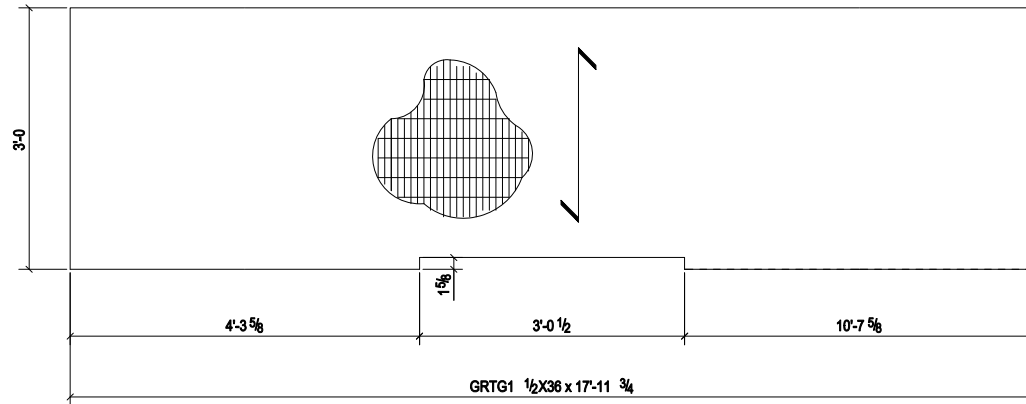
QTY	MARK	Priority	DESCRIPTION	LENGTH	MATERIAL	REMARKS
2	3839A		GRATINGS			
2	3839A		GRTG1 1/2"X36"	19'-8 1/4"	A1011	GALV.
2	3839B		GRATINGS			
2	3839B		GRTG1 1/2"X36"	17'-11 3/4"	A1011	GALV.
2	3839C		GRATINGS			
2	3839C		GRTG1 1/2"X36"	17'-11 3/4"	A1011	GALV.
1	3839D		GRATING			
1	3839D		GRTG1 1/2"X36"	18'-0 1/4"	A1011	GALV.
1	3839E		GRATING			
1	3839E		GRTG1 1/2"X36"	17'-11 3/4"	A1011	GALV.
1	3839F		GRATING			
1	3839F		GRTG1 1/2"X36"	17'-11 3/4"	A1011	GALV.
1	3839G		GRATING			
1	3839G		GRTG1 1/2"X36"	10'-9 1/4"	A1011	GALV.
1	3839H		GRATING			
1	3839H		GRTG1 1/2"X36"	17'-11 1/4"	A1011	GALV.



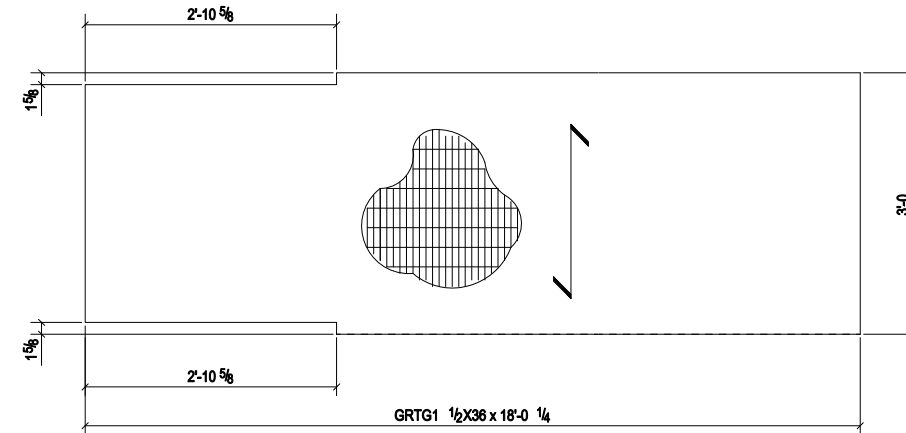
2 - GRATINGS - 3839A
(GALV.)



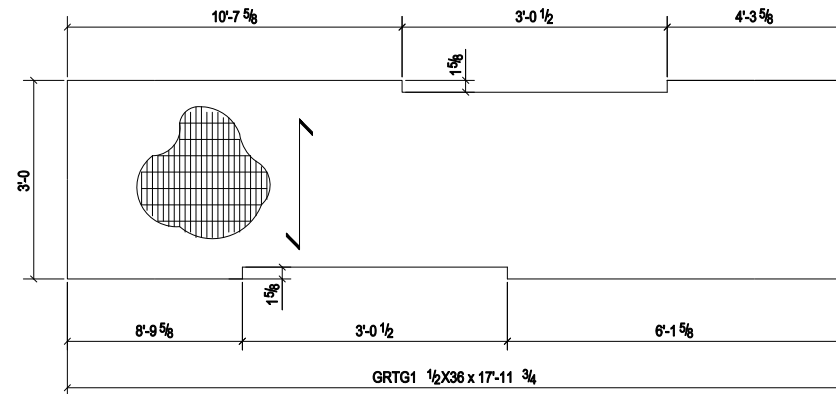
2 - GRATINGS - 3839B
(GALV.)



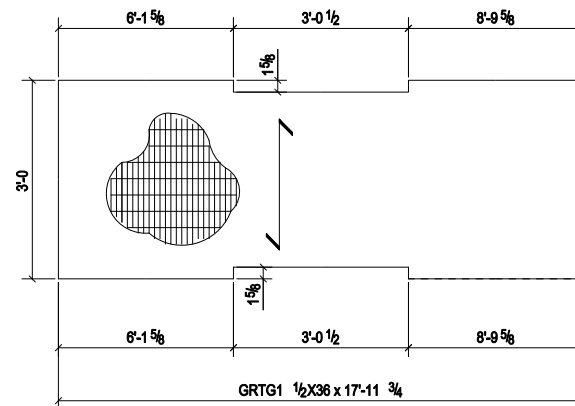
2 - GRATINGS - 3839C
(GALV.)



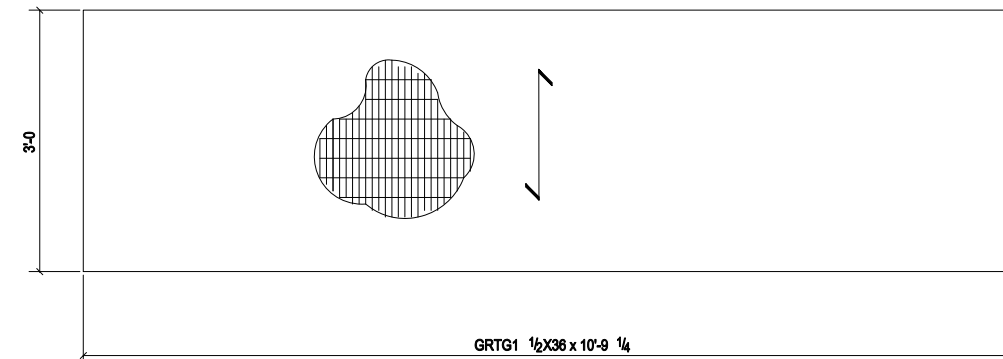
ONE - GRATING - 3839D
(GALV.)



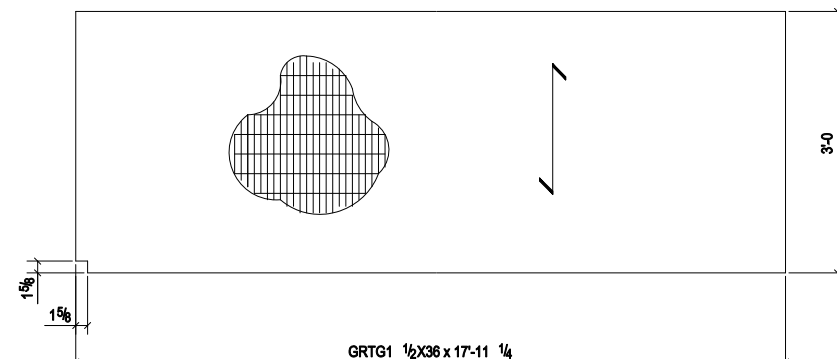
ONE - GRATING - 3839E
(GALV.)



ONE - GRATING - 3839F
(GALV.)



ONE - GRATING - 3839G
(GALV.)



ONE - GRATING - 3839H
(GALV.)

APPROVAL / REVIEW AUTHORITY:

APPROVAL BY THE OWNER OF SHOP DRAWINGS PREPARED BY THE FABRICATOR INDICATES THAT THE FABRICATOR HAS CORRECTLY INTERPRETED THE CONTRACT DRAWINGS. APPROVAL DOES NOT RELIEVE THE FABRICATOR OF THE RESPONSIBILITY FOR ACCURACY OF DETAIL DIMENSIONS, NOR THE GENERAL FIT-UP OF PARTS TO BE ASSEMBLED IN THE FIELD. UNLESS SPECIFICALLY STATED TO THE CONTRARY, ANY ADDITIONS, DELETIONS OR CHANGES INDICATED ON THE APPROVAL OF THE SHOP AND ERECTION DRAWINGS ARE AUTHORIZATIONS BY THE OWNER TO RELEASE THE ADDITIONS, DELETIONS OR CHANGES FOR CONSTRUCTION.

Holes	13/16"	UNO
Cleaning	SSPC-SP3	
Paint	ONE SHOP COAT VERSARE-ALKYD PRIMER	

NO.	DATE	FOR FABRICATION	DESCRIPTION	DATE	NO.	TYPE	FOR
1	10/05/2015						PRINT RECORD

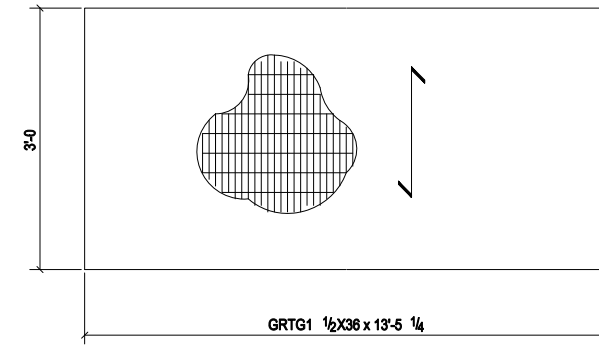
DRG. REF.: 3E2 AON #



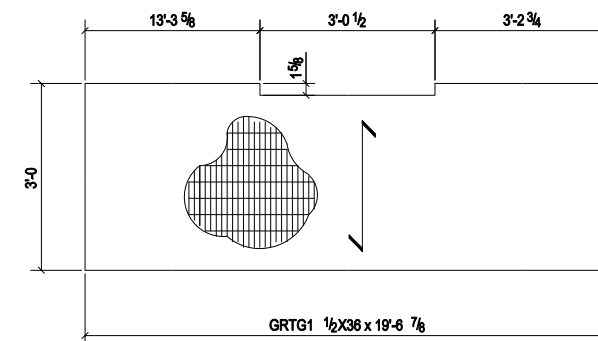
CUSTOMER:	RQ.CONSTRUCTION
PROJECT:	P-3191 SOF SUSTAINMENT TRAINING COMPLEX
LOCATION:	MCB CAMP LEJEUNE, JACKSONVILLE, NC
DESCRIPTION:	GRATING
DRAWN BY: AAK	CHECKED BY: RS
DATE: 10/05/2015	DATE: 10/05/2015
JOB NO. 0407	SHEET NO. 3839

BILL OF MATERIAL

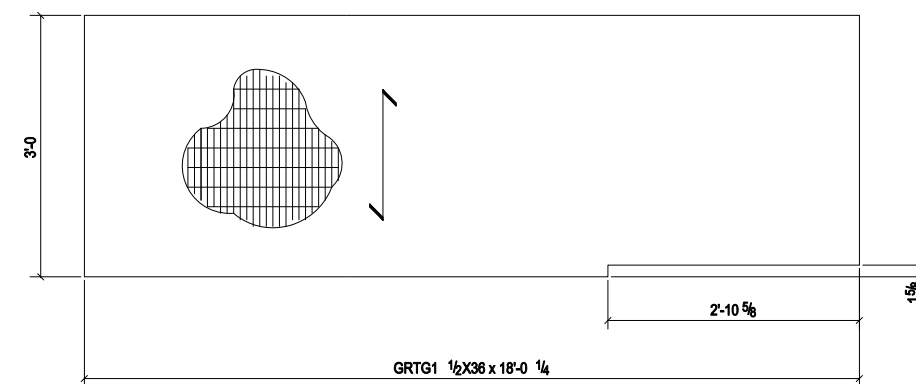
QTY	MARK	Priority	DESCRIPTION	LENGTH	MATERIAL	REMARKS
2	3840A		GRATINGS			
2	3840A		GRTG1 1/2"x36"	13'-5 1/4"	A1011	GALV.
1	3840B		GRATING			
1	3840B		GRTG1 1/2"x36"	19'-6 7/8"	A1011	GALV.
1	3840C		GRATING			
1	3840C		GRTG1 1/2"x36"	18'-0 1/4"	A1011	GALV.



2 - GRATINGS - 3840A
(GALV.)



ONE - GRATING - 3840B
(GALV.)



ONE - GRATING - 3840C
(GALV.)

APPROVAL / REVIEW AUTHORITY:

APPROVAL BY THE OWNER OF SHOP DRAWINGS PREPARED BY THE FABRICATOR INDICATES THAT THE FABRICATOR HAS CORRECTLY INTERPRETED THE CONTRACT DRAWINGS. APPROVAL DOES NOT RELIEVE THE FABRICATOR OF THE RESPONSIBILITY FOR ACCURACY OF DETAIL DIMENSIONS, NOR THE GENERAL FIT-UP OF PARTS TO BE ASSEMBLED IN THE FIELD. UNLESS SPECIFICALLY STATED TO THE CONTRARY, ANY ADDITIONS, DELETIONS OR CHANGES INDICATED ON THE APPROVAL OF THE SHOP AND ERECTION DRAWINGS ARE AUTHORIZATIONS BY THE OWNER TO RELEASE THE ADDITIONS, DELETIONS OR CHANGES FOR CONSTRUCTION.

HOLES	13/16"	UNO
CLEANING:	SSPC-SP3	
PAINT:	ONE SHOP COAT ALKYD PRIMER	
VERSARE:		

NO.	DATE:	FOR FABRICATION	DESCRIPTION:	DATE:	NO.	TYPE	FOR
			REVISIONS				PRINT RECORD

DRG. REF.: 3E2	AON #
----------------	-------



CUSTOMER:	RQ.CONSTRUCTION
PROJECT:	P-3191 SOF SUSTAINMENT TRAINING COMPLEX
LOCATION:	MCB CAMP LEJEUNE, JACKSONVILLE, NC
DESCRIPTION:	GRATING
DRAWN BY: AAK	CHECKED BY: RS
DATE: 10/05/2015	DATE: 10/05/2015
JOB NO. 0407	SHEET NO. 3840