
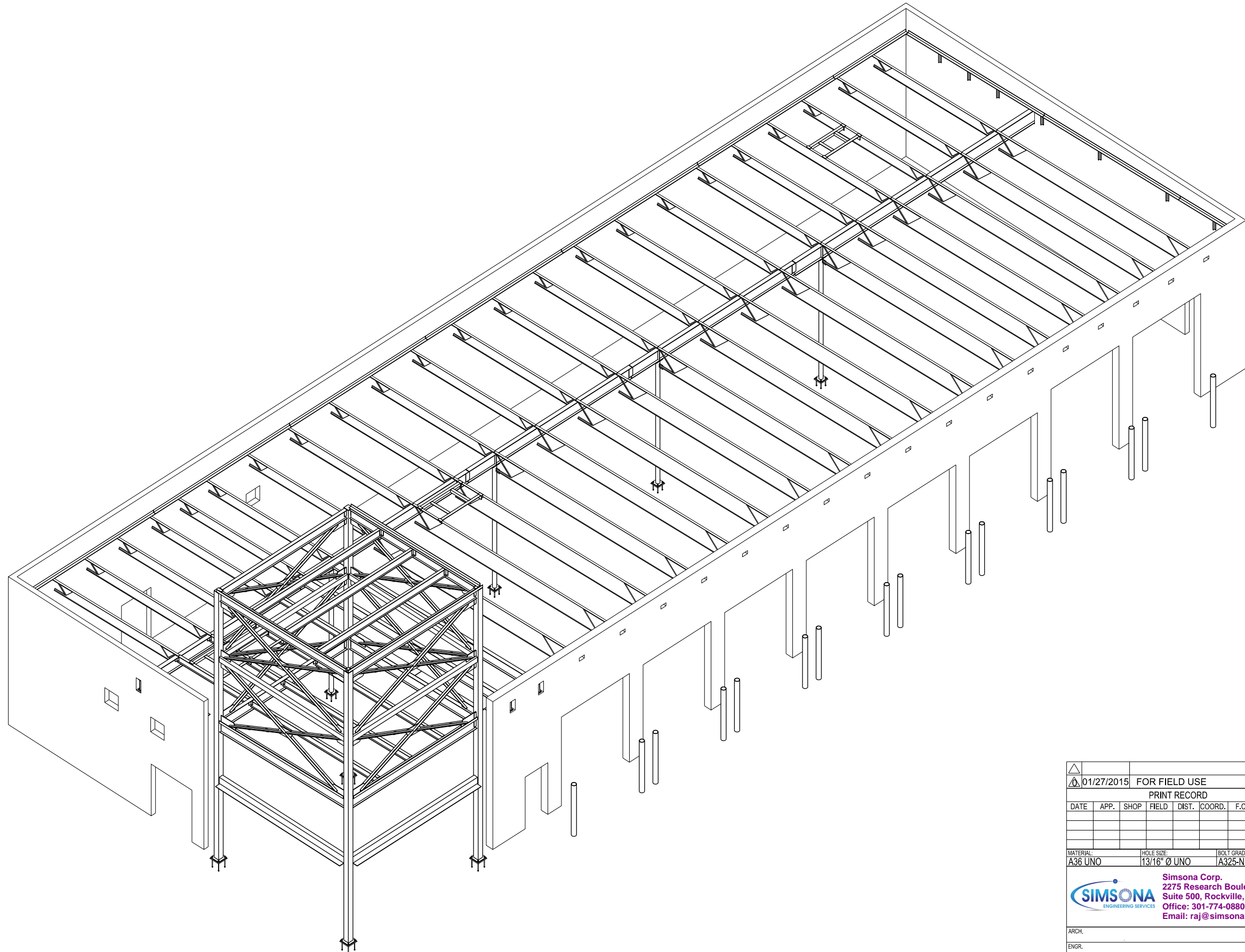




ISO VIEW

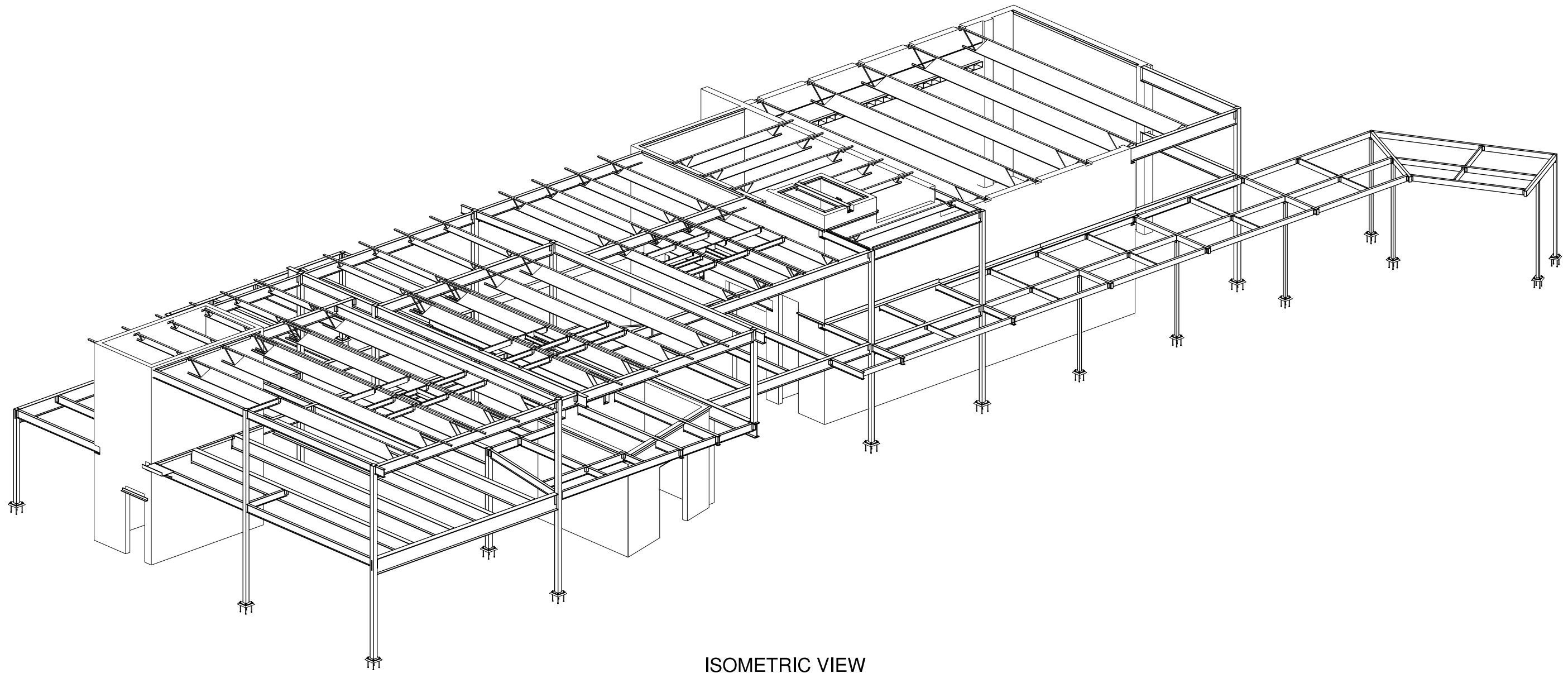
△		
△		
△		
△	For Approval	04/01/2016
NO.	REVISION	DATE
PROJECT NAME:	STERLING NORTHGATE	
LOCATION:		
CONTR:	-	
		Simsona Corp. 2275 Research Boulevard, Suite 500, Rockville, MD 20850 Office: 301-774-0880 Email: raj@simsona.com
DRAWN BY: AKK	DATE: 04/01/2016	CHECKED BY: DRN
JOB NO. -	ISO VIEW	SHEET NO. E73 △



ISOMETRIC VIEW

01/27/2015		FOR FIELD USE					
PRINT RECORD							
DATE	APP.	SHOP	FIELD	DIST.	COORD.	F.C.	OFFICE
MATERIAL:		HOLE SIZE:	BOLT GRADE:	MINIMUM WELD:	ELECTRODE:		
A36 UNO		13/16" Ø UNO	A325-N UNO	3/16"	E-70XX		
 Simsona Corp. 2275 Research Boulevard, Suite 500, Rockville, MD 20850 Office: 301-774-0880 Email: raj@simsona.com							
ARCH.		JOB NAME & LOCATION:					
ENGR.		Mr. Tire, Auto Service Centers.					
CONTR.							
REF:		JOB: 14-116					
DRAWN BY: CB		01/27/2015		CHECKED BY: VT		01/27/2015	
SHEET TITLE		ISOMETRIC VIEW				E10	
MODIFIED DATE: 01/27/2015		LAST PLOT DATE: 01/27/2015		CAD FILENAME: E10			

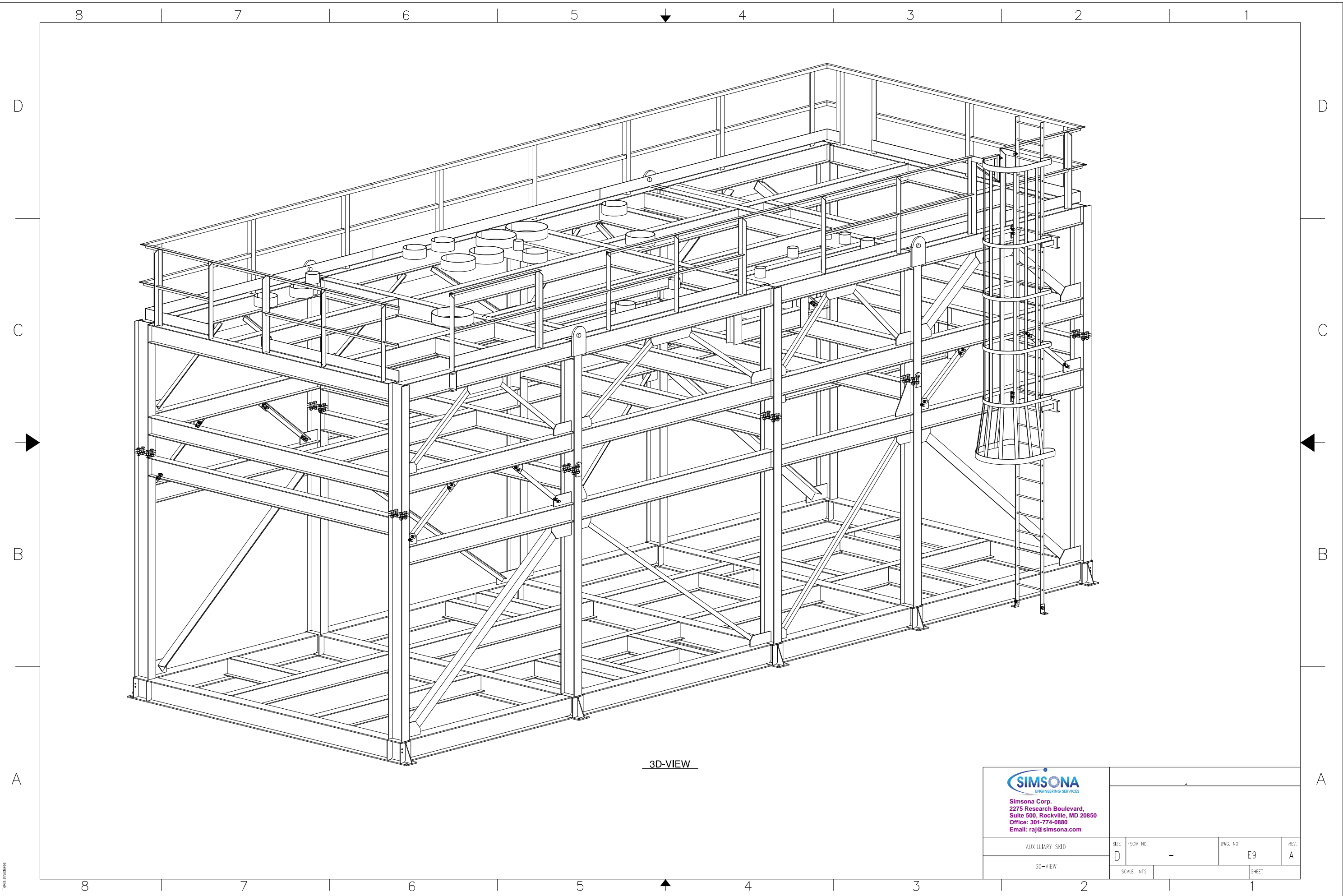
Trade Structures



ISOMETRIC VIEW

 12/18/14 FOR FIELD							
PRINT RECORD							
DATE	APP.	SHOP	FIELD	DIST.	COORD.	F.C.	OFFICE
<small>ALL INFORMATION PROVIDED ON THESE DRAWINGS ARE PREPARED IN ACCORDANCE TO THE CONTRACT DOCUMENTS AND THE SPECIFICATIONS. ALL CLOUDED AREAS SHOWN ARE DUE TO LACK OF INFORMATION PROVIDED BY THE CONTRACT DOCUMENTS OR SPECIFICATIONS, BUT PREPARED WITH ALL THE INFORMATION AVAILABLE TO US. WE MUST HAVE THESE AREAS ANSWERED BY THE GENERAL CONTRACTOR, ARCHITECT & ENGINEER BEFORE WE CAN START FABRICATING ANY MATERIAL. PLEASE RESPOND WITH THIS INFORMATION BY MARKING UP OUR SHOP DRAWINGS.</small>							
MATERIAL:	HOLE SIZE:	BOLT GRADE:	MINIMUM WELD:	ELECTRODE:			
A36 UNO	13/16" Ø UNO	A325-N UNO	3/16"	E-70XX			
 Simsona Corp. 2275 Research Boulevard, Suite 500, Rockville, MD 20850 Office: 301-774-0880 Email: raj@simsona.com							
ARCH.	JOB NAME & LOCATION:						
ENGR.	College Park Airport Operations Building						
CONTR.							
REF:	JOB: 14-115						
DRAWN BY: CB	12/18/14	CHECKED BY: MSB	12/18/14				
SHEET TITLE			SHEET: E12 				
ISOMETRIC VIEW							
MODIFIED DATE: 12/18/14		LAST PLOT DATE: 12/18/14					
CAD FILENAME: E12							

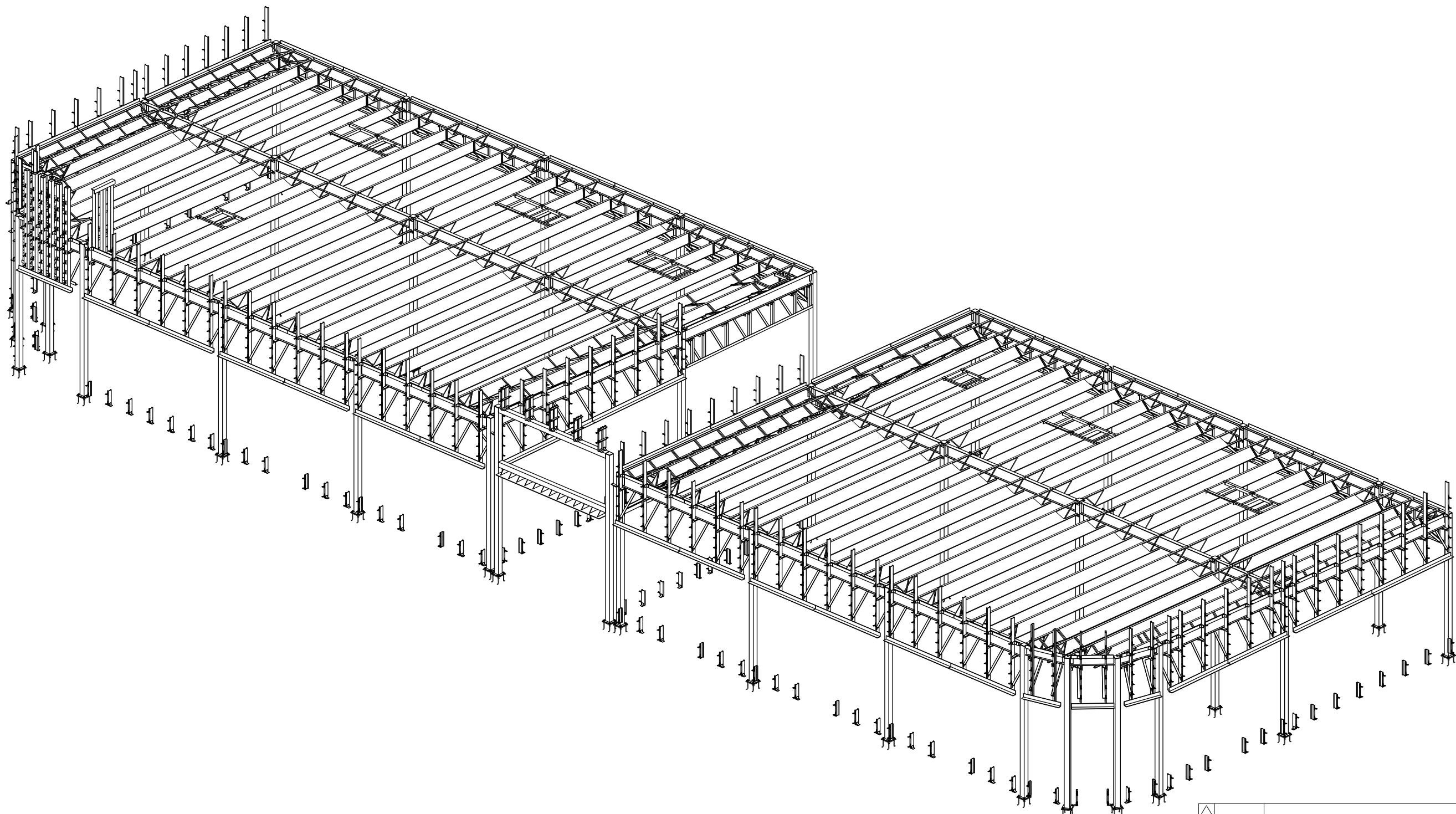
Tadao Imamura






3D-VIEW

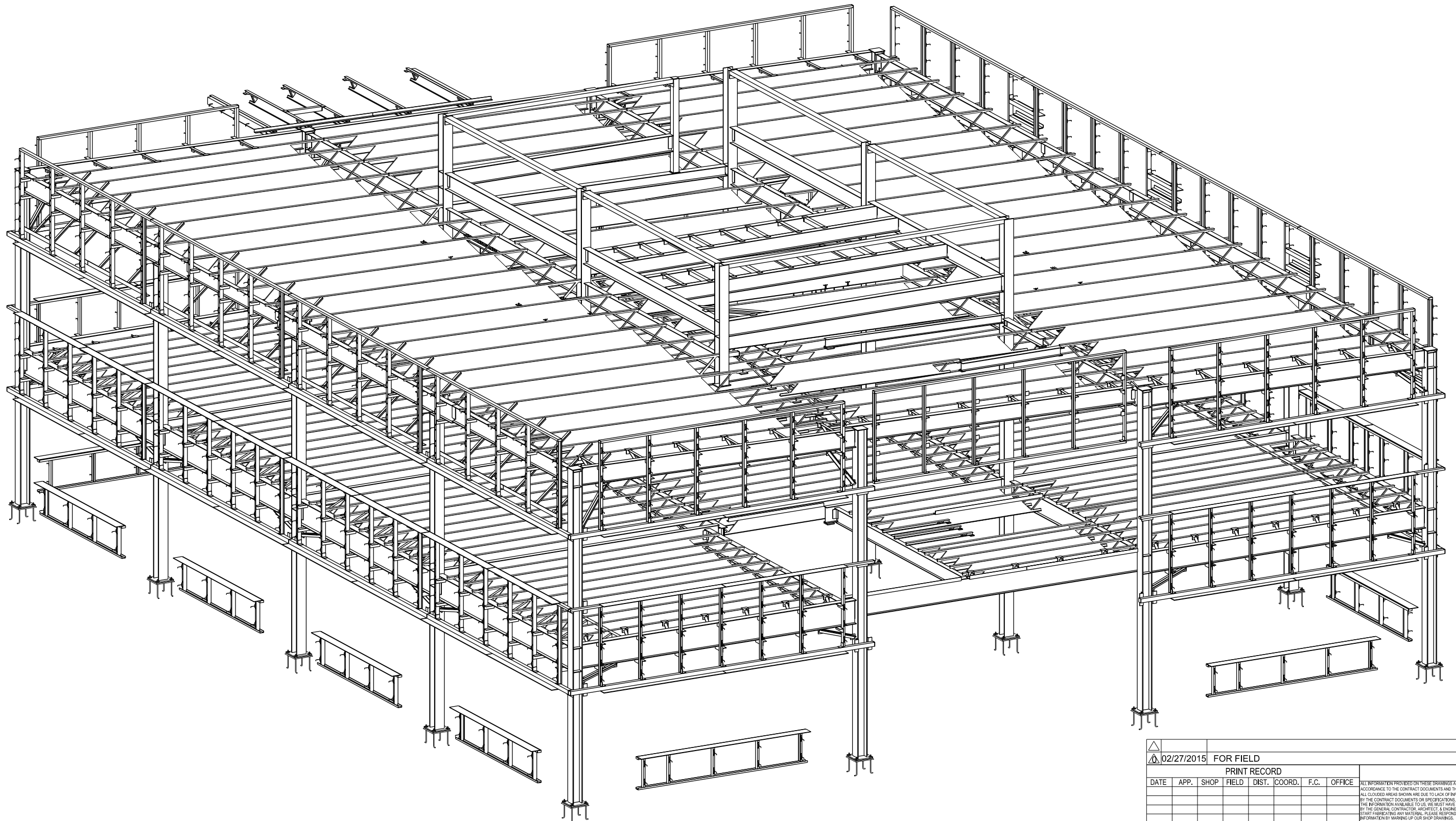
<p>Simsona Corp. 2275 Research Boulevard, Suite 500, Rockville, MD 20850 Office: 301-774-0880 Email: raj@simsona.com</p>		SIZE	FSCM NO.	DWG. NO.	REV.
		D	-	E9	A
AUXILIARY SKID		SCALE	NTS	SHEET	
3D-VIEW					

Taha Structures



ISO VIEW - 2
EAST NORTH VIEW

04/30/2015 FOR FIELD PRINT RECORD							<small>ALL INFORMATION PROVIDED ON THESE DRAWINGS ARE PREPARED IN ACCORDANCE TO THE CONTRACT DOCUMENTS AND THE SPECIFICATIONS. ALL CLOUDED AREAS SHOWN ARE DUE TO LACK OF INFORMATION PROVIDED BY THE CONTRACT DOCUMENTS OR SPECIFICATIONS. BUT PREPARED WITH ALL THE INFORMATION AVAILABLE TO US. WE MUST HAVE THESE AREAS ANSWERED BY THE GENERAL CONTRACTOR, ARCHITECT & ENGINEER. BEFORE WE CAN START FABRICATING ANY MATERIAL. PLEASE RESPOND WITH THIS INFORMATION BY MARKING UP OUR SHOP DRAWINGS.</small>	
DATE	APP.	SHOP	FIELD	DIST.	COORD.	F.C.		OFFICE
MATERIAL: A36 UNO	HOLE SIZE: 13/16" Ø UNO	BOLT GRADE: A325-N UNO	MINIMUM WELD: 3/16"	ELECTRODE: E-70XX				
 Simsona Corp. 2275 Research Boulevard, Suite 500, Rockville, MD 20850 Office: 301-774-0880 Email: raj@simsona.com								
ARCH.							JOB NAME & LOCATION:	
ENGR.							TONY'S CORNER, LLC.	
CONTR.								
REF:							JOB: 15-103	
DRAWN BY: CB	04/30/2015	CHECKED BY: MSB	04/30/2015				SHEET: ISO-2	
SHEET TITLE: ISO VIEW - 2								
MODIFIED DATE: 04/30/2015 LAST PLOT DATE: 04/30/2015 CAD FILENAME: ISO-2								



ISO VIEW - 3

02/27/2015 FOR FIELD PRINT RECORD							<small>ALL INFORMATION PROVIDED ON THESE DRAWINGS ARE PREPARED IN ACCORDANCE TO THE CONTRACT DOCUMENTS AND THE SPECIFICATIONS. ALL CLOUDED AREAS SHOWN ARE DUE TO LACK OF INFORMATION PROVIDED BY THE CONTRACT DOCUMENTS OR SPECIFICATIONS. BUT PREPARED WITH ALL THE INFORMATION AVAILABLE TO US. WE MUST HAVE THESE AREAS ANSWERED BY THE GENERAL CONTRACTOR, ARCHITECT & ENGINEER, BEFORE WE CAN START FABRICATING ANY MATERIAL. PLEASE RESPOND WITH THIS INFORMATION BY MARKING UP OUR SHOP DRAWINGS.</small>	
DATE	APP.	SHOP	FIELD	DIST.	COORD.	F.C.		OFFICE
MATERIAL:	HOLE SIZE:	BOLT GRADE:		MINIMUM WELD:	ELECTRODE:			
A36 UNO	13/16" Ø UNO	A325-N UNO		3/16"	E-70XX			
Simsona Corp. 2275 Research Boulevard, Suite 500, Rockville, MD 20850 Office: 301-774-0880 Email: raj@simsona.com								
ARCH. ENGR. CONTR.				JOB NAME & LOCATION: Excalibur Professional Building				
DRAWN BY: CB 02/27/2015 CHECKED BY: MSB 02/27/2015				JOB: 15-102 SHEET: ISO-3				
SHEET TITLE: ISO VIEW - 3				MODIFIED DATE: 02/27/2015 LAST PLOT DATE: 02/27/2015 CAD FILENAME: ISO-3				