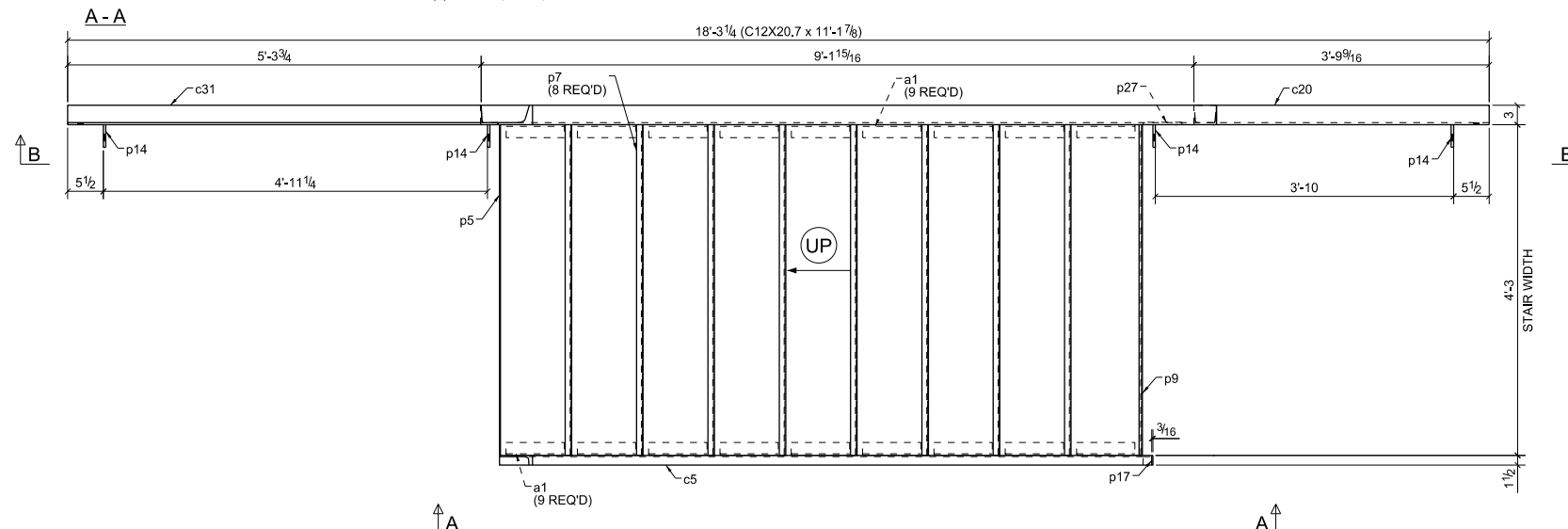
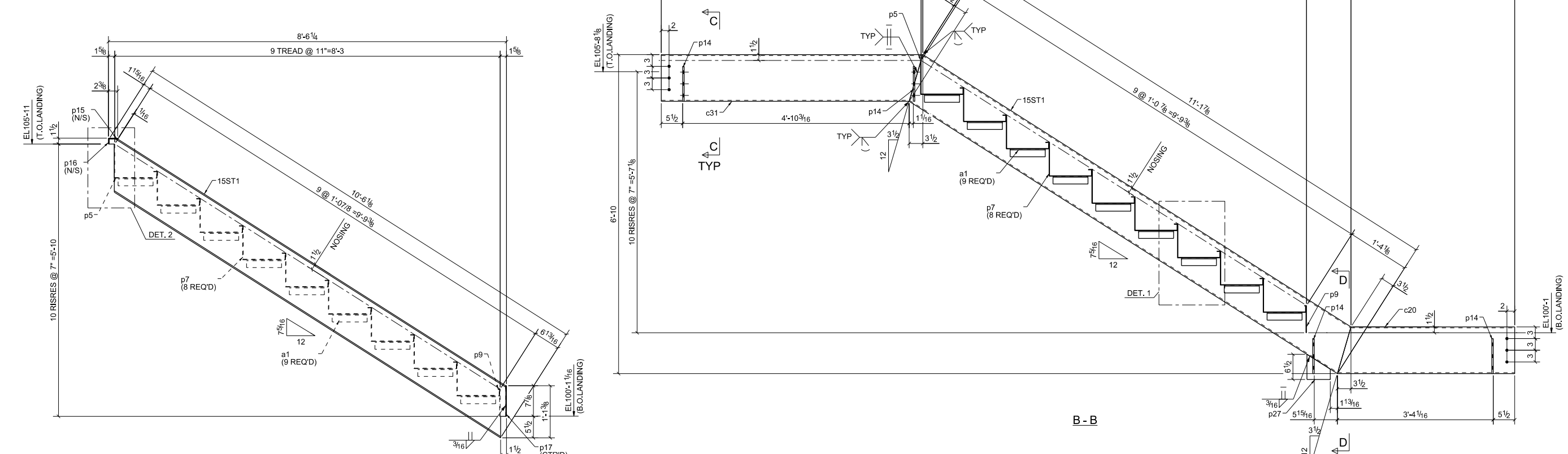
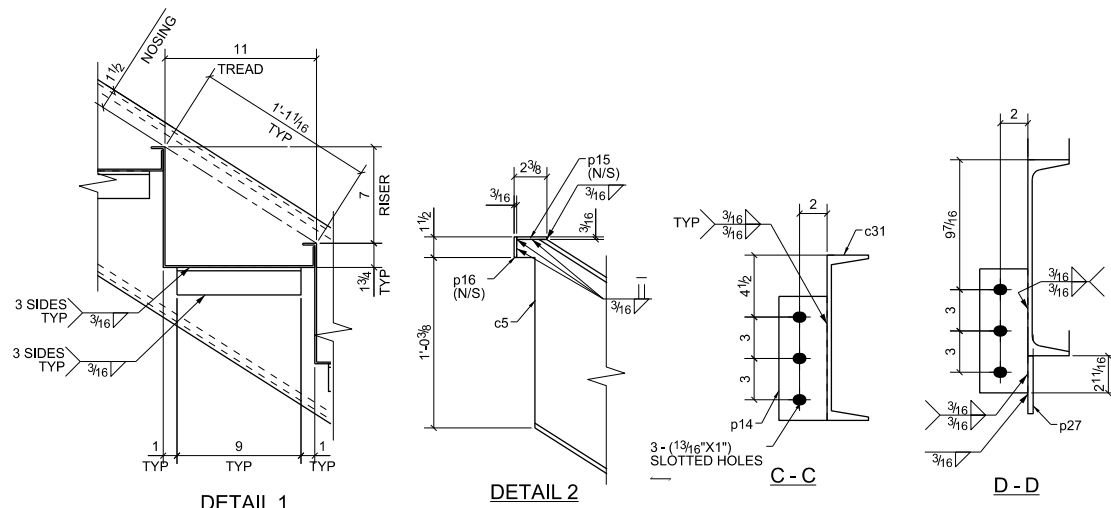


BILL OF MATERIAL

Item	Rev	Ship Mark	Piece Mark	Qty	Type of Mat'l	Size of Material	Grade	Length	Finish	Page/
										1/6
				1	STRINGER	C12X20.7				
				18	ANGLE	L2X2X1/4	A36	11'-1 7/8"		
				1	STRINGER	MC12X10.6	A36	10'-6 1/8"		
				1	STRINGER	C12X20.7	A36	3'-9 9/16"		
				1	STRINGER	C12X20.7	A36	5'-7 3/16"		
				1	PAN	PL1/8"X20 3/4"	A36	4'-3"		
				8	PAN	PL1/8"X21 1/2"	A36	4'-3"		
				1	PAN	PL1/8"X7 1/4"	A36	4'-3"		
				4	PLATE	PL3/8"X3 1/2"	A36	0'-9"		
				1	PLATE	PL3/8"X1 1/2"	A36	0'-2 3/16"		
				1	PLATE	PL3/8"X1 1/2"	A36	0'-1 1/2"		
				1	PLATE	PL3/8"X1 1/2"	A36	0'-7 7/8"		
				1	PLATE	PL3/8"X6"	A36	0'-6 1/2"		



ONE - STRINGER - 15ST1

FOR APPROVAL

DATE	DRAWING RECORD
03/17/2016	Revised As Noted
02/16/2016	3rd Approval
02/12/2016	2nd Approval
11/27/2015	For Approval

NO.	DATE	DESCRIPTION
2	03/01/2016	PER BFA COMMENTS
1	12/29/2015	PER BFA COMMENTS

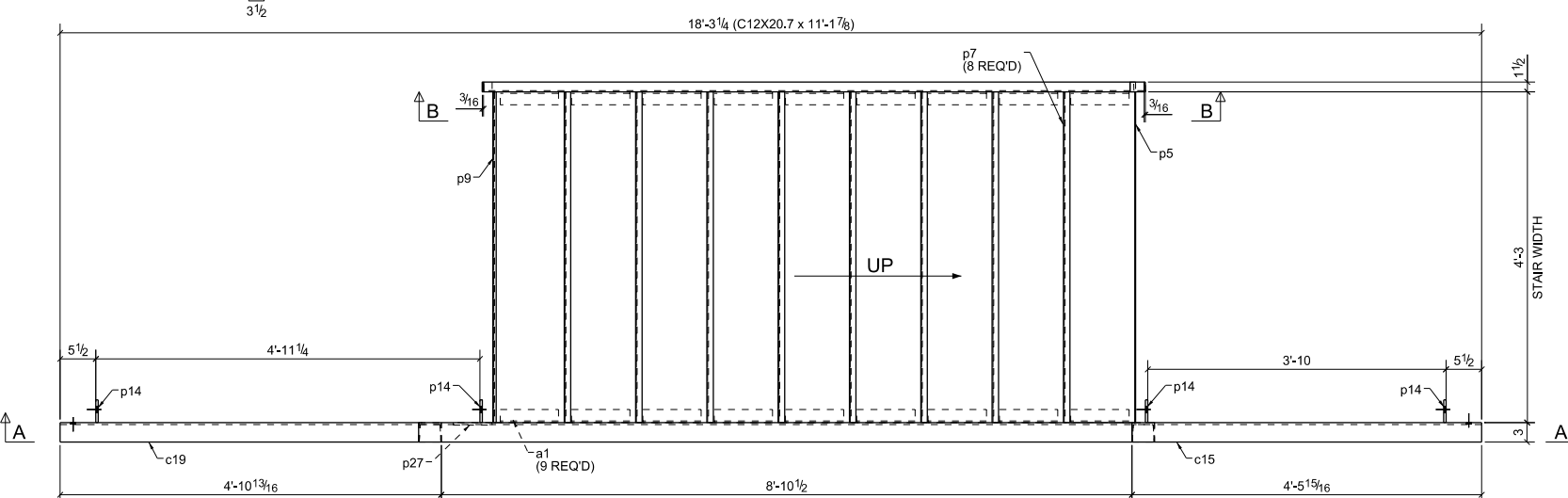
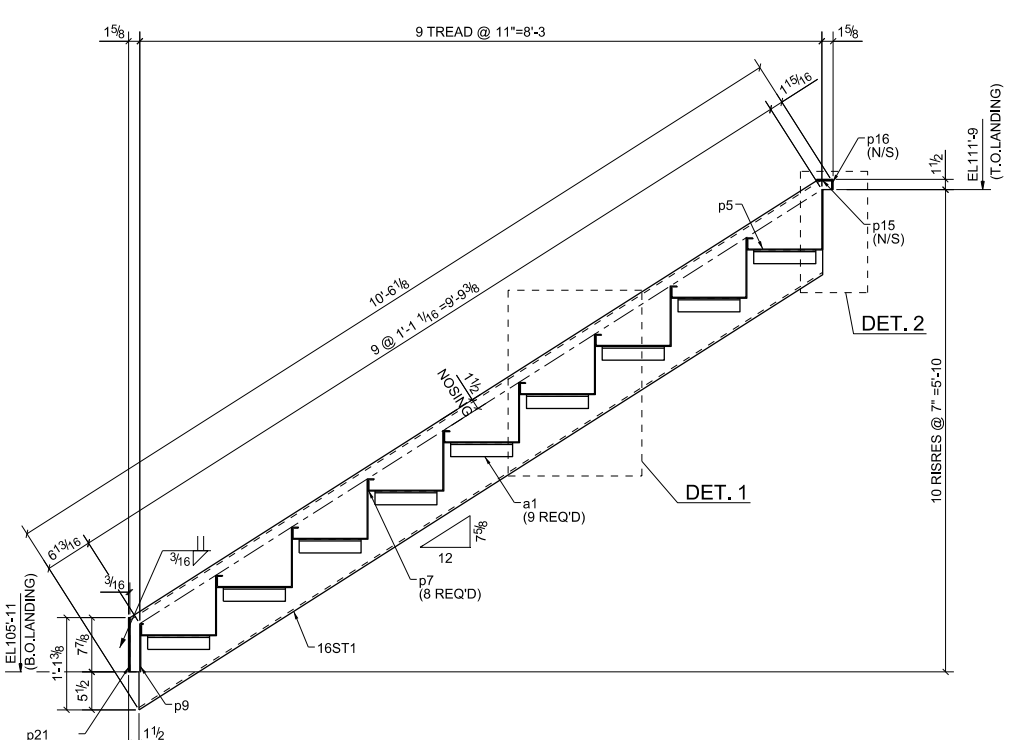
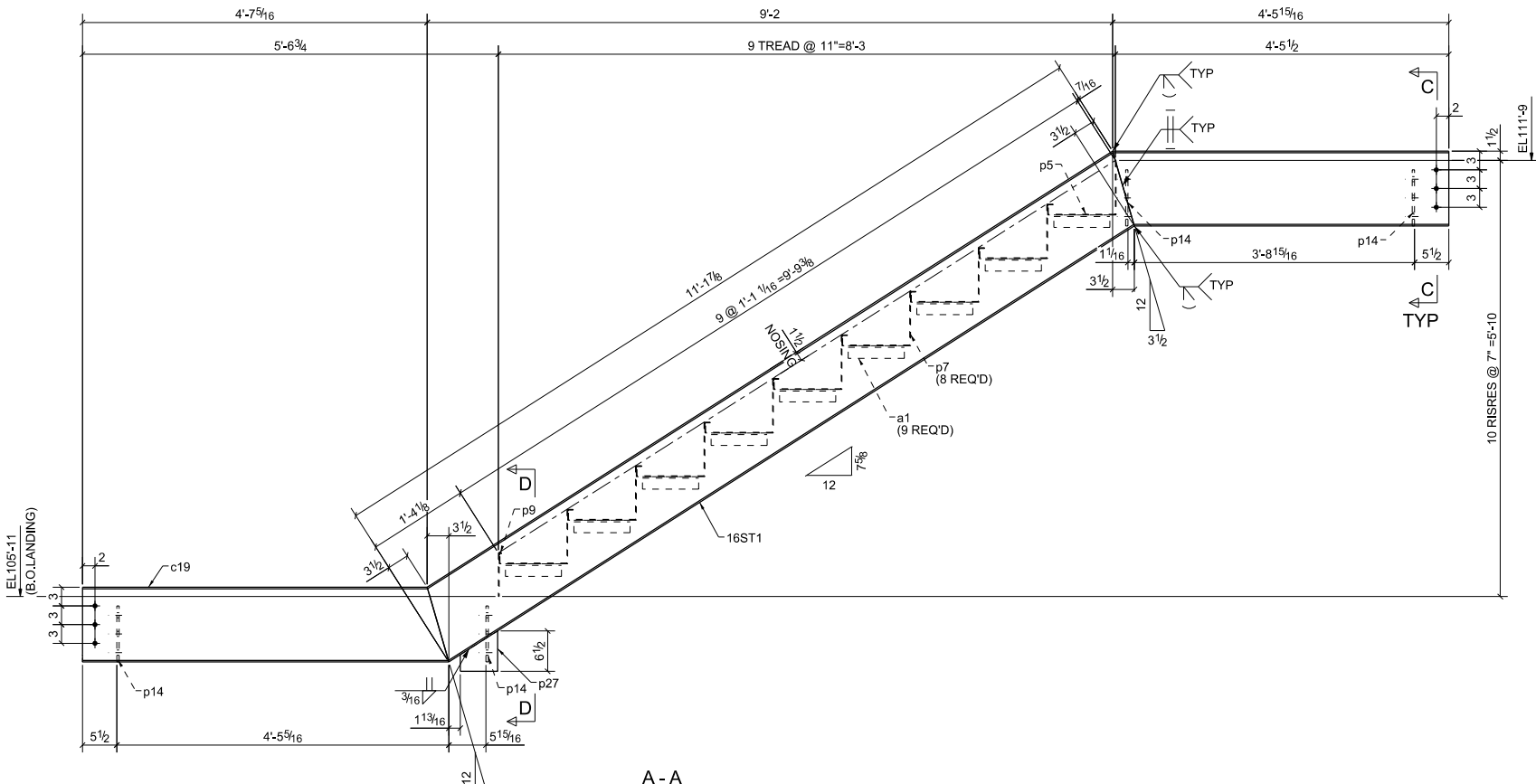
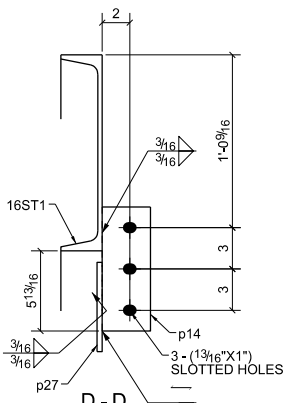
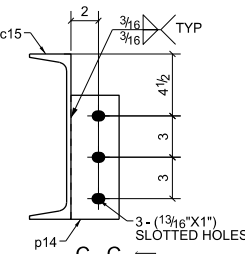
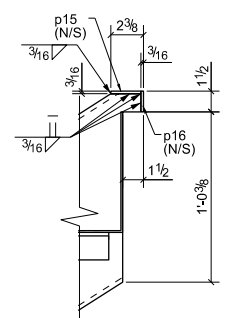
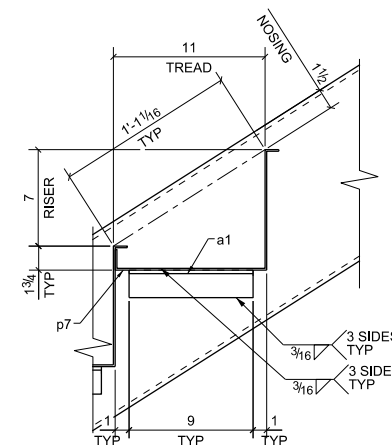
PAINT	PRIME PAINT BLACK (U.N.O.)		
MATERIAL	A36 U.N.		
HOLES	1 3/16" UNO	2	03/01/2016 PER BFA COMMENTS
ELECTRODES	E70XX	1	12/29/2015 PER BFA COMMENTS
REVISIONS			



DWG. BY:	CS	JOB:	DREXEL UNIVERSITY CENTER FOR LIFE
DATE:	11/27/2015	LOC.:	PHILADELPHIA PA, 19104
CHECKED:	ASA	CUST.:	BITTENBENDER CONSTRUCTION
DATE:	11/27/2015	JOB NO.:	15080
		DWG NO.:	15

BILL OF MATERIAL

Item	Rev	Ship Mark	Piece Mark	Qty	Type of Mat'l	Size of Material	Grade	Length	Finish	Page/
					16ST1					
				1	STRINGER	C12X20.7	A36	11'-1 7/8"		
				18	ANGLE	L2X2X1/4	A36	0'-9"		
				1	STRINGER	MC12X10.6	A36	10'-6 1/8"		
				1	STRINGER	C12X20.7	A36	4'-5 15/16"		
				1	STRINGER	C12X20.7	A36	4'-10 13/16"		
				1	PAN	PL1/8"X20 3/4"	A36	4'-3"		
				8	PAN	PL1/8"X21 1/2"	A36	4'-3"		
				1	PAN	PL1/8"X7 1/4"	A36	4'-3"		
				4	PLATE	PL3/8"X3 1/2"	A36	0'-9"		
				1	PLATE	PL3/8"X1 1/2"	A36	0'-2 3/16"		
				1	PLATE	PL3/8"X1 1/2"	A36	0'-1 1/2"		
				1	PLATE	PL3/8"X1 1/2"	A36	0'-7 7/8"		
				1	PLATE	PL3/8"X6"	A36	0'-6 1/2"		



PAINT	PRIME PAINT BLACK (U.N.O.)		
MATERIAL	A36 U.N.		
HOLES	1 3/16\"/>		
ELECTRODES	E70XX		

FOR APPROVAL

DATE	DRAWING RECORD
03/17/2016	Revised As Noted
02/16/2016	3rd Approval
02/12/2016	2nd Approval
11/27/2015	For Approval

SIMSONA ENGINEERING SERVICES

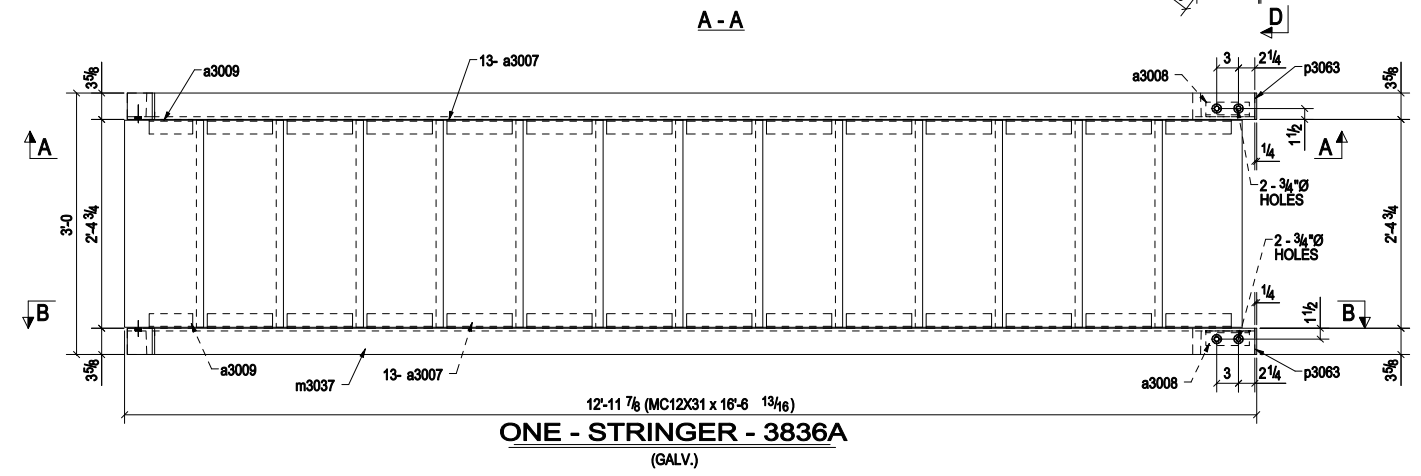
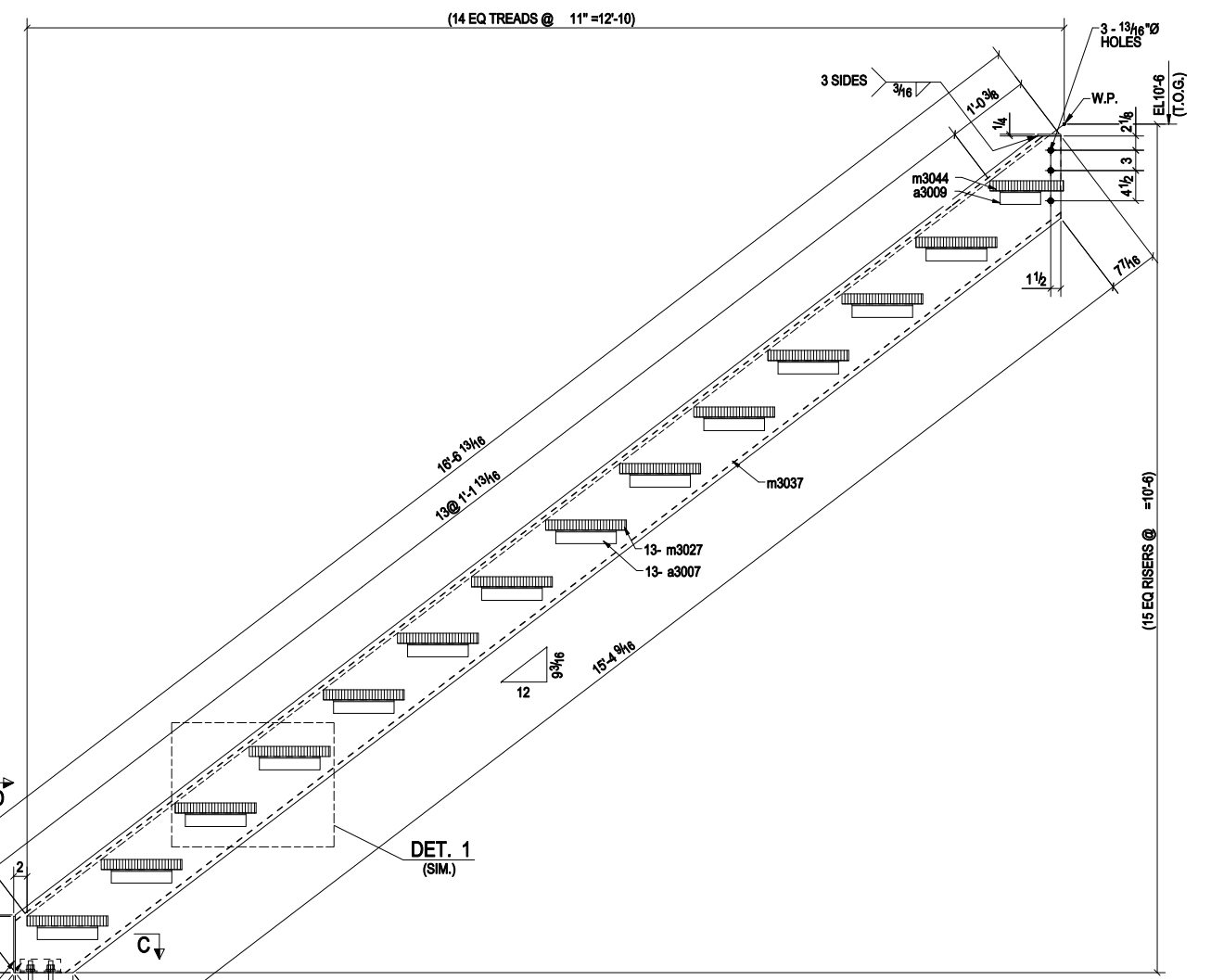
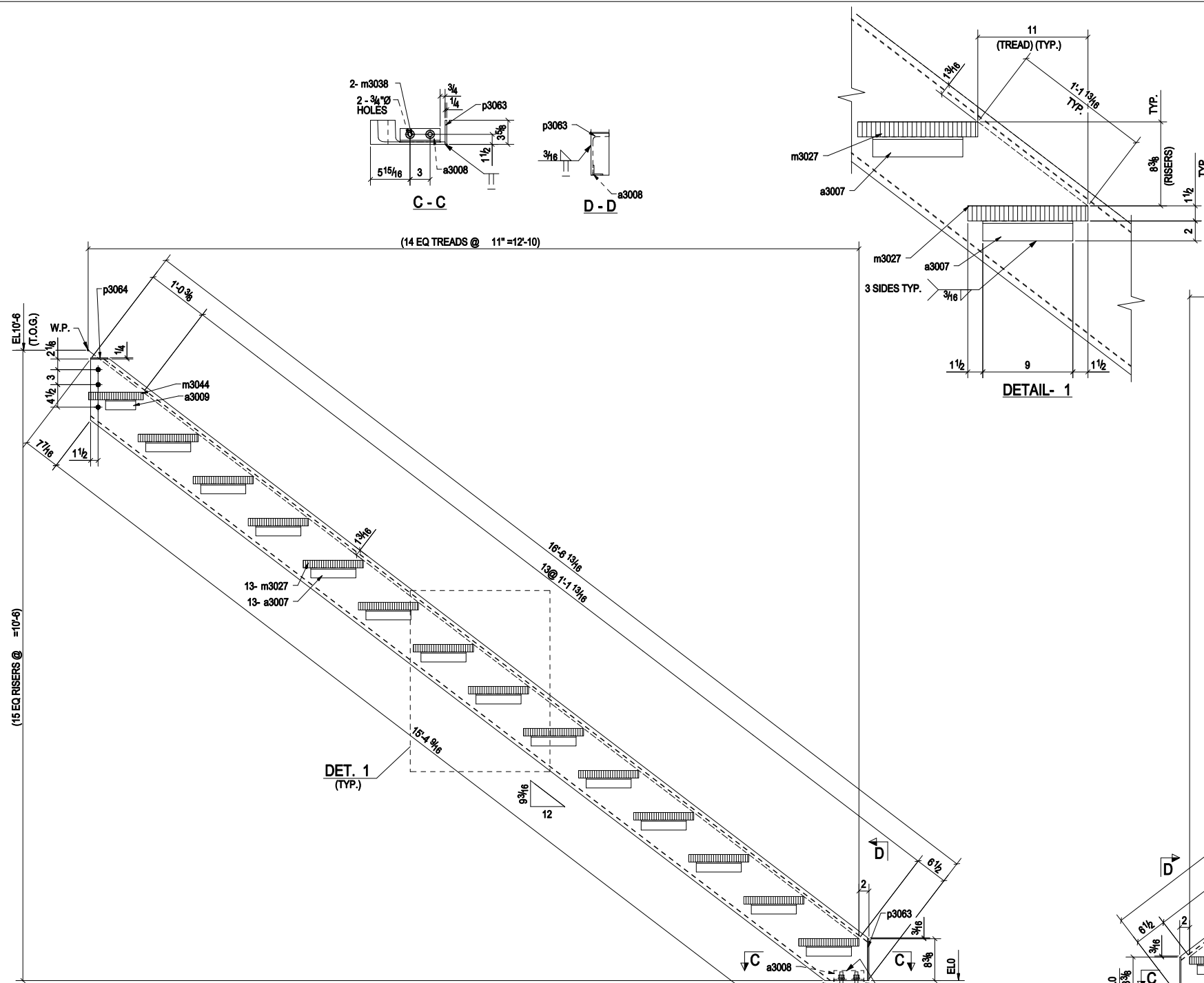
Simsona Corp.
2275 Research Boulevard,
Suite 500, Rockville, MD 20850
Office: 301-774-0880
Email: raj@simsona.com

JOB: DREXEL UNIVERSITY CENTER FOR LIFE
LOC.: PHILADELPHIA PA, 19104
CUST.: BITTENBENDER CONSTRUCTION

JOB NO. 15080
DWG NO 16

BILL OF MATERIAL

QTY	MARK	Priority	DESCRIPTION	LENGTH	MATERIAL	REMARKS
1	3836A		STRINGER			
1	3836A		MC12X31	16'-6 13/16"	A36	GALV.
26	a3007		L2X2X1/4	0'-4"	A36	GALV.
2	a3008		L2X2X1/4	0'-4"	A36	GALV.
2	a3009		L2X2X1/4	0'-4"	A36	GALV.
13	m3027		GRTG1 1/2"X12"	2'-4 1/2"	A1011	GALV.
1	m3037		MC12X31	16'-6 13/16"	A36	GALV.
4	m3038		5/8"ANCHOR	0'-9 3/4"	F1554-GR	GALV.
1	m3044		GRTG1 1/2"X12"	2'-4 1/2"	A1011	GALV.
2	p3063		PL1/4"X3 5/8"	0'-8 3/8"	A36	GALV.
2	p3064		PL1/4"X3 7/16"	0'-3 5/8"	A36	GALV.



Total Qty.	Unit Qty.	Bolt Size & Length
3	3	BOLT 3/4" Ø A325N 0'-1 3/4"
3	3	BOLT 3/4" Ø A325N 0'-2"

APPROVAL / REVIEW AUTHORITY:

APPROVAL BY THE OWNER OF SHOP DRAWINGS PREPARED BY THE FABRICATOR INDICATES THAT THE FABRICATOR HAS CORRECTLY INTERPRETED THE CONTRACT DRAWINGS. APPROVAL DOES NOT RELIEVE THE FABRICATOR OF THE RESPONSIBILITY FOR ACCURACY OF DETAIL DIMENSIONS, NOR THE GENERAL FIT-UP OF PARTS TO BE ASSEMBLED IN THE FIELD. UNLESS SPECIFICALLY STATED TO THE CONTRARY, ANY ADDITIONS, DELETIONS OR CHANGES INDICATED ON THE APPROVAL OF THE SHOP AND ERECTION DRAWINGS ARE AUTHORIZATIONS BY THE OWNER TO RELEASE THE ADDITIONS, DELETIONS OR CHANGES FOR CONSTRUCTION.

Holes	13/16"	UNO							
CLEANING:	SSPC-SP3								
PAINT:	ONE SHOP COAT ALKYD PRIMER								
VERSARE:	10/05/2015								
NO.	10/05/2015	DATE:	FOR FABRICATION	DESCRIPTION:	DATE:	NO.	TYPE	FOR	PRINT RECORD
REVISIONS									

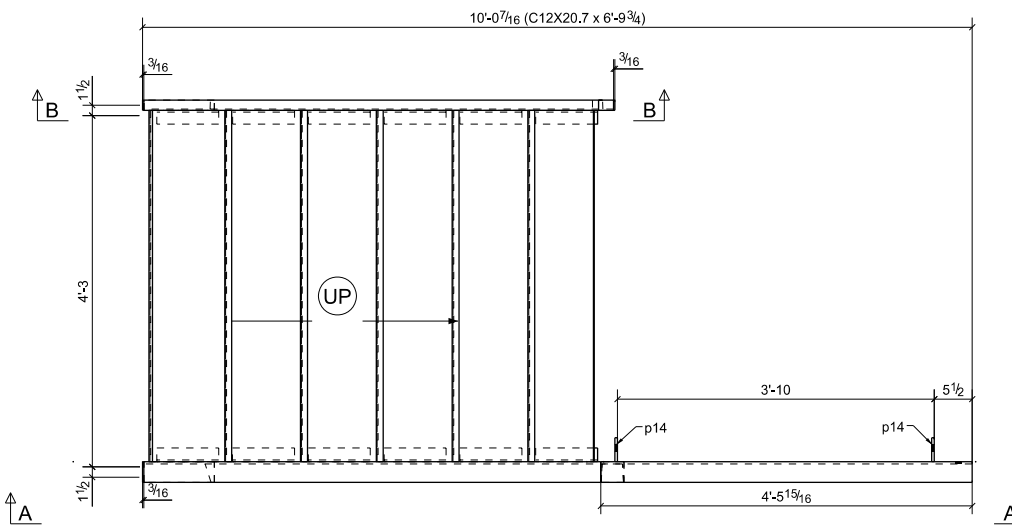
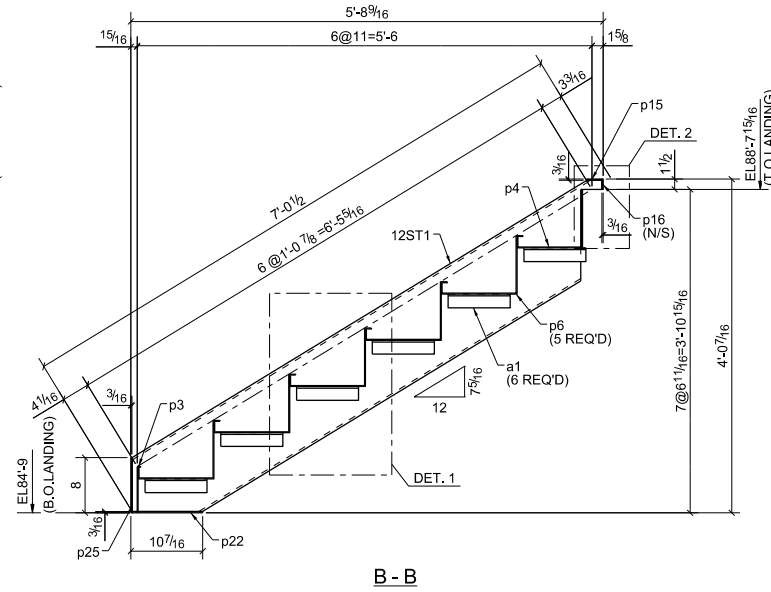
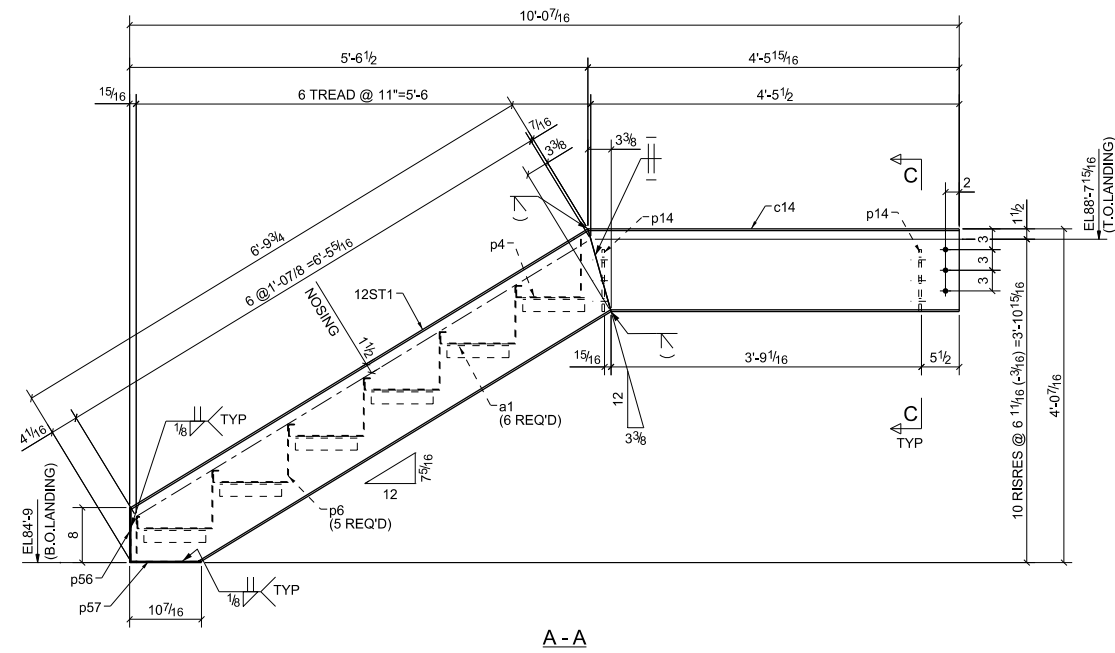
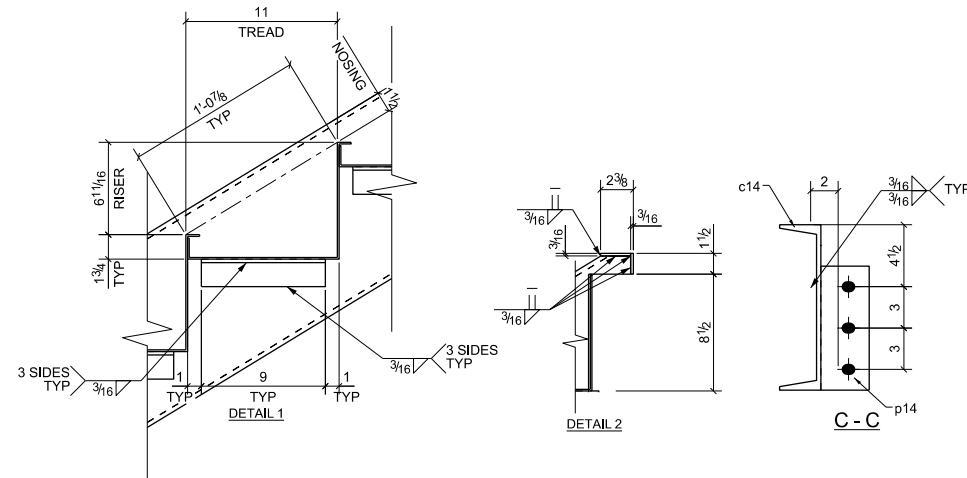
DRG. REF.: 3E3 & 3E4 AON #



CUSTOMER:	RQ.CONSTRUCTION
PROJECT:	P-3191 SOF SUSTAINMENT TRAINING COMPLEX
LOCATION:	MCB CAMP LEJEUNE, JACKSONVILLE, NC
DESCRIPTION:	STRINGER
DRAWN BY: AAK	CHECKED BY: RS
DATE: 10/05/2015	DATE: 10/05/2015
JOB NO. 0407	SHEET NO. 3836

BILL OF MATERIAL

QTY	REV	SHIP	PIECE	TYPE OF MAT'L	SIZE OF MATERIAL	GRADE	LENGTH	FINISH	PAGE
NO.	NO.	MARK	MARK						LIFE
		12ST1		STRINGER					
			1	STRINGER	C12X20.7	A36	6'-9 3/4"		
		a1	12	ANGLE	L2X2X1/4	A36	0'-9"		
		c1	1	STRINGER	MC12X10.6	A36	6'-11 1/4"		
		c14	1	STRINGER	C12X20.7	A36	4'-5 15/16"		
		p3	1	PAN	PL1/8"X6 15/16"	A36	4'-3"		
		p4	1	PAN	PL1/8"X19"	A36	4'-3"		
		p6	5	PAN	PL1/8"X21 1/4"	A36	4'-3"		
		p14	2	PLATE	PL3/8"X3 1/2"	A36	0'-9"		
		p15	1	PLATE	PL3/8"X1 1/2"	A36	0'-2 3/16"		
		p16	1	PLATE	PL3/8"X1 1/2"	A36	0'-11 1/2"		
		p22	1	PLATE	PL3/8"X1 1/2"	A36	0'-10 1/4"		
		p25	1	PLATE	PL3/8"X1 1/2"	A36	0'-8"		
		p56	1	PLATE	PL3/8"X3"	A36	0'-8"		
		p57	1	PLATE	PL3/8"X3"	A36	0'-10 1/4"		



FOR APPROVAL

DATE	DRAWING RECORD
03/17/2016	Revised As Noted
02/12/2016	2nd Approval
11/27/2015	For Approval

PAINT	PRIME PAINT BLACK (U.N.O.)		
MATERIAL	A36 U.N.		
HOLES	1 3/16" UNO		
ELECTRODES	E70XX	03/01/2016	PER BFA COMMENTS
		NO	DATE
			DESCRIPTION
			REVISIONS

SIMSONA
ENGINEERING SERVICES

Simsona Corp.
2275 Research Boulevard,
Suite 500, Rockville, MD 20850
Office: 301-774-9880
Email: raj@simsona.com

DWG. BY:	CS	JOB:	DREXEL UNIVERSITY CENTER FOR LIFE	JOB NO.	15080
DATE:	11/27/2015	LOC.:	PHILADELPHIA PA, 19104	DWG. NO.	12
CHECKED:	ASA	CUST.:	BITTENBENDER CONSTRUCTION		
DATE:	11/27/2015				