

NO. DATE REVISION

KEY PLAN

Perkins Eastman

110 FIFTH AVENUE
NEW YORK, NY 10003
T: 212.512.2000
F: 212.512.2001

401 SUMNER STREET
STAMFORD, CT 06901
T: 203.351.1600
F: 203.251.7424

Owner:
TOWN OF FAIRFIELD
725 OLD POST ROAD
FAIRFIELD, CT 06424

Construction Manager:
GILBANE BUILDING COMPANY
255A NEW LONDON TURNPIKE
GLASTONBURY, CT 06033
860.368.5105

Architect:
ARIS LAND STUDIO
1450 Barnum Avenue, Suite 201
BRIDGEPORT, CT 06610
203.606.3130

Structural:
DTC
2321 WHITNEY AVENUE, SUITE 301
HAMDEN, CT 06518
203.239.4200

Mechanical:
DTC
2321 WHITNEY AVENUE, SUITE 301
HAMDEN, CT 06518
203.239.4200

Environmental:
AMC ENVIRONMENTAL LLC
P.O. BOX 423
STRAITFORD, CT 06615
203.378.5020

WOODWARD & CURRAN
12501 HIGHLAND AVENUE
CHESHIRE, CT 06410
203.271.0279

PROJECT TITLE:
FAIRFIELD LUDLOWE HS WINDOW REPLACEMENT

785 UNQUOWA ROAD
FAIRFIELD, CONNECTICUT
OSF #: 051-0127 EA/EC/RR PHASE 3 OF 3

PROJECT No: 56110.00

DRAWING TITLE:
EXTERIOR ELEVATIONS

SCALE: AS NOTED

A-02-1

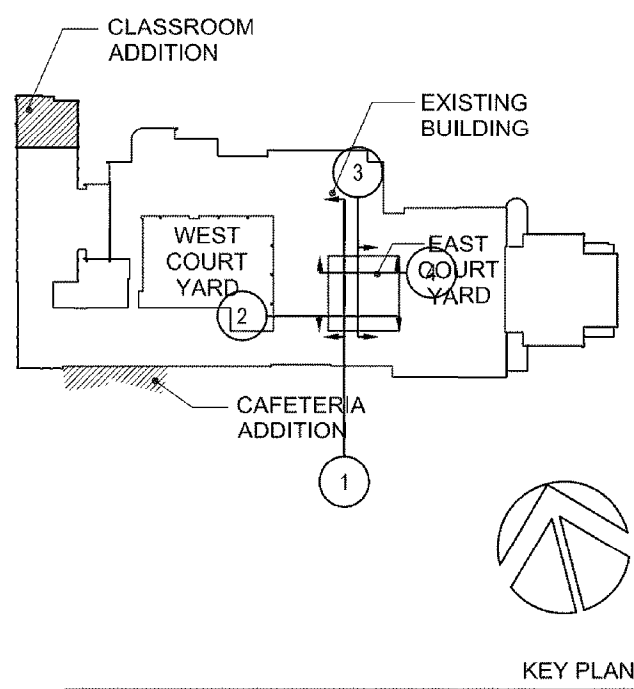
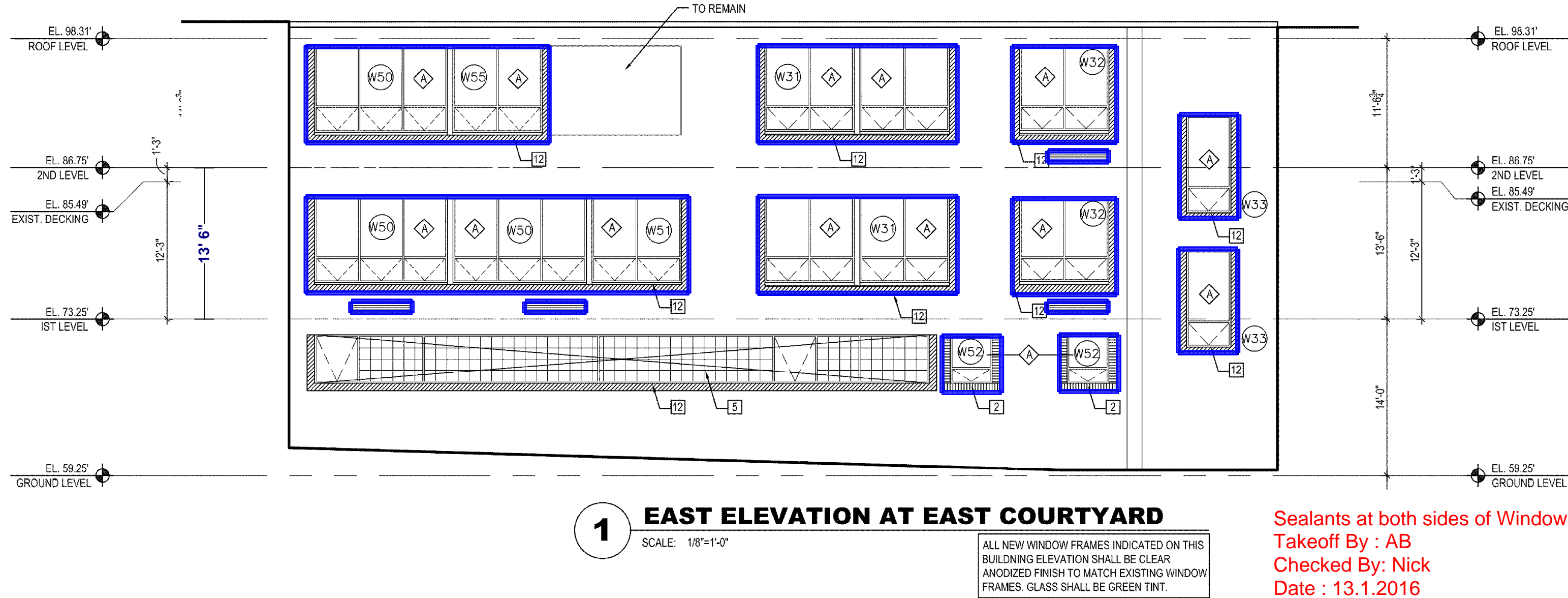
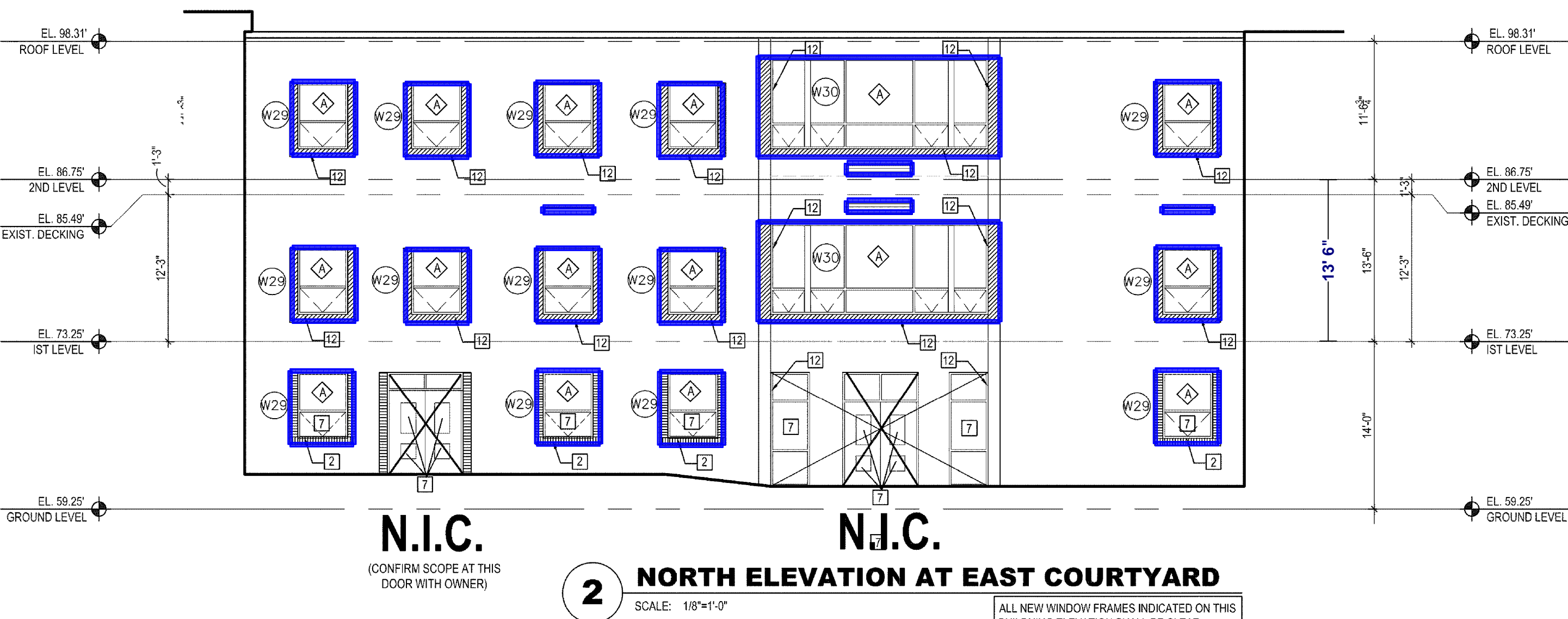
10.14.2014 - REVISED NOV 13, 2015

Sealants at both sides of Windows.
Takeoff By: AB
Checked By: Nick
Date: 13.1.2016

Sealants at both sides of Windows.
Takeoff By : AB
Checked By: Nick



- 8 EAST CAFETERIA ELEVATION**
SCALE: 1/8"=1'-0"



Perkins Eastman

115 FIFTH AVENUE	422 SUMMER STREET
NEW YORK, NY 10033	STAMFORD, CT 06001
T. 212.353.7200	T. 203.251.7400
F. 212.353.7200	F. 203.251.7474

Owner;
TOWN OF FAIRFIELD
725 OLD POST ROAD
FAIRFIELD, CT 06824

Construction Manager:
GILBANE BUILDING COMPANY
208A NEW LONDON TURNPIKE
GLASTONBURY, CT 06033

860.368-5105
Civil / Site:
DTC
2321 WHITNEY AVENUE, SUITE 301

HAMDEN, CT 06518
203.239.4200
Landscape Architect:
ARIS LAND STUDIO
4450 Dennum Avenue, Suite 204

1450 Barnham Avenue, Suite 201
BRIDGEPORT, CT 06610
203.606.3130
Structural:
DTC

2321 WHITNEY AVENUE, SUITE 301
HAMDEN, CT 06518
203.239.4200

MEP:
DTC

2321 WHITNEY AVENUE, SUITE 301
HAMDEN, CT 06518
203.239.4200
Environmental

AMC ENVIRONMENTAL LLC
P.O. BOX 423
STRATFORD, CT 06615
203.378.5020

WOODARD & CURRAN
1520 HIGHLAND AVENUE
CHESHIRE, CT 06410
203.271.0379

PROJECT TITLE:

**FAIRFIELD
LUDLOWE HS
WINDOW
REPLACEMENT**

785 UNQUOWA ROAD
FAIRFIELD, CONNECTICUT
OSF #: 051-0127 EAVEC/RR PHASE 3 OF 3

PROJECT No: 56110.00

DRAWING TITLE:

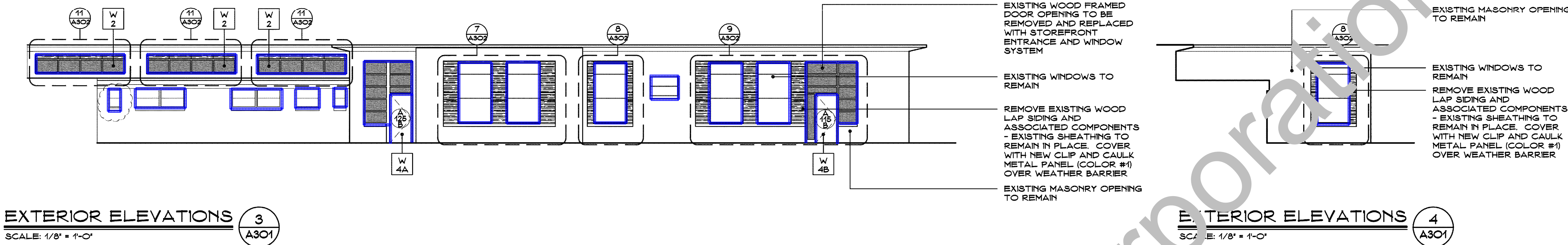
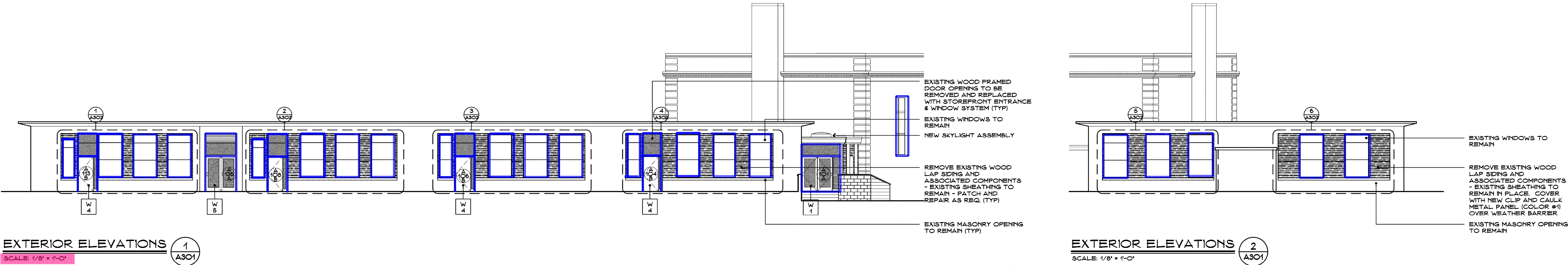
**EXTERIOR
ELEVATIONS**

SCALE: AS NOTED

A-02-4

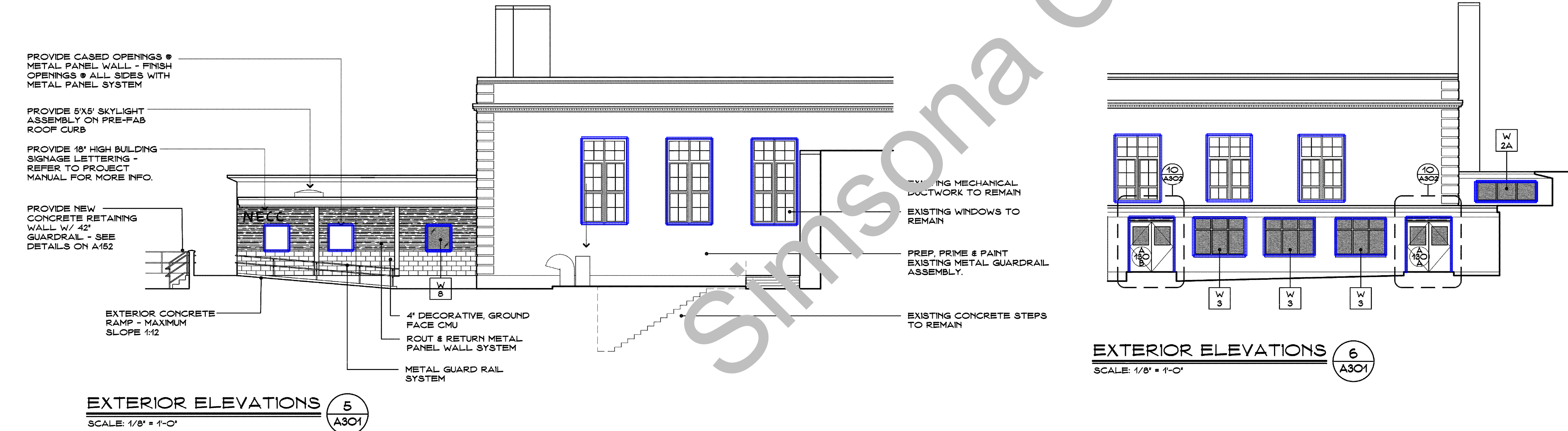
10.14.2014 - REVISED NOV 13, 2015

2 layers of Sealant on W2A & W8.
2 layers of Acoustical Sealant for W7.
Sealants also taken off for Windows not mentioned in Schedule.

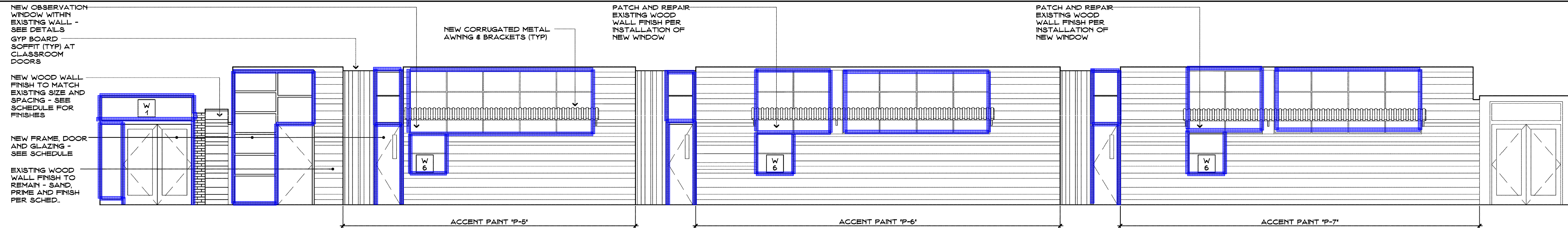


Caulking Sealant is As per A302

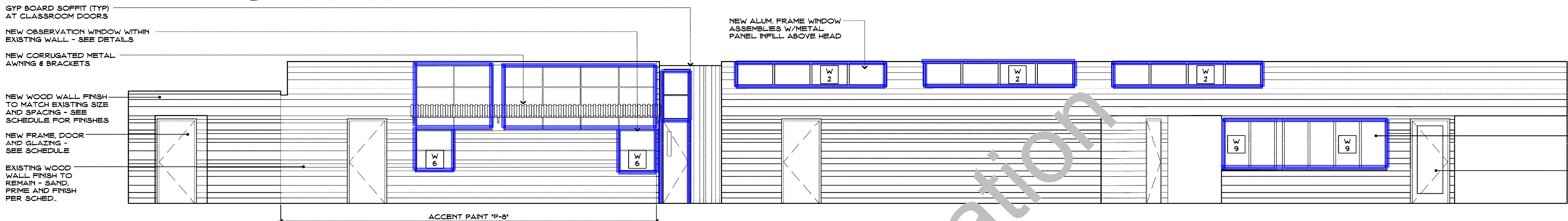
Caulking Sealant 1,935 LF



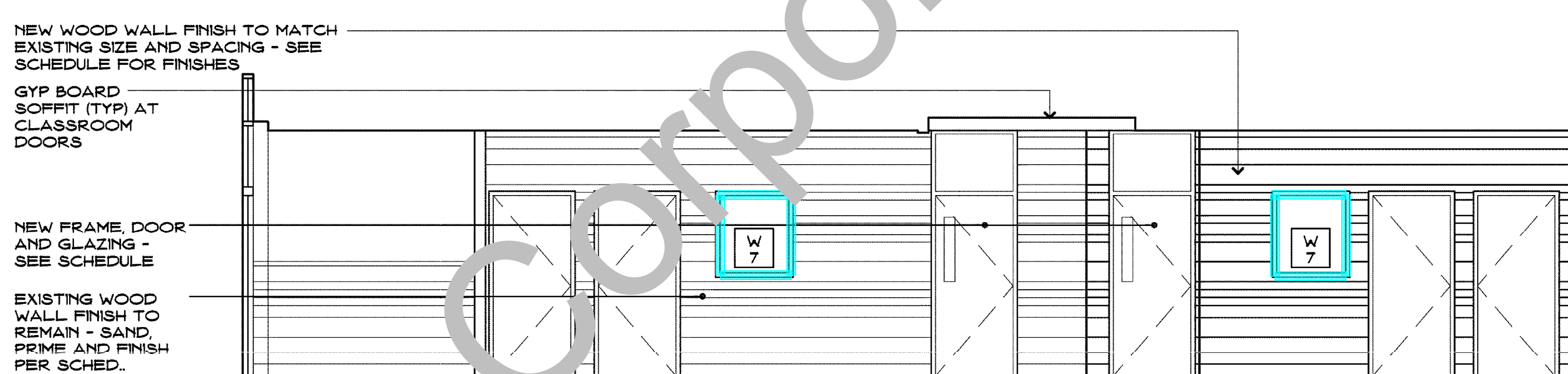
Takeoff by : Nick
Checked by : AB



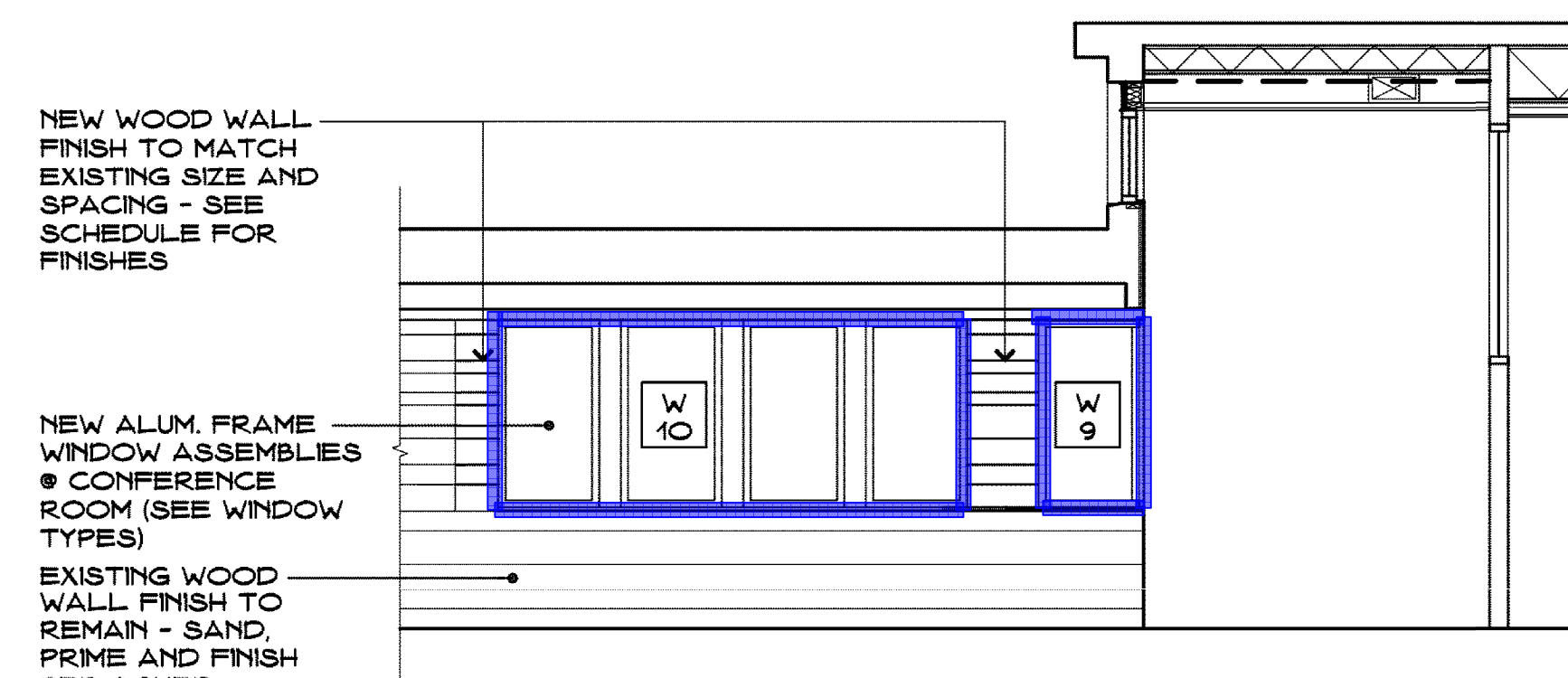
CORRIDOR ELEVATION
SCALE: 1/4" = 1'-0"
1
A704



CORRIDOR ELEVATION
SCALE: 1/4" = 1'-0"
2
A704



CORRIDOR ELEVATION
SCALE: 1/4" = 1'-0"
3
A704



CORRIDOR ELEVATION
SCALE: 1/4" = 1'-0"
4
A704

Takeoff by : Nick
Checked by : AB

Project Title:
Norwalk Early Childhood Center
11 Allen Road
Norwalk, Connecticut 06581



SILVER / PETRUCELLI + ASSOCIATES
Architects / Engineers / Interior Designers
3190 Whitney Avenue, Hamden, CT 06518-2340
Tel. 203 230 9007 Fax. 203 230 8247
silverpetrucelli.com

Revision:	Description:	Date:	Revised By:
-	ISSUED FOR BID	12-18-2015	

Drawing Title:
Interior Elevations
State Project Number: 103-0243 A / CV

Date:
NOVEMBER 10, 2015
Scale:
AS NOTED
Drawn By:
JRJ
Project Number:
14.167
Drawing Number:
A704

